

# **YALLOURN YEAR BY YEAR 1925**



The first sod in the Victorian Government's ambitious scheme, to generate electricity at Yallourn, was turned almost a century ago (1921); and for the next six decades, the township of Yallourn 'took root, bloomed, withered and died'....

*"Yallourn was swallowed by the coal mine it was built to serve"...*  
*'The Herald Sun' May 2016.*

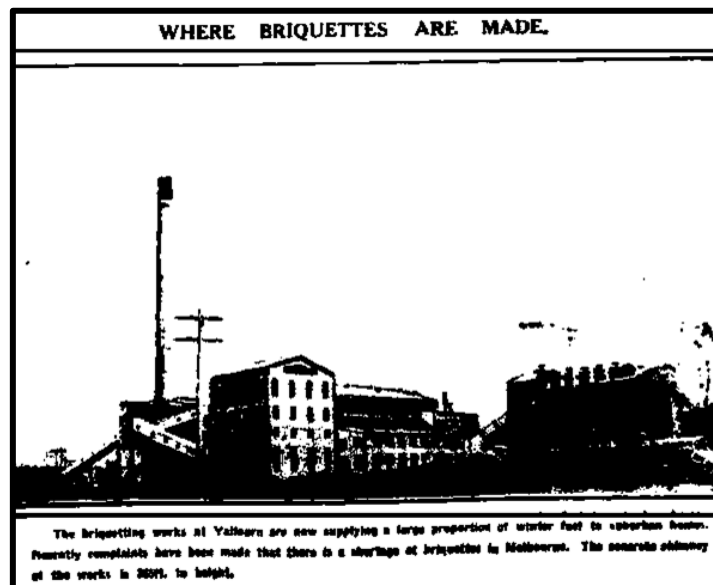
In this history series for the Virtual Yallourn website, the monthly activities, shown in each year, are not necessarily momentous occasions in the town's history but simply attempt to further highlight the personalities of the town and the myriad of events that made the local (and often national) news.

The walk down 'Memory Lane' (not to be confused with Meadow Lane which ran off Latrobe Avenue) begins in the year of 1925 when the plans of the SEC were well underway; and the unique 'garden town' of Yallourn was taking shape and creating interest far and wide.



# 1925

**JANUARY:** Briquettes, produced from the brown coal at the Yallourn factory, were being transported, by train, and sold in huge quantities in the metropolitan suburbs. One of the main topics of interest, in relation to the 'recently established' briquette factory at Yallourn, was the height of the factory's main chimney. It was 330 feet (100 metres) high and was said to be the tallest structure in Australia (at that time). Numerous articles and photos, regarding the Yallourn briquette factory, can be found on this website.

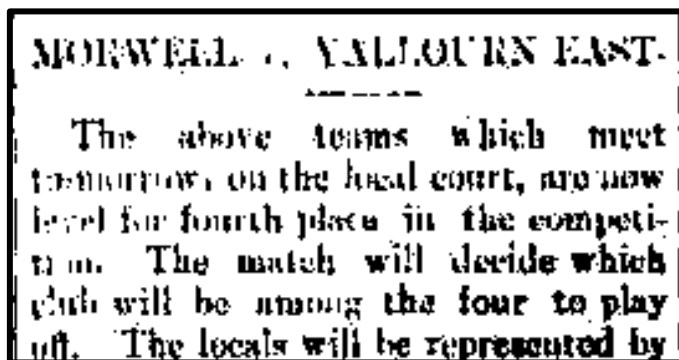


Source: 'The Argus' June 19th 1925. Page: 9



The 'world famous' chimney at Yallourn Briquette Factory.

**FEBRUARY:** Yallourn East played Morwell in a tennis match; and it was a keenly contested affair with Yallourn East narrowly winning.



Two teams represented Yallourn that year: (i) Yallourn and (ii) Yallourn East. Players mentioned in the match results of those formative years of the club included: Mr. C. Kernot, Mr. H. McLean, Miss Wyatt, Mrs C.M Smith, Mr. W. Morrison, Mr. L. Shaw, Mr. L.N. Jamieson, Mr H.M. Ashley, Mr H.F. Godden, Mrs E. Dunn and Mrs W.B. Nelson.

The teams affiliated in the Central Gippsland Tennis Association in 1925 were: Trafalgar, Morwell, Moe (two teams), St Mary's and the two teams from Yallourn. Judging from its position on the CGTA Ladder in 1925, Yallourn was a particularly strong combination.

The Yallourn Tennis Club was formed in 1921 and, initially, facilities were far from ideal at the Eastern Camp; however, in time, Yallourn became one of the strongest tennis clubs in country Victoria.

Note: This website carries a series of articles and photographs related to the history of tennis at Yallourn.



The Yallourn tennis courts in later years. Source: 'Virtual Yallourn.'

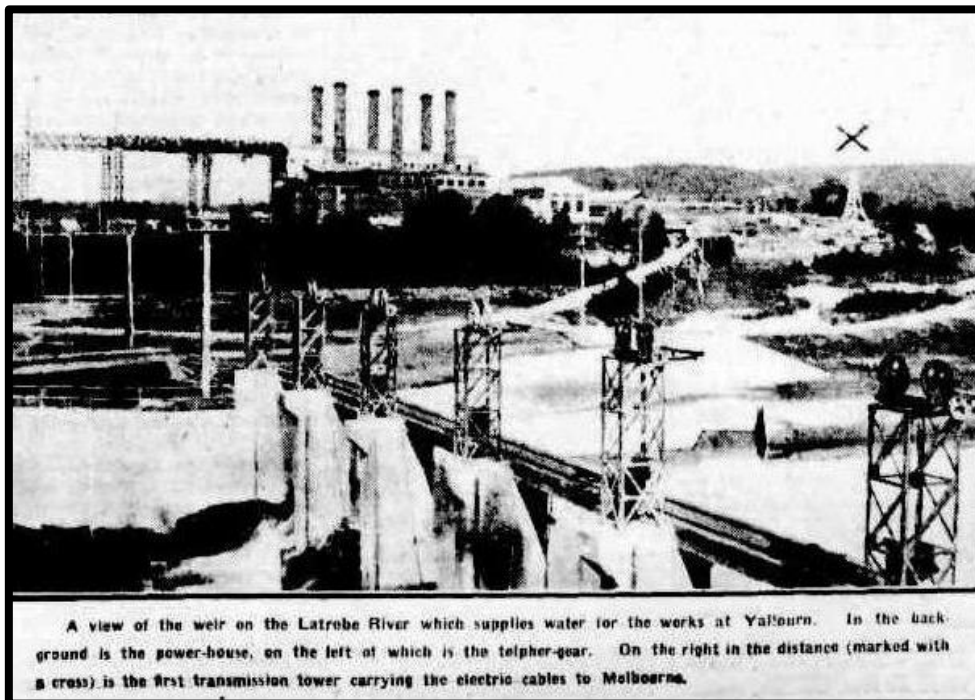
**MARCH:** A film entitled 'Yallourn', which was produced by the Electricity Commission, was screened in various Victorian venues at Korumburra, Murrabit, Brunswick and the Exhibition Building in the city.

### YALLOURN FILMS.

The Yallourn film, prepared by the Electricity Commission, descriptive of its various schemes, continues to be in demand among public bodies in various parts of the State. Following screenings throughout the Western district, and in the North-east, the film has recently been exhibited at Korumburra, Murrabit, Brunswick and at the Exhibition buildings, Melbourne. Secretaries of progress and other associations, municipal authorities, and others desiring to arrange for screenings should communicate with the Electricity Commission.

Source: 'Werribee Shire Banner' 19<sup>th</sup> March 1925. Page: 6

**APRIL:** Attempts to form a Yallourn and District Soccer League were underway; and Mr. Jas. Anderson was listed as the Honorary Secretary. An organized and structured soccer league took some time to 'get off the ground' in Gippsland; and the determined efforts of Mr. W. Langford and Mr. D. Milner to promote soccer in Yallourn deserve recognition. It is recorded that Yallourn travelled to Sale in 1925 and scored a 4-1 victory over Sale United. Little is known about the competition but it is recorded that Glenmaggie Weir fielded a soccer team that season. A series of photographs and articles about soccer in Yallourn can be found on this website.



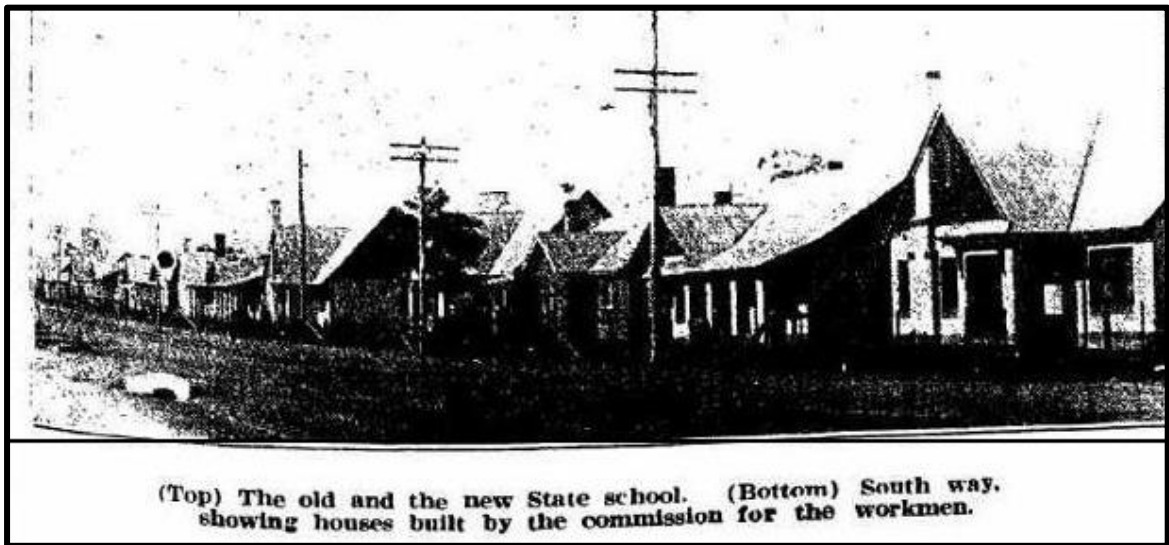
A view of the weir on the Latrobe River which supplies water for the works at Yallourn. In the background is the power-house, on the left of which is the telpher-gear. On the right in the distance (marked with a cross) is the first transmission tower carrying the electric cables to Melbourne.

### 1925 - UNDER WAY AT YALLOURN

The power house, weir and transmission tower (marked with an X).

Source: 'The Argus' Friday 19 June 1925. Page: 9.

**MAY:** Shire Councillors from Frankston and Hastings toured Yallourn. The journey, from the Mornington Peninsula, was made by car; and, according to the available reports, the visitors were 'much impressed' with the massive project unfolding at Yallourn.



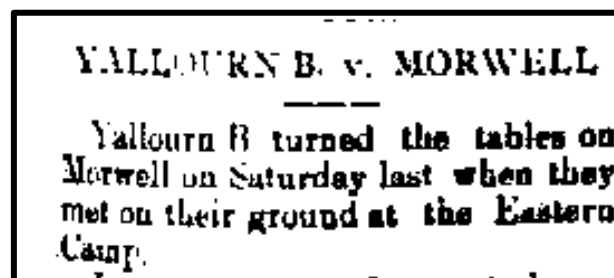
(Top) The old and the new State school. (Bottom) South way, showing houses built by the commission for the workmen.

**JUNE:** A football match between Yallourn and Morwell took place in June. This local team was called 'Yallourn B' and played against Boolarra, North Mirboo, Morwell, Yinnar and the Brown Coal Mine.

The game against Morwell was played at the Eastern Camp Oval; and the Yallourn B team claimed victory. The final score that day was:

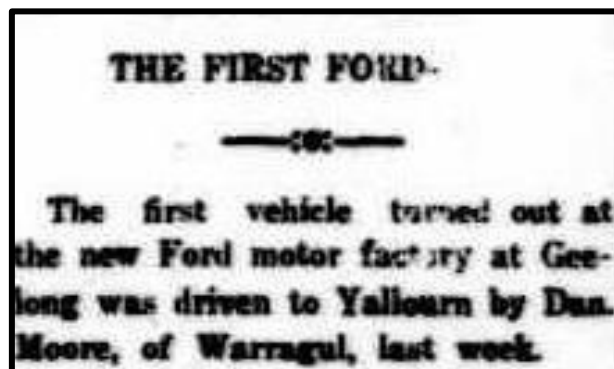
Yallourn B : 7.9. (51) defeated Morwell 4.6. (30).

Conditions were wet and heavy and it must have been a rugged affair as three Yallourn players were reported by the umpire.

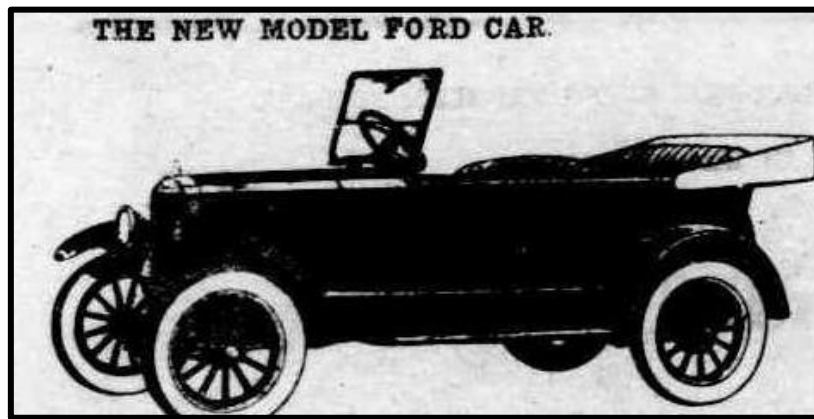


Source: 'Morwell Advertiser' 12<sup>th</sup> June 1925. Page: 4

**JULY:** The first-ever Ford vehicle, manufactured at the company's Geelong factory, was driven to Yallourn by Mr Dan Moore. The event received virtually no publicity but it was known that Mr Moore lived in Warragul.



Source: 'Gippsland Times' 27th July 1925. Page: 3



Source: 'Manilla Express' 11<sup>th</sup> May 1926. Page: 4

**AUGUST:** The brown coal fields at Yallourn were described by the Chief Commissioner of the Victorian Railways, Mr Clapp as...

*'...one of the greatest gifts of God to mankind...It is going to be a wonderful asset to Victoria.' Mr Clapp went further in stating that the deposits of brown coal at Yallourn would make Victoria the 'California of Australia.'*



**Sir Harold Winthrop Clapp**

Sir Harold Winthrop Clapp (KBE) (pictured above), who was once described as a 'genius for his administration', died in 1952. For some unknown reason, Sir Harold is rarely mentioned in the historical archives of Yallourn. Following his death, the Prime Minister of Australia at that time, Sir Robert Menzies, paid homage to Sir Harold's dedicated public service and his lasting legacy in matters related to national transport.

**SEPTEMBER:** During a police raid on a 'sly grog shop' (as they were then called) in Yallourn, an attempt was made by the occupants to blow up the premises (probably in an attempt to destroy any evidence of illegal trading). Fortunately, no one was injured in the incident.

In earlier times, police raids on 'sly grog shops' were common; and the illegal trading of alcohol, in and around the camps, was a contributing factor in the decision to establish a hotel at Yallourn in 1928.



Source: 'Weekly Times' 12<sup>th</sup> September 1925. Page: 8

**OCTOBER:** Yallourn defeated Warragul in the football final played at Yarragon. Yallourn won the match by six points; and the best players for Yallourn were: Page, the Greenwood brothers, Burke, Rusden, \*\*Kennelly (see below) Allen, Boyle, Daniels and Thomson.



Pat Kennelly - A successful coach at Yallourn Football Club in 1925

\*\*Pat Kennelly was later elected to the Victorian Legislative Council and from 1953 until 1970 was as a Senator in the Federal Parliament.



Waiting for the mail at Yallourn in 1925.

Source: 'Weekly Times' 8<sup>th</sup> August 1926 Page: 46

**NOVEMBER:** As shown in the photograph below, members of the English Speaking Union travelled from Flinders Street, by train, to visit Yallourn as guests of Sir John Monash.



Source: 'The Argus' Friday 13 November 1925. Page: 17

**DECEMBER:** Mr. H. W. Alexander, the Postmaster at Yallourn was appointed to a new position at the Moorabbin P.O. On his departure from Yallourn, Mr Alexander was presented with silver tea set. Numerous photos of the Yallourn Post Office can be found on this website.

### **CAN YOU ADD TO THE HISTORY OF YALLOURN?**

The above article was prepared for the Virtual Yallourn website by Roger Spaul and Julie George with the aim of fostering further interest in the history of Yallourn. It is hoped that readers may be able to add additional information regarding an event or a person mentioned in the articles. Please contact Julie if you have memorabilia or photographs related to the Virtual Yallourn website.