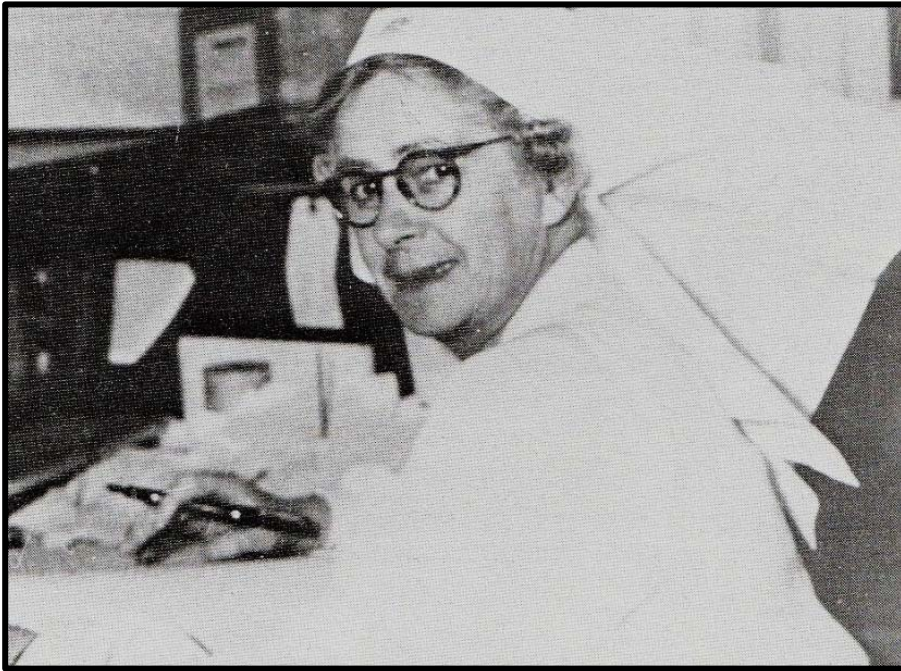


IMAGES OF YALLOURN

THE RETIREMENT OF MATRON ALLAN

1950.



A most respected local identity, in the health and welfare of Yallourn residents, Matron Madge Allan, retired in 1950.

Sister Allan arrived in Yallourn (following her appointment by the Yallourn Medical Fund Committee) in 1927; and later became the first Matron of the Yallourn Hospital (when it opened in January 1929).

EARLIER PHOTOGRAPHS OF MATRON ALLAN & STAFF AT THE YALLOURN HOSPITAL



Caption: "Matron M. Allan and some of the nurses."

Source: 'Weekly Times 'September 11th 1937 Page: 39.



Caption: "Matron Allan and Sister Canny in the No. 1 Operating Theatre at the Hospital."

Source: 'Weekly Times 'September 11th 1937 Page: 39.

THE YALLOURN HOSPITAL NEARING COMPLETION IN 1928



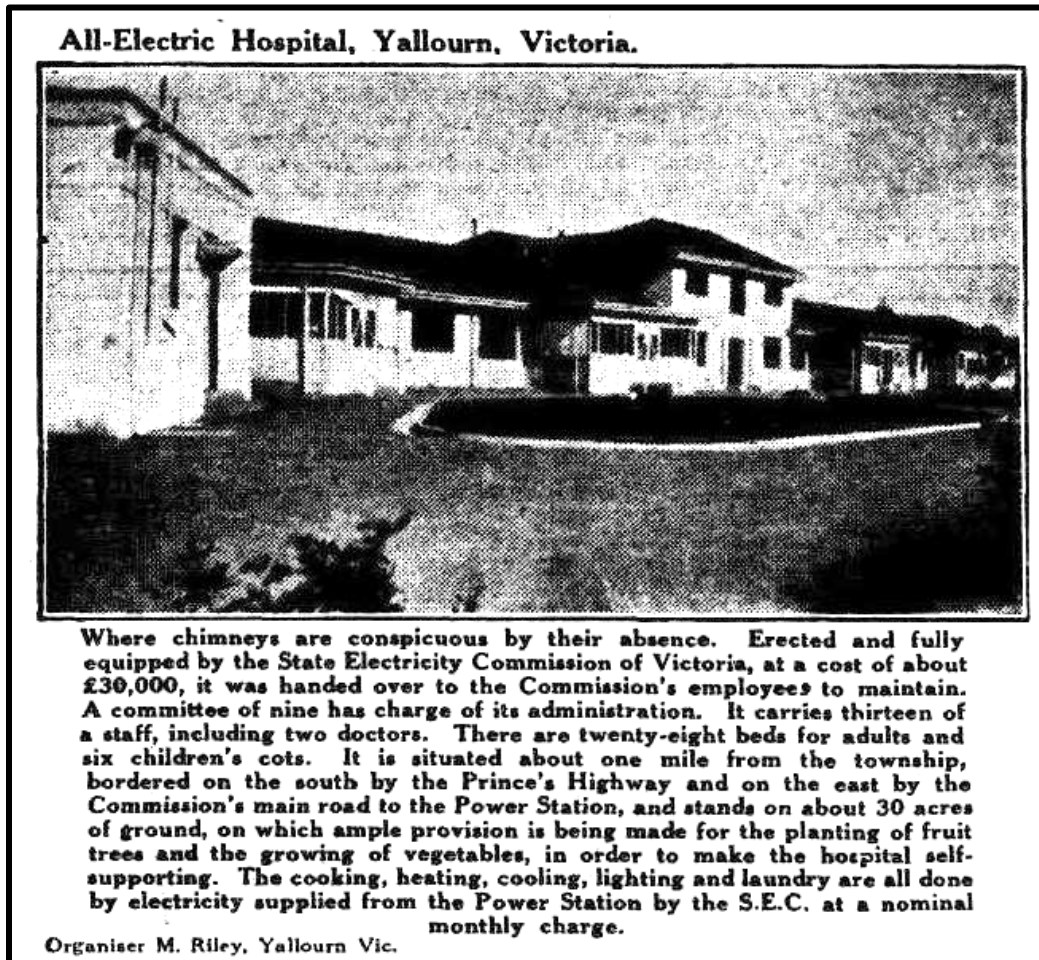
Source: State Library of Victoria Ref: H2009 18/246

THE OPENING OF THE YALLOURN HOSPITAL -1929



These photographs were taken at the official opening of the Yallourn Hospital on the 13th January 1929. Sir John Monash can be seen addressing the massive crowd that attended. There is a strong possibility that the person wearing the white head piece/nursing veil is Matron Allan.

THE MODERN AND ALL-ELECTRIC YALLOURN HOSPITAL -1930

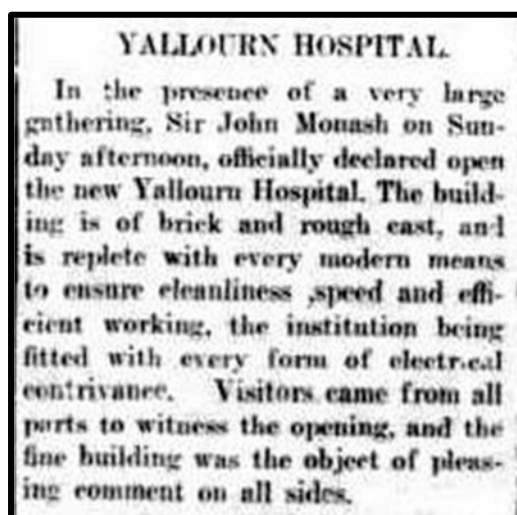


Source: 'The Australian Worker' June 25th 1930 Page: 10

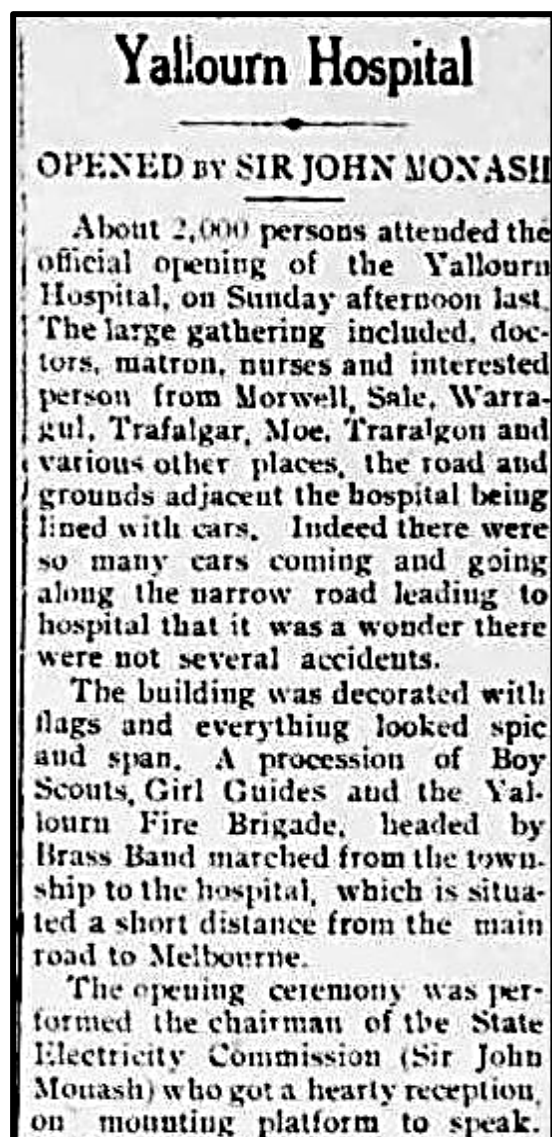


The Hospital at Yallourn from the Valentine Postcard series.

A BRIEF HISTORY OF THE YALLOURN HOSPITAL



Source: 'West Gippsland Gazette' 15th January 1929. Page: 2



Source: 'Morwell Advertiser' 18th January 1929. Page: 3

The following summary of the history of the Yallourn Hospital was originally published on Virtual Yallourn website in November 2012. It is part of an article published by the Yallourn North Action Group.

“Designed by La Gerche and with a similar style to the Hotel, the Hospital opened on 13 January, 1929 by Sir John Monash. About 2,000 people attended the official opening costing with equipment over 32,000 pounds (\$50,000).

It had 24 beds and heating and all other services were operated electrically which meant the hip roof was unbroken by chimneys. When it opened, its staff consisted of two sisters and three nurses. From the day it opened, the hospital was busy and on some occasions even taxed to capacity, especially when an epidemic occurred.

Scarlet fever broke out in 1929 and reached such proportions in early 1930 that two new cottages on the outskirts of the town were converted for use as a temporary infectious diseases hospital and nurses quarters. The 1944 bush fires came within feet of the hospital and patients were evacuated.



News that the hospital may have to be moved was first discussed in 1954. It was considered that by 1960, the Yallourn Open Cut overburden removal operations would have reached such close proximity to the hospital as to make it untenable, even though the lease did not expire until 1961. However in 1956, a review of overburden and coal winning operations was made and it was decided because of several reasons that operations would continue more in the direction of Morwell Bridge. The hospital was renamed in 1950 to Latrobe Valley Community Hospital (L.V.C.H.) and in 1959 it was incorporated. It closed in 1971 when a new hospital opened the same year in Moe.”



Yallourn Hospital in 1929 – Something of which to be proud.

Source: State Library of Victoria Ref: H2009.18/250.

FURTHER READING & PHOTOGRAPHS ABOUT THE YALLOURN HOSPITAL .

Photographs of the opening of the Yallourn Hospital in 1929 can be found on this website at:

<http://www.virtualyallourn.com/media-archive/photos/hospital-opening-lvch>

<http://www.virtualyallourn.com/media-archive/photos/images-yallourn-1929-opening-day-yallourn-hospital>

<http://www.virtualyallourn.com/media-archive/photos/lvch-hospital-staff-member>

Photographs and articles regarding Dr James Moore Andrew can be found at:

<http://www.virtualyallourn.com/media-archive/photos/lvch-staff-member-doctor-james-andrew-later-photo-hospital>

A photograph of Mr Barney Mulgrew, Manager of Yallourn Hospital, can be found at:

<http://www.virtualyallourn.com/media-archive/photos/lvch-hospital-staff-member>

A series of photographs about the staff and nurses of the Yallourn Hospital can be found at:

<http://www.virtualyallourn.com/search/node?keys=nurses>

Further stories and photographs regarding the history, facilities and staff of the Yallourn Hospital can be found by:

1. Typing in the word ‘ HOSPITAL’ into the search field at the top right hand corner of this page
and
2. Press ‘Enter’ on your keyboard.

CAN YOU HELP?

Julie has posted thirty pages related to the Yallourn Hospital on this website and would welcome more photographs and articles about the hospital.

It is no secret that the people of Yallourn were very proud of the hospital. Perhaps there are readers of this article who may have worked there; and perhaps there are those who were patients or maybe volunteers with the Yallourn Hospital Auxiliary. Please feel welcome to contact Julie if you would like to add something to this very important chapter in the town’s history. Thank you.

This article was prepared and presented by Julie George and Roger Spaul for the Virtual Yallourn website in November 2020.