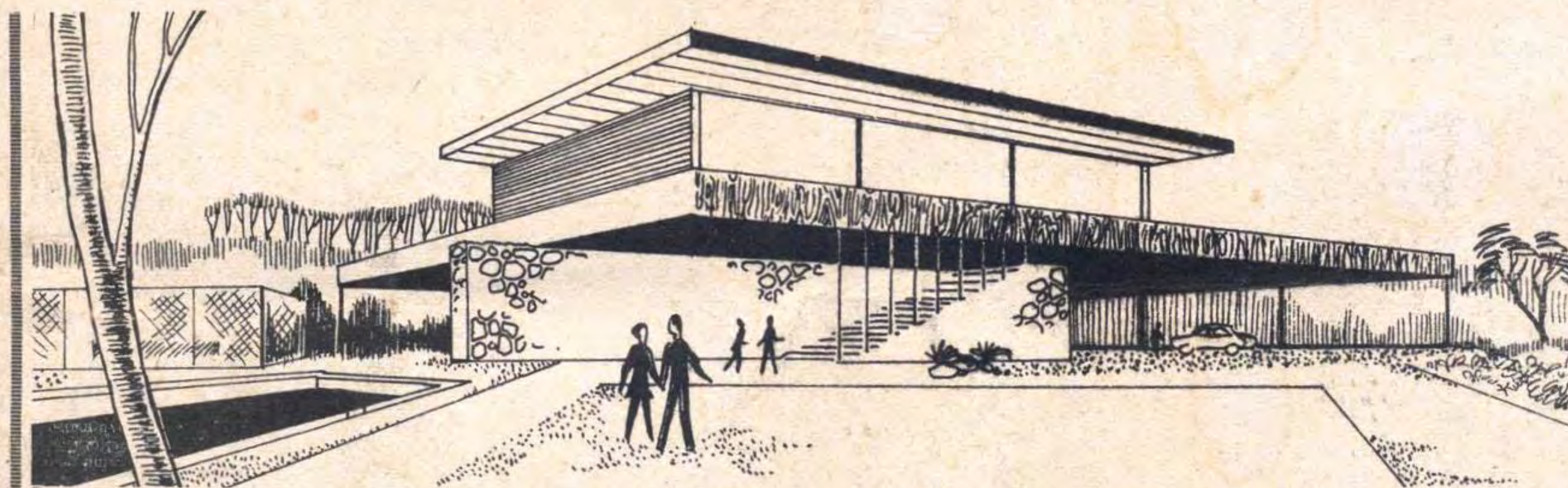


CONTACT



THE STATE ELECTRICITY COMMISSION LATROBE VALLEY REGION MAGAZINE – FEBRUARY 1970.

OUR OWN SOCIAL CLUB CENTRE



The response to the questionnaire, printed in last month's issue has been most encouraging. Over 1,000 replies have been received to date.

We are, however, most anxious to receive more and we are, therefore, re-printing the questionnaire in this issue.

The Centre will provide facilities for

"Pipe dream"

or a

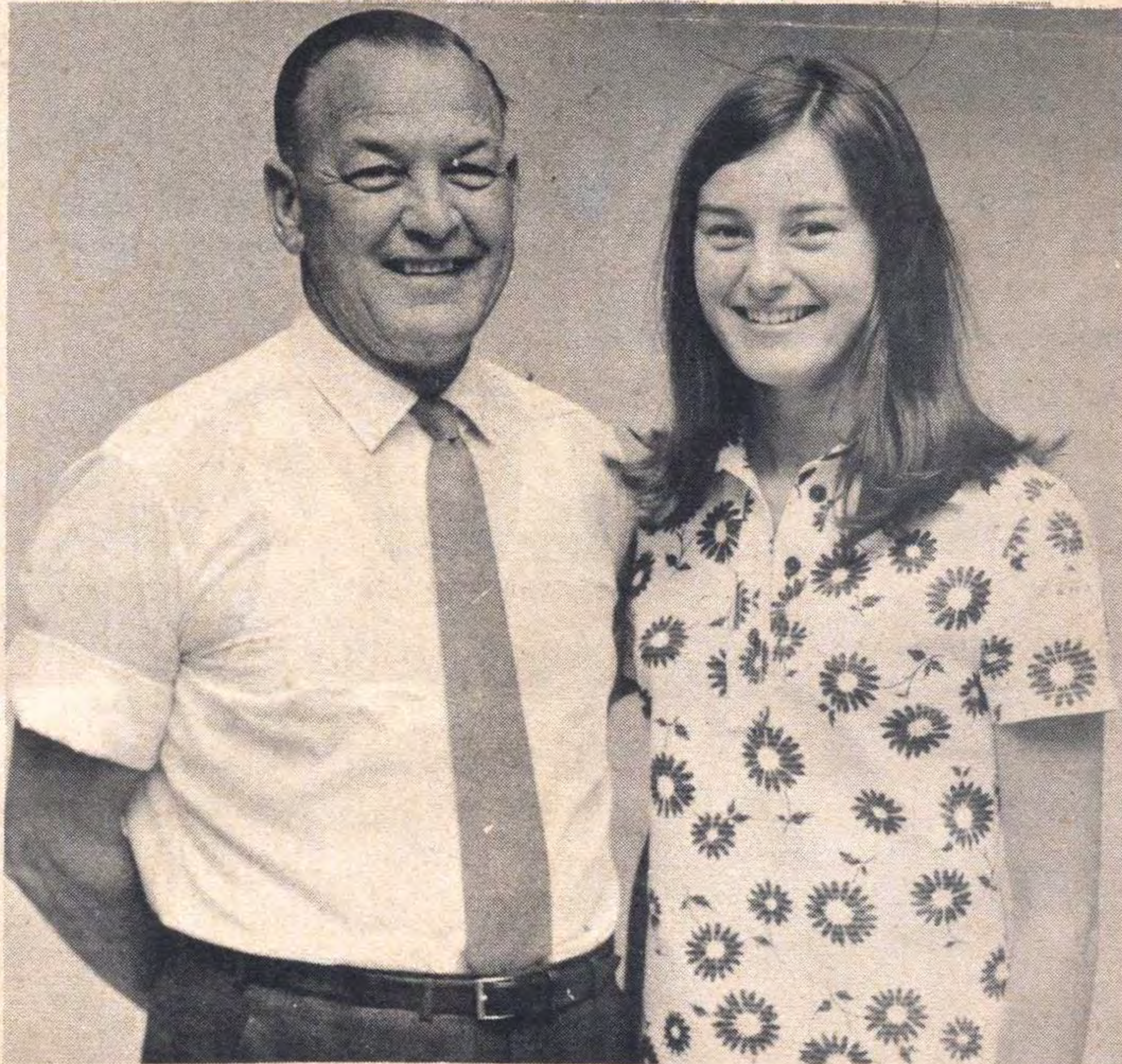
feasible

project?

the whole family and membership will be open to retired personnel who have worked in the Commission's Latrobe Valley Region.

Please let us have your completed questionnaire by March 31, 1970 because it is intended that another approach to Management will be made as soon as possible after that date.

HE'S A PROUD DAD



Proudest man in the Valley is Mr. E.D. (Bill) Cornford, Stores Supervisor, Morwell. His daughter, Mary, was crowned Latrobe Valley Festival Queen at the Festival Ball held in Moe on February 27.

MANAGER'S MESSAGE

Planning, control vital to efficient operation

The modern business budget has come to be regarded as one of management's most effective tools. It consists essentially of two parts:—

- * The preparation of a comprehensive plan of operations, and,
- * The comparison of actual results with this plan. Thus planning and control, the essential functions of management, are also the essential parts of the budgetary process.

Before a budget can be prepared, there are three main components which must be decided. The cost of materials, the cost of labour and the cost of plant. On top of these basic costs, are applied direct and indirect overheads.

These latter two costs are not directly controllable by supervisory personnel. Normally the main cost associated with any type of activity is the labour component and it is the personnel budget accordingly which is the first compiled on the basis of projected performance levels.

It is of interest to note that there is not a significant difference between the total numbers of personnel anticipated at the end of this 1969-70 financial year, and the total number anticipated at the end of the 1970-71 financial year.

However, there will be a change in the balance of numbers employed in different classifications during these periods.

Although the overall objectives of an organisation are usually set by the top management group, the planning for the operations necessary to achieve these objectives is left to the various levels of line supervision.

It is recognised that participation at all levels is an essential part of good budget preparation and is vital for optimum achievement of the plans so developed.

As we are now about to prepare the Regional Budget for the 1970-71 financial year I would commend the above principle of "participation at all levels of supervision"; supervisors at each level of management should be encouraged and helped to genuinely participate in planning the operations for which they are responsible.

Supervisors must have a real feeling of involvement. This approach will not only lend accuracy to the total budget, but it will provide a powerful psychological in-

centive to the participant to achieve the optimum result.

It is appropriate at this time that I should remind you again that our future in the Valley depends largely on our operating efficiency.

The results obtained over the last three years have been most gratifying and I feel

that if we can maintain this trend during the 1970-71 year we will have made a worthwhile contribution towards ensuring the future of the Valley.

I would, therefore, suggest that you accept this as a challenge and keep it constantly in mind when preparing your respective budgets for 1970-71.

HE HAS WHIP (PET) HAND



Stan Wade, Leading Hand Boilermaker in Workshops, Morwell, breeds and exhibits whippets and a 3rd prize in the National Whippet Show in Sydney.

He travels widely to attend shows—sometimes going as far as Sydney—and has won two 1st prizes at the Royal Melbourne Show

Stan came to Australia, from England, 20 years ago and has been with the Commission for 11 years.

CONTACT MART

Wanted to Buy. 3 or 4 piece drum set, good order, suitable for learner. Apply 83 Old Sale Road, North Newborough

* * * * *

Block of land, Newborough, 65x190 ft. roads paid, fully serviced. Ring Morwell 4-2034 Ext. 3457.

* * * * *

Fish or Ski Boat Hartley Plan Moderate V L 13' x 6' Beam On Trailer with 35 h.p. Evinrude \$800 Tel 71623, 6 Riley St., Traralgon.

NOTE TO RETIRED EMPLOYEES

From time-to-time we have news of those who are now on the retired list. We like to know of their activities. How about writing and telling us how you are and what you are doing.

He'll build Blues from the existing foundations

"No radical changes, no extreme experiments" — is the 1970 football policy of Yallourn Football Club's newly appointed Coach, Ron Lee, of Coal Production's Boilermaking Section, Yallourn.

"I intend to build the team on the solid foundations laid down by the previous coach, Don Palmer."

Serving his apprenticeship as a Boiler-Maker-Welder, at the Ordnance Factory, Bendigo, the 35 year-old Ron came to Yallourn at the age of 21 in 1956.

He commenced his senior football with Sandhurst, in the Bendigo League, in 1950, at the young age of 15 years, as a half-forward flanker and rover.

He quickly made his mark with Yallourn under Gerald Marchesi around the forward lines, until he replaced "Bluey" Jackson in 1959, in the centre.

He was appointed playing coach to Yallourn Seconds in 1964, but returned to

seniors during the season. Ron again became Seconds non-playing coach in 1968, but returned to the fray as a player in the middle of the season.

From 1967-68, he was a member of the Selection Committee, then took a spell from activities in 1969 — and now, 1970 finds the quietly spoken Ron Lee in charge of the Blues' football fortunes in Latrobe Valley League.

Mrs Lee, a keen badminton and tennis player, and children Carolyn (13 yrs), Ronnie (12), Beverley (8) and Scott (6) are all Yallourn enthusiasts.

Ronnie and Scott are playing Soccer, but Dad believes they'll be "Aussie Rules" men in time to come.

Ron Lee's a keen International Rules Basketball player, says that some 20 Yallourn Footballers are active in the game it is an excellent basis for football, particularly in body and ball control.

In answer to a question on recruiting, Ron Lee likes to build a team on local loyalty — and named three young players — David McLelan; Geoff Foggo and Paul Wiggins as young star players.

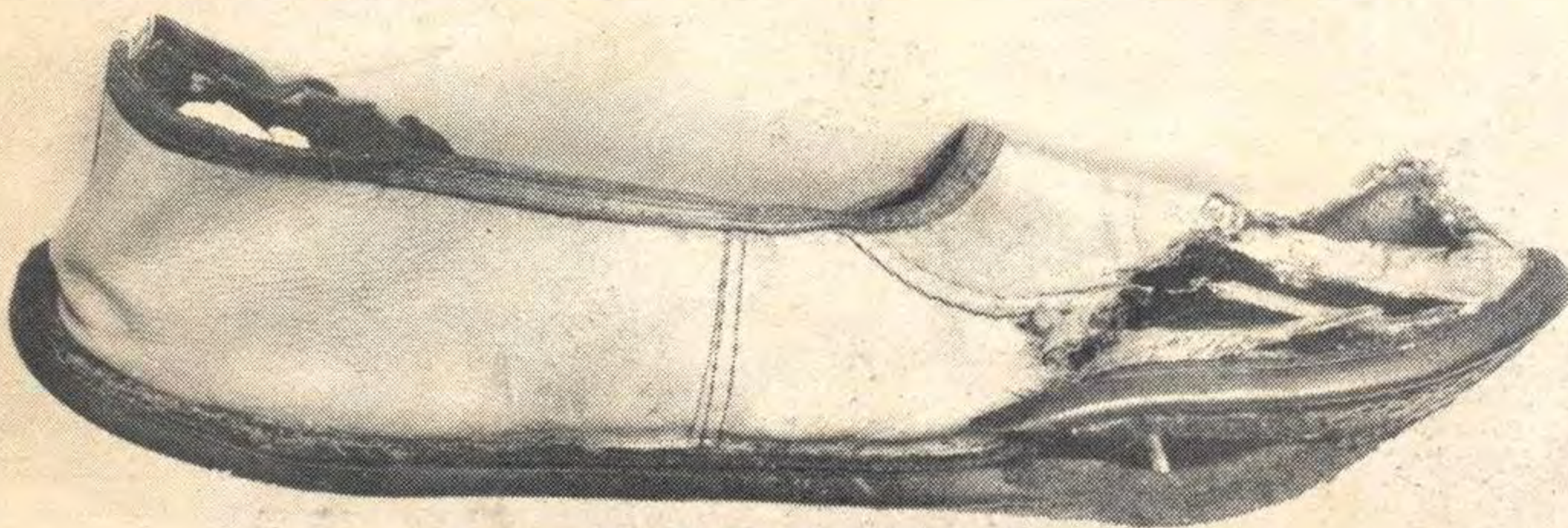


RON LEE
Personality of the Month

"Because we are a small Community, we, in Yallourn, are forced to seek around for players and in this we have done well," claimed Ron; quoting Robin "Buckwheat" Moncur as an example.

The new coach of Yallourn, shows by his great confidence that he will weld Yallourn into a top class football force in Latrobe Valley Football.

GET PROTECTION FOR YOUR FEET



The photograph illustrates the footwear worn by one of our power station personnel who had the very painful experience of having his foot run over by a lawnmower.

The accident occurred while he was mowing his front lawn, and although aware of a small stump protruding out of the ground, he accidentally ran the lawnmower onto the stump, and while he was pulling the mower back off the stump he pulled it back onto his foot; the photographs below illustrate the damage to his footwear.

He was extremely lucky not to lose part

of his foot, and with the aid of some 18 stitches his big toe and a portion of his foot was sewn back to the rest of his foot.

The type of footwear worn by this victim was of a very light material, typical of the many types of casual shoes on the market today and which probably many of us wear when mowing our lawns.

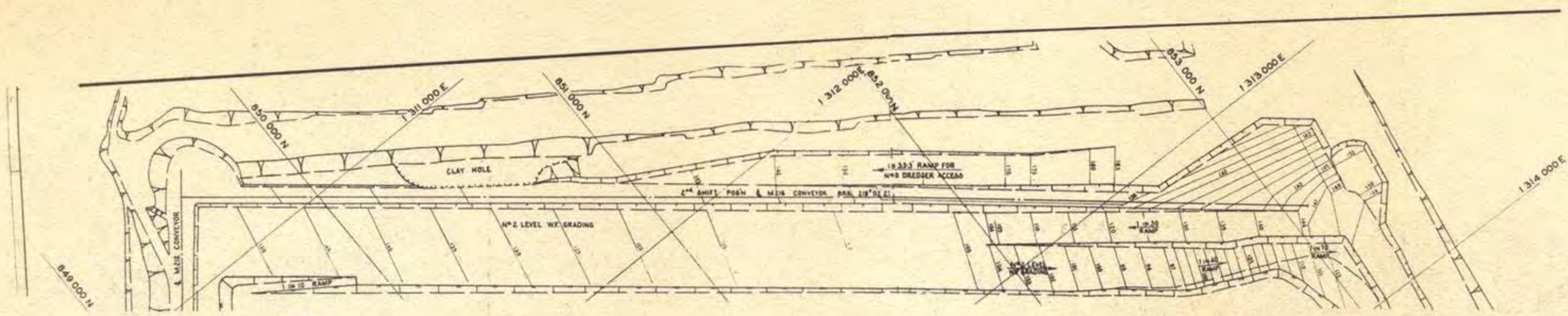
Now perhaps after seeing below what damage the blades of your lawnmower can do to this type of footwear, not to mention the foot in it, perhaps it is worthwhile to put up with a little less comfort and wear something heavier that offers protection such as safety footwear with inner steel toecaps.

Jubilee History now available

The Commission has decided to make its Jubilee History entitled "Brown Power" available to all personnel at the special concession price of \$3.00 per copy. The normal price to the public through booksellers will be \$7.50.

Personnel wishing to purchase a copy of this book should complete a concession order form and present it, together with the sum of \$3.00, to area cashiers.

Concession forms and books are available from the Cashiers' offices at Morwell, Yallourn and Hazelwood.



No 10 Dredger's West Side Story

No.10 Dredger travelled down into the west side of Morwell Open Cut on Monday, February 23, and commenced winning coal on the following Thursday. Prior to this the dredger was given extensive preliminary tests, digging overburden.

These tests have concentrated on its overburden digging capabilities as its annual output will comprise some 2.9 million cubic yards of overburden and 3.3 million tons of coal. Because of the sticky and abrasive nature of our overburden, the ability to handle this material successfully is of major importance.

The accompanying photograph shows the scraper arrangement in the forechute of the dredger. This feature was developed in an endeavour to improve

By
BILL CONROW
Engineer,
Coal Division.

the handling of sticky overburden.

The discharged material from the buckets flow over a steeply sloping plate onto the bucket wheel conveyor. This sloping plate in the forechute is prone to incrustation, which can develop to the extent of preventing material from flowing onto the conveyor belt.

The air actuated scrapers are a new design which are intended to breakup this incrustation allowing the overburden to flow smoothly onto the conveyor. Their effectiveness is still to be proved by further production trials.

The photograph also shows the three men who have guided the machine into production. They are Foreman Jack Andrew, and Dredger Operators.

PAGE 4 - CONTACT



* PICTURED above are, left to right, dredger drivers "Knocker" White, Frank Burney, and foreman Jack Andrew.

Frank Burney and Knocker White.

The operators have been on the dredger during the later stages of construction, and under their control the dredger has been subjected to exhaustive tests of all protection devices.

In addition travelling tests have been made on a 1 in 20 grade and preliminary overburden digging tests have been carried out. These have proved that the dredger can bite into the overburden with an immense appetite for dirt.

The dredger's location in the open cut will remain on the western side for many years, where it will excavate both No.1 and No.2 Levels. On No.1 Level it will dig both overburden and coal above the conveyor level.

No.2 Level will be excavated by ramping down from No.1 Level and digging a 30 ft. face below the conveyor, similar to the present operation of No.9 dredger. The accompanying sketch shows the method of operation on No.2 Level, with the ramp on the northern end of the face and the subsequent excavation of the eastern half of the ramp using an auxiliary conveyor. No.10 dredger's steep ramping capabilities (1 in 20

grade) keeps this quantity of auxiliary conveyor coal to a minimum.

Eventually when the west field faces are further developed No.10 Dredger will dig number 1 and 2 levels, No.11 dredger No.3 and 4 Levels and No.9 dredger No.5 and 6 levels, with each dredger digging a 60 ft. top side face in front of the conveyor and a bottom side cut behind the face conveyor.

No.10 Dredger was manufactured by Export Union (a Union of Krupp and Lubecker) represented on this dredger by Marfleet and Weight whose erection subcontractors were J.R. Pillars. It has a rated output of 1750 cubic yards of overburden per hour and 1600 tons of coal per hour.

Its performance under test conditions and in normal operation suggest that it will efficiently accomplish the big overburden removal and coal winning programme that is ahead of it.

The fact that this machine has been commissioned so smoothly is a tribute to the manufacturers, the construction subcontractors, the S.E.C. Engineering staff and the Dredger Operators.

YALLOURN LIBRARY LEND'S 84,000 BOOKS A YEAR



The Yallourn Public Library Service provides a lending service of books for home reading. The books are both fictional and factual and, in addition, there are pamphlets and magazines for both adults and children.

Membership of the library is open to all adults who work or reside in Yallourn and to others who reside within a four mile

radius of the Yallourn Post Office. The service is available to all members of the family and also to children, irrespective of their place of residence, who attend school in Yallourn.

The Library contains a comprehensive range of reference materials for use in the Library. Among the many subjects covered are engineering, music and photography and general knowledge such as can be obtained by reference to an encyclopedia.

The resources of the library are not limited to the 23,000 volumes which are stocked. Through the development of Inter-Library loan books and other materials may be borrowed from other libraries throughout the State of Victoria and from the National Library in Canberra.

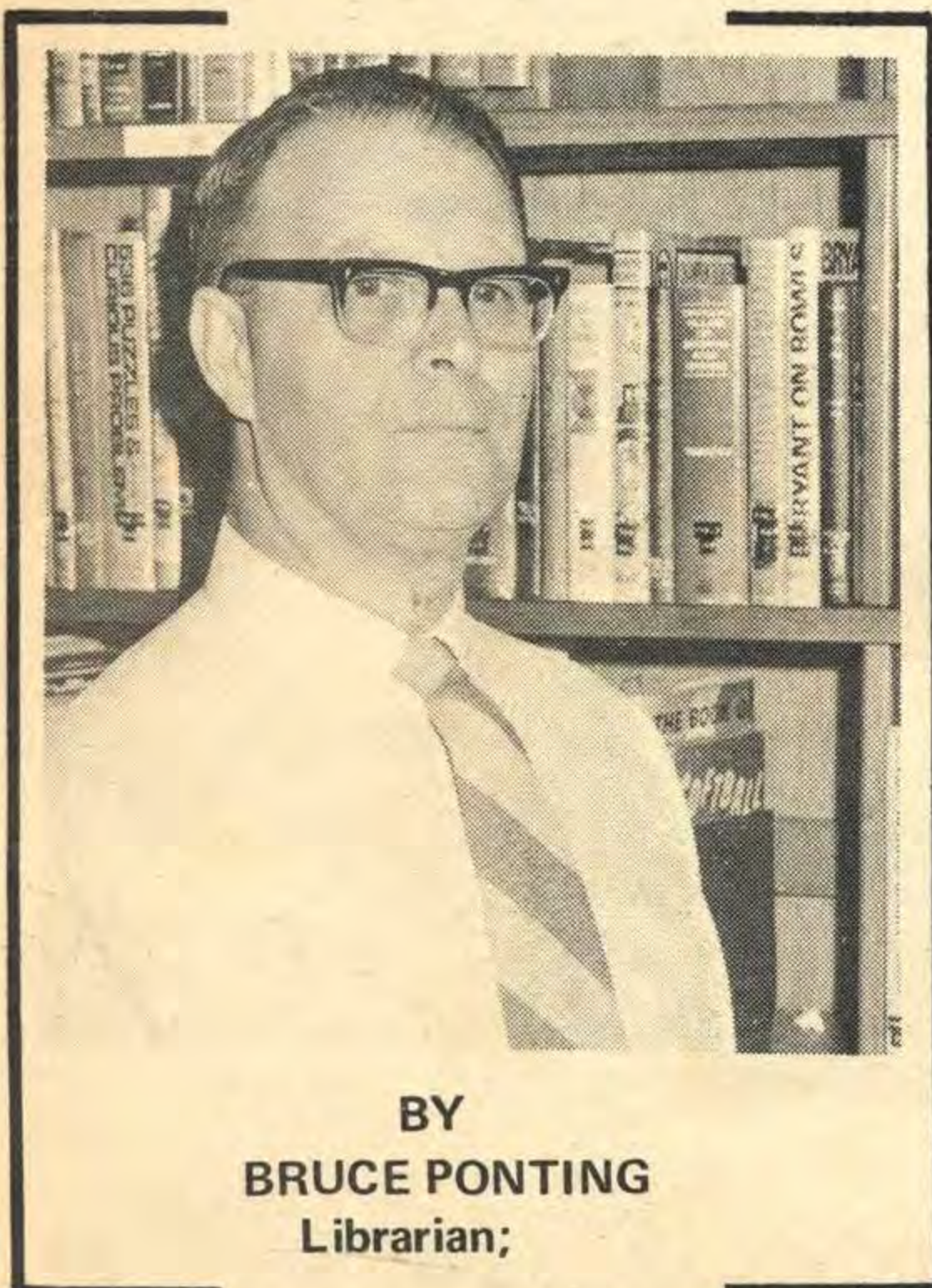
On behalf of the State Film Centre, documentary films and projection equipment can be loaned to groups and organisations within the Latrobe Valley.

A selection of up to 60 films is available each month and regular users receive, by mail, descriptive lists of these films. The book stock consists of 18,000 volumes for adults and 4,800 for children.

There are 1,500 adults and 600 children listed as members.

Annual book loans total some 65,000 to adults and 19,000 to children.

* PICTURED above are the library staff. They are from left: Ann McInnes, Helen Ashmore, Betty Kemp, Barbara Kelly, Helen Last.



BY
BRUCE PONTING
Librarian;

radius of the Yallourn Post Office. The service is available to all members of the



PROMOTED TO MELBOURNE ...

A well known Valley personality Mr. R. A. (Ron) Farrington, Superintendent of Stores, will shortly be leaving to take up the position of Superintendent Central Stores Group in Melbourne.

In May this year he will have completed 30 years service with the Commission, 15 of which have been in the Valley. He joined the Commission as a Junior Storeman.

Ron will be missed in the Area where he has taken a keen and active interest in many community affairs.

He is a member of the R.S.L. and has held several offices in the Morwell Branch.

He is a foundation director of the Morwell Co-operative and has been Chairman of the Board.

He has been a Committee Member of the Morwell Kindergarten, the Morwell Pony Club and the Morwell Workshops and Stores Social Club.

In addition to all this he has been a member of the Morwell High School Advisory Council, President of the Morwell S.E.C. Staff Social Club and was the first President of the Association of S.E.C. Latrobe Valley Social Clubs.

We wish him well in his new appointment.

Thanks for supporting our entrants

The combined Social Clubs of the Latrobe Valley Region wish to thank all personnel for the support given to their two entrants in the recent Latrobe Valley Festival Queen Contest.

The total raised by Miss MAREE CLEGG (Yallourn) and Miss TILLY VERBERNE (Morwell) exceeded \$400.

Winners of the "Special efforts" conducted were Mr. W. Just of Transport Workshops, Morwell, who received a transistor radio, and Mr. P. Alford of Central Workshops, Yallourn, who received a gentleman's wrist watch.

THE POWER OF SPORT!



Well known tennis star Dick Wilson, Hazelwood P/S. Superintendent pictured with Cr. Ted Best, Lord Mayor, Melbourne City Council who, as Australian sprint champion represented his country in the

1938 Empire Games.

The occasion of their meeting was a visit to the Latrobe Valley Region by the Lord Mayor and City Councillors.

Second year in office for Jack



Mr. W. J. Penney was recently re-elected President of the Morwell SEC Staff Social Club. This will be his second year in office.

During the past year there has been a full programme of sporting and social events, all of which were well supported.

For the coming year the programme will include the functions to which members have become accustomed and which have been enjoyed by all who attended them.

It is hoped that other functions can be arranged but, if this is to be done, greater participation by members in organizing events is essential.

For the views of members to be known and their suggestions discussed it is desirable that there be larger attendances at Annual General Meetings.

HAVE YOU MADE A WILL ?

A great deal of worry, distress and discomfort can be avoided if each of us spends only a few minutes to make out a will.

Many of us have not done this, and we should give some thought to those who will be left behind when we are no longer here.

No matter how few our belongings, no matter how small our property, a will is just as important to us as it is to those possessing great wealth and large estates.

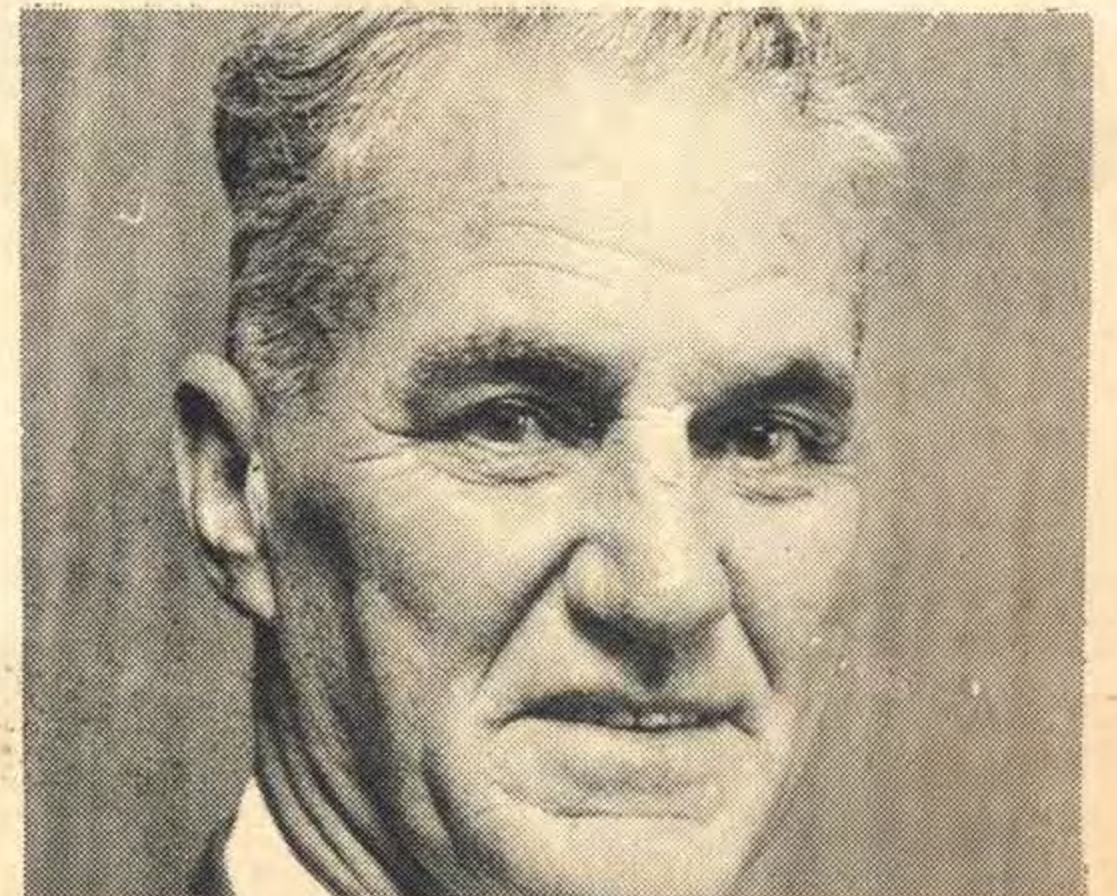
A will can be drawn up on a plain sheet of paper or on the standard form, copies of which are obtainable at stationery shops. You may wish to have a solicitor

assist you or you may do it yourself; in the latter case you should use plain simple language.

The will must be signed by you and two witnesses, who must not be from those who will benefit from your will and must be over 21 years of age. All those signing must use the same pen, the document must be dated, and all signatures must be made in the presence of all others who are signing.

You may appoint by naming him or her in the will, an executor who will handle your affairs. Make sure that your will is kept in a safe place and that your executor is aware of that place.

**BY GEORGE EVANS
Amenities Officer.**



Trainee draftsmen, surveyors



* PICTURED above are the 1970 intake of trainee draftsmen and surveyors. From left they are: Max Payne, Evan Rowlands Robert Harris, Garry Gooding, Brian Aplin.

SOCIAL CLUB QUESTIONNAIRE

● Please complete

(1) Do you consider the proposed project

Necessary * Yes/No
Feasible * Yes/No

(2) Where would you suggest it be built (more than one location suggestion welcome)

.....
.....
.....

(3) Would you be prepared to participate if not built on the location you suggest

* Yes/No

(4) Would you make a weekly contribution of 15 cents for membership

* Yes/No

NAME:

LOCATION:

* Cross out whichever does not apply.

NOTE: This questionnaire is to gauge the support and interest that can be expected and is not an authority to make a deduction from your wages or salary.

● Return promptly to:

- MR. VIC BELL (Workshops, Hazelwood)
- MR. BERT DIXON (Turbine Maintenance, Hazelwood)
- MR. NOEL EDWARDS (Factory Area Store, Morwell)
- MR. LEX DERHAM (Power Stn. Briquette Factory Canteen Morwell)
- MR. FRANK FLETCHER (Yallourn Power Station)
- MR. FRANZ ONGER (Coal Production Maintenance, Yallourn)

Latrobe Valley Festival



**MARCH
'70**

"Festival Fun Month"

PROGRAMME

ARE YOU INTERESTED IN LV FUTURE?

Are you interested in the future of the Latrobe Valley? If you are, the Latrobe Valley Development Committee would like to hear of any ideas you may have on how to help accelerate development in this Region.

This Committee was formed by the State Government in May, 1968, and has representatives from the Shires of Morwell, Narracan, PAGE 8 - CONTACT

Traralgon and the Cities of Moe and Traralgon.

There are also three private members nominated by the Minister of State Development, a full-time Promotion Officer of the Division of State Development and a representative from the S.E.C. who is the current Chairman.

The specific object of this Committee is to submit proposals to the State Government on how to firstly stabilise, and then expand, the economy of this area by the introduction of a range of light and heavy industries, com-

asks
GRAHAM BLACK
who is
chairman of
the LVDC

mercial and industrial undertakings, schools, colleges, universities, etc. and in fact anything which will provide additional employment and growth.

The Government has assured us that there is no limit to the assistance it will give to any propositions designed to give effect to the policy of

accelerated development of this area.

Quite a deal of success has been achieved in increasing the use of female labour and excellent co-operation has been obtained from local Municipal Authorities.

A few current examples of the type of expansion taking place are Diamond Cut Lingerie plant at Morwell, expansion of Ericssons in Morwell, Yarragon Textiles in Moe, Robins Shoes in Traralgon and Symingtons at Churchill.

Local assistance has been freely given and a most val-

uable and complete survey of resources has just been completed by the Morwell Jaycees.

The Committee has launched a substantial advertising campaign and prepared an attractive brochure setting out the advantages and attractions of the area. This will be circulated throughout the Melbourne metropolitan area, England, Europe and America, with the main object of attracting industries employing male labour.

CONT. PAGE 15

Regional Co-operation is basis of Festival says...

The Latrobe Valley Festival was inaugurated as a result of a public meeting held in February, 1968.

Its purpose was to promote one Festival covering the entire Latrobe Valley area to replace smaller festivals which had been run in individual towns from time to time with varying success.

The Festival Council's role has been one of stimulating and co-ordinating the activities of already existing representative groups in the area, and not of directing.

Months of meetings, planning and negotiating have resulted in the completion of plans for an attractive programme designed to cover a wide range of popular sporting and cultural interests.

It is certain that the Latrobe Valley will be host and "on show" to many thousands of visitors during the period of the festival and that the area will receive substantial publicity and benefit greatly, culturally, socially and commercially.

All organisations have shown a truly regional outlook in this exercise and financial support from local Councils, industry, commerce and the public has been generous.

Our Queen competition, run in conjunction with the Festival, will donate all proceeds towards the establishment of an Elderly Citizens' Hostel at a suitable site in the Latrobe Valley.

GRAHAM BLACK
President,
Latrobe Valley Festival Organisation



It is hoped to continue this Festival on a bi-annual basis and that each Festival will have a major impact on the cultural, sporting, industrial and commercial life in the Latrobe Valley and bring into being a truly Regional community outlook.

To make the Festival complete, the Council has requested all householders and owners of buildings and commercial premises to make a special effort, by means of decorations, lighting and floral displays, to have the Latrobe Valley looking its best to welcome and impress the many visitors expected during the month of March.

SOMETHING FOR EVERYONE DURING MONTH OF MARCH

An attractive program setting out What's on?? when and where has been published and 15,000 of these were distributed throughout the Valley prior to the commencement of the Festival. To give you some idea of the wide range of interests covered, there are The Fire Brigade Demonstrations,

Water Skiing, Sailing, Swimming, Bowls, Tennis, Golf, Football, Soccer, Cycling, Little Athletics, Basketball, Racing; there are also Concerts, Light Opera, Drama, Art, Flower and Dog Shows, Expo Electric exhibits, Veteran Cars, and a number of other attractions to ensure that all tastes are catered for.

CONTACT - PAGE 9

RETIRED

On February 9 Mr. Robert (Bob) Martin a Leading Hand Cleaner in Central Workshops Yallourn retired after eleven years continuous service with the Commission.

Born in Preston, England, Bob came to Australia in 1927 to join the Commission and was employed on clearance work at the sites of both the Latrobe Valley Community Hospital and the Yallourn Hotel.

He then made his way to Yarram where he was engaged in various activities and subsequently joined APM in 1938.

He later worked on the electrification of the Gippsland railway line and rejoined the Commission in 1959.

He is retiring to a dairy farm at Glengarry.

At a function to farewell him he was presented with a wallet and a watch, the gift of his workmates.



On Tuesday February 24 Mr. John Roth retired after 17 years service with the Commission.

John, who hails from Hungary is a shy man and, at his request, no formal function was arranged to bid him farewell. He has travelled extensively and, in addition to his excellent English he also speaks his native tongue and German and Portuguese.

He started as a builders' labourer on construction and retired as a trades assistant cleaner. He has two sons-in-law, four grandsons and one grand daughter employed by the Commission.

A versatile man he lists among his hobbies:- playing the accordion, collecting stamps, gardening and wood carving.

He was presented with a

gold calendar watch and for Mrs. Roth there was a brooch.



Mini Ranching - the new SEC method of relaxation

From the gates of the Commission's works areas throughout the Latrobe Valley, we see a daily exodus of diligent and faithful workers. Weary of body and mind from their intense physical and intellectual exertions amid the clamour and roar of industrial activity, they stagger out to rest, recuperate, and refresh themselves for still further valiant efforts on the Commission's behalf.

In this vital process of regeneration from the dire stresses of "industrial fatigue", the varied recreational interests of the S.E.C. employees plays an all-important role.

Not least among these recreational pursuits is the fascinating pastime of "mini-ranching". In recent years, scores of S.E.C. employees, particularly those on shift duties, have tired of such mundane hobbies as golfing, boating, fishing, bird-watching, etc., and have responded to the call of the wide open spaces of ten or twenty-acre blocks around the Jeeralangs and Haunted Hills.

There, amid the soul-soothing blissful surroundings of Nature's green wonderland, one may survey, with deep satisfaction, one's own vast herd of 5, 10, or may be even 20, contentedly ruminating cattle. (Ruminating, of course, is the somewhat fancy way of saying "cud-chewing"). Imagine, too, the tremendous STATUS SYMBOL of being able to link one's normal occupational status with that of "GRAZIER"!!!!

Small wonder, then, that there is a ready demand for the numerous plots of grazing

land that have become conveniently available for lease as a result of the S.E.C.'s fire

to act as an agricultural consultant, doubtless as a result of the rapidly burgeoning interest in agricultural pursuits.

By
BRIAN GREGORY
Asst. Charge Eng.
Yallourn P.S.



For those of you who have not yet responded to the call of "mini-ranching", there is still time to grasp your opportunity. Areas for lease are almost constantly being advertised and lease plans are available for inspection at the Property Office, Broadway, Yallourn, and at the Forestry Office, Eastern Road, Yallourn.

For that dread feeling of "industrial fatigue" take the latest sure-fire cure and hurry now to get your own "mini-ranch" under way. Even those of you who, by some miracle, never suffer from "industrial fatigue", may reflect that half your tax is going to subsidise the "cow-cookies". The answer here, of course, is, "if you can't beat 'em, join 'em'!!!"

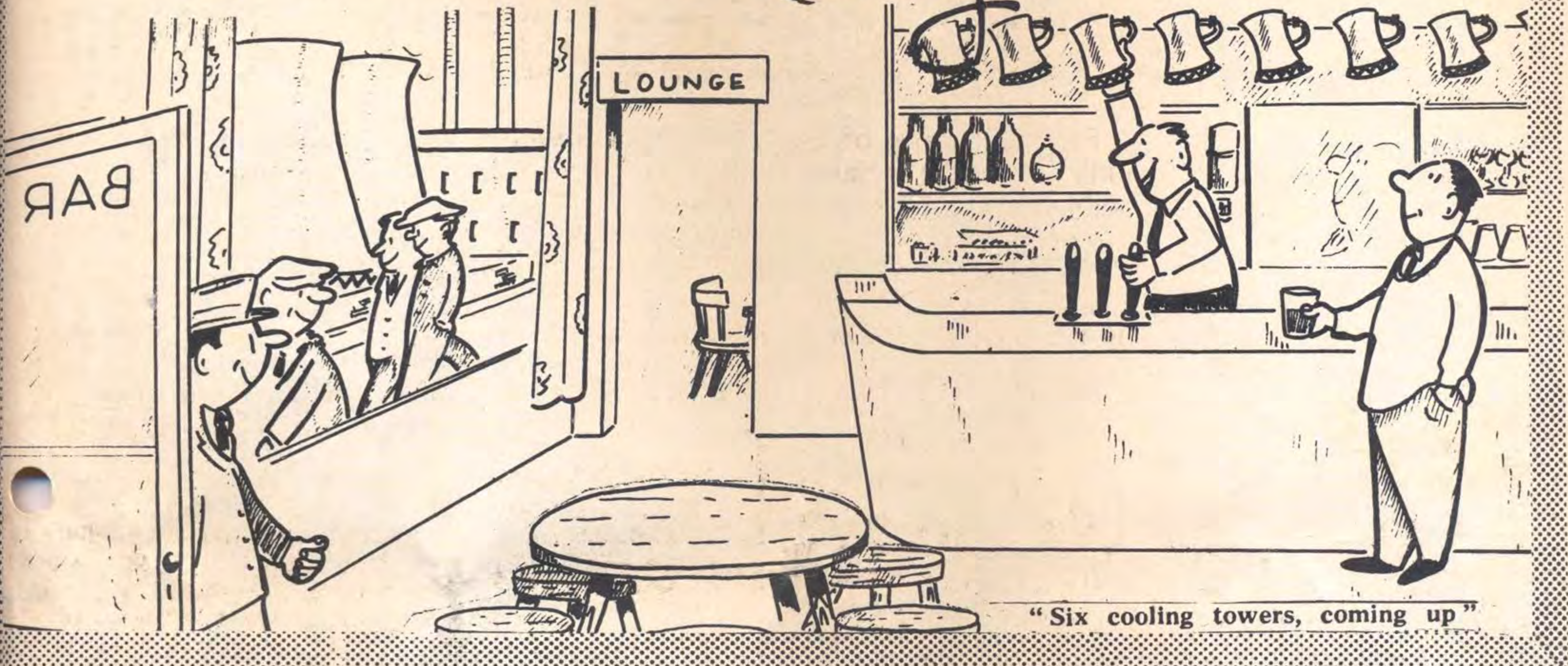
Roll up then, and inspect those grazing lease plans. And, once again, just think of that wonderful STATUS SYMBOL of being able to call yourself a GRAZIER!!!

One enterprising electrical engineer has even undertaken

TRAVELLERS TALES

Many of our personnel, whilst on leave, travel to many parts of Australia and to other countries. Their experiences would be of great interest to the readers of CONTACT. Any hints or advice they can give would be most helpful to those who may travel in the future.

Contact Laugh-in



STORES SOCIAL CLUB BELIEVED AREA'S FIRST

Formed at a meeting on April 2, 1937, the Yallourn Stores Branch Social Club is believed to be the area's first social club.

The first office bearers were :- President, Mr. Vic Colvin (now retired); secretary, Mr. Barry Callinan; treasurer, Mr. Jack Chapman.

On 21st August, 1968, as a result of a request from Morwell Stores personnel, the title was changed to the Latrobe Valley Stores Group Social Club, with membership open to Stores personnel from both Yallourn and Morwell.

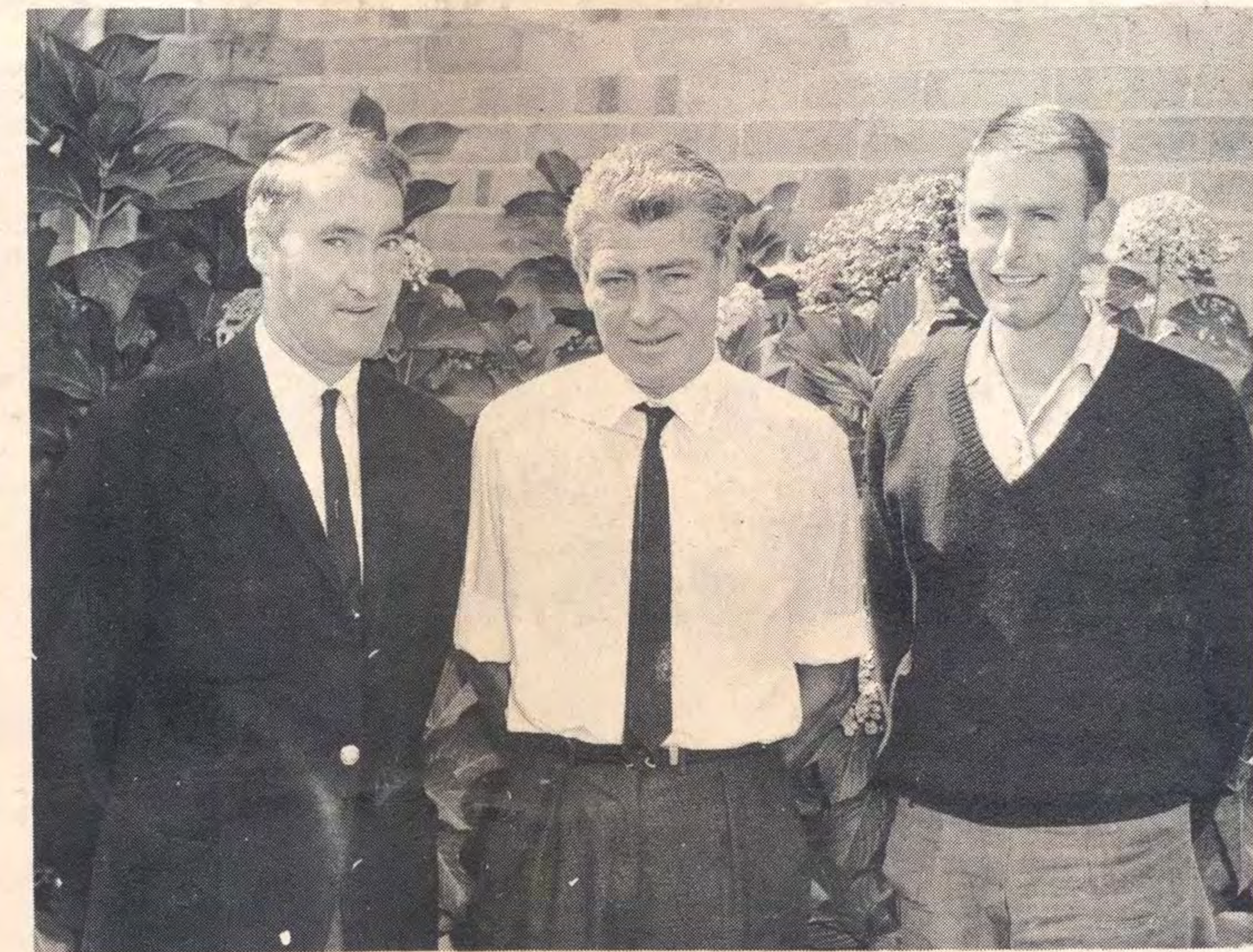
The first office bearers were :- President, Mr. Rupert Bartley; vice-president Mr. Alan Cameron; secretary, Mr. Spencer Goss; treasurer, Mr. Peter Smith.

The aims of the club are the fostering of friendship and arranging social functions which include cabaret dances, smoke nights, ladies nights, and children's picnics. At Christmas time the club arranges for hampers to be purchased by members at favourable prices.

Currently, discussions are proceeding on arrangements for a function at which members can entertain former members who have either retired or have been transferred to other sections.

From an original membership of about 10, the membership has now grown to 40.

The annual subscription works out at



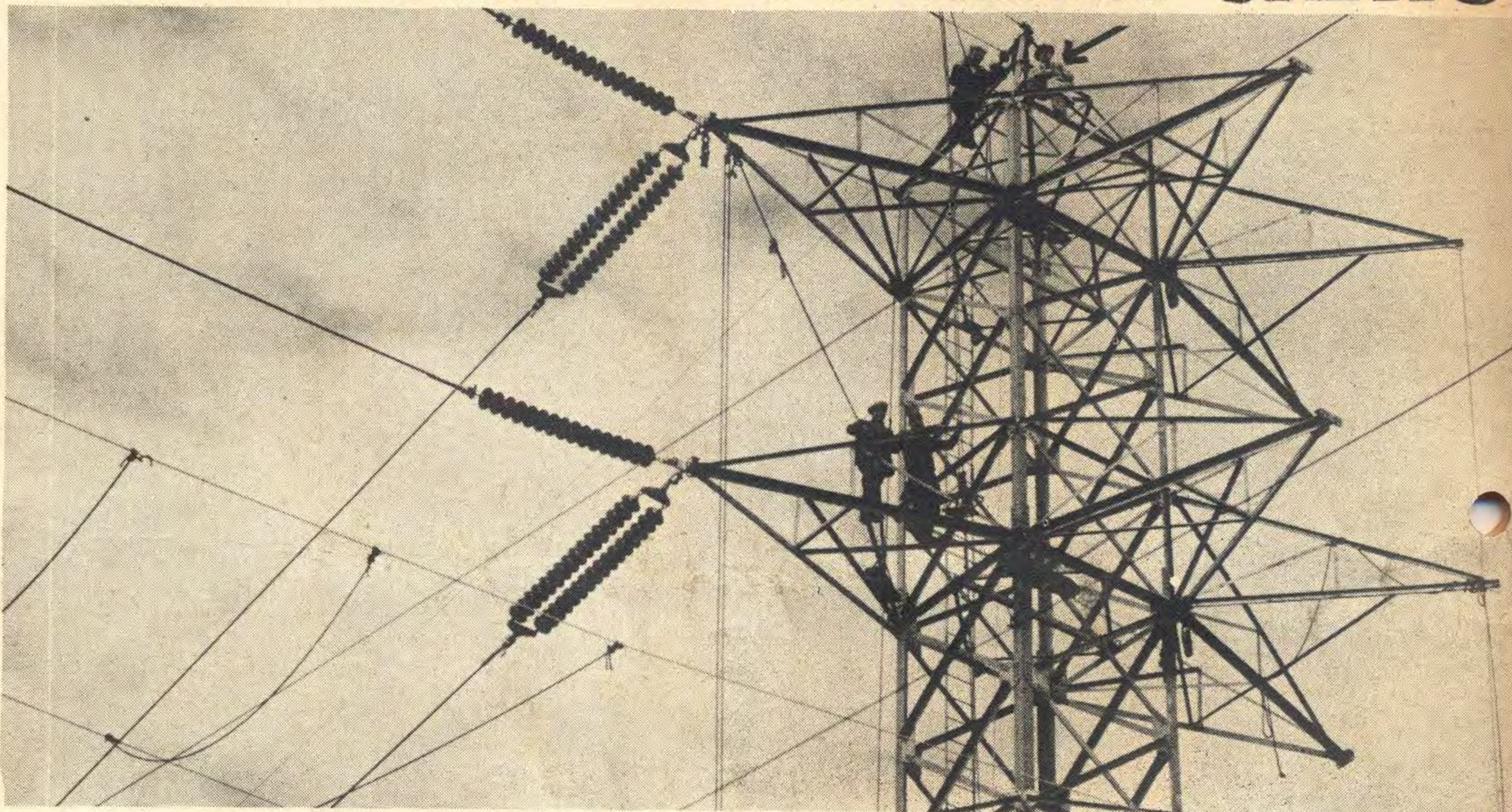
10 cents per week, and club activities are financed from these subscriptions and the club's canteen profits.

In addition to other activities, arrangements are also made for parcels to be sent to members who may be in hospital, and presentations are made to members on the occasion of their retirement.

Anyone who is eligible for membership of the club is invited to contact the secretary, Mr. Spencer Goss (2464).

* IN the picture are club officials, left to right, secretary Spencer Goss; treasurer Peter Smith, and president Bryan Spencer.

OUR PHOTOGRAPHERS



The activities of the busy and important Photographic Section are not very widely known. It is true that its members are seen at many farewell functions but there are many other facets to their duties.

Photographs of important visitors, of progress on major projects and of the commissioning of new plant are all extensively used in the field of public relations.

When investigations are being carried out on plant operation, plant failure or accidents it is frequently necessary to have photographs and, often, large numbers of prints are required.

Reports to manufacturers, insurance claims, coroners reports, safety campaigns - for all of these the services of the section are often needed.

The production of colour slides and cine-film is but another function of the section.

In an average month some 350 pictures are taken - over 4,000 per year. Assignments are at a steady 100 per month which means an average of 4.5 per working day. The photographers are sometimes required for long periods outside normal working hours both at night and at weekends.

From chimney tops to underground tun-

nels and to many other places the photographers go. From bosun's chair to helicopters and by many other means of access and travel the photographers get on the job,



CLIFF CLEVERLEY

Royalty, Prime Ministers, Ambassadors, Consuls, Beauty Queens and Laborers all come before our cameras.

As well as being a versatile photographer a steady nerve and no fear of heights is essential. Try filming the derailment of a locomotive only eight feet from the de-

railment point when all that one can see in the eye-piece are the wheels of the locomotive looming large and when it's anybody's guess as to where the derailed machine will finish up.

Try photographing the pulverised fuel burning in a major unit boiler during a load shedding test. This is a real "nerve tester" as a "cough" in the combustion chamber and there is little chance of dodging the sheet of flame which may leap through the inspection door.

From time-to-time we are given assignments for the Police Department and a strong stomach is most necessary when undertaking some of the more unpleasant ones.

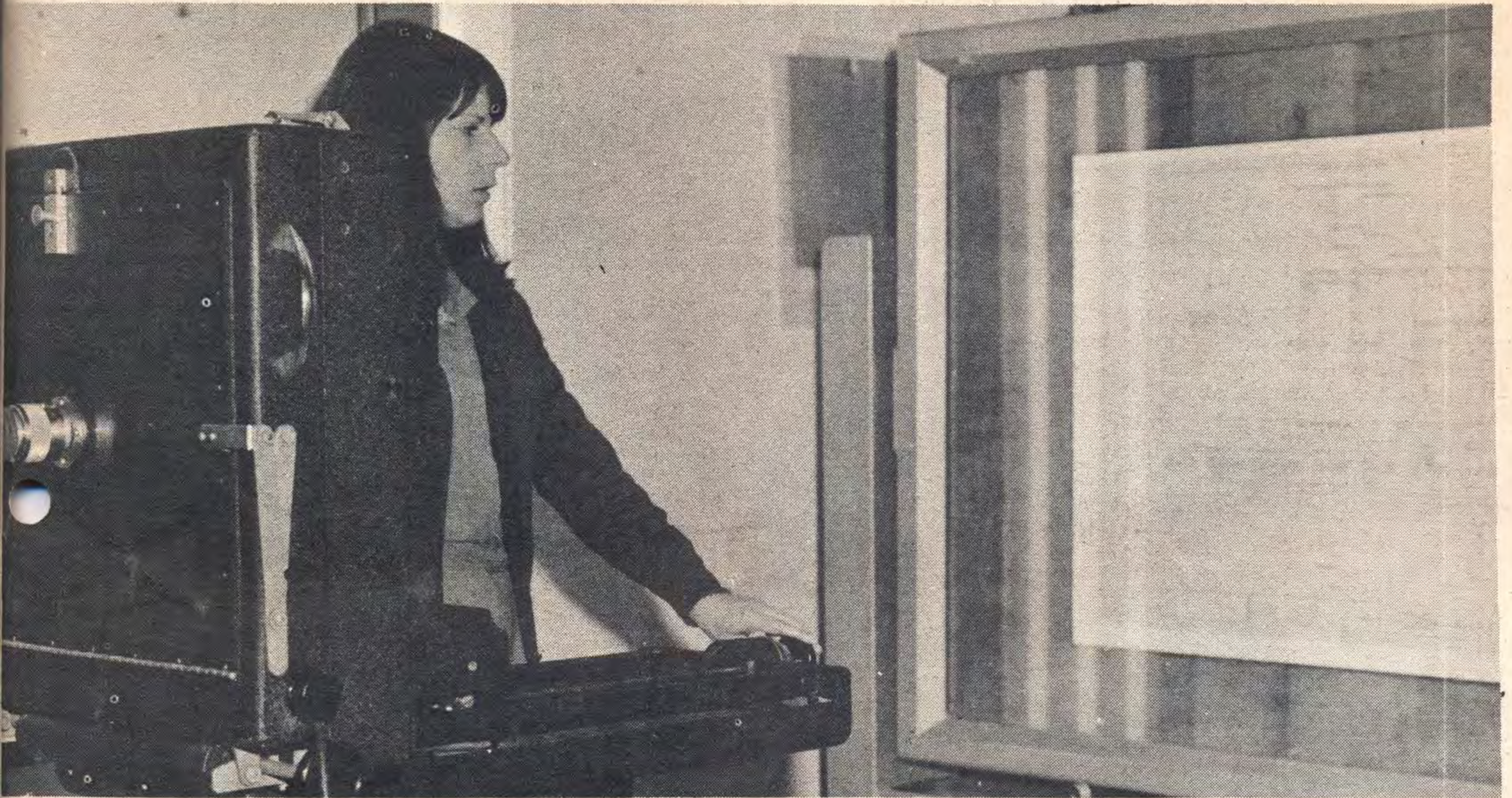
A colour laboratory is part of the dark-room complex and here all colour films and colour prints are processed.

The use of colour prints in technical as well as public relations photography is expanding rapidly. On urgent work same-day service is provided.

An interesting feature of the work carried out by the section is the recording, on tape of the various complicated processes so that, whilst working in total darkness, the following of the instructions on the tape makes it possible to do away with timing clocks or other devices.

In the reproduction section plans, charts and drawings are recorded on film from which reproductions in the form of prints

NEED STEADY NERVES



or transparencies can be produced at short notice in any size up to five feet by four feet.

Thousands of drawings have been put onto film and the originals destroyed, the negative being available, on demand, for reproduction.

* ON the opposite page is a picture depicting the hazardous assignments which our photographers have to undertake at times. Cliff Cleverly (arrowed) perches on top of a tower. In the picture above Miss Irene Kieszkowski operates a reproduction camera in the photographic section.



JACK HINSELWOOD

The photographers' job can be pleasant or unpleasant, it can be easy or dangerous, but there is no doubt it is full of variety and challenge.

TURTLE CLUB AWARD



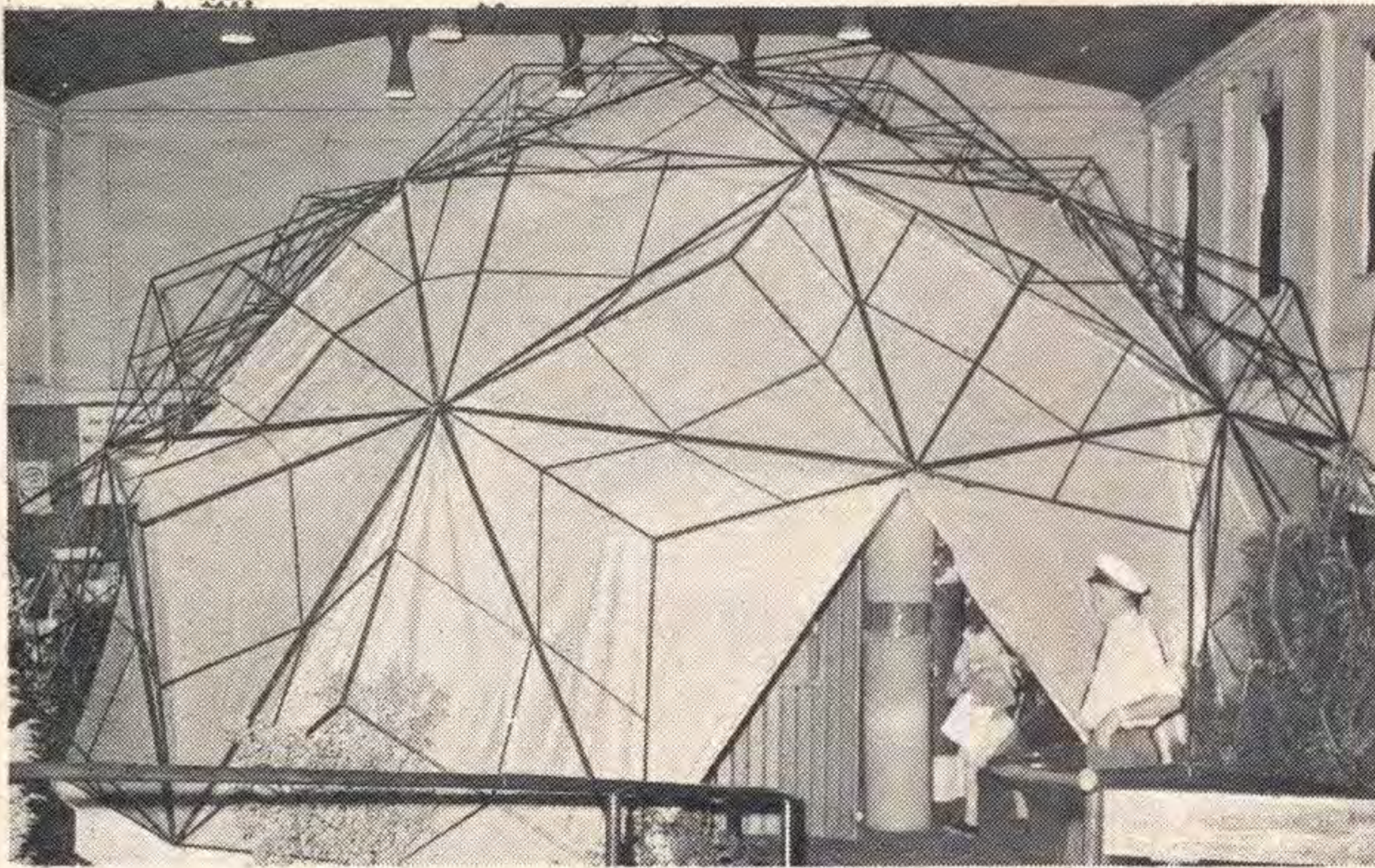
Leading hand instrument maker, Peter Foley recently received his Turtle Club award from the Manager.

On September 24 last year Peter was working on the burner floor level at the Hazelwood Power Station when he was struck on his safety cap by a 10 inch length

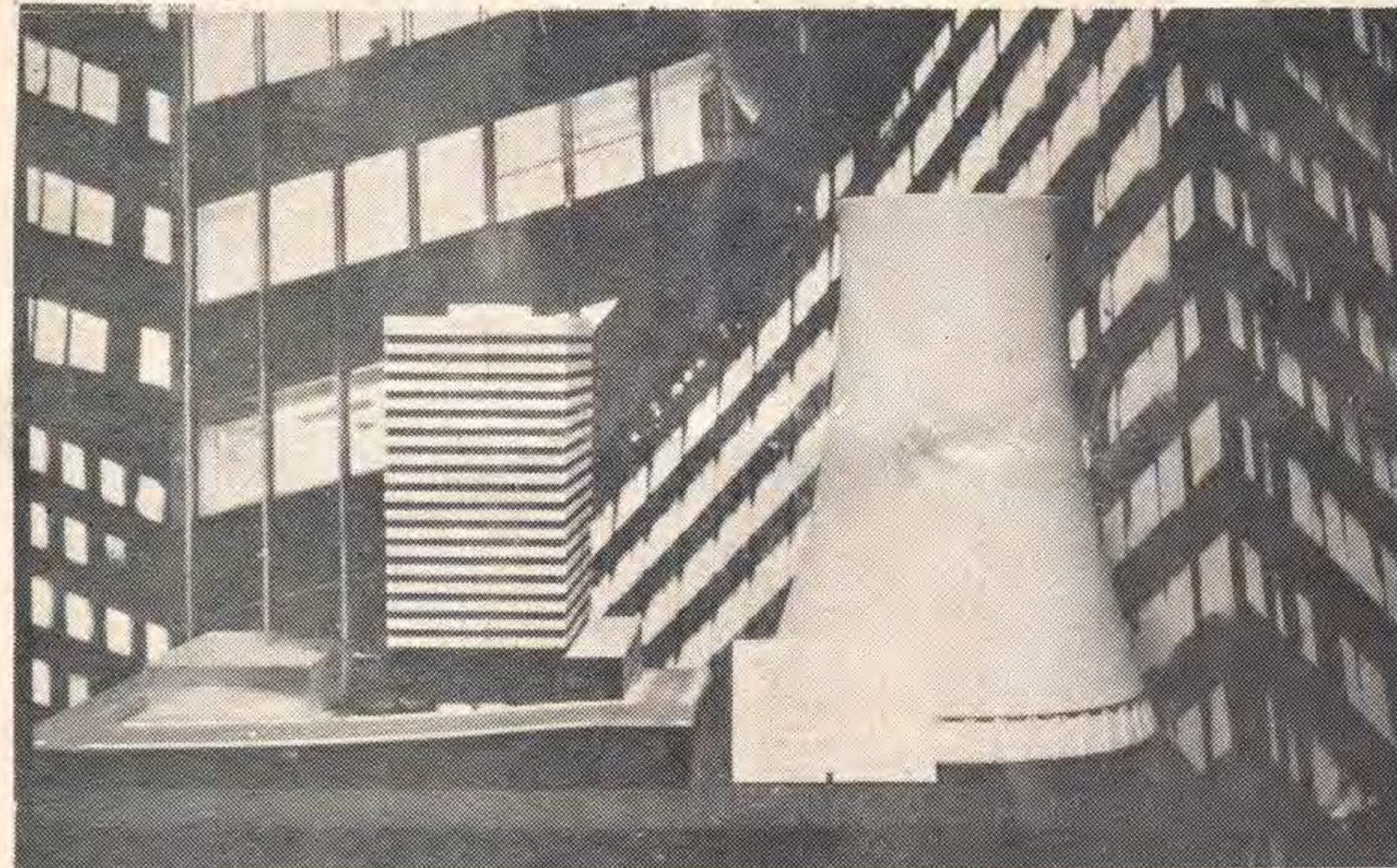
of heavy angle iron which had fallen 35 feet.

* IN the picture Peter, second from right, is pictured with from left, Assistant Manager, Mr. Graham Black, Safety Officer, Mr. George Troke, and the Manager, Mr. J. W. Schulz after he was presented with his award.

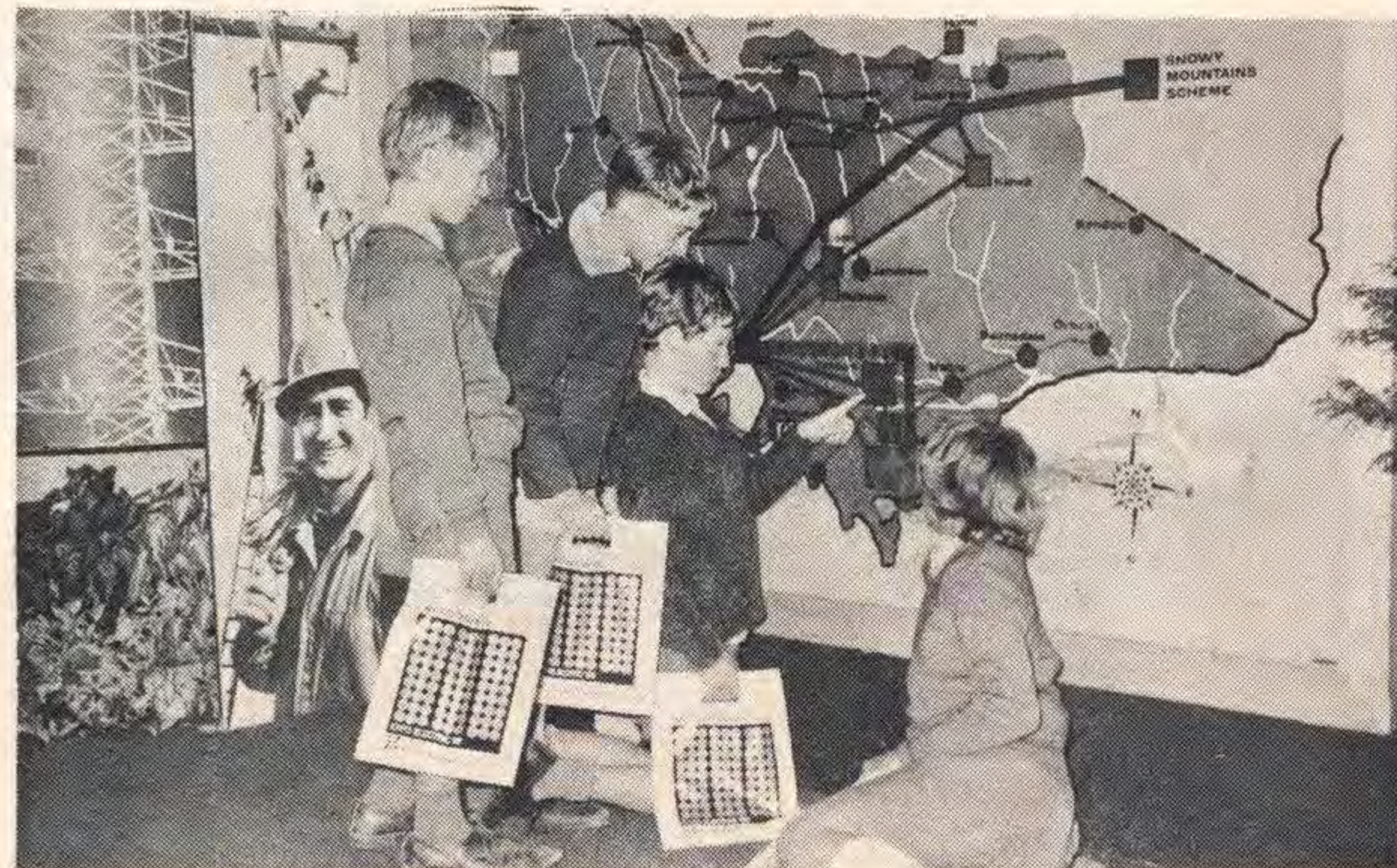
'IN CONTACT' WITH EXPO



* The Dome of Magic.



* Scale models of Monash House and one of the two Yallourn "W" Power Station Cooling Towers.



* School children study a map of the Commission's State-wide electricity system.

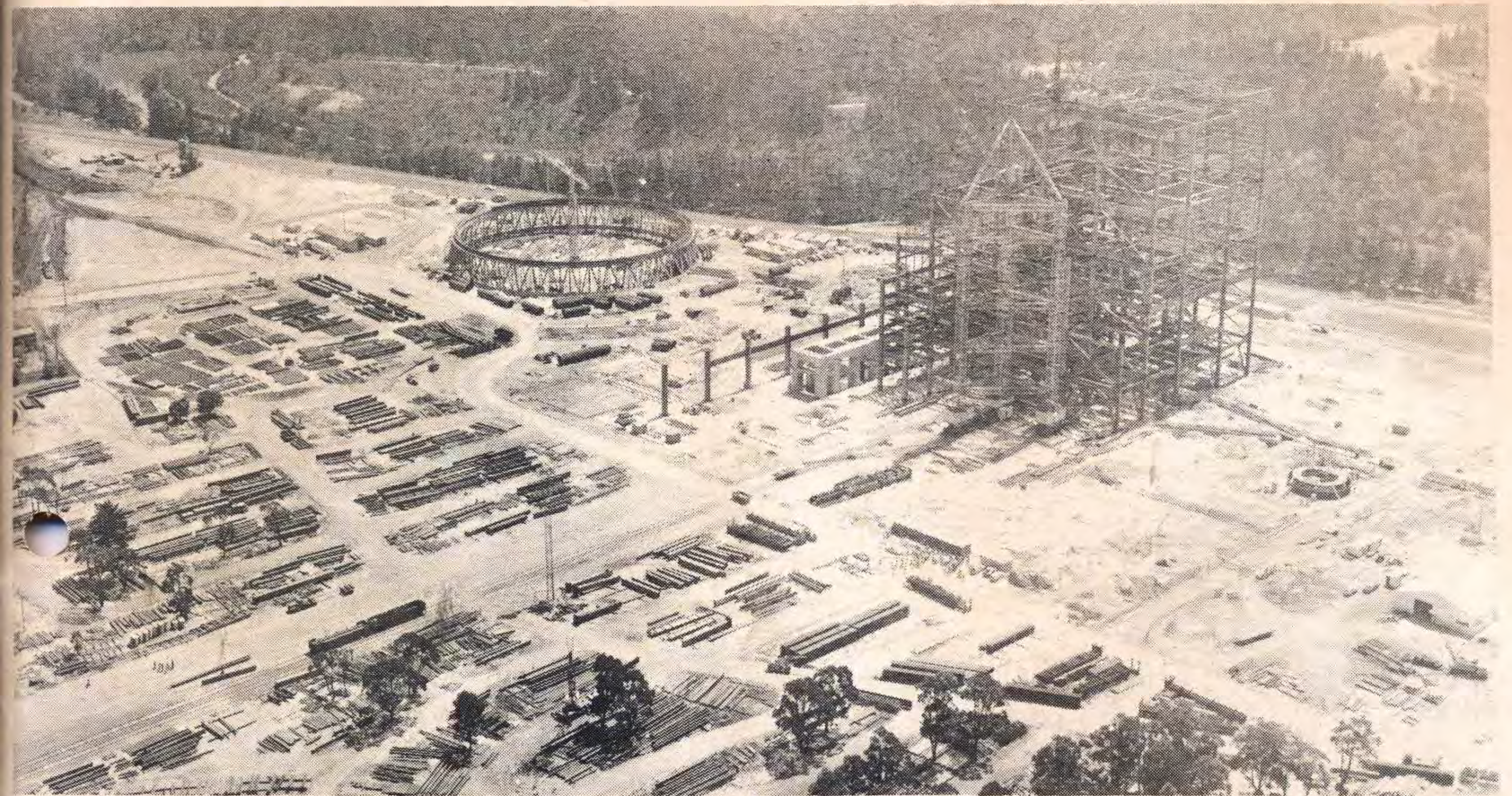


* A model of a coal - winning dredger proves a great attraction.

* This trial of strength machine was one of the many novelties in the Dome of Magic.



THE GROWTH OF YALLOURN "W"



* THIS aerial photograph gives a good idea of the latest progress on the construction of Yallourn "W". Outstanding features in the photograph are the cooling towers to the left of the station and the start of the 550 feet high stack to the right.

Are you interested in LV Future? Cont'd from P.9

The Promotion Officer, Mr. Geoff. Willingham, is actively engaged in seeking out new industrial and commercial prospects and is also involved in assisting existing enterprises with current problems and expansion plans. In the past year, at the Committee's invitation, a number of metropolitan and overseas businessmen, plus representatives of tourist and publicity organisations, have visited the Valley to examine its attractions.

The Committee is seeking ideas on how this development can be brought about. We would welcome constructive ideas even in an incomplete form and will guarantee to investigate and develop them to a stage where a proposition can be put to the State Govern-

ment.

There must be many such ideas in our midst and we would be pleased to hear of them.

Our well-appointed office in Central Arcade, Church Street, Morwell, is open every afternoon from 1.00 p.m. - 4.00 p.m. The telephone number is Morwell 4 1763.

I would personally welcome enquiries at my office in the Regional Headquarters at Morwell, extension 3547.

The Committee has been assured of favourable consideration, of any reasonable proposition, by the State Government. We believe in the future of the Valley and seek your assistance in the important task of promoting and developing this area where we all live.



MUSIC MAN

Mr. George Wright, Fitter at Yallourn Power Station has, like many other Valley personnel, an interesting occupation for his spare time. He teaches the piano and the organ.

Prior to coming to Australia he played the drums and the bagpipes in the Boys' Brigade

Band in Glasgow. He was, for some years, the drummer with a dance band.

Picture shows George with one of his pupils, Jennifer Davis (15), daughter of Mr. Jack Davis, Clerk, Yallourn Power Station Annexe.

carter's column



Usually a photo adorns this page, but this month's an exception, there are two. . . . reason: there will always be the woman's touch when men create something of beauty.

You've passed the spot and I've passed the spot - just another unkempt area of Newborough outskirts - till someone said - 'Let's make a thing of beauty'. And they did.

And this spot of beauty and recreation - our newest - the Newborough Bowling Club's green at the corner of Newborough Road and Coach Road. Pictured in an afternoon social game are some of the men who created this thing of beauty and recreation.

In a comment to this column, said President Stott - "The site lends itself to ultimate development of three rinks of 7 ends each, with a licensed club house and off street parking for about 200 cars. At present the club consists of 61 members and 23 associates."

The Club was formed by finance raised by the Newborough Bowling Co-operative, strongly supported by members and the general public.

Incidentally if you want to join this merry band of bowlers, don't hesitate - you'll be welcome.

* * * *

Nineteen-year-old Margaret Horne is a lass with a "punch", in more ways than one, - occupation: punch card machine operator at Yallourn Main office, and in sport, "punched" one of the few safe hits for Traralgon in the provincial championships at Bendigo during the recent country softball championships. Margaret a "B" grade player with Yallourn, held her own with the top class "A" grade players in the titles. This is Margaret's first year.

* * * *

SPECIAL MEMO FOR THE CHAIRBORNE BRIGADE. - Give Max Madden (SEC 3405) or Kevin Laity (SEC 2326) a ring on the "blower", and get fit. Both can give you a lead to the healthy life. **AS A FOOTBALL UMPIRE.** They need the Bods, and you need the exercise?

* * * *

Names to conjure - Jim Haylock; Graeme Williams; Murray Jackson; Geoff. Foggo; conditioned by football trainer, Barry Brewer; with newly appointed football coach Ron "Knuckles" Lee. These, with others from 125 centres, have a date at the Morwell Football oval - **AND IT'S NOT FOOTBALL** - but probably the next most exciting sport - A Firemen's Demonstration on the 8th, 9th, 10th and 11th of March. By the time the LVFL season opens, believe you me - these blokes are sure going to 'damp' the opportunity of other footy chaps - I like the punch line given in Murray Jackson's screed for this par - "Keep these dates free if you want to see some "reel" top class competition.

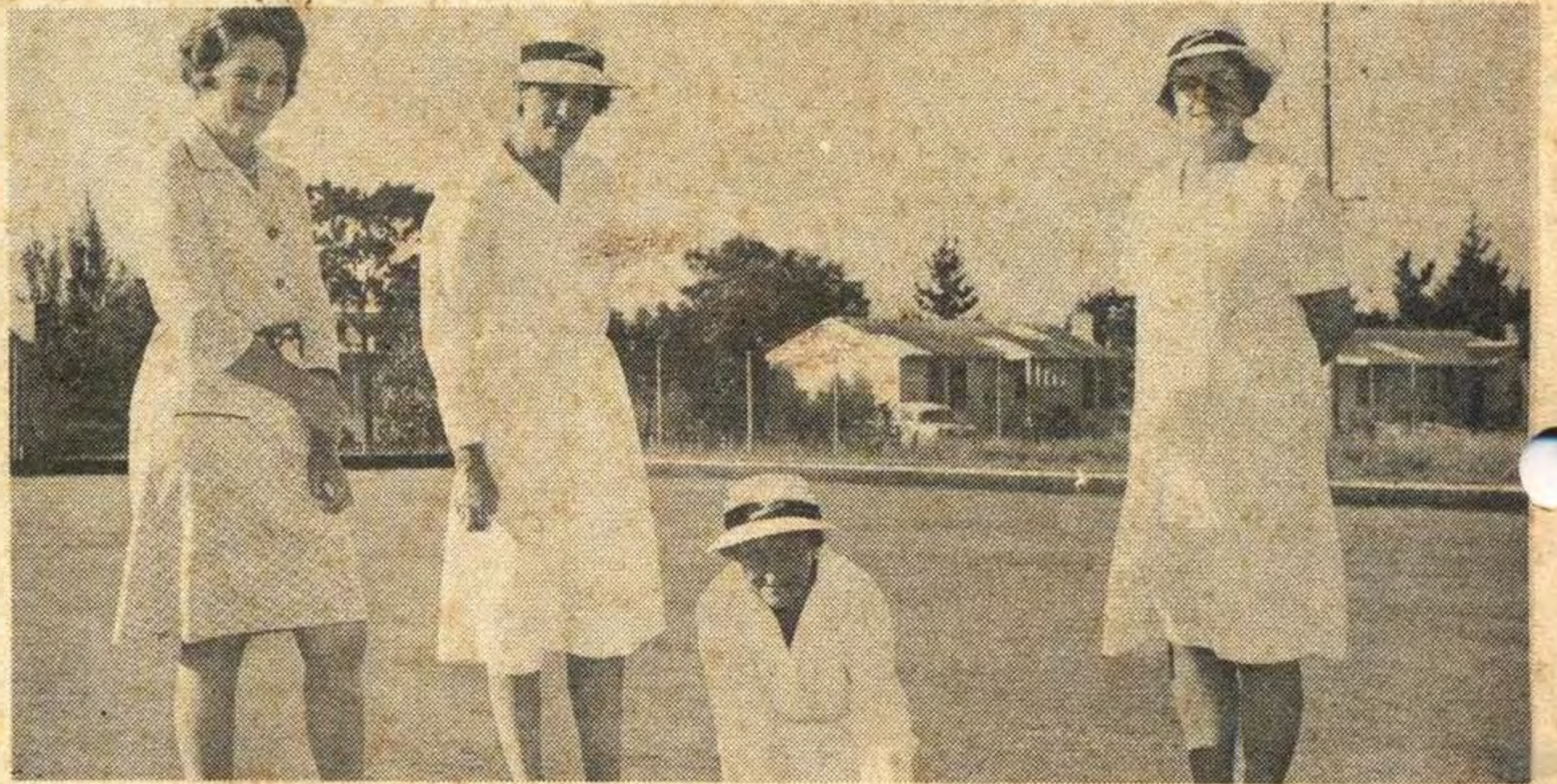
* * * *



* FROM left to right - standing - Arthur Huntley (Yallourn Briquette); senior vice-president; Sam Bremmer (Power Station, Yallourn); Secretary; Fred Stott (Yallourn Briquette), President; John O'Brien (Patrol, Yallourn), Stan. Stephenson (Patrol), Ron Greenham (Patrol), Committee-men. In front - Lyn Steel (Yallourn Power Station Maintenance), Vice

president; and, with the measuring tape Bernie Brown (Coal Supply), Committee-man.

Unable to be present were Messrs Tony Paull (Property Office), Treasurer; P. Reville (Hazelwood); F. Mickl (Municipal); G. Edmunds (Transport Workshops); R. Metcalf (Patrol) all members of the Committee.



* SOME of the Ladies who made the Newborough Bowling Club a reality - that woman's touch I spoke of - from right to left - Mrs. Una Stott Senior (Vice President); Mrs. Pat Hillberg (President) Mrs. Edie Willi (Vice Pres-

ident); Mrs. Pheobe Brown (Committee of the Ladies Committee. They were having a quiet afternoon bowling when our photographer "snapped" them. Thanks Ladies.

.....

Reference par above - football umpires. Don't like Aussie Rules? Here's your chance then - but before they'll let you loose on a soccer match you must pass the "horror test" - 14 laps at Morwell oval, spiced with running backwards, jogging and something about "tests". Boiler House Engineer Herb Wandmaker makes them tough - so chairborne brigade, get off it and see some action. Yes - they need some more soccer refs.

but Reg, have they found that ball yet which scored the sixer? We got the Social League trophy from NSW, the D.J. McColl shield. Be nice gesture if they put it on show during the L.V. Festival as a tribute to "Our Reg".

P.S. About that recreational centre - my chit in favour is in - so are 1000 others. What about yours.

* * * * *
Reg Bacon helped to bring "it" home -

Printed web offset litho by Express Offset Press, Morwell, for the State Electricity Commission, Latrobe Valley Region.