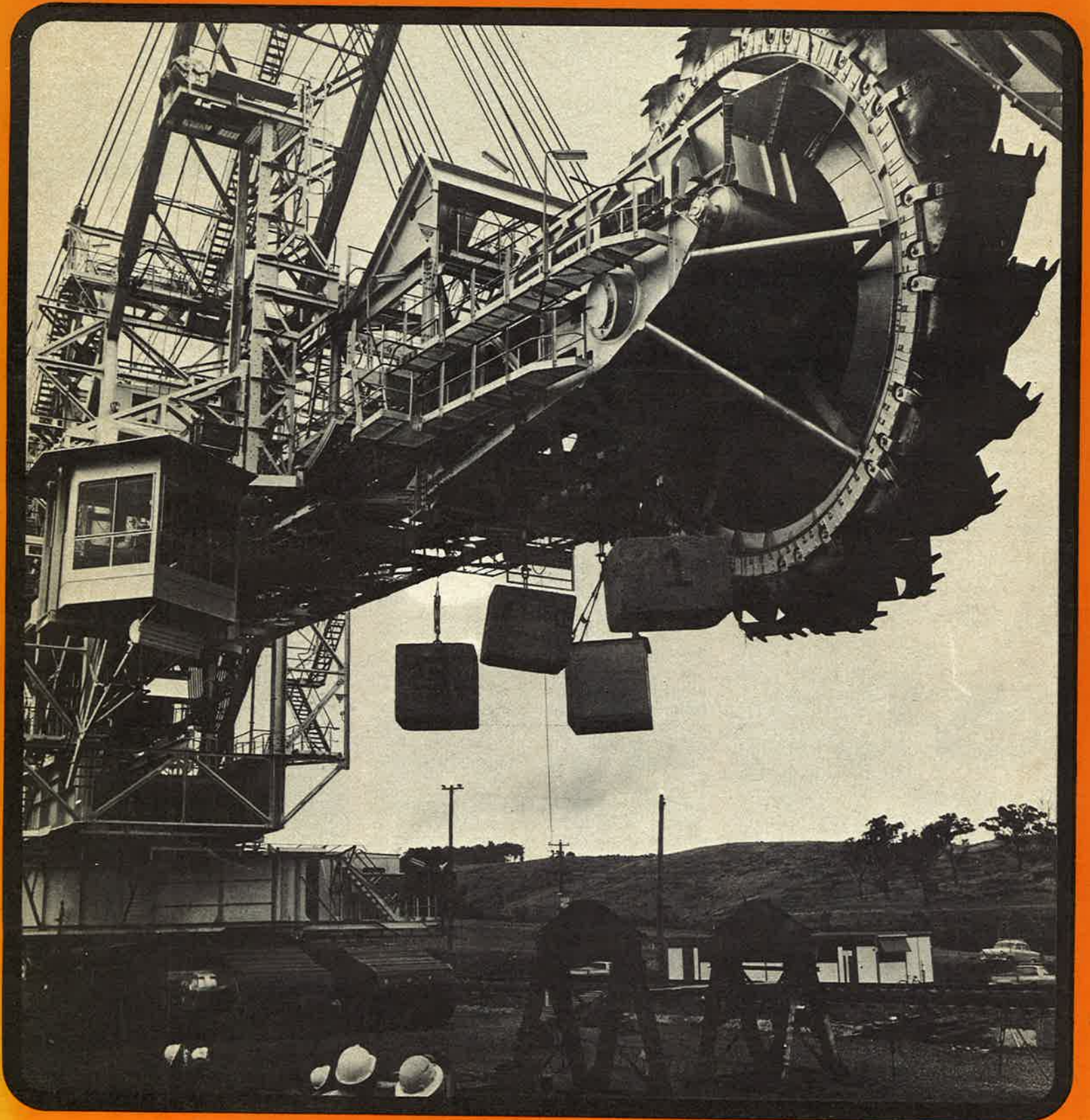


Wimmera Field Days -Pages 7-9

APRIL, 1974

No. 180



IT'S AN ELECTRIC WORLD

From Robert F. Gilkeson, Chairman of the Board, Philadelphia Electric Co., as reported in the Edison Electric Institute Bulletin:

"Our customers are people . . . real people . . . men, women and children. They buy homes, automobiles, food, clothing, furniture, refrigerators, electricity. They consider the location of the home, the model of the automobile, the taste of the food, the fit of the clothing, the style of the furniture, and the quality of the refrigerator. Electricity is out of sight and out of mind. The flicking of a switch is automatic, a reflex action without thought. What else is so handy, so available, so necessary, and so useful that you can command it without thinking about it?"

"Well, let's get people thinking about it. Thinking about it positively. As an asset, as a necessity, as a product that helps us grow, that puts quality in our struggle for daily existence."

★
The Electricity Commission of N.S.W. says their bulk supply system maintained power supplies continuously to all flood affected areas of N.S.W. during the recent flood crisis. They said that although their Commission-built substations and transmission lines are designed with consideration for flood levels over the past 100 years, the water came close to exceeding the highest anticipated levels.

★
A floating electric power generating station of 4 000 tons displacement was recently towed 5 500 nautical miles from the United States to the port of Salvador in Brazil. The 121MW power installation consists of six gas-turbine electric generators mounted on a specially designed barge named Electron.

★
Tumut 3, the last of the Snowy Mountains Authority's hydro stations, will reach its full planned capacity of 1 500MW later this year with the completion of the last 250MW water-driven turbine.



Chimney to disappear from skyline

The higher they build 'em, the further they have to fall — and one of Yallourn's oldest landmarks — the 100 metre chimney stack at the Yallourn Briquetting Works, will soon fall under the wreckers' hammers.

But the famous chimney will be one of the last things to go in the demolition of the Yallourn briquetting works.

Work on demolition of the factories has just commenced, and is expected to be completed by mid-1975.

The chimney will disappear from the skyline either late this year or early 1975.

The contract to demolish the stack and briquetting works has been let to Whelan the Wrecker.

The Yallourn works closed in 1971, and all briquetting is now centred on the Morwell factories, which began operation in 1960. Production at Morwell has reached 1.5 million tonnes annually.

The Yallourn briquetting industry dates back to the earliest days of the SEC.

Although some briquettes were made from Latrobe Valley coal as early as 1894, the briquetting industry in Victoria really dates from the start of production at Yallourn in November, 1924, with the establishment of "A" factory.

Construction of "B" factory followed in 1931, and "C" factory was completed in 1944.

The old "A" factory ceased operations in December, 1968, and the works finally closed down at the end of 1971.

In its heyday, Yallourn produced more than 600 000 tonnes of briquettes annually. Total production during its 47 years of service was 20 million tonnes, using almost 80 million tonnes of raw brown coal — 30 million tonnes of it in the factory's furnace.

The 80 million tonnes of coal represents almost a quarter of the total coal production from the Yallourn open cut.

In addition to its briquette output, the associated power station generated 21.5MW of electricity.

This output, fed into the State supply network through the Yallourn switchyard, played a useful part in meeting the State's immediate post-war needs.

Above:

The Yallourn briquette factory and chimney, soon to go under the wreckers' hammers.

SEC news

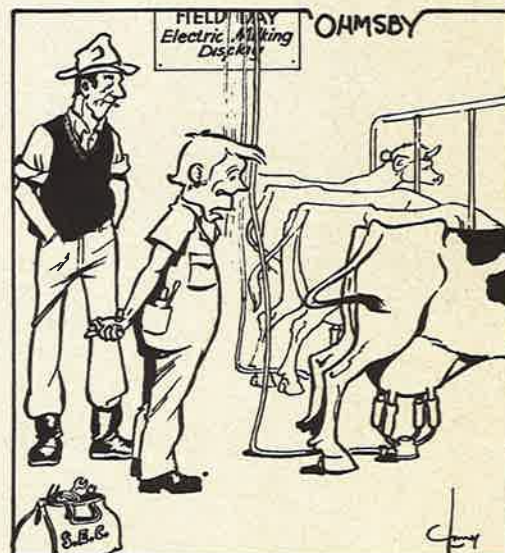
OUR COVER

As this issue goes to press Dredger No. 12 is almost ready to start winning brown coal at the Yallourn Open Cut. Assembly and behind the scenes preparation work for the commissioning of the huge machine has been underway for more than 18 months. Recently, instrumentation prepared by Engineering Systems Section, Scientific Division played a vital part in the rigid safety tests the giant had to pass. (See page 10.)

Published monthly by the
State Electricity Commission of Victoria
Public Relations Dept.
15 William Street, Melbourne

Editor . . . BILL MACRAE 2975

Asst. Editor . . . RON COLEMAN 2974



"Yeah, mate — O.K., you're all-electric, but the 22kV lines can't take it to the dairy."

MONASH MOVE IS UNDER WAY

The occupation of Stage 2 of Monash House is now under way, with two floors now occupied.

Distribution Engineering Department have moved to the 11th floor, and this Department now occupies the entire floor of Stage 1 and Stage 2.

On Monday, April 1, Electrical Inspection Department moved to the tenth floor of Monash House, but the Testing Laboratory will remain in the Services Building in Filinders Street, adjacent to Monash House.

Over the past six months, the program for the erection and rearrangement of partitions in Monash House has been seriously delayed because of shortages in partition components.

However, the difficulties in obtaining pineboard and vinyl cloth for partitions has now been overcome, and we are assured of the necessary stocks for this work to continue.

It is expected that the contractor will be handing over two completed floors every five or six weeks.

An occupation program has been planned until the end of August, and dates beyond August are currently being re-programmed as a result of the new dates for the delivery of materials.

Next moves will be Personnel to the 13th floor in mid-May, Management Services and Internal Audit to the 14th floor towards the end of May, Supplies & General Services to the 6th floor in early June, Distribution Services and Personnel to the 12th floor in late June, Civil & Architectural to the 4th and 5th floors in late July, Finance and the Government Auditor to the 3rd floor in mid-August, and Sales to the 7th floor in late August.

The move will be unique in Melbourne, as it involves not only a horizontal move, but also, in many cases, a vertical one, or a combination of both.

Because of the size and inter-relationship of many departments, a lot of rearrangement has been planned to accommodate the present Monash



Distribution Engineering Department are on the 11th floor of Monash House, and settling into Stage 2 are seen Scientific Officer, Keith Herd, and Typist/Clerical Asst., Bernadette Carroll.

House departments and incoming departments with the least disruption.

When occupation is completed, Monash House will be the largest single-occupancy office building in Melbourne, with 2 800 people from the one organization under the one roof.

With the exception of the partitioning work and computer areas on the ground floor, the building is now virtually complete.

When completed, personnel who have worked for some years in Monash House will notice many changes.

A new computer installation will be situated on the ground floor, to be occupied by Computer Services Department.

The ground floor foyer will be enlarged, and the mosaic mural once again will be on full display. A special display area will be a feature of the extended foyer, with displays of special interest to be changed regularly.

Color will play an important part in the building, with partitions facing the service core, and tiles in the separation area, being in different colors.

The partitions will be of orange, blue and green, with one color on each floor, alternating between floors. Floor tiles in the lift lobby will be gold in color and tiles in the new section will be beige.

On the north side of the building, windows have inbuilt venetians to control the sunlight.

The observation deck will be enlarged, and have improved ventilation.

First Aid facilities on the ground floor will be enlarged, in proportion with the additional people housed in the building.

The escalator service — the first of its kind in an office building in Melbourne when installed in 1966 — has been extended to the eighth floor.

There will be a bank of six lifts at the front of the building, three at the back, and a service lift to the luncheon room kitchen. During peak periods, lifts will stop at the Basement, Lower Ground and Ground Floors, then run non-stop to the ninth floor, with the escalators providing a quick service for floors from the ground to 8th floor.

A complex of conference rooms of various sizes will be incorporated on the Lower Ground floor, to augment the existing conference facilities.

There will be considerable alterations to the 18th floor, to bring it in line with Management areas of similar large organizations.

The luncheon room facilities will be enlarged, and meal service arrangements will be streamlined to include such facilities as a grill counter. This should be completed by early 1975.

Outside, the facade is virtually complete, and it is practically impossible to detect where Stage 1 ends and Stage 2 begins.

news briefs

The State Government has given the go-ahead for the building of a \$15 million hydro-electric power station at Dartmouth Dam in north-eastern Victoria. Legislation was proclaimed on Wednesday, March 27 authorising the SEC to construct a 150 MW plant at the dam, which is being built on the Mitta Mitta River by the State Rivers and Water Supply Commission for the River Murray Commission.

Site works for the station are due to begin in 1976 and it should be ready for operation in 1979.

The power station will be Victoria's largest single hydro plant. It will be built at the base of the massive main dam and be operated by the release of irrigation water from the reservoir.

It will have a single generator of 150 MW capacity controlled remotely from Mount Beauty, about 25 miles away. Normally the station will not be manned.

Tenders for the main generating plant will close this month. An order for this plant will be placed late this year.

The project will also involve the construction of a regulating dam downstream from the power station. Work on this is due to begin in 1977.

*

In last month's issue of "SEC News", the Who's Who feature told how the Internal Audit Department helped Commission employees throughout the State as part of their daily duties.

Deputy General Manager, Charles Trethowan, highlighted a different aspect of the work of an auditor when he spoke at the Australian Society of Accountants' National Convention in Canberra last month.

His topic was "Operational Audits — Their Place in an Ordered Organization".

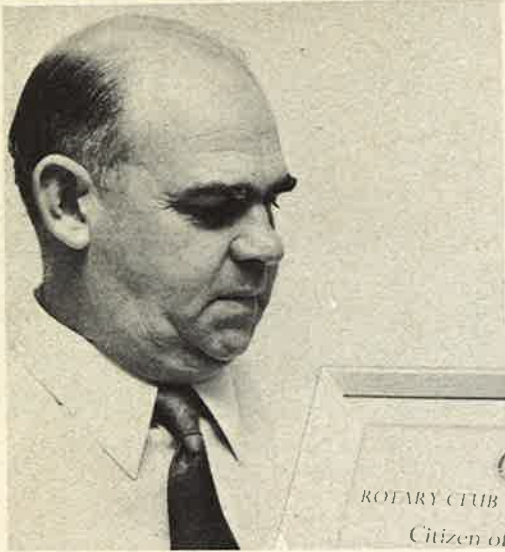
Mr. Trethowan defined operational auditing as that part of the auditor's task that takes him away from accounting records and financial statements into the broader areas of an organization's operations.

He said that he regarded the internal audit function as a key factor in the management control process.

"It is conceivable that an internal auditor, in the course of his work, will judge that a management policy is not sound, or that it has outlived its usefulness, or changed conditions have outmoded it. Whatever the reason, the internal auditor should be prepared to put the case for review", Mr. Trethowan said.



around the Commission



Rotary recognised community work

If there's anyone in Alexandra who doesn't know Peter Dent, then they can't have been there very long.

Peter is our Resident Linesman, and has been there for the past 20 years.

He has just been awarded the local Rotary Club's Citizen of the Year award for his services, not only with the SEC, but also in a wide field of community activity . . . and he is not a member of Rotary.

Peter's community work includes first aid, ambulance assistance and civil defence work. In fact, he is Controller of Civil Defence for the Shire of Alexandra.

His first aid and ambulance work is involved with the Ambulance Volunteer Crew, of which he is Training Officer.

He conducts First Aid classes each year, which regularly attract over 50 members.

In between the time taken up with being Resident Linesman, and his duties bandaging and rescuing, Peter also found time last month to be a guest at a Government House tea party.



Mildura bandmen, from left, John Holmes, Graham Leutner and Andy Steedman.

A happy Band

They're a happy band at Mildura, especially Metering Officer, Andy Steedman, Special Meter Reader, John Holmes, and L/H Linesman, Graham Leutner.

The three are members of the Mildura District Band, and between them have totalled 93 years with the band.

Andy and John have both been awarded the Order of Merit by the Victorian Band League to mark over 30 years' dedicated service to banding in Victoria.

Andy joined the band in 1931, and has played cornet, percussion and euphonium. Appointed Bandmaster in 1953, he held the position until 1966. He has held every executive position in the band, and at present is President, a Life Member, and still playing the euphonium.

Andrew was conductor when the band won two Australian championships, and on each occasion, five SEC men were band members.

John Holmes has been playing trumpet with the band for 33 years, and is a life member. He is also Musical Director, arranger and trumpeter for his 20 piece showband, The Mildura All Stars, and plays piano in his own small dance band.

The "baby" of the group is Graham Leutner, who has been with the Mildura District Band for a mere 15 years.

Short-lived robbery

The effects of a break-in at Broadmeadows Area Centre last month were minimized by the keen observation and action of an SEC employee.

The gate lock was smashed and the depot broken into on the night of Thursday, March 7, and an SEC panel van stolen.

Friday morning, employees at the Area Centre were keeping their eyes open for any trace of the missing vehicle.

Installations Inspector, Ron Linton, was out on the job when he spotted the van parked in the roadway at Dallas, about two miles from the Area Centre. The tools and ladders had been removed.

These were soon recovered, having been spotted in a paddock some miles away, and reported.

Singapore consolation

Glenda Robertson nearly made it to New Zealand recently, but now will be going to Singapore instead.

Glenda, a typist in Colac, is Secretary of the Western Area of Victorian Young Farmers. She was selected as one of six girls to compete for the ANZ Victorian Young Farmers Award, the prize being a 3-months tour of New Zealand.

Although not successful, Glenda had a great time, and will still get a trip overseas — when, with other members of Victorian Young Farmers, she will be going to Singapore for several weeks.

Electric vehicle market talks

Plans to increase the Australian market for electric vehicles were outlined to the Melbourne branch of the Australian Electric Vehicle Association at its inaugural meeting at Monash House this month.

The meeting was attended by more than 100 people representing a wide range of organizations and companies interested in the development, manufacture or use of electric vehicles or their components.

The SEC's Assistant General Manager (Marketing and Distribution), Bob Chapman, is the Association's first national President.

Mr. J. R. Allan, the Melbourne branch Chairman, told the meeting that electric vehicles would soon be indispensable and commonplace.

"I'm sure that over the years they will become an intimate part of the daily life of every industrialized country," he said.

4/sec news

"They will be imported in increasing numbers, and they will also be designed, made, marketed and serviced in Australia."

But Mr. Allan warned that the industry must not be allowed to grow haphazardly without proper standards. This had led to the downfall of many other promising technical developments.

Mr. D. R. Whitford, of the School of Physical Sciences, Flinders University, South Australia, gave details of an electric vehicle project being developed at the university.

He said that its design differed radically from conventional electric vehicles and it showed considerable promise. The first prototype would be road tested within a few months.

Later, Mr. Chapman addressed members of the branch on the energy crisis and possible alternative energy sources in the future.

He forecast that there would be greater use of electricity for transport in Victoria over the next 20 years as oil became scarcer and more expensive.

DGM, Charles Trethowan (left) watches AGM (M&D), Bob Chapman, try out an Electrodrive electric bike. With them is Mr. Charles Dean, Managing Director of the company which is manufacturing the electric bike.



Suggestion scheme turns 21

On April 10, Chairman, Bob White chaired a promotion of the Suggestion Awards Scheme for the Productivity Promotion Council of Australia.

There were representatives of almost 90 firms at the promotion, which was held to encourage increased participation in the suggestion awards scheme.

Since the Council started the awards three years ago, the SEC has been represented by finalists each year, and last year Tom Adams from the Latrobe Valley took off the top award, with John Hoggard from Hazelwood gaining a merit award.

But long before the Council started its annual awards, the SEC was actively involved in its own suggestions scheme.

Our scheme began in 1953, making it 21 years old this year.

And in that time, the suggestions awards have certainly come of age.

In the space of 21 years more than 24 000 suggestions have been received, with 6400 of

these being accepted — an acceptance rate of 26 per cent.

Awards made have totalled \$110,000, with the SEC having saved \$1.75 million from tangible suggestions.

Some of the suggestions have been "onciers" — from people who have been confronted with a situation and devised a way to improve it. Others have come from regular contributors, many of these in job situations where a keen eye and mind can find practical improvements in many everyday situations.

Some of the awards have proved a goldmine for the suggestor — and meant great savings to the SEC.

The highest payment was of \$3000, made in 1969 to Norman Edwards of Mid-Western Branch. And the suggestion? Replacing timber guy warning blocks with white polythene tubing — at an annual saving to the SEC of \$15 000.

In 1971, an Overseer and two Foremen Boilermakers from Hazelwood power station

shared an award of \$2850 for their suggestion of modifications to sloping wall liners of main pulverising mill classifiers.

Peter Charleston's awards have been much smaller, but they have been regular. Peter, from the Latrobe Valley, is a consistent recipient of award payments.

Latrobe Valley awards are now handled locally by a decentralized suggestions panel. This change took place in 1971, when the whole scheme was streamlined.

The anonymity provision was removed, to encourage suggestors to discuss and develop suggestions with the supervisors.

Payments for ideas accepted increased to 50 per cent of the net annual saving, from a previous level of 25 per cent. Payments are also made for suggestions which are worthwhile, even if there is no tangible monetary saving involved.

Twenty-one years ago the scheme started slowly, before it began to snowball. Today it is helping to promote better working conditions for all SEC employees, as a result of their own enthusiasm.

And still the awards keep coming. On page six of this issue, the most recent award is featured.

WHO'S WHO

Did you know that during the early 1950s the SEC was Australia's largest importer? Or that you could almost pay for the Stage One boiler plant at Yallourn W with the \$40 million the SEC has saved on import duties during the past 20 years?

And were you aware that in the past the SEC has exported: a briquette factory to India, briquettes to Ireland and Japan and an insulator washing gun to

Israel via the United Kingdom due to the Suez Canal embargo during the Middle East War?

In addition our imports have included everything from a complete briquette factory to a consignment of toilet rolls (when paper was in short supply).

None of these transactions and countless others could have transpired without the expertise of the SEC's customs agents — the men in Shipping and Customs Division, Supplies and General Services Department.

Headed by Shipping and Customs Officer, Jim Patterson, the seven-man division, originally Shipping and Customs Branch, was formed in 1949 under the Chief Accountant and was transferred to Supplies and General Services Department when that department was formed in 1956.

It was formed with a view to maintaining greater control and efficiency in handling the importation of a large quantity of plant and materials. During the

busy 1950s the division strength soon rose to 25. The work was interesting and attracted several inquiries from juniors wanting to work in the Division.

Today, with the State grid completed and the increasing ability of local industry to meet our needs, importation has dropped and with it, the strength of the division. And although customs work is the more important aspect of the division's role, divisional responsibilities are evenly divided by customs and shipping.

On the customs side the division's officers have saved the SEC millions of dollars in remissions of duty on imports. Normally any goods imported from overseas are subject to tariffs in order that local industry is protected. Under Customs By-Law these tariffs are waived if it can be proved that the goods are not reasonably available from Australian sources.

The onus of the proof lies with the applicant and consequently officers from Shipping and Customs visit Canberra regularly. Apart from this aspect of customs work the division carries out all the normal tasks of a customs agent.

The Shipping section is responsible for the movement of goods by road, rail, air and sea. In accordance with government direction, SEC policy is to use railway facilities to meet our cartage requirements wherever possible.

Road transport requirements are met by calling on the SEC's heavy transport fleet and private carriers. The shipping of goods by sea from Europe and the United Kingdom involves liaison between the Agent-General for Victoria, London and the division.

Because of the high cost involved, SEC use of air transport is normally restricted to small items which are urgently required. However, it has been necessary on two occasions to charter jet aircraft for the movement of large consignments of equipment for use in emergency situations.

From left: Shipping and Customs Officer Jim Patterson, his Assistant John Ellis and Shipping Section head, Albert MacPherson inspect a consignment of steel from BHP, Port Kembla at South Wharf.



between ourselves

Gone, but not forgotten. Former employee, who has been working in foreign climes for two years, received a nice cheque from the SEC, but no explanation. He was thankful, but puzzled, until your Newshound managed to find the explanation. It was payment for an allowance which came in last year and covered some of the time he was still with the SEC. Incidentally, an explanatory note had been forwarded, but the cheque arrived first.

*

The place is full of comedians. Especially those who rang your Newshound after it was announced that I was taking over the column. Most of their conversations started with: "I always thought you were a bit of a dog . . ." But as those calls, and also the letters, help to fill the column more easily, guess who's having the last bark?

*

Speaking of Bach. Scientific Division's Geoff Grinton works with a new mini-computer, and as part of learning to "live with the beast", has programmed it to play Bach, which he occasionally lets it do during lunch breaks. He had formerly programmed it to play the National Anthem, but his workmates became tired of standing up.

*

Our friends in Colac are up with the times. Their local newsletter — "Sou-West Gad-About", has just been renamed "Sou-West Streak-About". However, their centre pages were blank, except for an appeal for more contributions to help fill the pages. A case of no nudes is bad nudes?

*

From the mailbag — a couple of envelopes, maybe addressed in haste. One to the ARTICHETURE section, and the other — eventually delivered to Finance, addressed to the FIANCE Department.

*

Who said the Mid-West is behind the times? Just because one morning tea break one of their chaps started reading out some strange-sounding news items from the local paper. The way I hear it he was past the funnies and into the sport before realizing his copy of the paper was exactly a month old to the day.

NEWSHOUND



Safety in Construction



Chief Civil Engineer, Ralph Urie knew when he presented this flag that it was going into safe hands. It was a National Safety Council pennant to mark the achievement of 100 000 manhours of safe working achieved by the Joiner Shop and Lyle House group of Construction Division (Civil), C&A Dept. The presentation was made at the Footscray classroom last month.

New Metro ESB organisation



MR. LIDDELOW



MR. TREVASKIS



MR. MATHERS



MR. WESTGARTH

As from April 2, changes in the organization of Metro. Branch became effective.

Mr. Jack Liddelow has been appointed Deputy Manager, Metropolitan Electricity Supply Branch.

The present Distribution Division has been divided into three new divisions, as follows:

Developmental Division, headed by Mr. Des Trevaskis, who will retain his present title of Developmental Engineer.

Suburban Distribution Division, headed by Mr. Jim Mathers, who will retain his present title of Senior Area Engineer.

Burnley Distribution Division, headed by Mr. Harold Westgarth, who will retain his present title of Services Engineer.

The present Commercial Division has been divided into two new divisions — **Customer Relations Division** under the control of a Manager, Customer Relations, and **Administrative Services Division**, under the control of a Manager, Administrative Services.

The positions of Distribution Engineer, Commercial Manager and Assistant Commercial Manager will lapse.

Money for suggestions

Suggestion awards aren't always the result of sudden ideas — sometimes a lot of trial and error is necessary before the ideal suggestion is arrived at.

Recent awards to Max Scott and John Bickham, from Mid-Western Branch are a case in point.

Their accepted suggestion — a tool for fitting pre-formed armour rods to live overhead lines, earned John \$50, and John and Max a further shared award of \$50.

Four separate suggestions were submitted in the search for the ideal tool, one from Wimmera, and three from Mid-Western.

The final development from Mid-Western was tested at the Chadstone Distribution Training Centre, evaluated and modified slightly.

It will now be produced and put into service, after SEC people have been trained in its correct use.

Acting Mid-Western Branch Manager, Neville Morriss (right) presents suggestion award cheques to Max Scott and John Wickham.





switched -on farmers

The SEC is ploughing its way closer to the farmer. And in great furrows is reaping a king harvest of customer satisfaction in rural Wimmera Branch.

In fact, it's hard to believe that the first seed was sown only 12 years ago, when officers at the branch headquarters in Horsham broke the earth by involving the SEC in the maiden Wimmera Machinery Field Days.

That seed quickly germinated and bore fruit. The SEC is now looked to annually for its support in the big three-day event and the SEC Pavilion at Longerenong Agricultural College, near Horsham, has become almost the landmark that Flinders Street Station is in the city.

Each year, the field days — which are among the biggest of their kind in the southern hemisphere — attract more visitors. And this year was no exception.

Farmers and graziers arrived by car, plane and rail transport, from neighboring towns, interstate and overseas, in plague proportions reminiscent of the squadrons of locusts which had attacked motoring patrons on the nearby Western Highway.

At one time there were 21 light aircraft on the strip close to the field days site and organizers estimated the three-day crowd at 30 000.

For this reason SEC personnel were out in force, keen to take advantage of the opportunity to meet so many of their customers face to face and promote the use of electricity on the farm.

Continued next page



switched - on farmers

Continued from previous page

A small task force spearheaded by Branch Electricity Sales Engineer, Vic Greer — the SEC's representative on the field days committee — was on hand to talk to customers.

District Managers and their Assistants each spent a day in the SEC Pavilion answering all kinds of enquiries about electrical appliances. Expert advice and technical information on the use of electricity on the farm was supplied by Graeme Kitney and Alan Flowers of Rural Section, Sales Department.

Branch Manager, Tom Wiseman was seen at the site on more than one occasion talking to the many farmers and customers he has befriended in the area. Tom was born in the Wimmera and returned to the area as Branch Manager following a term as Distribution Engineer in Northern and Midland Branch. Prior to that, he was Distribution Engineer in the Wimmera.

In another section of the college, Home Service Advisers Barbara Russell and Val Carter gave cooking and freezing demonstrations twice a day for the wives of the farmers and machinery representatives.

Branch Sales Officer, Jack Handby was in charge of this side of the proceedings and he showed the film "Frozen Summer" in conjunction with the freezing demonstrations.

Activities at the SEC Pavilion were co-ordinated by Customer Services Engineer for the branch, Brian Shaw. This left Vic Greer free to carry out the field liaison work required of the 30 members on the field days committee.

Vic told SEC News the field days at Longerenong gave the SEC an ideal opportunity to "sell" electricity and its advantages to the man on the land.

"When the SEC came to the Wimmera, the area was just a host of small undertakings and many farmers were loath to connect to mains power. Some of them had their own generators and they couldn't see the advantages in changing."

So when the branch was asked to participate in the field days 12 years ago, branch personnel were quick to seize the opportunity of getting closer to the farmers.

The field days bring the man on the land on common ground with machinery manufacturers and sales representatives, agricultural societies and government agronomists and farm consultants. They also offer the farmer the unique opportunity of seeing a variety of agricultural machinery at one time.

One feature at this year's field days was the world's largest combine measuring 15.24 metres (50 ft.) in length.

Because Wimmera Branch has very little industry and commerce to cater for, the field days are probably the most important event of the year. And you'd only have to visit Horsham during the annual event to realize this.

Motels are booked out and a trots night is laid on as an extra attraction for visitors. This year the week climaxed with a \$10 000 fishing contest on the Wimmera River, organized by Horsham Apex Club.

And one thing's for certain. At one time or another, all, or most of the visitors spent some time in the SEC Pavilion at Longerenong, even if only to rest their weary legs on the seats placed in the building for their convenience.

Over the years, the pavilion has become a focal point at the field days and many a farmer has been heard to say: "I'll meet you back at the SEC Pavilion".

Top: (from left) A panoramic view of a section of the static display site at the field days.

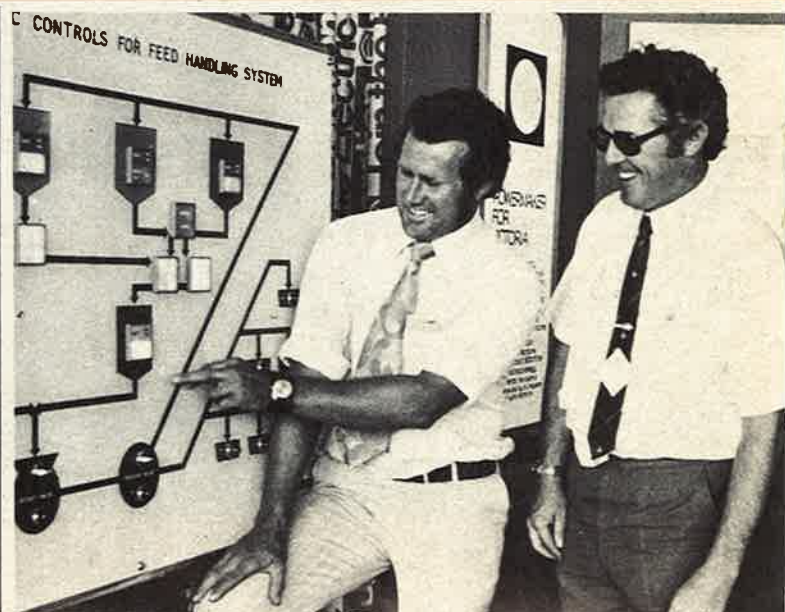
Home Service Advisers Val Carter (left) and Barbara Russell gave cooking and freezing demonstrations for the farmers' wives.

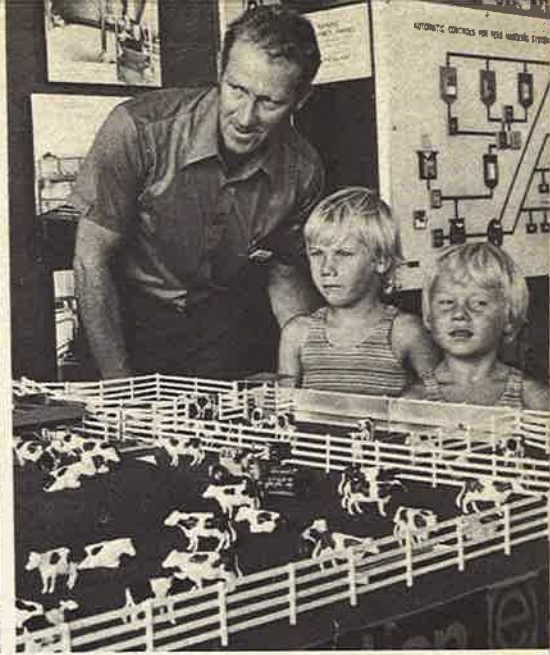
Rural Section's Graeme Kitney talked cattle with young farmers Wayne Murray 6 (left) and his brother Simon 4, of Horsham.

Below: (from left) Learning the finer points of an electric feed handling system were Barry Walker (ADM Horsham), Neville Robinson (DM Nhill), Roy Barnard (Display, Sales Department) and Peter Abbey (DM, Edenhope).

Broiler breeder hens at the nearby Mount Arapiles Research farm.

Birds of a different variety, telephonist Robyn Matheson (left) and typist Wendy McIntyre of Wimmera Branch office, Horsham, added that touch of glamour to the field days.





When SEC News called in, the building was packed to capacity as young children milled around rural displays set up by Roy Barnard of Display Division, elderly folk rested on the seats in the shady haven and customers chatted with district office personnel.

And while all this activity was taking place on the grounds at Longerenong College, Dooen, there was a similar commotion on a farm at nearby Tooan as electricity helped 24 000 hens lay eggs. The hens — all broiler breeders — lay up to 8000 eggs a day on the Mount Arapiles Research Farm owned by Noske Flour Mills Pty. Ltd. The farm produces fertile eggs for a hatchery in Melbourne. It could not run without electricity. Egg production is kept to a maximum by lighting which switches on in the pens at 3.00 am. Feeding 24 000 laying hens and 1000 roosters is no easy task unless you happen to have an automatic feeder. The six pens are so long that even the circular electric feed chain takes one hour to do the circuit of each, in which time 90 kg to 136 kg of feed is delivered. On hot days an electric "fogging" system keeps the fowls cool, using water pumped electrically from a bore on the property. Once the eggs have been collected (by hand) they are ready for sorting on an electric grader before being transported to the city. From fertile eggs and chickens back to the Wimmera Field Machinery Field Days where staff in the SEC Pavilion were inundated with inquiries about heat banks. The inquiries indicated that SEC participation in the field days helps other branches besides Wimmera. One District Manager told SEC News he had received six enquiries about heat banks and only one of the customers actually lived in the branch. SEC involvement in the Wimmera Field Days — as throughout the State — is a team effort — for a big team — the SEC.



Correct weight for No.12

A big baby was weighed at Yallourn recently.

Dredger No. 12 still in its infancy but already as tall as Lyle House was undergoing the safety tests necessary before commissioning.

Using instrumentation assembled by Engineering Systems Section, Scientific Division, the commissioning engineer for the contractors, Buckau R. Wolf, Mr. Siegfried Kicsch weighed the 1050 tonnes rotating super structure 108 times (the total weight of the dredger is 1600 tonnes).

He had to satisfy fellow German, Mr. Lothar Friedemann (an independent expert engaged by the SEC) that the dredger had a safe centre of gravity.

Fuel Department's Rudi Forster was the SEC officer responsible for co-ordination of the tests. He was backed up by Engineering Systems Section's Harry Better who was in charge of the instrumentation used.

Oversight of the erection of the dredger from the SEC's viewpoint was carried out mechanically by Mr. Ron McPherson, Coal Division, Latrobe Valley and his staff and electrically by the Electrical Services Engineer's Section, in the Latrobe Valley.

The big weigh-in took two days and the equipment used by the men from the Herman Central Scientific Laboratory at Richmond caused the consultant, Mr. Friedemann to comment: "You are using some of the most sophisticated equipment in the world".

On-line use of a mini-computer for fast calculations was believed to be a "first" in such a project and the accuracy of the equipment used kept the margin of error to within half per cent.

Six strain gauge load cells mounted on electrically-operated hydraulic jacks of up to 300 tonnes capacity were used to test the dredger 18 times in each of six positions.

The six basic positions were created by having the dredger boom raised, lowered and kept horizontal with and without calibration weights totalling 20 tonnes.

During the tests the dredger super structure

was raised to between 20 and 25 millimetres. Electric leads linked the strain gauge load cells to a mini-computer in Engineering System Section's mobile laboratory van nearby. The computer, bought by Scientific Division only recently for advanced data acquisition studies, has a memory of 8000 words.

It took only 30 to 40 seconds from the time of each lift to complete each calculation. Actual printing of each test report took an additional 50 seconds. Each report listed details of loads, moments, and centre of gravity.

Previously, during a trial run on Dredger No. 11, calculations were done manually and the retrieval of information took a number of days rather than minutes. Results from the computer were virtually instantaneous and enabled the consultant to make his assessments with speed.

Equipment used for the tests was all designed and built at the Central Scientific Laboratory, including a 500-tonnes capacity calibrating machine used for calibrating each load cell before and after the tests.

Programs for the mini-computer were also written at the laboratory.

Talking to SEC News, Systems Research Engineer Harry Better who supervised the tests for the SEC said the complexity of the whole acceptance test was very great.

"Fuel Department still have several tests to carry out before the dredger can be put to work," he said. "They are very thorough and take their job very seriously."

And no wonder.

Dredger No. 12 will earn the \$4 million it is costing the SEC by winning 2000 tonnes of coal an hour, greatly increasing the coal winning capacity necessary to meet the fuel requirements of Yallourn W power station.

When it starts work this month it will be driven by electric motors totalling 2500 hp with power supplied by a 6600 v trailing cable.

At full output it will require 880 kW of electricity — equal to the demand of about 3000 people.

Below: This picture shows how the dredger super structure was lifted and weighed with the use of strain gauge load cells placed on electrically-operated hydraulic jacks of up to 300 tonnes capacity. Electric leads linked the load cells to a mini computer in Engineering Systems Section's mobile laboratory van (below right) manned by Scientist Geoff Grinton who wrote the program for the computer.



people & places



Top: It was fun for all at the Monash House Social Club picnic at Bacchus Marsh. A special steam train took hundreds of SEC people and their families on the return trip, and games and refreshments were turned on at Bacchus Marsh. A picture shows a contestant proving her skill in rolling-pin hurling.



Centre: Mid-Western Branch people take a break during the recent sales sonics course at Ballarat. From left are, back row: Rod McDonald (Field Sales Officer), John Wiltshire (Storekeeper), Charlie Eltringham (Special Reader), Ray Grundell (Billing Clerk); front row, Frank Cahill (Branch Accountant), Alan Kerr (Dist. Clerk, Ararat), John Murray (Appliance Sales Officer), Colin Rees (Asst. Area Supply Officer), Keith Freeman (Operations Engineer), John Clowes (Snr. Clerk, Bacchus Marsh) and Ken Slingo (Branch Surveyor).

Below left: On the job at Stawell are, from left, Steve Arnott, Wayne Cameron and Harry Colyer of the Horsham Construction gang.

Below right: Wodonga Storeman, Arthur Riddington (right), signs out equipment to Linesmen, from left, Sam Bogle, Ken Webster and Trevor Carkeek.



retirements



DON ALLAN

After 46 years with the SEC, Don Allan retired as Foreman at Yarraville Laboratories, Tests Division, Transmission Dept., on April 6. Don will spend his retirement gardening, tending to jobs around the home and taking trips around Victoria and interstate. Don spent his entire service in the Instrument repair subsection at the Yarraville Laboratory Workshop, commencing in 1928 as a Student Tester with Tests and Protection Engineer's Section of the Electrical Branch, Design and Construction Department, now known as Control Equipment Testing Subdivision, Tests Division, Transmission Dept.



HAROLD HARDY

By the time he retired as Shift Electrician at Yallourn Power Station on February 13, Harold Hardy had built himself a home at Herne's Oak, a holiday retreat at Inverloch and a fine reputation as a handyman. You could say he was building himself up for retirement. Harry joined the SEC in 1937 and became a Shift Electrician in 1946.



TED BROADLEY

A travelling case, a bottle of Scotch and a long service certificate from the Federated Storemen and Packers' Union were presented to Ted Broadley on the occasion of his retirement as Storeman at Mount Beauty on March 27. Ted plans to travel to Kalgoorlie (W.A.) to renew old friendships. He joined the SEC as a Laborer in 1948.



TED HARRY

A wallet of money was presented to Ted Harry who retired as Administrative Officer with Industrial Relations Division, Personnel Dept. on March 16, after more than 45 years with the SEC. Ted will spend his time gardening and growing roses. He also plans to travel overseas. He joined the SEC as a Junior Clerk at Yallourn in 1928 and was able to gain a good knowledge of the SEC's industrial procedures and application of awards whilst serving in the Industrial Office there for nine and a half years. Before progressing to the position from which he retired Ted worked as: Works Industrial Officer, Kiewa; Acting Senior Clerk and Assistant Industrial Officer with Personnel Division; Chief Clerk, Industrial Branch; Works Personnel Officer, Morwell; Works Accommodation Supervisor, Yallourn; Chief Industrial Assistant, Industrial Branch; and Chief Clerk, Chief Advocate's Staff.



ROY BRUGGY

Former Senior Clerk at Bairnsdale, Roy Bruggy will spend some of his time fishing with the new rod and creel of fishing gear presented to him by Branch Manager Herb Trevenen at an office farewell on March 21. Later that day Roy was presented with an automatic wrist watch at a farewell dinner/smoke night at the Maralinga Reception Centre in Bairnsdale. Forty branch personnel and retired men attended the function. Roy joined the SEC as a Clerk in the Accounting Section at Kiewa in 1951. He spent the next nine years on clerical duties in SEC offices at Colac, Port Fairy, San Remo, Ringwood, Dandenong, Chelsea and Dandenong again. He became Senior Clerk at Bairnsdale in 1968.



LES JUHASZ

Les Juhasz intends travelling to his native Hungary following his retirement as Photometric Supervisor with Meter and Tests Section, Distribution Engineering Dept. on March 19. He was presented with a leather briefcase by his SEC friends. He joined the SEC as an Electrical Tester in 1958. During the time that Les was Supervisor of the Photometric Laboratory it achieved registration with the National Association of Testing Authorities.



JACK DICKSON

After 42 years SEC service Jack Dickson retired as Administrative Officer with Finance Dept. on April 4. He joined as a Junior Clerk in Records Section advancing to Fuel Sales Branch and gaining a Bachelor of Commerce degree through part-time studies. After working in Secretarial Branch he spent three years in the RAAF during the war before returning to Administrative Dept. In 1949 Jack opened the SEC office in London as headquarters for senior SEC officers who were contracting the purchase of much needed plant and equipment in the United Kingdom and Europe. Operation of the London office continued until early in 1955 when Jack returned to Melbourne. From then on he made steady progress to the position he held for the past 12 years.



ERN MCINTYRE

SEC transport people from many parts of Victoria travelled to the Cheltenham Road Amenities Block on March 30 to farewell Eastern Metro's. Transport Maintenance Officer, Ern McIntyre. Branch Manager Charles Henson presented Ern with a gold wrist watch and a sheath of flowers was presented to Ern's wife Dolly. Transport Engineer Cliff Gilbert presented him with what the boys called a "King Tuck" outfit — bib, apron and chef's hat. During his retirement Ern will develop a property he has at Warragul and devote more time to reading and his study of ancient and comparative religions. Ern joined the SEC in 1946 as a Motor Mechanic with Transport Branch.



STEVE DYER

Steve Dyer will visit the United Kingdom and see his daughter following his retirement as a Motor Mechanic at the Transport Workshops, Fishermens Bend on March 23. He spent 26 years with the SEC. On the day of his retirement he was presented with a cheque from the Fishermens Bend Appeals Fund at a small farewell function attended by Don Smith, Commercial Superintendent, Transport Division and Don Cragg, Senior Transport Maintenance Officer, Base Workshop. After his trip overseas, Steve hopes to see a little more of Australia.



MRS. JEAN MURPHY

Mrs. Jean Murphy became Mrs. Jean Vickerman a week after retiring as Clerical Assistant with Computer Operations Division, Computer Services Department on March 29. Mrs. Murphy, a widow married widower, Mr. Alan Vickerman. They intend visiting the United Kingdom and Europe next year. Mrs. Murphy spent 10 years with the SEC commencing as a Clerical Assistant with the Punched Card Section at Metro. Branch. She acted as Supervisor for some months.



BERNIE GREEN

Bernie Green decided to retire early from his position as Senior Clerk, Plant Division, Transmission Dept. to devote time to renovating his home. He left the SEC on April 4, after 23 years' service. During that time he commenced as a Clerk with Stores Section at Footscray, working there until 1958 when he transferred to Engineers' Clerks, Secretarial Dept. He progressed through a number of clerical positions to the position from which he retired.



RAY NORDEN

One of the largest crowds witnessed at a Latrobe Valley farewell crammed the Yallourn Visitors' Centre to say goodbye to former Yallourn Municipal Works Engineer, Ray Norden on February 28. His community work has made Ray a popular figure in the area. He was a committeeman with the Yallourn Football Club for 22 years, of which he put in 14 years as president. He is a former president of the Mid-Gippsland Bowling Association and a past president of the Central Gippsland Group of Melbourne Legacy. He is also a Justice of the Peace. Ray was presented with a portable television and an opal brooch for his wife Dorothy. He began with the SEC as Assistant Civil Construction Superintendent at Yallourn in 1949.

**HILDA FLETCHER**

Staff in the Administration Section at Yallourn are missing Canteen Attendant Hilda Fletcher who retired on February 27 after nine years with the SEC.

**JACK WADDINGTON**

Latrobe Valley Department's tests and Communications Section lost a valued member when Protection and Investigations Engineer, Jack Waddington retired on January 10. He was farewelled by workmates at a function at the Yallourn Visitors' Reception Area. Jack rose from the position of Electrical Operator in AB Section to become an Engineer within four years. He spent 27 years with the SEC.

**MRS. PHYLLIS PYNE**

A pearl necklace and matching ear-rings were among the farewell gifts presented to Mrs. Phyllis Pyne who retired as Canteen Attendant at Newport Power Station on April 5, after 17 years with the SEC. Mrs. Pyne started at Newport as a Cleaner. A keen gardener and animal lover she will spend her time travelling and playing golf at Lara.

**PHYLLIS WOODWARD**

Phyllis Woodward will take life as it comes and perhaps a trip to Queensland this winter following her retirement from Central Records Registry, Secretarial Dept. on March 18. She was presented with a clock and an Iron at her farewell. Phyllis joined the SEC nine years ago as a Clerical Assistant in the Correspondence Section of Metro. Branch. After a reorganization of departments in 1969 she transferred in the same capacity to the position from which she retired.

GEORGE McARDLE

George McArdle received an envelope of money and a kitchen clock from his workmates when he retired as a Skilled Builder's Laborer at Kiewa on February 17. George joined the SEC as a Chuck Attendant in 1940 and worked as a Plant Attendant, Drill Runner and Builder's Laborer before being appointed to the position from which he retired.

PADDY O'BRIEN

A wrist watch and a wallet of notes were presented to Paddy O'Brien who retired as Plant Operator at Kiewa on March 22. A former president and selection committeeman with the Bogong Football Club, he will spend his time working for the club again this season and fishing. He joined the SEC in 1946 as a Laborer and worked as a Tractor Operator before transferring to Red Cliffs for a short term to assist in flood relief operations in 1956.

COMING RETIREMENTS

APRIL 15:

Mountjoy, W. G., CAO, Eastern Metro. ESB.

APRIL 19:

Catterina, J., Welder Special Class, Power, Latrobe Valley.

APRIL 20:

Smela, H., Section Leader, Fuel.

APRIL 21:

Smithers, E. F., Commercial Supt., Transport, S&GS.
Farrugia, S., Cleaner, Richmond Power Station.
Giltinan, R. H., Asst. Const. & Op. Eng.,
Transmission.

APRIL 22:

Stephens, C. W. M., Overseer, Metro. ESB.

APRIL 26:

McLean, D. C. A. G., Design Eng., Transmission.
Ryan, D. J., Foreman, Transmission, Latrobe Valley.
Rowe, S., Electrical Operator, Northern & Mid. ESB.

Harris, S. W., CAO, Gippsland ESB.

Harris, Mrs. J. E., Supervisor, Secretarial.

Hill, L., Pumpman, Coal, Latrobe Valley.

Sovers, E., Telecommunications Mech.,
Transmission, Latrobe Valley.

APRIL 27:

Taylor, Mrs. A. B., Part-Time Cleaner, Central Workshops.

APRIL 29:

Page, F. H., Communications Officer, Transmission, Kiewa.

Rogers, V., Fitter & Turner, Transport, S&GS.

APRIL 30:

Nicholls, R. S., CAO, Northern & Midland ESB.

MAY 1:

Clough, R., Carpenter, Power, Latrobe Valley.

MAY 2:

Cousins, W. A., Storeman Supv., Stores, S&GS.

MAY 3:

Conway, J., Senior Elect. Inspector, Elect. Inspection.

MAY 9:

White, L. J., Overseer, Coal, Latrobe Valley.

MAY 10:

Carmichael, A., 1st Class Machinist, Services, Latrobe Valley.

MAY 11:

Bail, T., Cleaner, Central Workshops.

MAY 13:

Caffin, R. F., Design Engineer, Projects, Power.

MAY 15:

Williams, S. O. J., Skilled Laborer, Construction, C&A.

MAY 16:

Scouler, A. R., Asst. Ind. Sales Supt., Sales.
Smolarek, B., 1st Class Machinist, Central Workshops.

MAY 17:

Potts, K. L., First Aid Supervisor, Latrobe Valley.

Cardinia trip for Retired personnel

A successful one-day bus tour was enjoyed by eighty-five members of the SEC Retired Personnel Association and their wives, on Thursday, March 20.

The party had lunch at Mt. Dandenong and a conducted tour of the new Cardinia Reservoir, arranged by the Board of Works.

The five-day tour to the Gippsland Lakes, which was proposed for April 29 will not now take place, due to an insufficient number of passengers.

On May 8, Brigadier J. Field will tell of the forced landing of an aircraft in the New Guinea jungle and the rescue of crew and passengers.

A film entitled "Deep Sea Endeavour" will be screened on June 12.

Further details of the Association's functions can be obtained from Chairman, Fred Barnett, phone 569 8727, or Secretary, Reg Stephens, phone 762 2082.

OBITUARIES

Mr. Bernard Dean Birrell, aged 61, on March 3. A Leading Hand Fireman with Power Stations Div., Latrobe Valley, he joined the SEC in January, 1956.

Mr. Alan McArthur Docker, aged 50, on February 17. A Carpenter with Construction Div., C&A Dept., he joined the SEC in February, 1969.

Mr. Raymond Lovett Dudgeon, aged 75, on March 22. Formerly an Engineer with Technical Services Section, Production Department, he retired in May, 1963. He left a widow, two sons and two daughters.

Mr. Arthur Charles Evans, aged 66, on March 6. Formerly Supervisor, Construction and Operating Division, Transmission Dept., he retired in August, 1972. He left a widow, a son and a daughter.

Mr. R. H. Jenkins, aged 57, on March 14. A Technical Service Officer with Metro. Branch, he joined the SEC in April, 1932. He left a widow and a married daughter.

Mr. Johannes Anthonie Morrison, aged 66, on March 15. Formerly a CAO with Commercial Division, Latrobe Valley Dept., he retired from the SEC in November, 1972. He left a widow, two sons and a daughter.

Mr. T. Swoboda, aged 50, on March 11. A Turbine Driver with Yallourn Power Station, Latrobe Valley Dept., he joined the SEC in June, 1955.

Mr. James Alfred Turpin, aged 62, on March 7. A Trades Assistant with Morwell Power Station, Latrobe Valley Dept., he joined the SEC in April, 1956.

Mr. Bright George Vale, aged 74, on February 28. Formerly a clerk with Secretarial Dept., he retired in May, 1964.

SENIOR APPOINTMENTS

**MR. FIELD****MR. MOORE**

Mr. Fred Field, AASA, has been appointed Administrative Officer, Administration Section, Metropolitan Electricity Supply Branch. He joined the SEC in February, 1935, and was formerly Assistant Accountant, Metro. Branch.

Mr. Merv Moore has been appointed Superintendent, Services Section, Commercial Division, Metropolitan Electricity Supply Branch. He joined the SEC in June, 1939, and was formerly Superintendent, Customer Accounts, Commercial Division, Metro. Branch.



IT'S DRYING TIME AGAIN

The footy season is here again bringing with it wetter weather, more goals for McKenna and mountains of washing for Mum.

In one year the average suburban housewife in a family of four carries about two tonnes of washing a total of 64 kilometres to and from the rotary hoist line.

To make matters worse Melbourne averages 143 wet days a year. How is mother able to weatherproof those winter washdays?

Once again Sales Department has come up with the answer — install an electric dryer.

An electric tumble dryer can slash by three hours the time Mum spends on the weekly wash. That adds up to 20 working days a year and to many women that time represents a substantial holiday.

Most tumble dryers are loaded in the same style as a front-loading washer — with about 2.7 kg to 4.5 kg of clothes. The load gently tumbles while warm air is forced through the chamber driving off all moisture.

An automatic timer switches off the machine at the time pre-set by the operator and some models have a sensor which switches off the machine when drying is completed.

Tumble drying gives a soft finish to all garments and space is no problem. Dryers can be mounted on a wall or in any handy small space.

FUTURE SHOCK?

Planners have been giving us their ideas on future power generation possibilities with increasing regularity. We have all heard of solar power, and ideas for generation of power using giant windmills, the sea's waves and the heat from the core of the earth.

But Engineer, Leighton West, from Industrial Sales, has been taking a quiet look at a number of ways in which the SEC could maintain supply in the event of some future emergency.

One of his proposed schemes involves the generation of electricity using direct manual labor of the SEC's 18 600 employees, by the establishment of a few key power stations at major city and country offices.

As an example, Monash House would be refitted to accommodate 800 people per floor, each seated at a pair of pedal cranks, which could be coupled in rows to a number of individual alternators.

At maximum demand on the system it is estimated that our present employees could generate approximately 5.4MW (compared with our existing demand of around 2 400MW), at which time each employee would be required to work at the rate of .50 hp (men) and .35 hp (women), equivalent to running up a staircase.

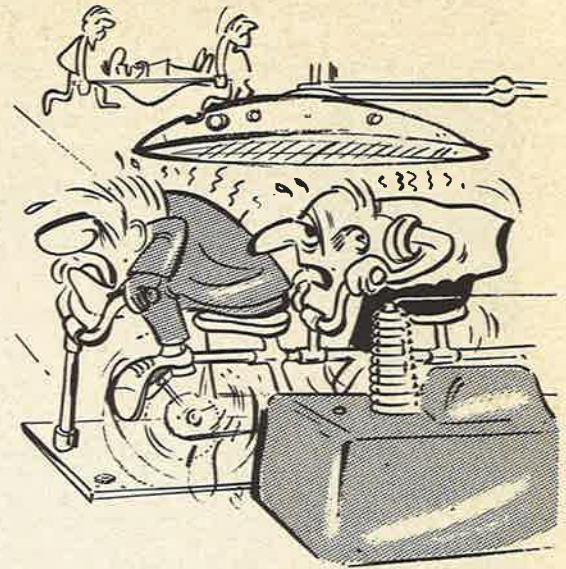
At other times, an average load of 1.6MW could be maintained with each employee working at .15 hp (men) and .10 hp (women).

This generating capacity would be adequate for the Maximum Demand of approximately 3500 homes with some supply being available for industry at other times.

While at maximum demand, each employee's heart would be working at up to 1 hp and his body radiating up to 1 kW of heat. The extraction of body heat by their air conditioning system would be converted to an average of 13 000 gallons/hour of hot water and would be adequate for general purposes of the 3500 homes.

At times of low system demand, employees would be released from generating duty to attend to Distribution and Meter Reading activities.

Heated executive conferences would be scheduled at times of maximum requirement for hot water.



Advantages of the scheme are an increased plant life, and improved physical fitness of employees.

One of the problems envisaged, however, is the difficulty of ensuring that Branches co-operate with Head Office by pedalling at synchronous speed. Union support for such a scheme may also be difficult to obtain.

On the brighter side, however, the more militant women's liberationists may insist on carrying an equal load, thereby increasing output.

ENGAGEMENTS

Raitt, Keith (Sales, Eastern Metro.), to Jeannette Davis (Typist, Eastern Metro.).

MARRIAGES

Bowers, Marilyn (Special Typist, Mid-Western), and Russell Lockhart of Dean, at Buninyong, on March 9.

Dempsey, Ian (CAO, Transport), and Christine Bathman of Broadford, at St. Andrews Presbyterian Church, Broadford, on March 9.

Holmes, Glenda (Special Typist, Bendigo), and Ken Rusbridge of Bridgewater, at St. Pauls Cathedral, Bendigo, on April 20.

O'Donnell, Heather (Typ./Clerical Asst., Bendigo), and Peter Slater of Bendigo, at St. Therese's Church, Bendigo, on March 23.

Roberts, David (Linesman "A", Mid-Western) and Sandra McKie, at Ballarat on March 9.

Supple, Colin (CAO, Transport) and Therese McKew of Gooroc, at St. Arnaud Catholic Church on March 9.

Wicking, Dianne (Plan & Photographic Centre) and Ralph Edwards (Metro. Branch), on March 29 at Essendon.

BIRTHS

Bell, to Elaine (formerly Typist, Power Dept.) and Michael (Draftsman, Power Dept.), a daughter, Kylie Jane, at St. Vincents Private Hospital on March 23.

Brewer, to Pat and Clive (Linesman, Bendigo), a son, Jeffrey Clive, on March 21.

Charity, to Mark (Linesman, Colac Const. Gang), and Christine, a son, Damlan Mark, at Colac Hospital on March 9.

Ferris, to Ken (Area Supply, Mid-Western Branch) and Betty, a son, Ross Matthew, on February 5.

Johnson, to David (Internal Audit) and Lorraine, a daughter, Michelle Kate, on March 11, at Essendon Hospital.

Pritchard, to Ian (Accounting, Barwon Branch), and Valda, a daughter, Christine Michelle, on February 10.

FAMILY ALBUM



JOHN AND ANN LANIGAN

Father and daughter, John and Ann Lanigan both work with Computer Services Department at Monash House. John is a Data Preparation Officer and Ann is a Punchcard Operator. Before transferring to the department 10 years ago, John was with Finance Department. He has been with the SEC almost 24 years. Ann, 19, joined the SEC three years ago. During his spare time John likes to sail dinghies whereas Ann prefers ballroom dancing.



BIRD OF THE MONTH

This year's Ballarat Begonia Festival was brighter than ever thanks to a rare bloom called Teresa Hoogenboom. Teresa, 20, a special typist with Correspondence, Mid Western Branch, was sponsored by the social club as an entrant in the recent Miss Begonia Queen Contest. Her interests are ballroom dancing, classical music, squash and swimming. Apart from her boyfriend, Richard Burton rates as her favorite male. A native of Holland, Teresa didn't win the Miss Begonia contest but she's sure won us.

READERS SERVICE

FOR SALE

- Motor bike, Suzuki A100, mechanically A1, looks like new, reg. & r/w, urgent sale \$220 o.n.o. ALSO, shoulder length brown wig, 100% human hair, \$20 o.n.o., and short brown wig, \$8 o.n.o. Phone Patricia Brown, M.H. 3301, a.h. 842 2924.
- 5 only 560 x 13 Cortina rims, c/w tubeless tyres, v.g. cond. D. Moore, ext. 3490, Lyle House.
- Drying cabinet, Astor automatic c/w fan, as new \$30. W. Anderson ext 3491, Lyle House.
- 8-track cartridge player, incl. 2 stereo speakers, 13 months old, exc. cond., (new \$60) \$48 o.n.o., J. Chrzanowski, M.H. 2434.
- Standard wood internal house door, white, and hinges. Super Convair briquette space heater, Vykin glass and 2-speed fan. Jones cabinet sewing machine. Double bed convertible settee - vinyl cover. All good condition. Offers K. Luscombe, a.h. 57 7116.

- Motor bike, Kawasaki 100cc trailbike, 9 months old, low mileage, one female owner, not used for trail riding, as new, registered for road use, new \$535, sell \$340. C. Liddell, Richmond ext 281 or a.h. 46 1500.
- Philips cassette recorder with hand microphone & carrying case. \$20 o.n.o. Jim Cullen, Keilor T.S. 336 1050.
- Inlaid teak chess/coffee table, 3ft X 20in., all wood, new, \$37. M. Hofmann, 429 1511 ext 354 or 355.
- Skis, 205C.M., steel edges, plastic soles, fitted with marker "step-in" toe & heel release safety bindings \$35. Lionel Swift, ext 3564.
- Encel stereo valve amplifier, 10 watts, suit any hook-up, \$45 o.n.o., B. Ansell, Greensborough office, 435 2211.
- Nikkor 300mm f4.5 lens with carrying case, exc. cond. \$180. Leica M3 with 50mm f2 Summicron lens and carrying case, \$200. Dynaco Pat-4 preamp and ST-120 power amplifier, \$280. Patricia Brown, M.H. 3301.

WANTED TO BUY

- Falcon GT 289, 1967 model, body motor & interior must be excellent. Cash transaction. John Ciercan, Latrobe Valley ext. 3760.

WANTED

- Used rolls for player piano Duo-art or standard. Contact Hans Brinkies H.C.S.L., Richmond ext. 491 or home, 4 Liege Ave., Noble Park, phone 792 9698.

FOR HIRE

- 16ft. 6-berth white Viscount caravan, gas. elect. fridge, gas stove, level ride, annexe. Contact D. Hampson, Eastern Metro. ext 520, or 792 5139.

TO LET

- Rosebud, modern holiday house, fully furnished, 3 bedrooms, close beach and shops. P. Heyward, a.h. 93 6340.
- Excl. new holiday flat, Bright. Fully self-contained, accom. 5, quiet area, handy shops. Available also for weekend bookings. Contact E. Jensen ext 3598.

THANKS

- Mr. & Mrs. King and family would like to express their heartfelt thanks to all the people who worked with and knew Chris, for their kind thoughts and sympathies after his unfortunate death. (Chris was a Trainee Draftsman.)
- Thanks from the Kew scouts to the men at Keilor T.S. for making their visit so informative and enjoyable.

MYSTERY APPLIANCE

If you're still unsure of the mystery appliance pictured on our "Flashback" cover last month, we may have solved the mystery.

Several readers thought it may have been a cigar lighter, but the majority of people who contacted us were able to identify it as a device for heating hair tongs. These were used for creating the once-fashionable "Marcel wave" look.

The circular dish on top was used to rest the tongs while they were temporarily not being used.

FLASH BACK

In 1956 the October-November issue of SEC News carried a picture of two unknown ladies enjoying an alfresco lunch on the site of the Yallourn railway station. Readers were asked to identify the femmes and to advise the magazine staff whether or not they were working at Yallourn.

Almost 18 years later Retired Personnel Association secretary, Reg Stephens is still trying to find out. And this month's "Flashback" is an attempt to solve the mystery. Until recently Reg thought the lady on the right may have been his sister but now he's not so sure.

However, Reg can throw light on other aspects of the photograph. For instance, the wooden beams which provided the table and seating for the ladies were hewn with a broad axe wielded by Josiah Waymouth about 1921. That gives us a clue to when the "snap" was taken.

The beams were shaped from trees felled during clearing operations at the railway site. Some became approach spans on the Eastern Road bridge which carried trains over the Eastern Road from the railway yards to Yallourn Power Station and the open cut.

Reg, who worked at Yallourn from 1920 until his retirement as a Clerk in 1966, tells us that between the 1920's and 30's a large notice board of galvanized iron informed football supporters of the fare and departure time for trains to Warragul, Drouin or Nar Nar Goon.

By unusual but not improper circumstances Reg has the original sheet of iron at his Boronia home. He hopes to have it renovated and mounted alongside the steam locomotive which stands at the Moe Folk Museum.

As for the Eastern Road bridge, that was dismantled some years ago following the commissioning of the loop line from Moe to Yallourn which also rendered the Herne's Oak branch line redundant.

Reg is interested in hearing from any readers who have photographs of the Eastern Road bridge, particularly any which include the old train notice.

He is also keen to locate the original picture of the two ladies, so that he can examine it in detail.



Father of champions

Barwon Branch Linesman, Joe Bucek could soon be a world champion father — or, more correctly, a father of world champions.

But whether this is the case or not, Joe is very proud of the achievements to date of his daughter, Addy, 13, and his 17-year-old son, Frank, in the yachting world.

In August, Frank and Addy are off to Portugal to represent Australia in the World Championship of International Cadet Dinghies.

They earned the honor of representing Australia by winning the national championship at Glenelg, South Australia, recently.

Their dinghy, "Anaconda", which Frank skippers with his sister Addy as crew, was built by an elder brother with Frank's assistance three years ago.

Frank and Addy are both students at Geelong High School, and have been sailing for five and three years respectively.



Barwon Linesman, Joe Bucek with his daughter, Addy, and son, Frank, and some of their yachting trophies.

Home on the range

Don't take this the wrong way, but Colac Leading Hand Linesman, Bill Bennett has a real shotgun family — and before Bill shoots us, we'd better explain what we mean.

Bill is President of Colac Smallbore Rifle Club, and his daughter Julle and son Kevin are both keen on the sport.

Just over a year ago, Bill's wife, Hazel took up the sport, and recently Bill, as President, had the pleasure of presenting her with the Australian Women's Short Range championship medal. Hazel won the 1 grade section of the championship.

Hazel said she started shooting to keep up with other members of the family when she decided it was a case of "if you can't beat them, join them". Or maybe that should be the other way around.

Hazel finished the championship rounds with 32 points from a possible 40, and an aggregate of 892.9. Her nearest competitor was a Queensland woman with 28 points and an aggregate of 861.5.

Smallbore shooting is gaining popularity with women as a sport in every State. Three years ago the Colac club had one woman shooter, but now has five registered women.

Tom swings hefty axe

Benalla axeman, Tom O'Donnell completed a championship hat-trick in woodchop events.

Tom, who is Distribution Foreman with North Eastern Branch, won the 39in. standing block at Tawonga, the 37in. standing block at Tolmie, and the 41in. standing block at Corowa.

Cutting in fine style, he put the 41in. block down in 28 seconds to beat current Victorian champion, Gary Smith of Eskdale.

Tom also topped his championship win at Corowa with a win in the 37in. standing block handicap event.

sports shorts

Mansfield ADM, Tom Wickham, is current Champion of Champions for the Central Bowling Association District of Victoria.

Tom is Secretary of the Mansfield club and also champion. Central Bowling Association covers the areas of Seymour, Kilmore, Alexandra, Whittlesea, Eildon and surrounding districts.

★ ★ ★ ★

Darryl Johnston of Dandenong Accounting, Eastern Metro Branch, was named "Sportsman of the Week" by a local newspaper.

Darryl has had a successful running season, and specialises in 100, 200 and 400 metre events, as well as hurdles. He belongs to the Springvale-Noble Park Amateur Athletic Club.

A tireless club worker, Darryl is presently Treasurer, and is a past Vice-President. One of his major recent fund-raising feats was to collect many tons of newspapers.



Bill Bennett presents his wife Hazel with her championship medal.

if you know
of any
news



...tell the
Editor

Public Relations
Department,
Monash House,
15 William Street,
Melbourne

615 2974 - 2975