

*Rooney*  
**CONTACT**

DECEMBER, 1977







**Above:** The sixteen Power Generation employees to receive 'Brown Power' were (from left) back row: Col Harvey, Rod Bennett, Tom McAlister, Bob Whitford, Frank Tomlinson, Jim Lucas; Centre: Jack Fisher, Tom Skerry, George Beulke, Bruce Johnston, John Scully; Front row: Lyle Sears, Stan Wright, Ken Passey, Bruce McRichie and Lee Martin.

# "BROWN POWER" FOR 30 YEARS SEC SERVICE

Seventeen Power Generation and 22 Coal Production employees were presented with a copy of "Brown Power" in recognition of 30 years service last month.

The 17 Power Generation employees were presented with the book by Yallourn power station Superintendent Bruce Johnston at an informal function in the YPS lecture room.

The twenty-two Coal Production employees were pre-

sented with "Brown Power" by Manager Coal Production Jack Vines at a function held in the Latrobe Valley visitors centre at Morwell.

• "Brown Power" was written by Cecil Edwards, a former editor of the Herald, and tells how the SEC has developed an electric power system, based on the use of brown coal resources.



**Right:** The Coal Production employees are pictured after their presentation (from left) Back row: Bob Murray, Bill Stevens, Charlie Sparks, Roy Campbell, Joe Kirkup, Frank Rennie, Roy Mawby, Ron McPherson; Centre: Col Johnson, Dick Cannot, Charlie Stace, Fred Badenhope, Eric Hansen, Lyle Horton, David Davies, 'Dusty' Skinner; Front row: Norm Harwood, Arthur Daly, Brian Bailey, Ted Crookes, Kevin Willett and Ron Mansfield.

## Contact



Prepared by the L.V. Public Relations Group for Operations Group employees.

## Cover

Enjoying the company of Santa Claus at the Yallourn Main Office Social Club's picnic held at the Cowwarr Weir are (from left) Fiona McKay and Amanda Polson. Full story and pictures page 18.

30 years service is rewarded ....	2
Morwell open cut fire report ....	3
The Female SEC's ....	4
1977 SEC annual report ....	5
Cable joining at RAAF East Sale	6
Tour of resettlement areas ....	7
Holiday safety ....	8
Engineering Services ....	9
Transmission Operations ....	10
Area Administration ....	11
1977 in retrospect ....	12-13
Power Generation ....	14
Coal Production ....	15
Service Register ....	16
Owendale pony stud ....	17
Christmas picnic ....	18
Dragline has a big job ....	19
Loy Yang on the move ....	20
Gas Turbines ....	21
Retirements ....	22





Bob Rawlings (right) plays his bowl during the final end of the 'C' station indoor bowls championship. Keith Anderson looks on.

## Bob Rawlings wins carpet bowls final

Bob Rawlings (Cleaner, Yallourn power station) has won the 1977 'C' Station indoor bowls title.

Bob defeated former title holder Keith Anderson 20-16 in an exciting final played before a large crowd early this month.

Victory came to Bob on the last end of the final.

The final was quite a marathon going over three days and taking 22 ends to decide.



**BOB RAWLINGS**

More than 10 people took part in the successful tournament.

Bob Cooper (trades assistant electrical maintenance) presented the winners trophy to Bob Rawlings after the final.

## Computer system

A computer system using visual display units will be introduced early in 1978 to improve customer service and enquiry processing in the Metropolitan Electricity Supply Region.

THE SEC is upgrading air quality monitoring in the Latrobe Valley and will spend \$50 million during the next decade to minimise atmospheric emissions from Latrobe Valley power stations.

### TO LEASE

Agistment available for horses — close to Morwell. Phone Ext. 3295.

## THE FEMALE SECS



WHILE on the Army, Sue Dyer and Linda Hall took part in the Queen's Silver Jubilee services march through Melbourne early this month. More than 3,500 Army, Navy and Airforce personnel took part. Sue and Linda were with a contingent from the 38th Field Squadron, Yallourn.



JUDITH Johnson (formerly Payrolls section, Morwell) gave birth to a bouncing baby boy — Colin Mark — on November 18 . . . congratulations Judith and Phillip.



CONGRATULATIONS to Gary Ellis (Relief clerk) and Jan Radford (clerk, Supplies, Yallourn), who were married in Yallourn last month. Gary and Jan will make their future home in Churchill — Good luck for the future.



WENDY Haustorfer (typist, Stores, Morwell) has joined the Army. She has signed up with the 38th Field Squadron at Yallourn. Wendy is the third female to join the Squadron — the other two are Sue Dyer (typist, Area Admin.) and Linda Hall (typist, Yallourn 'W' Construction).

FOUR girls received promotions from office assistants to CAO grade 1 early this month. They are Leanne Abery (formerly Records) to Personnel, Gail Randle (Finance) to Hazelwood power station, Sue Barnard (Payrolls) stays in Payrolls and Sylvia Houghton (Finance) to Materials and Services . . . Congratulations.



THAT'S all for this month and the 1977 — The Female SEC's would like to thank all those people who have contributed to the column during the year and hope that you have a Happy Christmas and a prosperous New Year.





# Future electricity supply “in jeopardy” — annual report

In its 58th annual report tabled in Parliament this month, the SEC warned of serious problems in meeting the demand for power in coming years.

“The importance of an adequate electricity supply system to the future development of the State cannot be too strongly emphasised . . . and yet the Commission is being frustrated in discharging its responsibility to the community in providing it with an adequate and secure supply of electricity,” the report says.

“The cost to the community of industrial bans and unrest and unnecessary delays which are impeding the completion of vital projects is crippling and a burden which should not have to be borne by the people of this State.

In their report to Parliament, the Commissioners say that the SEC has advanced construction of some sections of the new Loy Yang power station complex “in an en-

deavour to ameliorate the situation.”

“A further measure taken is the installation of 200 MW of gas turbines at Jeeralang gas turbine station adjacent to the Hazelwood terminal station in the Latrobe Valley. “The gas turbine plant at Jeeralang is the only practical means open to the Commission to minimise widespread power restrictions in the shorter term,” the report says.

The SEC Commissioners say that approval in principle has been given by the Government to the installation of an additional 200 MW of gas turbines.



## Gas turbines

“For this second block of gas turbines to have any appreciable effect on the deficiency in the 1979/80 year, it will be essential for this plant to be installed in the shortest possible time,” says the report.


The report says that in order to avoid blackouts the SEC have been depending on power from NSW and on unusually heavy use of water supply reserves.

“During the three months July to September, 1977, the Commission drew almost two-thirds of the average energy available to Victoria from the Snowy Mountains scheme for a full year.

“Consequently, the amount of energy (that is, water in storage) held in reserve for future use was significantly reduced,” the Commissioners say.

The report also says that blackouts were narrowly avoided on a number of occasions during the year, particularly, on 12 days during June and July.

“Had a single one of the large generators on the system failed on any of these occasions, load shed-

  
Yallourn ‘W’ power station (above) is the second biggest power station in the Latrobe Valley.

ding of customer supply would have been necessary as the capacity of the remaining plant available could not have met the demand,” the report says.

Commenting on progress of the Newport power station, the Commissioners say that “the 500 MW unit is planned for commercial service by July, 1980, although this could be delayed for up to 12 months if the bans imposed by the Victorian Trades Hall Council remain in force.

“The State’s electricity system will remain in jeopardy until that time despite the installation of emergency gas turbine plant.”

## Letter to editor

Dear Sir,

*It's nearly 10 years since I retired and in all that time I've never had one of your monthly articles bring a lump to my throat as much as the September-October issue did.*

*There are more persons mentioned in it with whom I worked and had personal contact with than any previous issue, of course I met a lot when I was on the Yallourn power station's social committee.*

*Your story on Page 10, re Bob Gardiner (I worked with him at one time) was very interesting. His ex-foreman Keith Barton now lives in Briebe Island.*

*It's amazing how many former SEC employes there are up this way who read my copy of CONTACT after me, so keep up the good work and once again — thanks.*

Yours sincerely,

Ern Slingsly

P.S.—Compliments of the Season to you all.





Above: Busy testing the cables are (from left) John Arnold (cable joiner), Barry Dolman (apprentice electrical fitter) and Gordon Irvine (cable joiner).



Right: Studying drawings of the burnt-out cable at the RAAF base are SEC District Manager, Sale, Maurie Hughes and team leader Ted Chandler of Hazelwood.

## Specialist team to the rescue

A team of eight cable joiners from Latrobe Valley Transmission Operations, Hazelwood came to the rescue of Sale RAAF base last month.

The specialist crew was called in after a 22,000 volt underground cable developed a fault and burned out, blacking out the base and one-third of Sale township.

Repairs, costing about \$8,000, took two days to complete. Led by Ted Chandler, the team included John Arnold, Gordon Irvine, Nereo Girardi, Ted Burgiel, Barry McMahon and apprentices Barry Dolman and Stephen Johnson.

SEC district manager, Sale, Maurie Hughes said the cable fault could have been the result of a manufacturing defect.

It had only been in service 2½ years — the expected life span was more than 50 years.

Underground mains engineers with Transmission Operations Department will analyse pieces of the cable to find the cause. Sophisticated electronic equipment was used to locate and repair the damaged cable.

More than 22 cubic metres of soil was excavated to enable workmen to replace the 15.24 metres of cable.

A temporary high voltage line was established so the base could continue operations while the repairs were underway.

## Electricity use up by 6.1 per cent

Total electricity use in Victoria rose by 6.1 per cent in the last financial year, compared with a rate of 4.8 per cent in the previous year.

Total domestic electricity use (including that by new customers) rose strongly by 10.3 per cent, while the average electricity use per

household rose by 7.4 per cent. However, there was an increase of only 2.1 per cent in industrial sales.

The SEC's annual report also shows that the maximum coincident demand for last winter was 3,724 MW — an increase of 9.9 per cent over the maximum of 3,389 MW recorded during

the winter of 1976.

The SEC commissioners note that the increase in electricity sales occurred even though "the Commission has for some time completely discontinued promotional advertising."

"Future marketing programs will concentrate on advising customers on the

most economical and effective means of using electricity to satisfy their energy needs," the report says.

According to the report, briquette production rose substantially although sales fell. The increased production was utilised for power generation.





## Advisory council tours Yallourn resettlement areas

Yallourn Town Advisory Councillors have been given a first hand look at progress on Yallourn resettlement projects — and they are impressed.

Area Administration Manager, George Bates and Resettlement Officer Jack Penney accompanied the council on a tour of resettlement areas on November 30.

Council chairman Neil Wishart and councillors Norma Smith, Tony Daddo, Paddy O'Sullivan, Neville Thompson, Jack Robertson and Jack Vines took part in the tour.

Main aim of the exercise was to show the council exactly what stage had been reached in the resettlement program. A similar tour was conducted last year.

After an inspection of Yallourn township, the tour con-

tinued to the new housing estates at Newborough — Tresswell Avenue, Trent Street, Northern Avenue and Newark Avenue — and to the site of the proposed golf club estate.

Councillors were shown through one of the villa units at Newark Avenue, spoke with residents and inspected the garden development.

A visit to the Latrobe Valley Village for the Aged included an inspection of the new Orana Elderly Citizens Clubrooms at present under construction.

After lunch at Yallourn Hotel the tour proceeded to Morwell for an inspection of the Turnley-O'Grady streets subdivision.

*CONTACT's* photographer snapped this picture of the Yallourn Advisory Council's party during their tour of the Newark Avenue units.

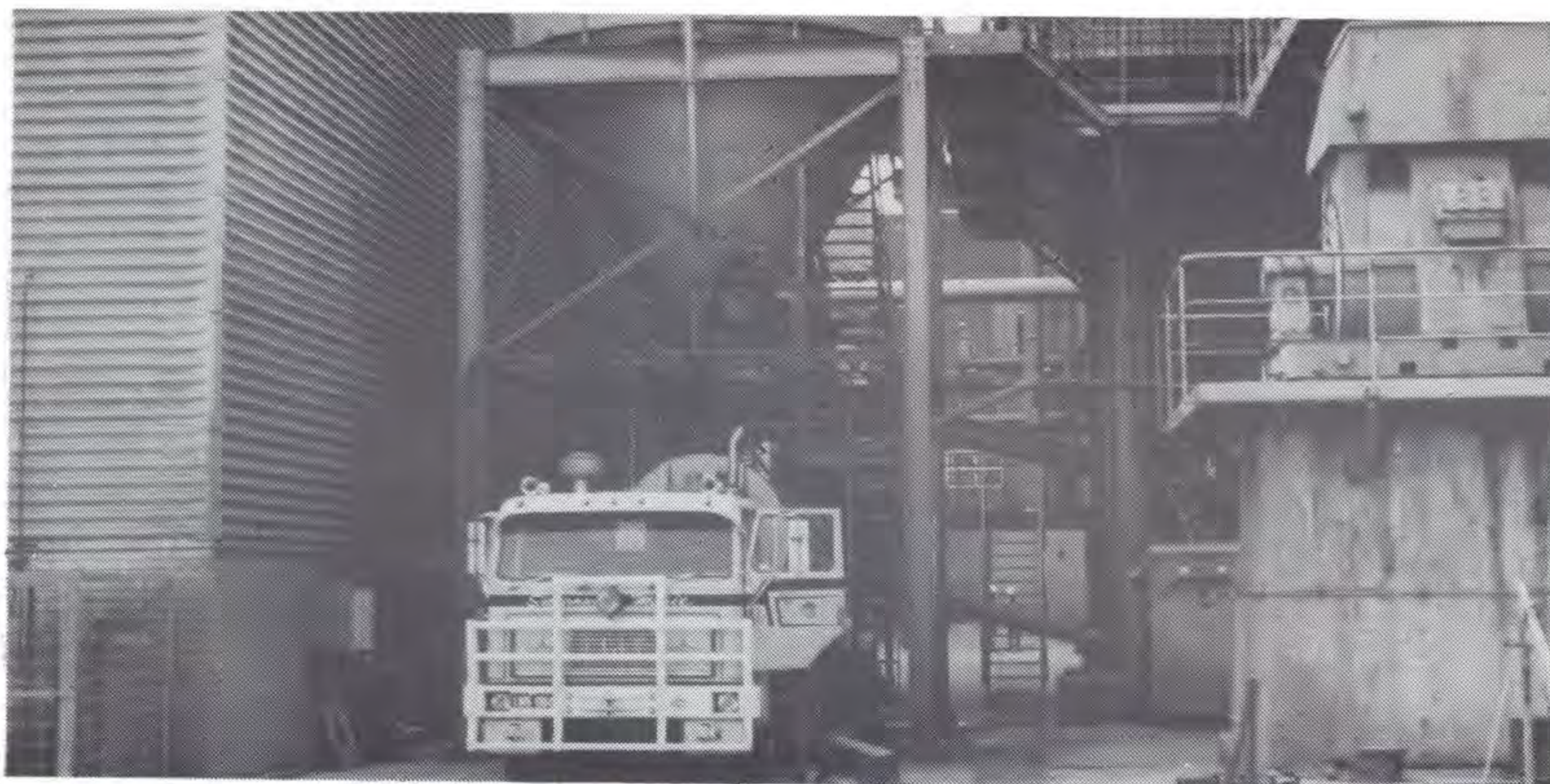


*Considerable interest was shown in the vegetable garden of former Yallourn resident George Evans. Pictured (from left) are Councillors Jack Robertson, Norma Smith, Council secretary Charles Spencer and Yallourn Resettlement Officer Jack Penney.*



*Manager Area Administration George Bates explains their future plans for Newark Avenue to Councillors.*





A truck is pictured collecting the fly ash from the hopper next to unit four at Hazelwood power station.

## Electricity not the only product of brown coal

Electricity isn't the only product of the brown coal from Latrobe Valley power stations.

In fact, Hazelwood power station is contributing to the quality of roads in the Melbourne outer eastern suburban area.

Hazelwood is a low emission power station—electrostatic precipitators installed at the time of construction make sure of that.

Ash produced in the station boilers is collected before it has a chance to escape up the 137 metre chimneys.

Most of the ash is sluiced away to nearby settling ponds but a small amount is proving valuable to road-makers in the Dandenong-Mulgrave area.

Pioneer SConcrete Pty. Ltd. is using the ash as a filler with crushed rock in the preparation of road foundations.

A pilot plant to supply the ash was developed at Hazelwood power station in 1973.

Each of Hazelwood's eight units collects about three tonnes of ash an hour, making a total of 72 tonnes collected daily from each boiler.

With the average seven units operating the daily collection would be about 504 tonnes.

The pilot plan is operating on unit four, with ash being taken from half of one of the three precipitator flows.

Ash from three collection hoppers is channelled by a conveyor system into a 32 tonne storage tank—with a daily input of 12-18 tonnes.

The ash is loaded into heavy transports and taken to Pioneer Concrete's plant at Narree Warren.

## BUSHFIRE SAFETY & SURVIVAL — TAKE NOTE

It is recognised that the south-eastern part of Australia is one of the most dangerous in the world from the point of view of bushfires, and there is never a season which passes without tragic loss of life and heavy property damage occurring.

Unfortunately, because of the very nature of the Victorian countryside and the hot and dry conditions which prevail during the summer months, this State will always be threatened by fires each year.

However, many of the lives which will be threatened can be saved by following basic rules of safety and survival in fires, some of which are given as follows:

### ● FOR THE HOUSEHOLDER

If trapped in or near a house, get inside, closing all door and windows. Get down on the floor in a position furthest from the fire. Before the house is well alight, the bulk of the fire will have passed on and you will then have a chance to escape back through the burn.

Quite often there is a good chance that a house or a number of houses can be saved by the determined efforts of the residents. Where there is a supply of water under pressure available, garden hoses may be sufficient to extinguish the

walls and roof of a house as they catch fire.

This was clearly demonstrated in the disastrous Tasmanian bushfires two years ago when groups of houses survived in localities which were otherwise completely devastated.

In each of these cases it was subsequently found that a number of people under strong leadership had stayed and fought the fires with garden hoses, wet sacks, and any other rough and ready means available.

During these same fires, 21 people died attempting to escape from their homes. In the case of over 50 percent of these victims, the houses from which they were fleeing were not burned.

Houses generally ignite by wind driven embers lodging

### SOLAR WATER HEATING

THE SEC is investigating means of conservation and wise use of energy, including solar water heating, and is supporting research into heat pumps, integrated environmental design for buildings, electric vehicles and improvements to industrial applications of electricity.

in the eaves or beneath the house. In some cases garages or adjacent wood heaps have caught fire and carried the fire to the house. A few precautions taken by householders at the commencement of each season may therefore be sufficient to prevent disaster later on. In particular, hazardous material and vegetation should be cleared from around and under buildings, and it is desirable that eaves, ventilators and other openings are screened with wire mesh. In the event of a fire threat, doors and windows should be kept closed.

### ● FOR THOSE CAUGHT IN THE OPEN

As far as possible, try not to panic. Nearly all fatalities among fire fighters have occurred when they have tried to outrun a fast moving fire. If forced to retreat from a fire, attempt to move downhill and to the edge of the fire. Remember that a fire moves many times more quickly uphill and increases greatly in intensity.

Take refuge in dug-outs, running streams and ponds,

(Continued on Page 23)





ENGINEERING  
SERVICES

## HARD WORK IS PAYING DIVIDENDS

Rehabilitation works to the Morwell overburden dump by Forestry is proving to be highly successful.

Since the early 1960's Forestry has undertaken an extensive program of tree planting and sowing native grasses on the overburden dump with considerable success.

Pine and native trees have been planted on and around the dump. Pine trees have been planted on the southern side of the dump with Australian native trees around its perimeter.

A special pasture grass mix was also sown down on more than 40 hectares and a special mix of fertiliser, which included phosphate and potash with trace elements was applied.

Aim of the rehabilitation works is to return to dump back to a natural state, to blend in with the country side.

Rehabilitation works by Forestry are also being carried out on the Yallourn overburden dump and also meeting with considerable success.



*Pine trees and natural grasses are thriving on the Morwell overburden dump as the picture above indicates. Hazelwood power station is pictured in the background.*

## New trucks are bigger and better

The SEC has taken delivery of two new \$65,000 Atkinson trucks.

The 320 horse-power diesel trucks will carry briquettes from Morwell briquette works to Hazelwood power station.

Based at Morwell with transportation, the 15-20 tonne capacity trucks replace 10 tonne Bedford trucks

which have been used for the past 10 years.

Six-speed automatic transmission is a feature of the four axle vehicles.

Other features include aluminium tipping bodies and lightweight, corrosion resistant cabins.

This is the first time the SEC has used Atkinson trucks, which are manufactured and marketed in Australia by International Harvester.

More of the trucks are expected to be brought into service in the next few years.

More power, greater load capacity and less driver effort are the trucks big selling points.



*The two new \$65,000 briquette trucks (pictured above) were specially designed for the Commission.*





# Latrobe Valley transmission lines team wins

## first aid final



The Latrobe Valley Transmission Lines first aid team has won the 1977 Victorian SEC First Aid Championship.

They defeated Collingwood and Camperdown in the final held at Bendigo early this month.

Members of the winning team were Danny O'Brien (Captain), Ray McBride, Ian McLeod and Glen Cowley.

Transmission Lines were runners-up in last years final to Horsham.

A road accident, in which two young motor cyclists had been injured was the test set for the teams in the final.

Although the setting was fictitious, it was not too far removed from reality, taking place on a weekend which claimed 16 deaths on the roads—many of them young people.

Thirty-six teams entered this years championships.

The first aid competitions, which began in 1941, are conducted to foster interest in first aid, and promote efficiency in dealing with real life emergencies throughout the widespread areas of SEC activity.

They test the ability of competitors to deal with cases under conditions of actual emergencies.

• Each team member received an individual trophy as well as a team trophy.



Proudly displaying their trophies is the Transmission Lines team after the official presentation. They are (from left), Danny O'Brien (Captain), AGM Marketing and Distribution Bob Chapman, Ray McBride, Daryl Jones, Ian McLeod and Glen Cowley.

Examining one of the patients, after the final, are (from left) Ian McLeod, Danny O'Brien and Ray McBride.

A large crowd watched the final held in the Bendigo Technical School.







AREA  
ADMINISTRATION



Looking at brochures in front of the display caravan are (from left) Janette Robbins, Vicki Pattinson, Michael and Kent Robinson, of Traralgon.



The Pieterse family of Traralgon are pictured looking at the display inside the mobile caravan. They are (from left), Kathleen, Carol, Peter, Clare and Peter Snr.



## Interest shown in display

Considerable interest was shown in the SEC's display at the 1977 Traralgon Show on November 25-26.

More than 1,000 people visited the display, in a 27 ft. air-conditioned caravan, situated in the north-western corner of the Traralgon showgrounds.

The theme of this year's display was Caring for the future and included an up to date report on the large Loy Yang project.

The display featured a comparison, in size, between the new Loy Yang dredgers and the Central Gippsland Hospital at Traralgon.

Public Liaison Officers and the SEC's Senior Guide Bill Hopkins were on hand to answer the hundreds of inquiries on Loy Yang and other aspects of SEC operations.

Visitors from as far as Warragul, Lakes Entrance, Leongatha and Maffra inspected the colorful and comprehensive display.

## Impressed with SEC — Indian visitors

A leading Indian journalist, and cartoonist, visited the SEC's Morwell and Yallourn works areas early this month . . . and were most impressed with what they saw.

They were Vinod Mehta, editor of 'Debonaire' a monthly new magazine in Bombay and Mario Miranda, a cartoonist with the Bombay Times, which has a daily circulation of more than 500,000.

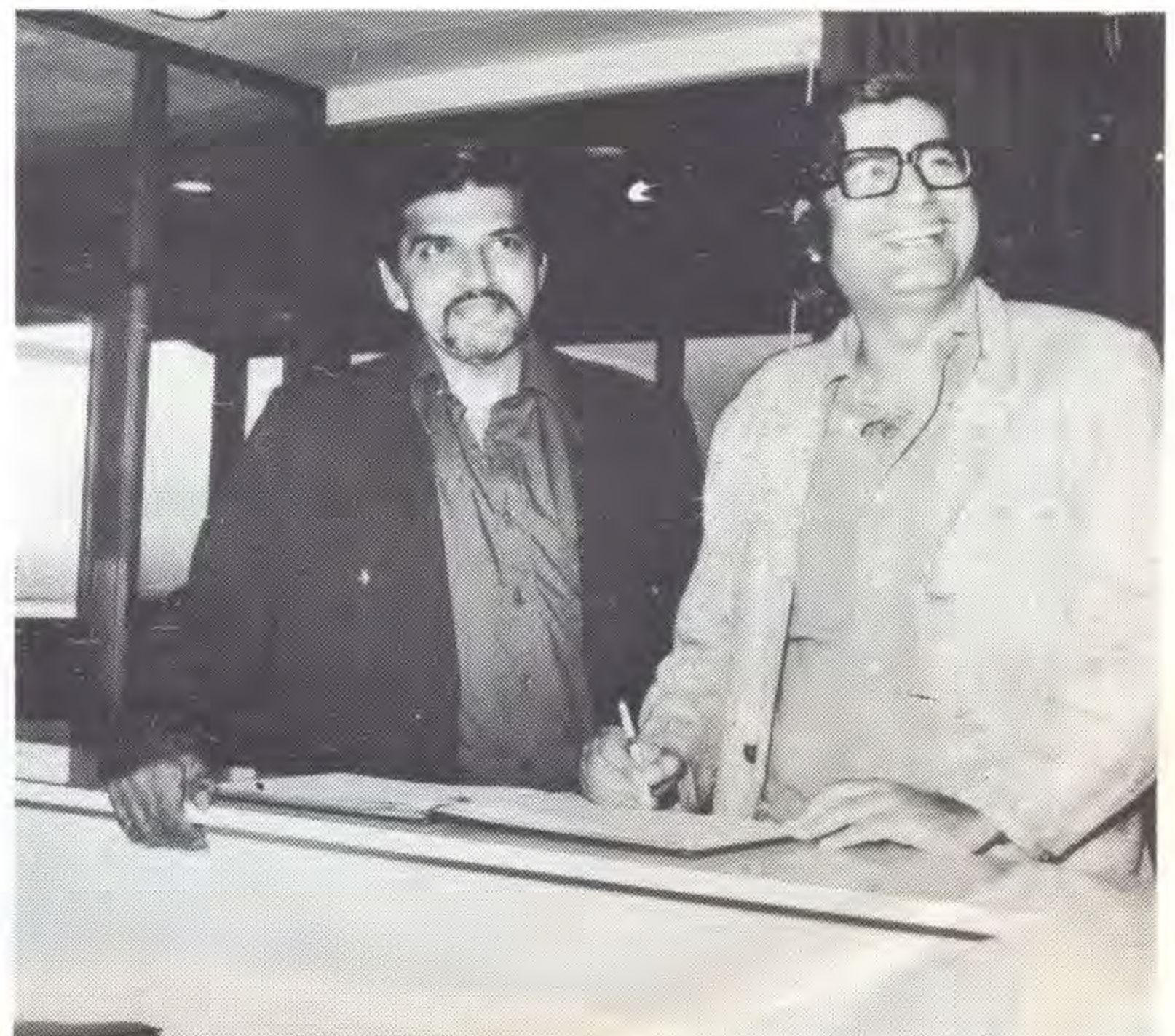
Mario is one of the world's leading cartoonists.

The men were in Australia on a 10 day visit, sponsored by the Australian Information Service.

While in Australia they produced several feature articles on industry, people and Australia.

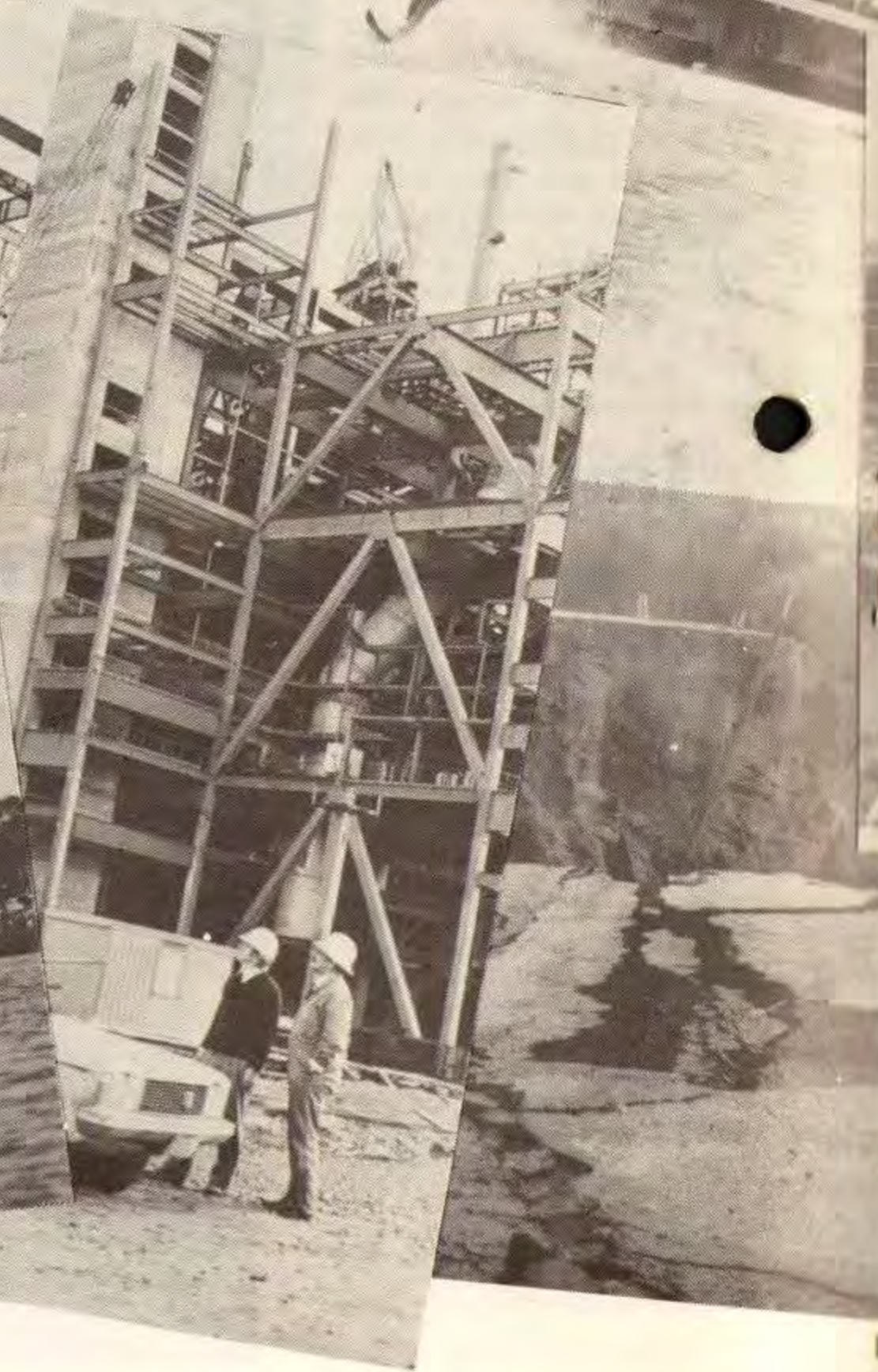
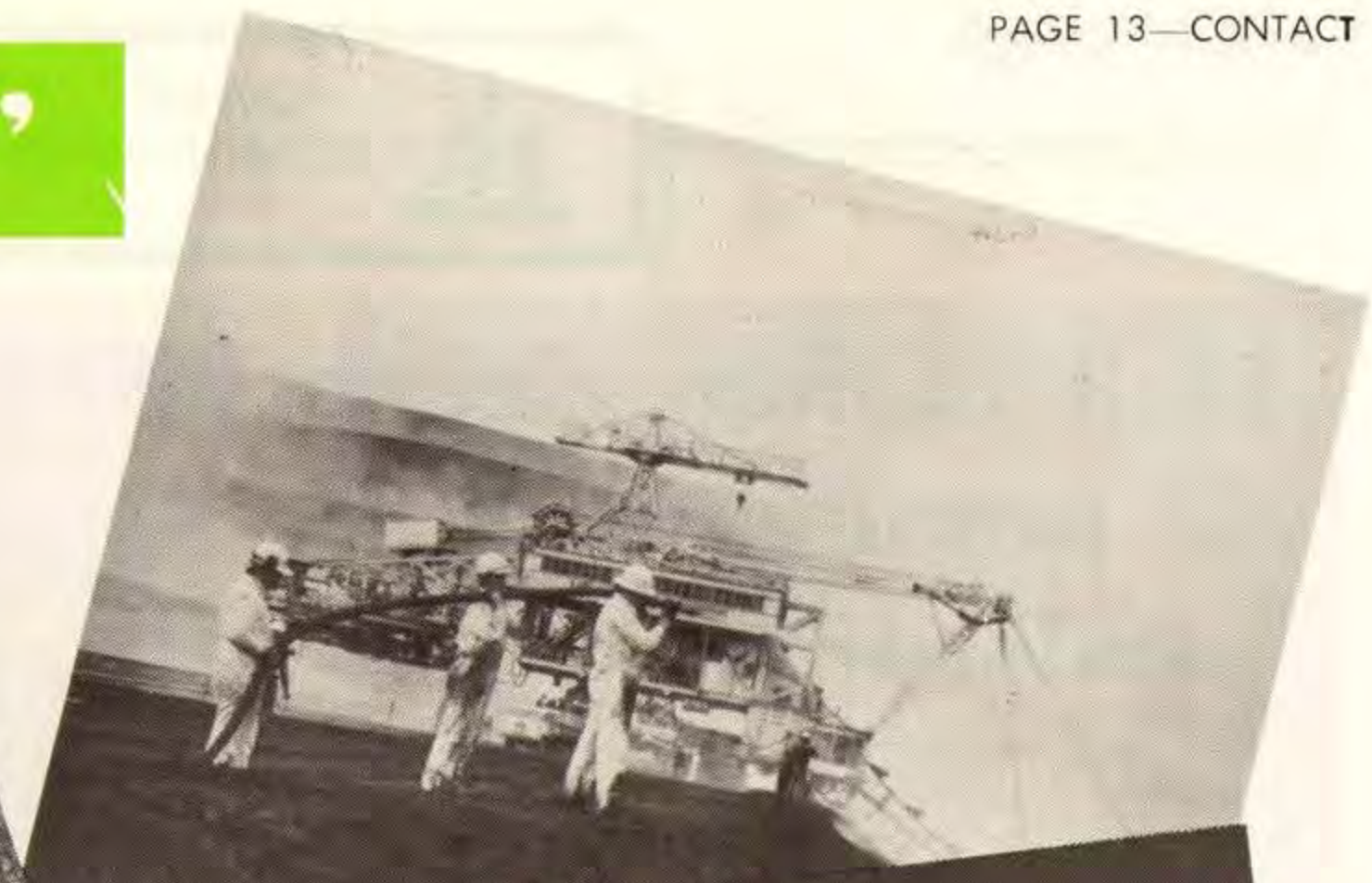


Pictured signing the visitors book in the La Trobe Valley visitors centre are (from left) Mario Miranda and Vinod Mehta.





1977 as seen by "CONTACT"







## \$6.8 million cleaner air program underway

Work has begun on a \$6.8 million program to reduce dust and ash emission from Morwell Power Station.

Workmen are now on site under a contract awarded to Lurgi (Aust.) Pty. Ltd. for installation of electrostatic precipitators for each of the station's eight boilers.

Precipitators extract dust and ash particles from boiler gases before they are discharged to the atmosphere.

Manager Power Generation Jack Robertson said today that the precipitators, which will replace existing mechanical dust collectors, will considerably improve collection efficiency at the station.

Lurgi's offer was the lowest received from five tenderers for the supply, delivery and erection of the precipitators and associated ash removal equipment, and supply of spare parts.

Site preparation began late last month and electrode collecting plates have arrived on site.

Erection of pre-fabricated steel framework is under way.

The plant will be installed progressively over the next four years.

Mr. Robertson said the first two precipitator sets were scheduled for operation by the end of May next year. The project would be completed by 1981.

The precipitators would have design features based on operating experience in existing generating plants.

Morwell Power Station, with a capacity of 170 megawatts, is the smallest



*Initial site works (above) have begun for the installation of the electrostatic precipitators at the Morwell Briquetting and Power Installation.*

## 97-tonne load makes it to Yallourn

A huge 97 tonne turbine casing, on a specially converted 10 axle — heavy transporter, arrived at the Yallourn 'W' Stage 2 construction site last month.

It is believed to be the largest load to arrive, by road, at Yallourn 'W'. The specially converted transport-

er provided by Fleetpress transported the load, with a police escort from Port Melbourne.

Fleetpress described the job as the bulkiest road haulage task they had carried out for the SEC.

The low-loader took two days to transport the load to Yallourn 'W'. The load was seven metres wide, 53 metres long and six metres high.

The Fleetpress rig had hydraulic height control equipment to help it negotiate under bridges and overpasses en route.

Two other large segments, for the turbine, a 207 tonne component and a 57 tonne rotor will be moved to Yallourn by rail.



*The large turbine casing is at the top of picture while the special Fleetpress lowloader is in the foreground.*

(Continued Page 23)





Overburden is carried on the new conveyor system to the overburden dump from No. 13 dredger.



TS3 is pictured busy at work spreading overburden onto the new overburden dump in the southern corner of the Yallourn open cut.

## New overburden system in service

Commissioning of No. 13 dredger has signalled the start of a new overburden system in Yallourn open cut.

As the \$6.5 million dredger went through its testing paces, a new conveyor system and TS 3 overburden stacker came into operation.

The three components, with a total value of almost \$21 million, are combining to supply a new overburden dump on the southern side of the cut.

The dump will spread across the open cut floor at a depth of about 20 metres. The system is designed so that the conveyors, stacker, and consequently the overburden dump, will virtually "follow" No. 13 dredger.

The 1,900 tonne 37 metre high dredger is capable of winning 1,500 cubic metres of overburden an hour.

The Ascom supplied conveyor system, which when completed will include Y301, Y304, Y305, Y306 and Y308 conveyors, cost about \$11 million. It will stretch about 5,370 metres across the cut and have a capacity of 3,600 cubic metres of loose overburden an hour.

The 1.4 metre belt is driven by a series of 500 hp motors. When completed the system will be driven by 11 motors.

The TS 3 stacker, supplied

by Weserhuetten Otto Wolff of Germany, is valued at \$3.3 million.

The 350 tonne stacker, with its 180 tonne tripper is bigger, more flexible and has a greater work capacity than either the two stackers already operating in Morwell and Yallourn open cuts.

The existing Yallourn overburden dump will be completed by the middle of next year. Restoration work has already begun.

At the same time, No. 7 dredger will cease operation as an overburden dredger and transfer to coal winning.

This will leave No. 13 dredger, the new conveyors and TS 3 stacker as the sole overburden system in Yallourn open cut. As the system moves through Yallourn township, the high ground on the western side of the town (Strzelecki Road — Coach Road intersection, Heather Grove shop area) more than 30 metres depth of overburden will have to be removed.

In this area No. 13 dredger will operate on a 10 metre high bench and load the face conveyor through S95 mobile slew conveyor.

This mobile conveyor is at present under construction behind the dredger erection site. It is scheduled to be completed early next year.



No. 13 overburden dredger feeds the overburden onto the new conveyor system in the Yallourn open cut.



# SERVICE REGISTER

**COMMISSION staff and wages employees who reached significant service milestones during December and January are included in the registers below:**

## DECEMBER

**25 YEARS:**  
 Syd Hurrell Morwell Power Station  
 Jim Irvine Morwell Power Station  
 Ian Harris Transmission, Yallourn  
 Richard Shanahan Yallourn Power Station  
 Pat Brodie Yallourn Workshops  
 Charlie Mascari Yallourn Power Station

**30 YEARS:**  
 Alf Clarke Transmission, Yallourn  
 Tom Grubb Transmission, Morwell  
 Bruce Coghlan Yallourn Workshops  
 Don Casey Yallourn Power Station  
 Cyril Dyson Yallourn Workshops  
 Kevin Randall Coal, Yallourn

**31 YEARS:**  
 Lyall Horton Coal, Yallourn  
 Gil McPhee Transmission, Yallourn  
 Hedley Bennett Transmission, Morwell  
 Dave Poole Area Administration, Morwell  
 Tom Oswald Yallourn Workshops  
 Ron Jessup Transmission, Yallourn

**32 YEARS:**  
 Jock Morris Transmission, Yallourn  
 Ray Tate Transmission, Yallourn

**33 YEARS:**  
 Keith Fletcher Morwell Power Station

**35 YEARS:**  
 Bob Stevenson Mechanical Services, Yallourn

**36 YEARS:**  
 Jim Knowles Coal Production Headquarters,  
 Morwell

**37 YEARS:**  
 Vin Walker Morwell Power Station  
 Les Barton Civil Services, Morwell  
 Doug Amos Yallourn Power Station  
 Jim Watkinson Yallourn Power Station  
 Arthur Scott Morwell Workshops  
 Henry Stevens Coal, Yallourn

**38 YEARS:**  
 Fred Richards Coal, Yallourn  
 Ron Douglas Yallourn Power Station

**39 YEARS:**  
 Roy Pryke Civil Services, Yallourn

**40 YEARS:**  
 Charles Bowler Transmission, Yallourn

**41 YEARS:**  
 John Walker Coal, Yallourn  
 Mirros Quirk Transmission, Yallourn

**42 YEARS:**  
 Dudley Sharp Morwell Power Station  
 Col Hower Morwell Power Station

**43 YEARS:**  
 Jim Irving Drafting, Yallourn

**44 YEARS:**  
 John Foote Morwell Power Station  
 Bill Fyfe Coal, Yallourn  
 John Ebsworth Coal, Yallourn  
 Arthur Cooper Coal, Yallourn  
 Ken Crane Stores, Yallourn  
 Bill Martin Yallourn Power Station  
 George Newton Yallourn Workshops

**46 YEARS:**  
 James Scholes Civil Services, Yallourn

## JANUARY

**25 YEARS:**  
 Lionel Parry Yallourn Power Station  
 Keith Griffiths Transmission, Morwell  
 Neil Smith Drafting, Yallourn  
 Barry Warrillow Yallourn 'W' Power Station  
 Eddy Eames Public Relations, Morwell

**30 YEARS:**  
 Keith Taylor Coal, Loy Yang  
 Bob Dunlop Coal, Yallourn  
 Arnold Siinmaa Coal, Yallourn  
 Roy Wardley Morwell Briquetting and  
 Power Installation  
 Tom McKendry Yallourn Power Station  
 Roy Simmons Yalourn Power Station  
 Joe Silainis Coal, Yallourn  
 Stacy Petravskas Coal, Yallourn  
 John Sestokas Coal, Yallourn

**31 YEARS:**  
 Brian Baillie Coal, Yallourn  
 Frank Fletcher Yallourn 'W' Power Station  
 David Davies Coal Production Headquarters,  
 Morwell  
 Harry Hopkins Patrol  
 Coal Production Headquarters,  
 Morwell  
 Joe Kirkup Yallourn Workshops  
 Max Jack Coal, Yallourn  
 Roy Mawby Morwell Power Station  
 Laurie Shipp Drafting, Yallourn  
 Allan Jenner Yallourn Power Station  
 Lee Martin Morwell Briquetting and  
 Power Installation  
 Ken Castell Civil Works, Yallourn  
 Ray Larkins Yallourn Power Station  
 Allan Dell Coal, Yallourn  
 Alec Skinner

**32 YEARS:**  
 Frank Vogel Finance, Morwell  
 Doug Gorrie Hazelwood Power Station  
 Bill Treloar Morwell Briquetting and  
 Power Installation  
 Fred Bathurst Civil Works, Morwell  
 Vic Payne Morwell Power Station  
 Tom Robinson Yalourn 'W' Power Station  
 George Beulke Civil Works, Yallourn  
 George Jamieson Yallourn 'W' Power Station  
 Charlie Pearce Yallourn 'W' Power Station  
 Louis Williams Morwell Power Station  
 Kelvin Bruce Coal, Yallourn  
 Allan Stepnell Yallourn Power Station

**33 YEARS:**  
 Rick Crookes Personnel, Morwell  
 Greg Stuart Coal, Morwell  
 Mat Daly Yallourn Workshops

**34 YEARS:**  
 Roger McMillan Morwell Briquetting and  
 Power Installation  
 Stan Brown Transmission, Yallourn  
 George Botton Yallourn Transport Workshops  
 Bob Baxter Coal, Yallourn

(Continued on Page 23)





## Owendale Welsh pony stud is a thriving business

Training engineer (power generation) Bob Owen doesn't have much trouble keeping occupied in his spare time these days—his Owendale Welsh Mountain Pony stud at Trafalgar East makes sure of that.

In fact, what began as a hobby for Bob and his wife Pauline has flourished into a healthy but time consuming business. Owendale, one of the most pleasing sights for motorists travelling on the Princes Highway between Moe and Trafalgar, is fast earning a reputation as the home of champion Welsh Mountain ponies.

And with good reason — Owendale ponies have won championships at all Royal Melbourne Shows since 1959.



**BOB OWEN**

Their most recent success was with Owendale Helga, crowned supreme champion junior exhibit at the National Horse and Pony Show in Sydney last month.

Pauline is the driving force behind Owendale. She has been associated with horses most of her life, including show jumping, driving trotters — she has even ridden at picnic race meetings.

The Owen's interest in Welsh Mountain Ponies began when they lived at Newborough. The hobby developed and when they found they needed more room they managed to lease the old SEC stables at Yallourn. At one stage they had about 100 horses at Yallourn — including race-horses and draught horses, as well as the ponies.

Four years ago they began developing the 13 hectare Owendale stud, where they run about 60 horses including 15 imported Welsh Mountain Ponies — four of them stallions.

(Continued on Page 23)

*The Owendale Pony Stud is one of the most picturesque farms along the Princes Highway between Morwell and Melbourne.*



*It was feeding time when CONTACT's photographer Jack Hinshelwood called at Owendale. Pauline Owen and her son Darrell are pictured feeding the horses.*



*A mare and her foal receive some attention and affection from Pauline Owen.*





# Christmas picnic a success

More than 100 people attended the Yallourn main office social club's Christmas picnic at the Cowwarr Weir on November 27.

It was the second consecutive year the Social Club has held its picnic at the Weir.

Held in ideal weather conditions several novelty events were held for the adults and children including, an egg and spoon race, three legged race, potato bag race and a gumboot throwing competition.

Winner of the gumboot-throwing competition was Yvonne Aplin, wife of Draftsman Brian Aplin. The veteran race for men over 30 years was won in fine style by Ron Sincich.

Highlight of the picnic was the arrival of Santa Claus at 3 p.m. Santa distributed lollies and gifts to all children.



Highlight of the Christmas picnic was the arrival of Santa Claus. He gave gifts to all children.



Taking a breather from the afternoon's activities at the Christmas picnic were Phil Lowe and his son Christopher.

A picnic wouldn't be complete without a sack race . . . and the children enjoyed every minute of it.



Although the field was small the competition was strong in the married women's race.





# Excavation work on No3 clayhole is underway

Work is well underway on excavation of No. 3 clayhole in Morwell open cut.

Dragline 120B/3, transferred earlier this year from Yallourn North Extension, is being used to dig out the hole.

The clayhole is a burn hole in the coal which has filled with clay.

Most of the clay was excavated by overburden dredger No. 10, but there is still 180,000 cubic metres remaining below overburden level.

Volvo trucks are carting the clay to the northern batters where it is being spread to increase fire protection.

The dragline is being used instead of overburden dredgers No. 10 or No. 11 so that the overburden face will continue advancing while the excavation project is underway.

When possible No. 11 dredger will be used as part of its normal overburden excavation program.



The former Yallourn North extension dragline is pictured digging at the clayhole site in the Morwell open cut.



The electrically driven dragline has been digging the clayhole out for more than two months.



## Unusual visitor

MORWELL overburden dump workers played host to an unusual visitor early this month.

Workmen were making a routine inspection near the stacker dump on December 1 when they spotted a koala trying unsuccessfully to climb a conveyor support structure.

It is believed to be the first koala seen in

the area.

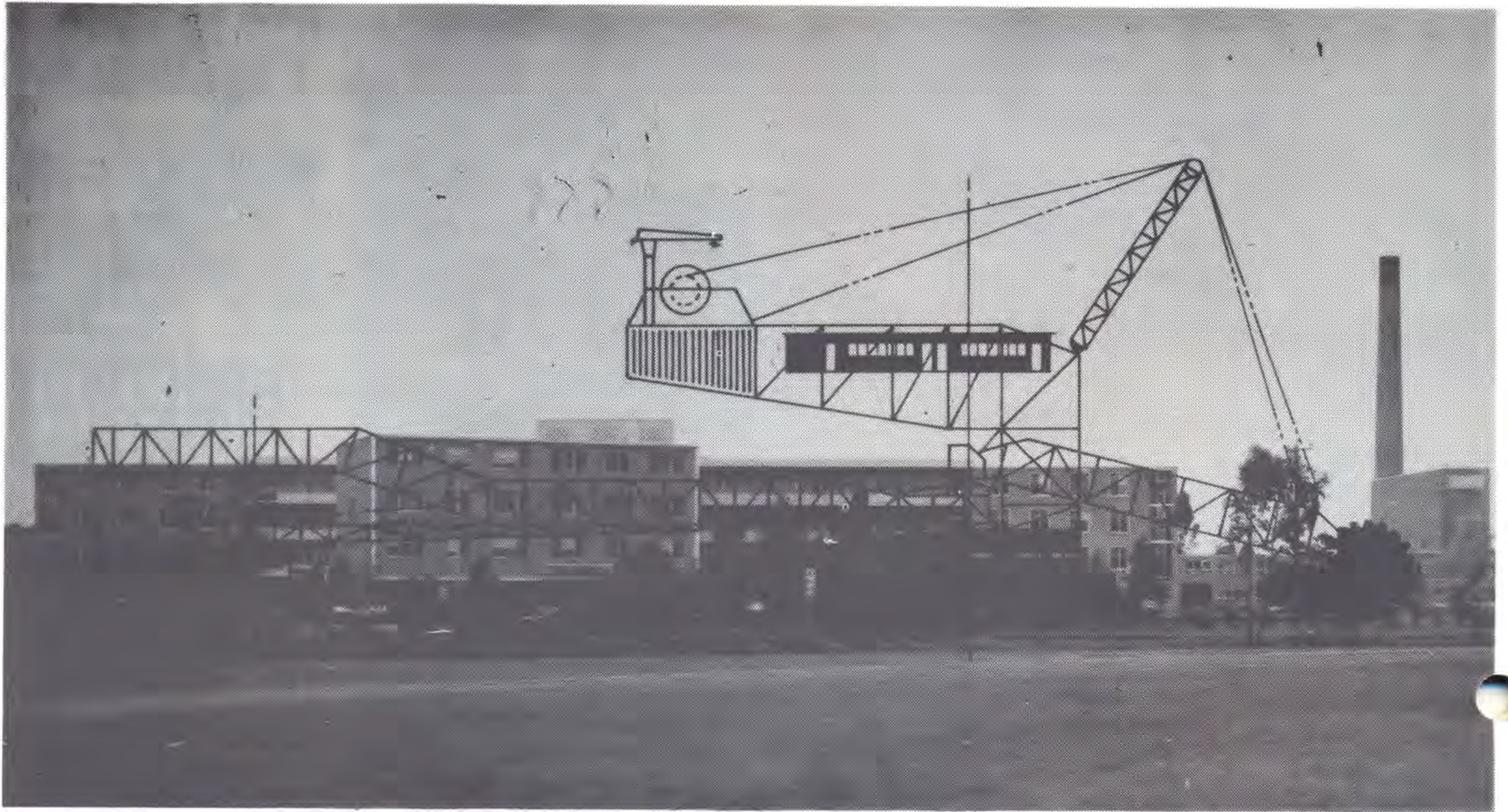
Overburden operations supervisor Roy Campbell said the koala was up to its ears in mud when found.

Roy later chauffeured the furry visitor to Billy's Creek where it checked out the local gum trees, found one to its liking and settled in for a good feed.



Supervisor Roy Campbell displays the koala which was found on the Morwell overburden dump.





The Central Gippsland Hospital at Traralgon is dwarfed by this artist's drawing to scale, of No. 14 dredger which will be the first dredger to be built for the Loy Yang project.

## LOY YANG IS ON THE MOVE

Things are really starting to move on the SEC's huge Loy Yang project.

Several construction projects are underway and more are scheduled to begin soon.

There are now about 200 men on site and an extensive lighting system has been introduced to allow shift work.

Mecho Constructions Pty. Ltd. has completed construction of the raw coal bunker bench (measuring 150 metres x 50 metres) and hopes to have the new Bartons Lane open to traffic by the end of the year.

Mecho is at present also involved in work on main drainage and settling pond projects.

Leighton Contractors Pty. Ltd. has started on the preparation of the power station bench and associated road and drainage work. Excavation required for the Bartons Lane overpass across the overburden conveyors is complete and work has begun on the preparation of foundations.

Earthworks are also underway at the dredger and

stacker erection site, the open cut site, coal production area, coal conveyor outlet from the open cut and the embankment for the overburden conveyor.

This work has consisted mainly of stripping of top soil. Minister for Minerals and Energy, Mr. Jim Balfour has announced the SEC will spend a massive \$286 million on two contracts for the power station.

Under the biggest single contract ever issued by the SEC and one of the largest of its type in Australian financial history. International Combustion Australia Limited will receive in excess of \$238 million for the supply and installation of four 500 MW boilers and associated equipment.

The second major contract, valued at more than \$48 million, is to be awarded to Siemens Industries Limited for the supply and installation of three 500 MW turbo-generators and associated plant and equipment.



Large scrapers are a common site at Loy Yang. Many of the scrapers are working 22 hours a day.



Scrapers and bulldozers are currently working on the earth works for the Loy Yang power station.



## Inquiry to choose site — Gas turbine

Full details of several alternatives will be given to the Parliamentary Public Works Committee inquiry into an SEC proposal to construct an additional 200 MW gas turbine station.

The inquiry, which was announced by the Government on November 29, will examine all aspects of the proposal and report to the Government as a matter of urgency.

SEC Assistant General Manager (Development), Mr. Jack Johnson, said that the SEC had made preliminary assessments of a number of sites already.

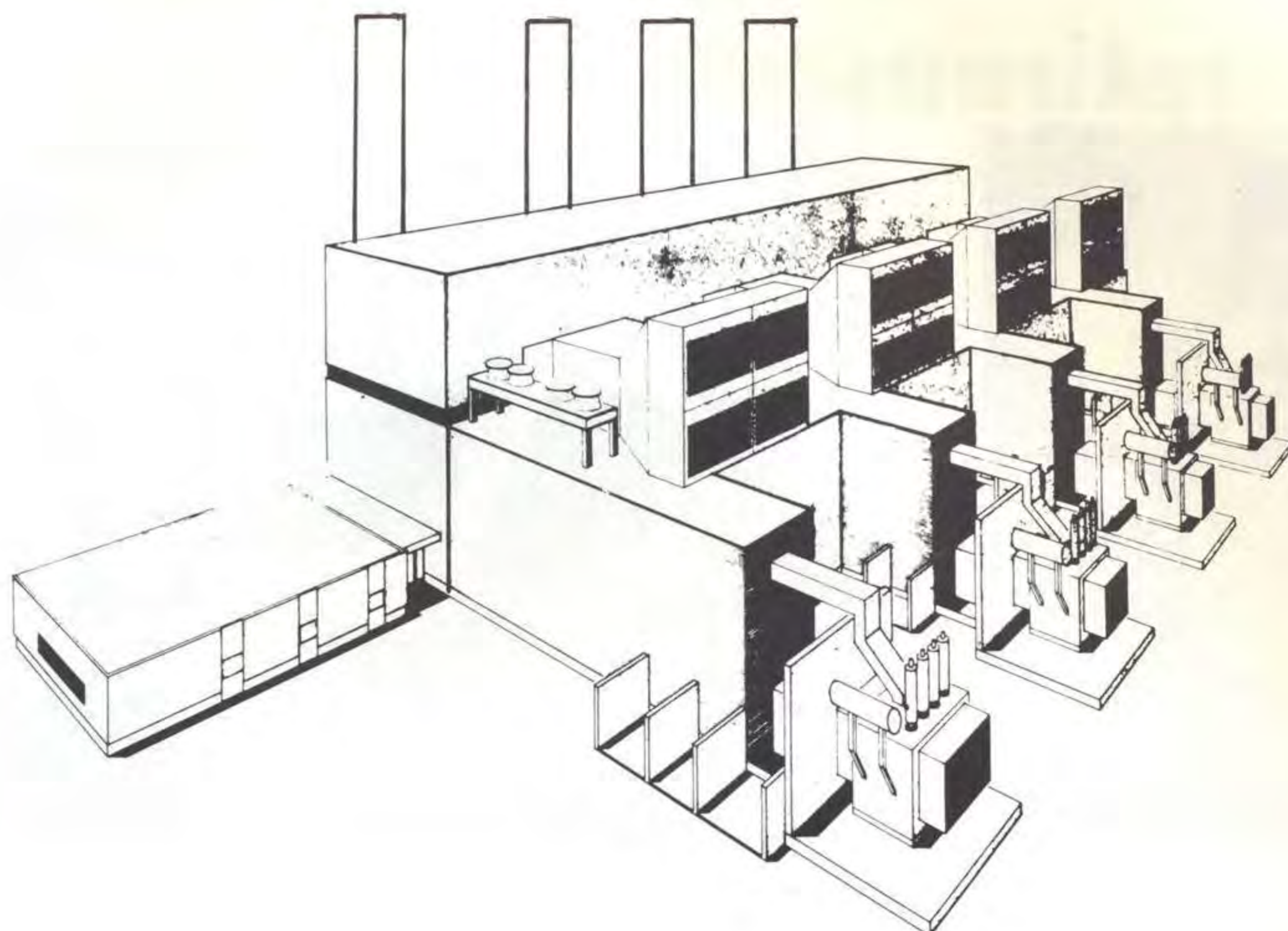
"We have looked at perhaps 10 or 15 sites in various parts of Victoria which are accessible to gas supply," Mr. Johnson said.

"We will probably submit detailed evidence on three or four of the most technically, environmentally and economically appropriate sites.

"We believe that the station is vitally necessary as an aid to avoiding serious power shortages in the future.

"We are always prepared to have our projects submitted for public scrutiny and we will, of course, abide by whatever decision is reached by the Government.

"The main thing is for us to ensure that all of the realistic alternatives are considered and a decision made quickly enough for the station to be built in time to help with the critical years ahead," Mr. Johnson said.



JEERALANG GAS TURBINE STATION

Above: An architect's drawing of the Jeeralang gas turbine station.

## EPA issues licence for gas turbine station in LV

The Environment Protection Authority, through its local agent, the Latrobe Valley Water and Sewerage Board, has issued the SEC with a licence for the 200 MW Jeeralang Gas Turbine Station at Bond's Lane, south of Morwell.

The licence was issued by the LVW & SB on November 18. The Minister for Minerals and Energy, Mr. Balfour, said that in issuing the licence, the Board had set out various conditions with which the SEC would have to comply.

He said that the new station was vital if power short-

ages were to be minimised in the future.

"The type of plant proposed for the Jeeralang station is the only equipment which can be purchased and installed sufficiently quickly to help in the critical years.

Mr. Balfour said he also wanted to comment on rumors that the Jeeralang station would be expanded to 400 MW.

"I want to state quite definitely that no decision has yet been made on the siting of the additional 200 MW station which is now

required," he said.

"Jeeralang has certainly been one of the sites considered, but a number of other sites between Longford and Geelong are under investigation.

"While some sites seem impracticable, several alternatives inside and outside the general area of the Latrobe Valley are still being looked at.

"A final decision on the siting of the second 200 MW gas turbine station is unlikely to be made for some time yet," Mr. Balfour said.

## Two new stages for Newark Ave.

The SEC is negotiating with the Housing Commission for the addition of a further two stages (stages 7 and 8) to the Newark Avenue housing estate in Newborough.

The two extra stages will provide 20 single bedroom units in the southern corner

of the six hectare site, bringing the total to 82 units capable of housing a least 106 former Yallourn residents. Work on stages 7 and 8 is expected to be completed during 1978-79.

The units will be of similar design to those in stages 2 and 4, which are currently

under construction.

Work on stage 2, involving construction of 10 single bedroom units at a total cost of \$230,000, is more than 35 per cent complete, while work on ten two-bedroom and ten single bedroom units in the third and

fourth stages has already begun.

The flats, designed by the Housing Commission, are part of overall SEC plans to provide alternative accommodation for retired couples and widows.



# retirements



**LEO LAZARUS**

Leo Lazarus, who retired from the Commission on November 2, spent almost 40 years of his 47 years service at the old Yallourn briquette factory.

Leo began as a lad laborer with Coal Division, Yallourn, in September, 1930. After a three-year apprenticeship at the Yallourn briquette factory he was employed at the factory as an electric plant attendant, fireman, electric press driver, greaser and finally a form setter.

When the factory closed Leo transferred to Coal Production, Yallourn, as a trades assistant, the position from which he retired.

Leo and his wife Eileen, who have lived at Yallourn for 37 years, have relocated a Yallourn house in Southwell Avenue, Newborough, and are in the process of refurbishing it and laying out the garden. They hope to move in early next year.

Both are keen members of Yallourn Bowling Club, and they hope to have a touring holiday in New Zealand.

At a lunch at the Yallourn Hotel, Yallourn open cut Coal Production Superintendent Col Ferguson presented Leo with a gold watch, electric saw and drill, a pewter tankard and a voucher.



**FRANK SANDERS**

Frank and Miriam Sanders hope to take an overseas holiday following Frank's retirement from the Commission on September 29.

Frank began with the Commission in January, 1941 as a laborer with construction. During his 36½ years service he worked

through a number of classifications with Central Workshops, Yallourn to Coal Production, Morwell until he was appointed Leading Hand patrolman, the position from which he retired.

Frank plans to continue living in Morwell where he will spend most of his time in his garden and enjoying an occasional fishing trip.

He and his wife also hope to do some touring.

At an informal farewell function in the Morwell training centre Acting Coal Production Superintendent Bob Lethlean presented Frank with an electric deep fry cooker, a fishing rod, reel and tackle and a lawn trimmer.



**COL MURDOCH**

After 41 years service with the Commission Col Murdoch called it a day on September 21.

Col began with the Commission in January, 1936 as a lad laborer at the extension yard at Yallourn. In September, 1936 he started his long association with the briquette industry when he was transferred to the Yallourn briquette works. He then progressed through the classifications of cleaner, launder attendant, greaser, and assistant electrical mechanic. In January, 1947 Col was promoted to yard supervisor, Fuel Supply, Yallourn and then to assistant officer.

In 1960 he was promoted to Senior Consigning Officer. Col was transferred to Morwell as senior consigning officer in 1967, the position he retired from.

In retirement Col and his wife Rene plan to enjoy their hobbies of gardening and their grand-children at their Newborough home.

Col received a wallet and notes from Manager Power Generation Jack Robertson and Mrs. Murdoch a sheaf of flowers from Col's workmates at an informal farewell.



**PAUL TABONE**

Paul Tabone retired from the Commission on November 24 after more than 27 years service.

Beginning as a laborer in May, 1950, Paul worked 20 years with Yallourn Open Cut and the past seven years with Power Generation Department.

He worked his way through several classifications until he was appointed leading hand operator, the position from which he retired.

Paul and his wife Mary, who live at Yallourn North, plan to visit Malta early next year.

Paul's sons Frank, Joe, Paul and Nino, and son-in-law Fred, who all worked with the Commission, were among those who attended an informal farewell function at Yallourn coal production control centre. Acting Assistant Yallourn 'W' Power Station Superintendent Noel Shears presented Paul with a suitcase, binoculars and a lamp.



# Bushfire safety and survival

(Continued from Page 8)

but avoid elevated water tanks.

Do not delay in front of flames when it is absolutely necessary to enter them in order to escape, but having covered all exposed skin as best as you can, move briskly through onto the burn. Choose the path that is least obstructed by vegetation, logs, etc.

Do not enter flames that are more than about five feet high or that are tending to enter the tree tops.

If it is possible to break through the flames, select a spot which is most suitable for lying low until the worst part of the fire has passed. Choose a position that is naturally barer of vegetation, and if possible, one that affords some shelter such as creek bed, road drain, large rocks or logs.

If there is time, improve the survival spot by lighting up vegetation in the face of the fire, or by improving the shelter with hand tools.

Lie face downwards and as low as you can, taking care to protect the body as much as possible with whatever material that may be at hand.

Even a covering of dirt or sand will help. Remain in this position until the main fire has passed, then move quickly back through the

burnt area.

Protect your lungs by holding a wet handkerchief or pad over the nose and mouth. Near the fire front, ensure that as much of the body as possible is covered to minimise the effects of heat radiation.

The best dress for the fire fighters is a safety helmet, long-sleeved shirt of a sturdy woollen or cotton material, long trousers of an equally strong material, and heavy boots — preferably with rubber soles to afford better grip in the dry forest.

## ● FOR THOSE WITH VEHICLES

As far as possible, avoid dangerous situations. Do not drive down steep or unknown roads and tracks — get information beforehand.

Keep windows up in smoke, switch on lights avoid high speeds. Sound the horn occasionally.

Park vehicles well clear of the fire, preferably in large, open clearings. Do not block roads or tracks.

Park vehicles so that they are facing outwards in the direction of escape. Wind up the windows and leave unlocked with the ignition key left in place.

If trapped with a vehicle, park in the clearest area available in a position furthest from the approaching fire.

## \$6.8 MILLION CLEAN AIR PROGRAM UNDERWAY

(Continued from Page 14)

of the SEC's four Latrobe Valley Power Stations.

Mr. Robertson, said that the SEC had a genuine concern for the environment in all areas of its operations.

"Since the early 1960's, we have spent or undertaken to spend about \$28 million on emission control equipment in our Latrobe

Valley power stations," he said.

He said highly efficient dust collecting equipment would be incorporated in the future Loy Yang Power Stations, near Traralgon, to ensure that emissions from their chimneys would be effectively controlled.

The first Loy Yang unit is due to come into operation in 1983.

## SERVICE REGISTER

(Continued from Page 16)

### 35 YEARS:

Jack Embry  
Arthur Hamilton  
Laurie Dalglish

Coal, Morwell  
Morwell Briquetting and  
Power Installation  
Yallourn Workshops

### 36 YEARS:

Russell Humphries  
Brian Clark  
Wally Andrews  
Brian Downey

Yallourn Transport Workshops  
Transmission, Yallourn  
Transmission, Yallourn  
Yallourn 'W' Power Station

### 37 YEARS:

Ewan Cameron  
Vic Robinson  
Roy Risk  
Ray Cordell  
Syd Redman  
John Watt  
Rex Frost  
Max Maddern  
Tom O'Neill

Civil Works, Yallourn  
Civil Works, Yallourn  
Coal, Yallourn  
Drawing Office, Yallourn  
Coal, Yallourn  
Materials and Services, Morwell  
Transmission, Yallourn  
Finance, Morwell  
Coal, Morwell

### 38 YEARS:

Ralph Wicks  
Arthur Brogan  
Syd Squires

Hazelwood Power Station  
Transmission, Morwell  
Hazelwood Power Station

### 39 YEARS:

John Duxbury  
Bob Lock  
Bert Forbes  
Allan Lofts

Yallourn Power Station  
Coal, Yallourn  
Morwell Workshops  
Transmission, Morwell

### 40 YEARS:

Norm McGuinness  
Joe Metcalf

Yallourn Power Station  
Yallourn Workshops

### 41 YEARS:

Kevin Watts

Yallourn Workshops

### 42 YEARS:

Laurie Baker  
Bill Kerr

Coal, Yallourn  
Yallourn Power Station

### 43 YEARS:

Brian Collier

Personnel, Morwell

### 44 YEARS:

Jock McKean

Morwell Briquetting and  
Power Installation

### 45 YEARS:

Bill Godfrey

Yallourn Power Station

## OWENDALE PONY STUD

(Continued from Page 17)

Bob said Owendale produces about 20 pure bred ponies a year. Customers, from all over Australia, are mainly breeders or people who plan to show the ponies.

He is a past president of the Welsh Pony and Cob Society of Australia and at present is a committee member, along with his son Darrell.

Apart from horses Owendale boasts a wide range of other livestock — a flock of black sheep, a donkey, a Clydesdale, a goat and cockatoo. There are also three thoroughbred race-horses on the property.

Bob admits the stud has grown out of the hobby category to a business that requires a great deal of work by his wife and son — not to mention Bob himself.



# valley visitors

## Airport chaplains enjoyed tour of SEC works area

Among the hundreds of visitors to tour the SEC's Morwell and Yallourn works area during the month was a party of 25 airport chaplains from the International Civil Aviation Chaplaincy.

The party included Chaplains from Belgium, Canada, Germany and England. SEC's ITIM Chaplains Rev's Bruce Burn and Charles Dodd accompanied the party.

Their tour included the

Morwell open cut, Hazelwood power station and Latrobe Valley Control Centre.

Other visitors included, a party of four from the Electric Power Development Company of Japan. Mr. T. Kimura led the party.

Following discussions with senior Coal Production personnel, the party toured the Morwell and Yallourn open cuts.

Mr. Teppo Hyttinen the Director of Purchasing for the Imatran Voima Osakeyhtio Company of Finland took in a day tour of the SEC and held talks with Manager Power Generation Jack Robertson and Manager Area Administration George Bates.

More than 40 members of the Sydney Bowling Club toured the Morwell and Yallourn works area early this month and then played a competitive game against Yallourn Bowling Club.



Enjoying a cup of tea at the Latrobe Valley visitors centre Morwell, are a group of Industrial Chaplains.



Above: Studying a booklet on brown coal, are three representatives from Electric Power Development Company of Japan and Coal Production Superintendent Headquarters Murray MacRae (third from left).



Pictured during a break in their match with Yallourn bowlers are some of the Sydney bowling club members.