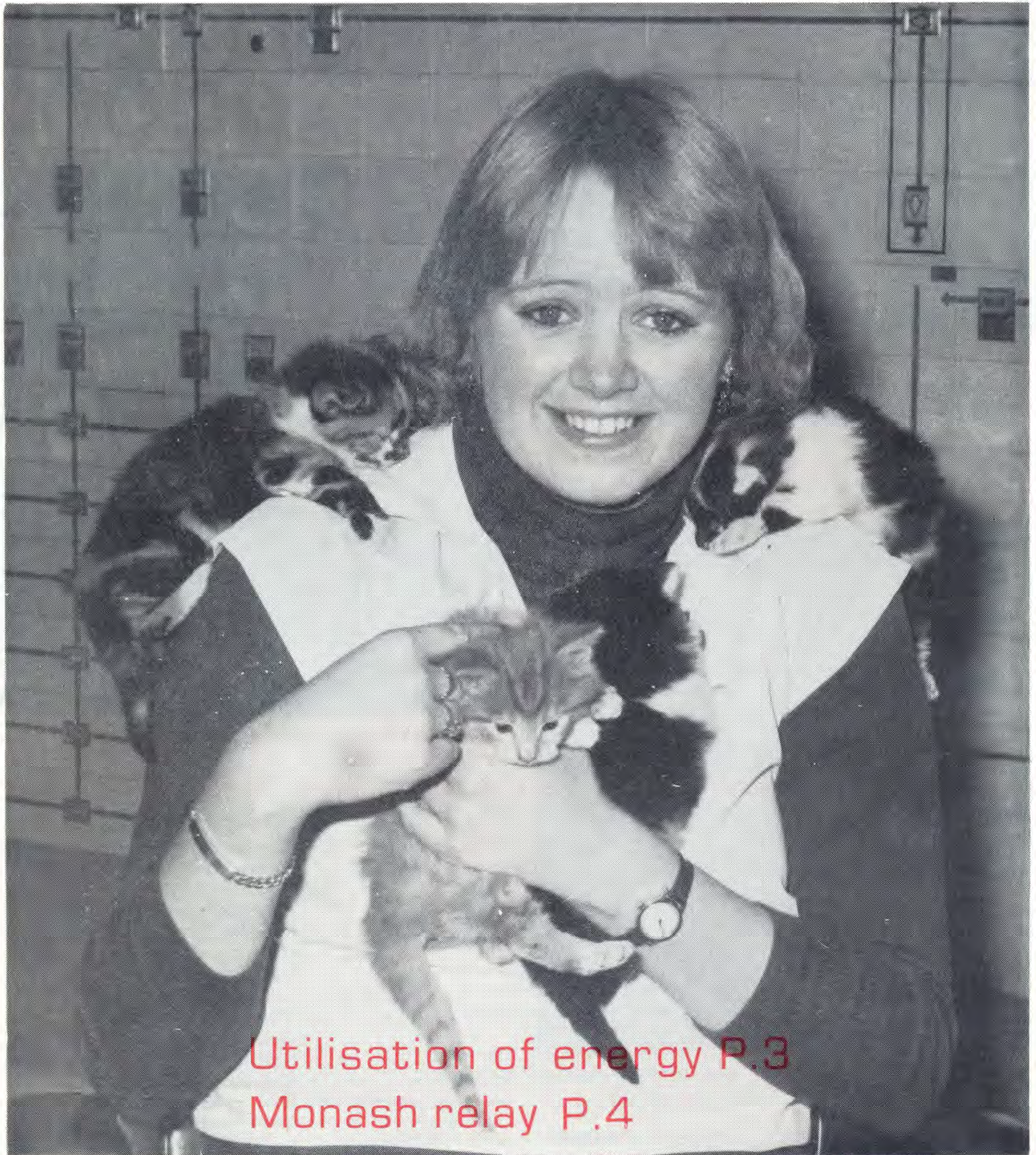




CONTACT

JUNE, 1979



Utilisation of energy P.3
Monash relay P.4



Another successful mannequin parade

A wide range of fashions went on display at a successful mannequin parade in the Morwell Bowling Club and Recreation Centre on May 25.

Organiser Mrs. Carmel Carter (MBPI canteen) was gratified at the excellent response to an entertaining evening, which is now an annual event.

Conducted by the Morwell Power Station and Briquette Factory Social Club, the function attracted more than 100 wives and friends of social club members.

Following the parade, well-known Melbourne performer Ron Blaskett and "friend" Jerry Gee provided plenty of entertainment.

Left: Modelling two items in the wide range of lingerie at the mannequin parade are (from left) Trisha Gilbert and Annette Mahony.



Children's lingerie was modelled by cute Kim Alcock (left) and Megan Darby.

Letter to Editor

Dear Sir,

I do not know if it is usual to write and say thank you re resettlement.

I am very happy and thankful with what is provided (at Newark Avenue units) and I am sure other Yallourn folk must be.

We must naturally miss Yallourn, but fully realise future plans for the area have made this move essential.

I am delighted with my nice unit and appreciate the kindness and help given by the SEC resettlement people in Yallourn.

Yours sincerely
Mrs Patricia Grant.

Contact



Prepared by the L.V. Public Relations Group for Operations Group employees.

WHOLLY SET UP AND PRINTED BY GIPPSLAND PRINTERS PTY. LTD. — MORWELL.

Cover

SHARON Prior, who has just completed a 17-week period of work with the Commission under the Special Youth Employment Training Scheme, loves cats. . . . and these four kittens she befriended at the Morwell open cut control centre are no exception. However, she can't look after them all, and Lena Celima (Ext. 3392) would be glad to hear from any prospective "foster parents".

Inside

Mannequin Parade	2
Energy Utilisation	3
Last Monash Relay	4
They don't come much bigger	5
New Red Cross/St. John Centre ...	6
Loy Yang — progress	7
Engineering Services	8
Yallourn coal seam at Morwell	9
Transmission Operations	10
Power Generation	11
Coal Production	12
Area Administration	13
Service Register	14
Retirements	15
Valley Visitors	16

ASBESTOS EDUCATION PROGRAM

AN ASBESTOS education program for Operations Group employees will begin within the next month.

Introduction of a program of information sessions was one of the key recommendations made by the joint Commission-employee asbestos task force in its interim report handed down this month.

The task force report, which followed seven weeks of extensive inspections and discussions, contains 18 recommendations designed to achieve the containment or replacement of all asbestos applications within the Operations Group no later than December 1980.

Assistant General Manager (Operations) Clem Joyce has indicated the report will form the basis of Operations Group policy.

He has congratulated task force members on their involvement in the preparation of a "practical and comprehensive report".

Task force members are - Deputy Personnel Officer Area Admin. John Drewett (Chairman); Departmental Chemist Power Gen. John Lawson; Occupational Hygienist Personnel Development and Services Leo Ruschena; employee representatives Ross Simpson (Staff), Jerry Clark (Wages operation) and George Wragg and Alf Hankin (Wages maintenance).

They believe their report has set the guidelines for the replacement or containment of asbestos and that it is now up to all employees to ensure recommendations are implemented.

The education program will involve a series of information sessions for all Operations Group employees, with each session relating to the particular asbestos working conditions likely to be experienced by each group.

An audio visual presentation is being prepared for use in the information sessions.

In addition, a booklet outlining the hazards and control of

asbestos will be prepared for issue to all employees.

Other task force recommendations cover such areas as work procedures, job classification and recording, appointment of coordinating officers in certain locations, medical surveillance, supply of monitoring and protective equipment, and asbestos disposal procedures.

The report has been distributed throughout Operations Group departments and to all Latrobe Valley unions.

The task force will reconvene in September and subsequently at three monthly intervals to monitor progress of all programs.

Utilisation of energy - community responsible

The SEC regards the wise use of energy as one of the most vital tasks facing industry and the community today.

We all have a responsibility to see that energy is used to the best advantage, and for the SEC, that means encouraging people to replace inefficient plant and to avoid wastage.

This is the key aim of the SEC's Energy Utilisation Centre in Caulfield, Melbourne.

Groups of Latrobe Valley employees have been visiting the centre over the past month, having lectures and demonstrations at the centre on electric induction and other ways of utilising energy.

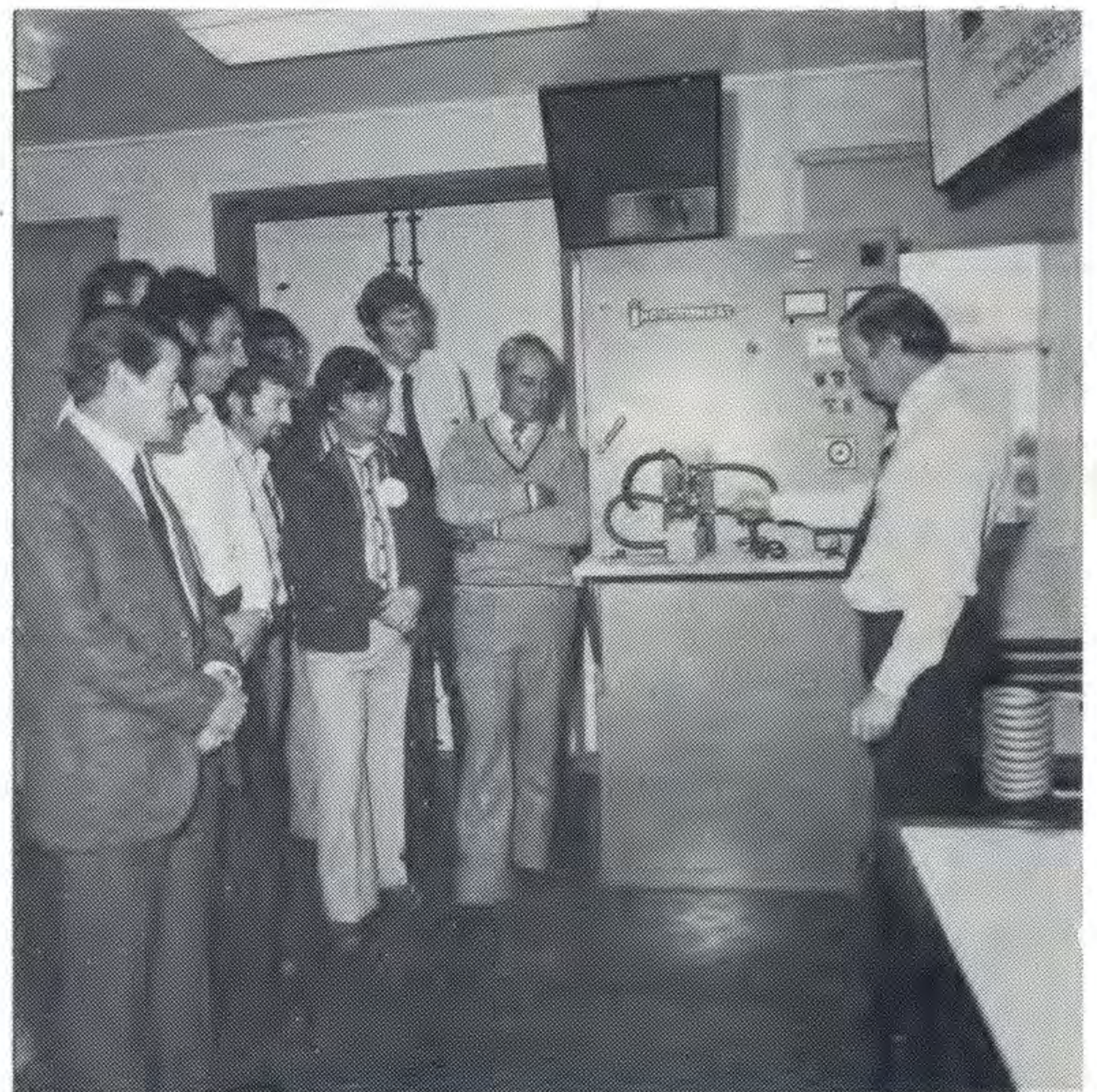
The advent of electric induction heating is leading to changes in the metal founding and smelting industries.

This remarkable method of heating and melting metals is making life a lot more pleasant for people working in these industries.

It's also saving valuable process time and slashing energy wastes in many of the more conventional processes.

As an example of the efficiency of induction heating, a 2.5 x 25 centimetre steel bar or billet can be heated from room temperature to forging temperature (red hot) in 20 seconds.

(Continued on page 14)



This group of Latrobe Valley employees was one of a number which has visited the Energy Utilisation Centre at Caulfield.



The victorious Yallourn/Newborough Amateur Athletic Club team posed for their team photograph before celebrating their win.

DALE (right) and Mark Collings complete their section of the Monash relay in Yallourn.



It's taken 25 years to win

It's taken 25 years, but at last the Yallourn-Newborough Amateur Athletic Club has won an annual Monash relay run.

The club created history by winning the 9.6 mile relay for the first time last month in what could be the final run.

Yallourn-Newborough won by one minute 25 seconds from 1978 winners, Oakleigh, with Morwell a further 32 seconds away in third place.

Five of the nine team members are SEC employees and another two, Mark and Dale Collings, are sons of Occupational Health Officer Vern Collings.

Team members were; Roger Sagar (Yallourn Workshops), Jim Willis (Records, Morwell), Mike Larkin (Electrical Fitter, Melbourne), John Eyre (Metallurgy, Yallourn), John Duck, Mark Collings, Colin Donald, Allan Ashmore (Hazelwood power station) and Dale Collings.

The relay, which is run in Yallourn, began and ended in the town square. Each runner completed a 1.2-mile section.

Yallourn Town Advisory Council member Jack Vines presented the 'Live Wire' perpetual trophy to Allan Ashmore.

FOR SALE

4½ HECTARES unspoilt bushland; natural flora and fauna; substantial deposit of peat; 3 prime building sites with easy access main road; school bus; SEC power; good development potential for water supply; 6 mins. drive from Loy Yang. Outside IDO. Inquiries should be directed to the Editor, Contact 3228.

"THINKING OF TRAVEL" TURN TO PAGE 9

SEC supervisor John O'Geary (left) and Theiss foreman Ken Gillespie are dwarfed by the huge Cat-apillar D10 bulldozer. It is the biggest bulldozer of its type in the world.



SAUNA SAIL

— 1500
ENTRIES

More than 1500 entries were received for the 13th annual Latrobe Valley Yacht Club's three day Sauna Sail on the Hazelwood Pondage on June 16, 17 and 18.

The largest entry was on Sunday afternoon when 412 yachts competed, only five short of the record.

Excellent weather conditions prevailed for the world famous race. No Latrobe Valley yachtsmen were successful in the Champion of Champions events although locals did win a number of events during the weekend.

There were 82 different types of yachts sailed in the Sauna Sail.



THEY DON'T COME MUCH BIGGER

The world's biggest bulldozer is currently working at Loy Yang.

The \$520,000 Cat D10 dozer is owned by Theiss Bros. who have the \$10.2 million contract for construction of ash pond and fire services reservoir where the dozer, nicknamed "Lady", is working.

Other bulldozers at Loy Yang are only matchbox toys by comparison with the huge 85-tonne "Lady".

"Lady", the first D10 after the original prototype, can push or rip 75 per cent

more dirt at a time than the next biggest, the D9.

Powered by a V12 diesel engine, she puts out 700 horsepower and can push 32 yards of dirt straight or 38 yards heaped. More than 20 feet high, "Lady" has a 10 feet tall blade.

Art festival entries close

Entries for the 1979 Monash House Social Club Arts Festival close on Monday, July 2.

The festival opens on July 30 and continues until August 10.

Entry forms and conditions of entry are available from Alec Wood, Public Relations, Morwell Ext. 3244.

Entries must be the original work of SEC employees throughout the Latrobe Valley and the State, or of their immediate families, or of retired SEC employees. Entrants must be over the age of 15.

Completed forms must reach Alec Wood by July 2. Slides must be submitted by the same date, with entry forms.

July 2

All other entries must be hand delivered on Friday July 27, to the 1st floor, Monash House. Late entries will not be accepted.

The festival is held annually and consists of an exhibition of paintings and craft, sculpture and photography. This year, the SEC choir will perform "The Mikado" and there will also be organ recitals, guitar playing, karate demonstrations and films produced by SEC employees.

• *Theiss Bros have contracts at Loy Yang worth more than \$28 million. They include the power station storage area and car parks, pipeline installation and the 'A' power station chimneys.*

FOR SALE

12' caravan. Aluminium/Bondwood. Excellent Condition — newly renovated. Only requires refrigerator. \$700.



Speedway Saloon. E.H. Excellent condition. Ready to race. COMPLETE WITH "Dog" Trailer, spare motor and tyres. Genuine bargain \$750 lot. Both ONO. Phone: (051) 27 4309.

FOR SALE

Kestrel Class trailer-sailer complete with steel trailer, 7½ horsepower Honda outboard, life jackets, radio, anchors and ropes. \$5,000 ONO.

CONTACT: David Barclay (059) 89 5937 or Maree Peters, Ext. 2345.

New Red Cross / St. John Centre creates history

SEC Manager Area Administration George Bates (far right) officially opens the new Yallourn-Newborough Red Cross and St. John Centre in Newborough. Also pictured are (from left) The Chairman of the Victorian Division of Red Cross Mr. A. Stewart, Miss Stevenson, Red Cross, Melbourne and Mrs. Davenport, St. John Ambulance.

The new \$37,000 Yallourn/Newborough Red Cross and St. John Centre at Newborough is one of the most modern centres in Victoria . . . and it has created history.

It's the first time Red Cross and St. John have combined to use the same centre as their base.

Opening the centre, Manager Area Administration, George Bates said the independent arbitrator's decision to allocate funds for the re-

establishment of the Yallourn-Newborough centre illustrated the vital role played by Red Cross and the St. John Brigade in community affairs.

He said the Commission's overall contribution was money well spent and would bring rich dividend to people from all walks of life in the Yallourn and Newborough areas.

"It will also provide a solid foundation for even greater support of the two organisations.

Victorian Red Cross Division Chairman Mr. A.W. Stewart said co-operation between the SEC, St. John and Red Cross at local and State levels led to provision of the Centre.

Mr. Stewart made special mention of the efforts of Sid and Alice Holland, who played a major part in rebuilding the centre, along with Ken and Eileen Jean, key organisers of the project.

SEC CAREER EXHIBITION

The SEC's annual career exhibition will be held in the Morwell town hall from July 10 to 13.

Detailed displays will be on show from 9 a.m. to 5 p.m. on July 10 and 11 and from 9 a.m. to 9 p.m. on July 12 and 13.

The exhibition will be open to the public. Further inquiries contact Graeme Berryman Ext. 2162.



Latrobe Valley dart c'ships

SEC Latrobe Valley darts championships will be held on September 29 and October 6.

The championships, conducted by the Association of

DON'T FORGET

The annual Transmission Shield football match will be conducted on Sunday July 15 at the Yinnar football oval.

The match will be between the Transmission Social Club and Tests and Communications teams.

SEC Social Clubs, will be at the Morwell Bowling Club Recreation Centre.

Teams doubles will be conducted on Saturday, September 29, and singles on Saturday, October 6.

The championships are open to all SEC personnel (male and female) at 50 cents an entry.

Forms are available from SEC Social Club secretaries and canteens.

Entries close on September 10, 1979.

ANNUAL SEC BALL

will be held in
KERNOT HALL, YALLOURN
on
FRIDAY, AUGUST 10

(Includes Smorgasbord.)
and drinks)
Scammell's Band will
provide music.

Limited tables are available

For bookings, contact Alec Wood,
Ext. 3244

BOOKINGS NOW OPEN



LOY YANG 'A' power station's lift well is growing daily towards its eventual height of 115 metres. Steel construction of the power station is also moving ahead in leaps and bounds.

How time has flown

FIRST LOY YANG SOD TURNED TWO YEARS AGO

It has been almost 2½ years since the first sod was turned (February 1977) on the SEC's \$2000 million Loy Yang Project.

Major earthworks are now nearing completion and several of the major structural works are well under way.

The 155 metre high Loy Yang 'A' power station lift well is now more than half completed, structural steel is heading skyward for the 'A' power station and work on the 100,000 tonne capacity raw coal bunker is progressing steadily.

Foundations for the first of the two 260 metre high chimneys are completed. Work will begin soon on construction of the first concrete shell, which will be 25 metres in diameter and 19 metres at the top.

Each shell will contain four 5.5 metre diameter steel flues.

The first two chimneys for 'A' station will cost more than \$14 million.

Initial earthworks for the open cut and the overburden dump are almost completed, with the erection sites for the dredgers and overburden stacker established.

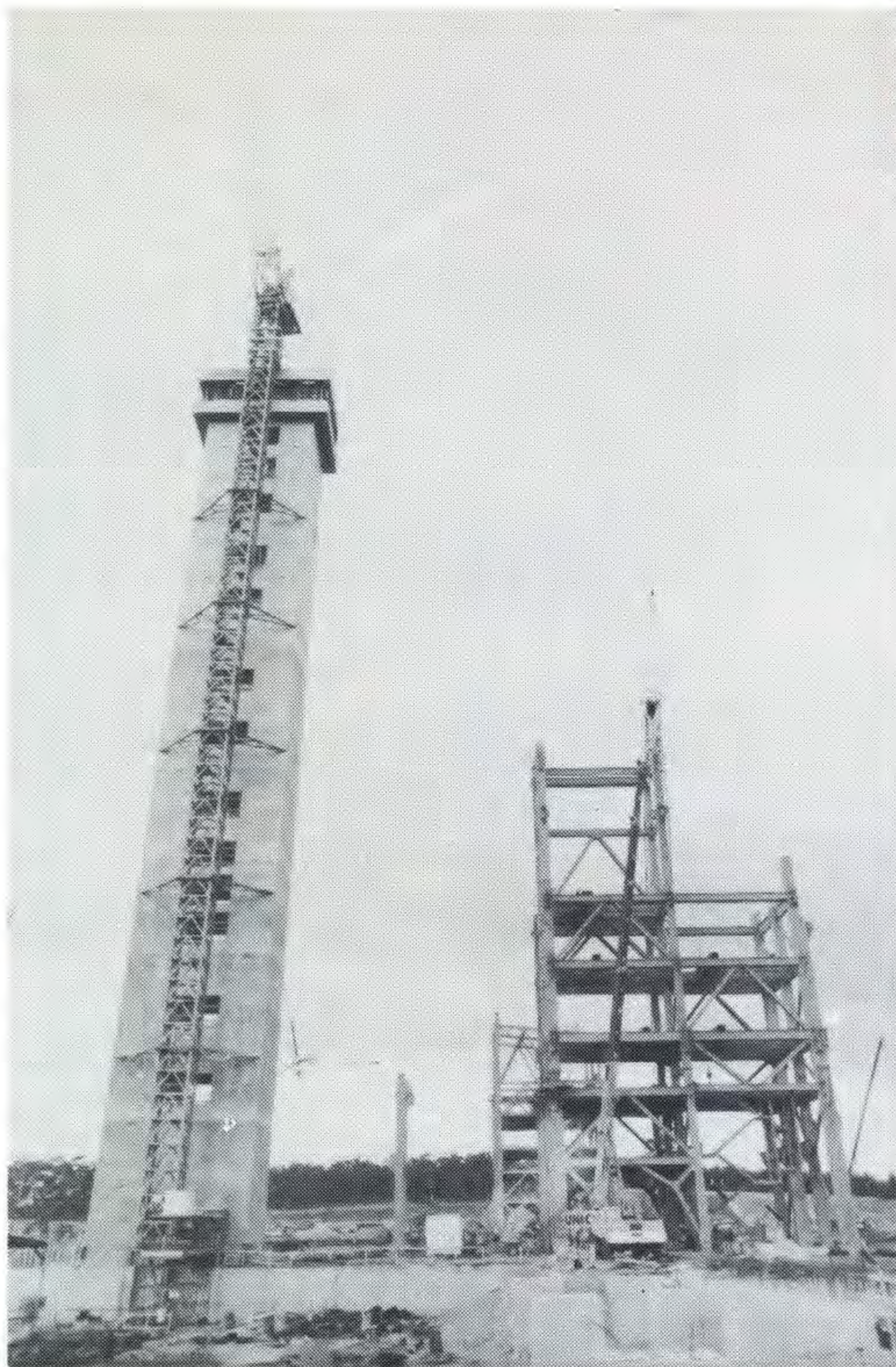
Poorer quality top layer coal is already being removed from the gullet cut.

Earthworks on the ash pond, settling ponds, high level water storage and the overburden run-off pond are well under way and on schedule.

The total project covers more than 5000 hectares, while the open cut will eventually cover more than 1100 hectares.

Loy Yang 'A' station is scheduled to come into service progressively between 1983 and 1987.

Total capacity of the approved development will be 4000 megawatts.



CONSTRUCTION of the Loy Yang 'A' power station is silhouetted against the wintry Gippsland weather.





'BROWN POWER' – 30 YEARS SERVICE

Completion of 30 years service with the SEC was recognised for 19 Engineering Services employees on May 30.

They were each presented with a copy of the book *Brown Power* by Manager Engineering Services Ray Greenwood at an informal afternoon tea in the Yallourn Civil Works canteen.

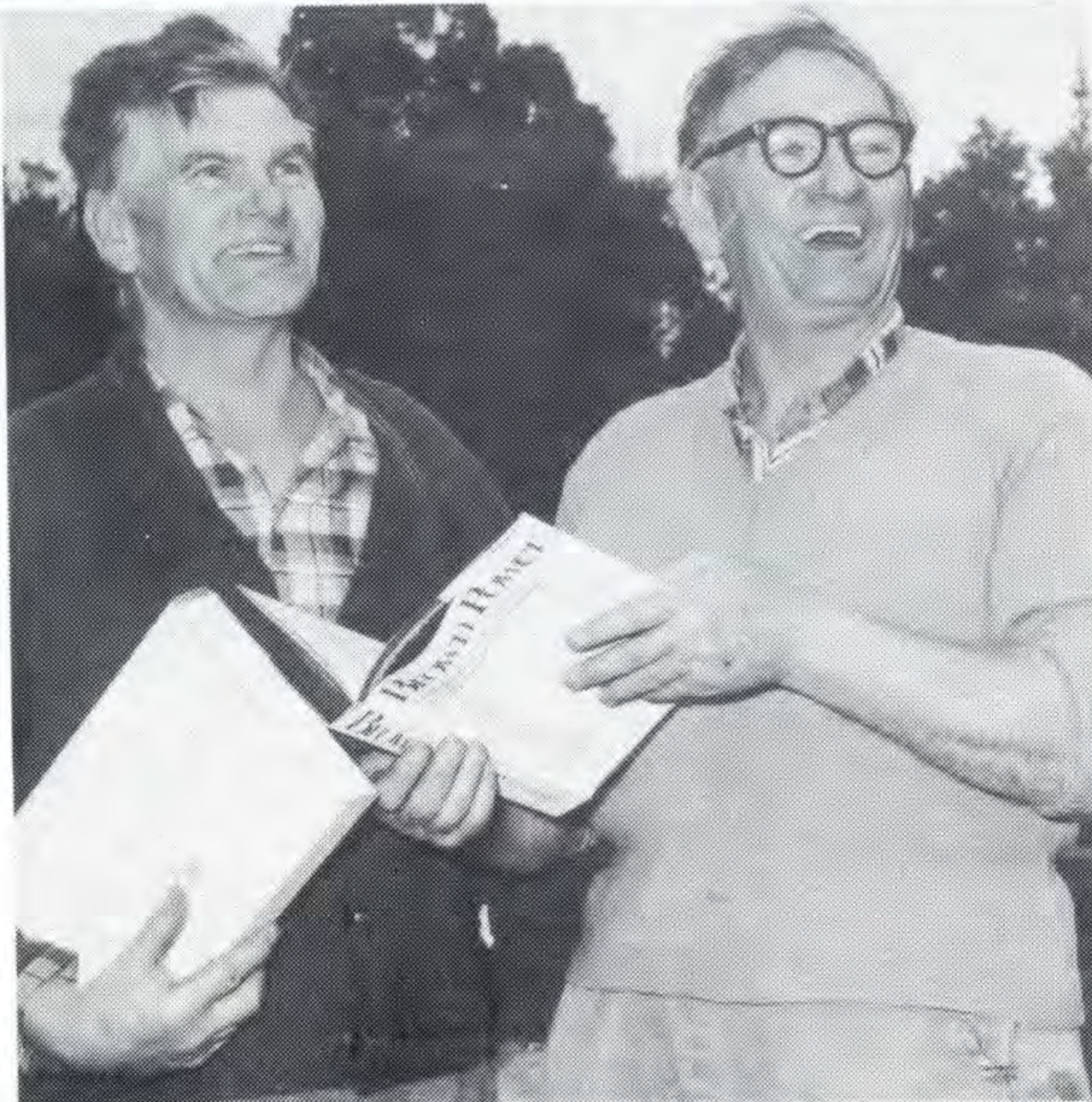
In making the presentations, Mr. Greenwood paid tribute to the years of valuable and dedicated service given by the group.

Recipients were:—
 Civil Works: Bob Young, Jack and Rod Todhunter, Jim Bindokas, Leo Tucimskas, Max Baszcuk, Nick Tabaczynski, Bill Nelson, Tom Warford, Harry Potter, Jock Clark. Morwell Workshops: Geoff Hansen, Norm Boyes. Yallourn Workshops: Barry Passey, Leo Donovan. Yallourn Transport Workshops: George Edmunds, Bruce Coghlan, Ted Johnston and Les Hibbert.

● *Brown Power*, written by Cecil Edwards, a former Editor of the *Melbourne Herald*, is a historical treatment of the first 50 years of the State Electricity Commission's activities..

*Manager Engineering Services Ray Greenwood congratulates some of the 19 employees outside the Yallourn Civil Works canteen after receiving their copies of *Brown Power*.*

Congratulations, brother and the same to you. Ron (left) and Jack Todhunter congratulate each other on their excellent service records with the SEC.



FOR SALE

4½ HECTARES unspoilt bushland; natural flora and fauna; substantial deposit of peat; 3 prime building sites with easy access main road; school bus; SEC power; good development potential for water supply; 6 mins. drive from Loy Yang. Outside IDO. Inquiries should be directed to Editor, Contact 3228.

Togetherhness...

Jack and Ron Todhunter have worked with the SEC for more than 30 years . . . 31½ years to be precise.

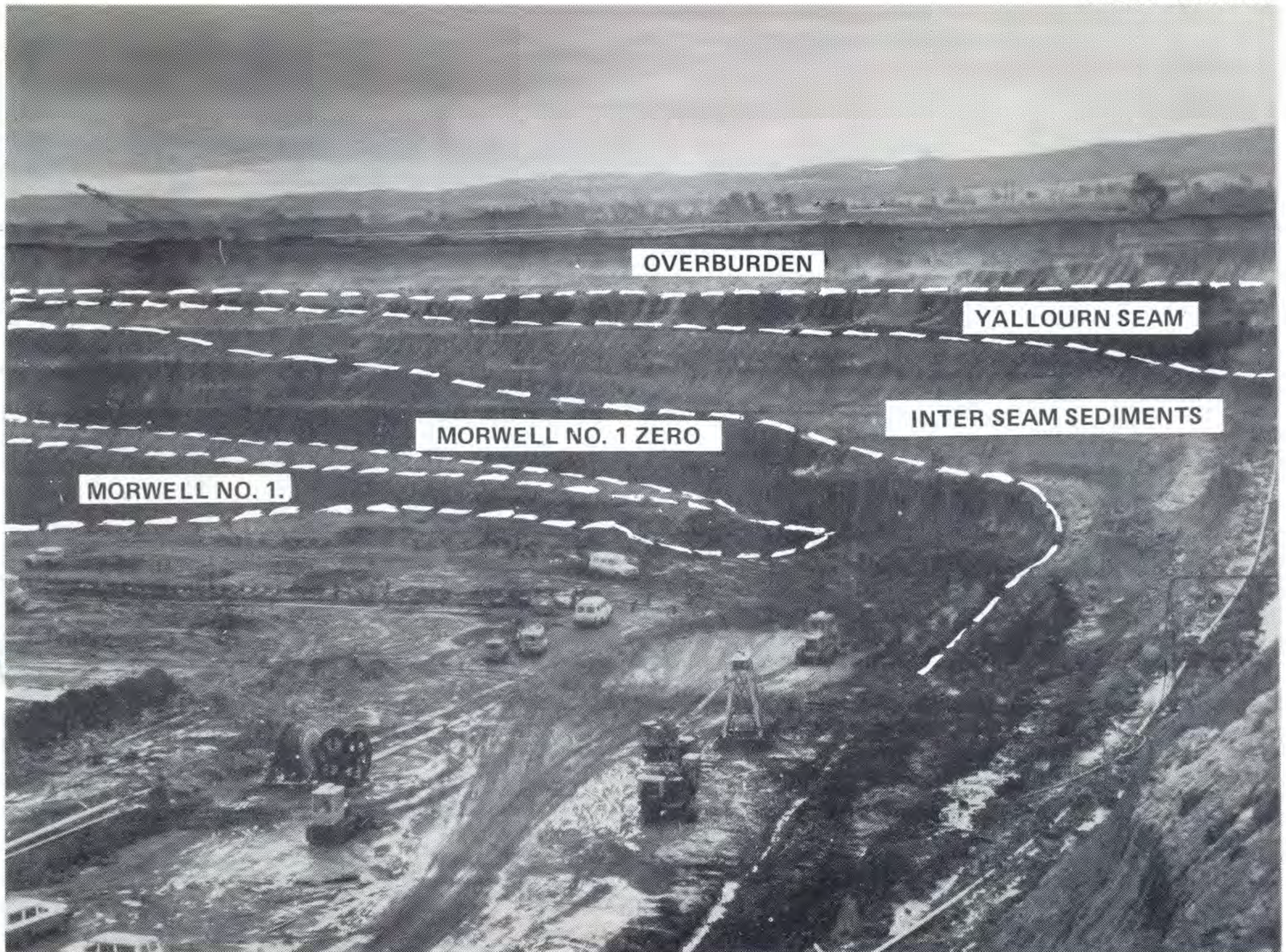
They began in 1948 at Yallourn as laborers and have worked in the same gang at Yallourn Civil Works ever since.

The Todhunters are the only brothers with such a record in the Latrobe Valley.

Both Jack and Ron received their 'Brown Power' books — together — from Manager Engineering Services Ray Greenwood on May 30.

FOUND

Pocket calculator, near Yallourn Coal Production office. Inquiries, phone 3175.



Yallourn seam enters Morwell open cut

The Yallourn coal seam is now being dredged in the Morwell open cut.

SEC Geologist Bob Gaulton brought this interesting fact to CONTACT's notice this month.

The Yallourn Coal seam is the one which the Yallourn open cut is based on and was first excavated in 1923.

The seam which is only six metres below ground level was first noticed early in 1979.

The possibilities of the seam being mined for use in the Hazelwood power station or the Morwell briquette factory are currently being investigated.

At present the seam is only seven metres thick but as the open cut pivots through the north west corner of the open cut the Yallourn seam should become thicker, up to 15 metres, and more noticeable.

The coal is generally similar to that in the Yallourn open cut.

The Yallourn coal seam is clearly identified in the picture (above), just below the top layer of the overburden. CONTACT's photographer snapped the picture from the Northern face of the Morwell open cut last week.

THINKING OF TRAVELLING

The S.E.C. Credit Union now has its own Travel Service.

Manager Bob Dickins can assist with your travel plans whether it's overseas or in Australia. Members benefit by booking through their own travel service.

Call Bob Dickins now on Morwell 34-5664 (12 noon-5 p.m.)
Sale 44-3976 (24 hours)



Operated by Stewart Moffat World Travel Service.

110,000 KM OF POWER LINES IN VICTORIA.

The SEC network comprises 110 000 km of power lines. Each average working day eight km of lines are built, a power pole goes up about every eight minutes, and a new transformer is installed every 50 minutes.

Throughout Victoria about 120 additional customers are connected to the State supply system every working day — an average of about one every four minutes.



Ted makes Aust. volleyball team as vice-captain



Australian under 20 volleyball team members Ted Kalkhoven (left) and Shaun O'Neill (right) are pictured with coach John De Vries (Yallourn Drawing Office).

Third year electrical apprentice Ted Kalkhoven, 17, has been selected in the Australian under 20 volleyball team.

Another SEC apprentice, Shaun O'Neill (carpenter), has also been selected in the team.

Both of Morwell, Ted and Shaun play with the Ulysii Club in the Latrobe Valley Volleyball Association.

The Pacific Championships will be played in Hawaii in

FOR SALE

RESIDENTIAL block of land in Traralgon, corner Gunya St. and Sally Crt., with a northerly aspect. Situated in Erinvale Estate. Block size 34 metres x 17 metres. Price on application, contact: Rick Crookes 3737.

August against world class competition from Japan, Korea, USA, Canada, Philippines and a number of other countries.

It will be the second time Ted, who is vice-captain, has competed in the championships. It is Shaun's first year.

Standing about 190 centimetres tall, each player is a spiker in the team.

The boys are coached by another SEC employee John De Vries (Yallourn Drawing office). They train three nights a week for up to two hours each evening.

It will cost \$1000 each for the trip and fundraising efforts are being made to ease the financial burden.

Donations can be sent to John De Vries, Yallourn Drawing Office, Ext. 2066.

Potential dangers of electric drills

Being a home handyman can be very rewarding — but it's a hobby which can have its moments!

Careful maintenance and use of electrical equipment is one area which requires a lot of attention.

For instance, the Commission's Chief Electrical Inspector, Len Francis, today pointed to an unusual hazard which can be caused by an unsatisfactory method of securing the chuck key to

"In many cases the chuck key — which is used to open the jaws of the drill — is attached to the cord with a thick plastic tie when not in use," Mr. Francis said.

"After a time, this tie can become worn or damaged and break away. People then look for an alternative way to attach the key to the flexible cord, sometimes choosing to hold it in place with a piece of wire.

"Recently a man was killed because the sharp end of a piece of wire securing the chuck key penetrated the flexible cord.

"The man was holding the drill in one hand and went to use the chuck key with the other. The key was "live" and he received a fatal shock."

Mr. Francis said that a similar danger could be created by the wire wearing through the flexible cord

and contacting live conductors.

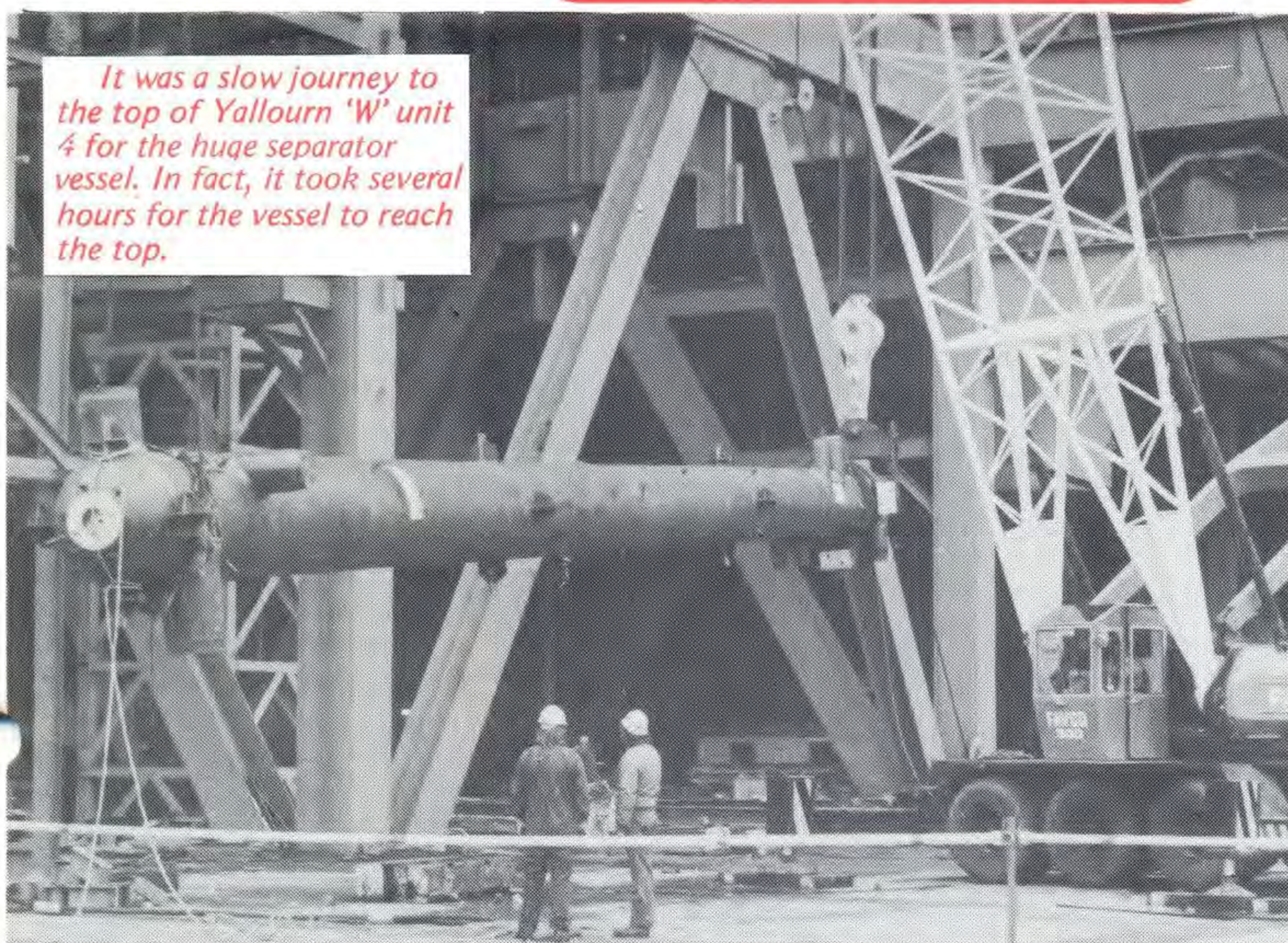
The moral of that story is that if people with electric drills want to secure the chuck key to the cord, they should be sure to use a non-metallic tie.

Care should also be taken to ensure that the tie is short enough and positioned far enough away from the drill to prevent the key or tie from becoming tangled in the drill in use.



POWER GENERATION

It was a slow journey to the top of Yallourn 'W' unit 4 for the huge separator vessel. In fact, it took several hours for the vessel to reach the top.



Separator vessel now in position

A 64-tonne boiler component was hoisted into position at the SEC's Yallourn 'W' power station on May 31.

The 32 metre long separator vessel, which is the largest single pressure component of a boiler, took more than three and a half hours to be secured into position near the top of the Station's Unit 4.

The lift was carried out by contractors International Combustion Australia, which has the contract for construction and installation of boilers for the third and fourth stages of Yallourn 'W' Power Station.

Thirty metres long and 1.5 metres in diameter, the separator has been designed to work at pressures of more than 2000 pounds per square inch.

Yallourn "W" riggers are tops in safety

Yallourn 'W' riggers Group 11 has established an SEC safety record for riggers in the Latrobe Valley.

The 32 member group has notched up 100,000 manhours or more than 2½ years without a Lost Time Injury . . . and they're till going strong.

Up to June 1 they had recorded 131,743 man-hours.

The last LTI was recorded on August 8, 1977. Considering the high daily risk factor in rigging, the group's performance is highly commendable.

The majority of riggers' work is to erect scaffolding in and around power stations.

At an informal presentation ceremony in the Yallourn West Mess, Yallourn 'W' power station superintendent Allan Castelow presented the National

Safety Council of Australia's certificate and plaque to riggers Dennis Murphy and Gus Eaton.

Yallourn 'W' power station superintendent Allan Castelow (centre) presents the National Safety Council of Australia's certificate to Dennis Murphy (left) and Gus Eaton.




**COAL
PRODUCTION**

Food machine is proving popular

Morwell Coal Production shift employees are more than happy with a new innovation at their bus shelter.

A food vending machine, on loan to the Department, is being operated by the Morwell Workshops Area Social Club, the Club

which caters for all Coal Production employees.

Profits from the machine are channelled back in to the club funds.

Installed initially as an experiment to gauge the mens acceptance of it, it has proven to be very successful.

The machine is loaded with a variety of food, from pies and salad rolls to soup and confectionery.

Most popular foods, and not so popular, are being monitored as to give the employee the variety of food, in the machine he requires.

Shift workers normally bring their own meals into work, but now if, for some reason, they have forgotten their meal, they have a choice.

If shift employees have suggestions as to what food they would like in the machine they should contact Allan Vernon Ext. 3571.



Coal Production's Rod Kent (centre) thinks the new food vending machine is tops. Looking on are Allan Vernon (left) Morwell Workshops Area Social Club and Coal Operations Superintendent Graeme Freshwater.

'Bluey' will warm up winter nights

Those cold wintry days and nights will be warmer from now on for Coal Production open cut employees.

All shift employees have been issued with new heavy quality Tasmanian 'Bluey' woolen coats and as further stocks become available they will be issued to day personnel.

The coats, for personnel issue, are the responsibility of Coal Production employees.

Overalls, goggles, gum boots, hard hats and wet

gear are issued as required within the Department.

TO LET

Port Macquarie, N.S.W. - Fully furnished holiday unit, carpeted throughout, colour T.V., car-port, swimming pool, superb ocean and river views.

Close to town, beaches, R.S.L. and bowling club. Ring Maurie Toussaint (Newport Power Station, 26-364) for free brochure.

\$ 20 Million contracts

—Loy Yang

Five new contracts, for the Loy Yang power station and open cut project, valued at more than \$20 million were let earlier this month.

Assistant General Manager (Development) Jack Johnson said the contracts had been awarded to —

* C. D. Mason Constructions Pty. Ltd. for the construction of a coal production complex - \$3.1 million.

* Codelfa Construction Pty. Ltd./Cogefar Pty. Ltd. for the construction of open cut fire service reservoir pipelines - \$4.3 million.

* Deer Park Engineering Ltd., for the supply and erection of power operated cranes

and hoists for the Loy Yang A Power Station - \$1.7 million.

* ASEA Pty. Ltd., for the supply of protective metering and control equipment for the Loy Yang A Power Station - \$4.6 million.

* John Thompson (Australia) Pty. Ltd., for the supply and erection of station chemical plant at the Loy Yang A Power Station - \$5.6 million.



AREA
ADMINISTRATION

JIM'S OFF TO RUN IN GERMANY

Morwell records officer, Jim Willis could quite literally be nicknamed 'Globetrotter'.

Jim, who at 45 years of age runs more than 150 kilometres a week, will be competing in the World Masters Track and Field championships in Hanover,



Germany, early in August. He'll be competing in the marathon and pentathlon.

Two years ago, Jim travelled to Gothenberg, Sweden, to compete in the championships. He finished 33rd in a field of 350 in the marathon.

While overseas he toured Norway, Holland, Germany and Singapore. On this trip he intends to tour Europe extensively.



Richard Hopely, now a second year apprentice gardener, was pictured at last years exhibition in the Morwell town hall.

Career exhibition don't miss it

A wide range of trade and technical careers will be on display at the SEC's annual career exhibition in the Morwell town hall from July 10-13.

The job opportunities within the SEC for Gippsland secondary school students contemplating trade training and technical careers will be demonstrated at the exhibition.

The exhibition is aimed at creating an awareness of the opportunities which will be available in 1980 within the SEC's Latrobe Valley undertakings and informing prospective applicants of the requirements for the various positions.

The exhibition will also help students clarify their expectations.

(Continued on page 14)

FOR SALE

TRAILER SAILER. 18 feet Hartley half-cabin Bondwood. Aluminium mast. All sails anchor gear. Seagull motor 5 h.p. Ideal for club or syndicate. Sleep two. Registered trailer. All lights. Tom Taylor. Phone 27 2764.

Deductions are tax deductible

SEC employees who have supported the Latrobe Valley Hospital's Nursing Home Project, either directly or through payroll deductions, are reminded that such donations are tax deductible.

However, it is important that when claiming the deduction, reference is made only to the Latrobe Valley Hospital.

There have been several reports of payroll deduction donation claims being disallowed. This can be avoided if those making the claim simply insert the words "Latrobe Valley Hospital" and the appropriate amount in the section of the tax form relating to gifts to public institutions.

TO AVOID CONFUSION, NO REFERENCE SHOULD BE MADE TO THE NURSING HOME PROJECT OR TO THE CARE OF THE AGED.

If a claim is disallowed a statement indicating the amount donated for the financial year can be obtained on application to the Hospital Manager.

Donors should write to the Australian Taxation Office, enclosing the statement from the hospital, explaining that the donation was to the Latrobe Valley Hospital and is tax deductible.

SERVICE REGISTER

COMMISSION staff and wages personnel who reached significant service milestones during June are included in the register this month:

25 YEARS:

Lionel Briggs	Yallourn open cut
Ronald Frost	Yallourn open cut
Jack Hewson	Morwell Briquetting and Power Installation
John Strong	Yallourn 'W' power station
John Poelsma	Yallourn workshops
William Graske	Yallourn open cut
Ronald Baxter	Civil Services, H/Wood
Fredererick Evison	Yallourn 'W' Power station
Joachim Kevekordes	Transmission operations, Latrobe Valley
Albert Reed	Mechanical Services
Frederick Lynch	Materials and Services

30 YEARS:

Noel Edwards	Materials and Services, M/W
Thomas Gilmore	Civil Services, Morwell
Robert Stewart	Yallourn power station
Stanley Fisher	Materials and Services
Tony Daddo	Morwell Briquetting and Power Installation

31 YEARS:

Francis Siggins	Yallourn open cut
Murray Walker	Civil Services, Yallourn
Roland Thompson	Mechanical Services, Yall.
Kenneth Waite	Civil Services, Yallourn

32 YEARS:

Frank Rennie	Morwell open cut
Aubrey Davey	Yallourn open cut
Lyle Seear	Yallourn power station

33 YEARS:

Richard Cannot	Yallourn open cut
Allan Young	Transmission Services, Latrobe Valley
William Stevens	Yallourn open cut
Walter Entwistle	Mechanical Services, Yallourn
Ronald Mansfield	Yallourn open cut
William McInnes	Hazelwood power station
Edmund Crookes	Coal Production Headquarters, Morwell

35 YEARS:

Sydney Veal	Central workshops, Yallourn
-------------	-----------------------------

38 YEARS:

Albert Chinnock	Hazelwood power station
Ernest Mitchell	Yallourn open cut
Frank Miles	Engineering Services, Headquarters, Morwell

39 YEARS:

Alfred Cook	Hazelwood power station
-------------	-------------------------

40 YEARS:

Brian Dooley	Finance, Morwell
--------------	------------------

(Continued from page 3)

Utilisation of energy -community responsibility

And it can be done with the minimum operator comfort, even without air conditioning.

Metal can be case (or surface) hardened in seconds. A flange on a hardened steel locknut can be 'normalised' or softened, in three seconds without affecting the rest of the nut.

Silver soldering of a brass fitting to a copper pipe takes 12 seconds and there are numerous other examples.

Heat induction removes many of the discomforts of conventional processes. Industry saves money, not only in lower energy bills, but

also in "cleaner" forging jobs, increasing the life of dies — in some cases by up to 400 per cent.

But the work of the Centre does not stop at induction heating.

Industrialists attend the centre for demonstrations, and SEC Centre staff visit industrial premises to advise on improved uses of energy.

One of the benefits from experiments carried out at the centre is the use of small, floating plastic balls on the surface of open cut water processing tanks which trap heat and cut electricity use by 69 per cent.

(Continued from page 13)

Career exhibition

Detailed displays in 14 trades, traineeships, commercial and engineering careers will be open from 9 a.m. to 5 p.m. on July 10, and 11 and from 9 a.m. to 9 p.m. on July 12 and 13.

The SEC the largest employer of apprentices in Victoria, has employed 200

apprentices this year, bringing the number employed by the Commission in the Latrobe Valley to more than 500.

In recent years the SEC has been steadily increasing its apprentice intake to meet its future needs for skilled tradesmen.



TOM MOGFORD

ical Construction Yallourn, where he worked for 10 years before being transferred to the Yallourn Briquette factory in 1965.

In February 1970 he was moved to the Morwell Briquette factory as a leading hand rigger the position he retired from.

In retirement Tom intends to enjoy his hobby of fishing and taking his retirement from day to day. At present he and his wife are enjoying a holiday in sunny Queensland.

After more than 24 years with the Commission Tom Mogford called it a day on May 19.

Tom began with the Commission in November 1955 as a rigger at Mechan-

retirements



ROY WIGGINS

A well known and popular person around the Commission, Roy Wiggins, has retired.

Roy, who has worked with the SEC for more than 45 years, called it a day on June 3.

Roy's three elder brothers, Alec, Ron and Vic also worked for the Commission. Their years of service total more than 140 years.

He began with the SEC in December 1934 as a lad laborer with Coal Supply, Yallourn, then in September 1935 he began an apprenticeship with the Yal-

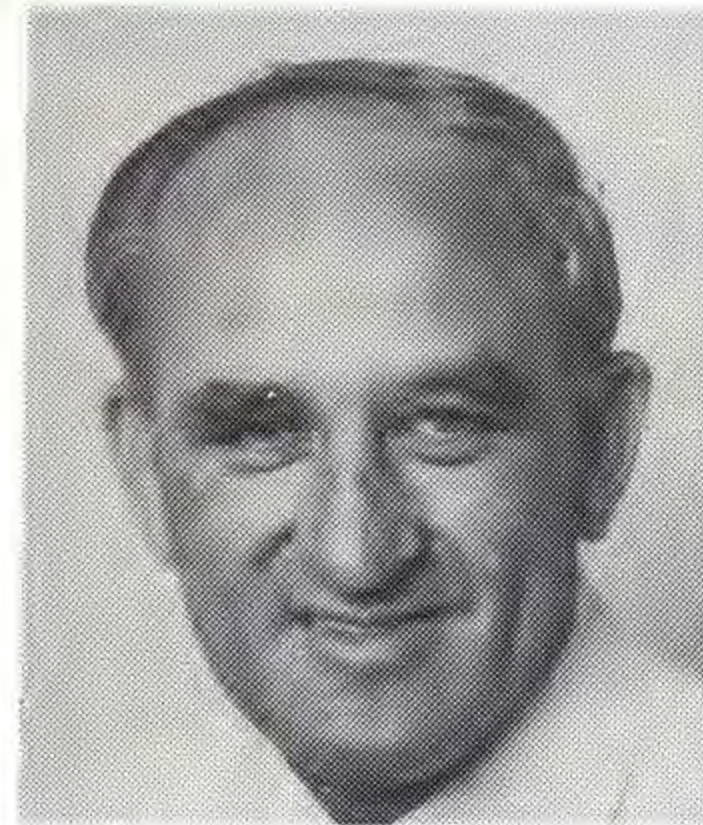
lourn workshops where he remained until 1941 when he left the Commission.

In April 1946 re-joined the Commission as a moulder at the Central workshops Yallourn. He was appointed a fireman with the Yallourn fire brigade in April 1955 and then returned to the workshops as a moulder.

April 1963 saw another move for Roy, this time to a technical services officer with general services, Morwell. He was reclassified and moved to Civil Works, Morwell in 1963, the position he retired from.

At an informal farewell function in the Latrobe Valley Visitors' Centre at Morwell, Departmental Co-Ordination Engineer Geoff Miles presented Roy with an electric drill and wallet and notes. His wife Shirley was presented with a sheaf of flowers.

The Wiggins will make their future home in Coff's Harbour, New South Wales.



SID PRIMMETT

Sid Primmatt will continue to live in Morwell in retirement.

After more than 24 years with the Commission Sid retired on May 2.

He began with the Commission in June 1955 as an electrical fitter at the Yallourn power station. On August 15 1955 he was reclassified leading hand electrical fitter and on several occasions acted as temporary foreman for extended periods.

He was appointed foreman in April 1959. He transferred to Morwell Briquette factory as Maintenance overseer in July 1962 and in January 1975 was reclassified supervisor electrical section Morwell Briquetting and Power Division, the position he retired from.

At an informal farewell function in the MBPI canteen, Station Superintendent, Cyril Morellato presented Sid with an electric wood planer on behalf of his workmates.

STAN AITKEN

Due to ill health one of the SEC's identities Stan Aitken, has retired from the Commission after more than 35 years service.

A very popular and well known person, within and outside the SEC, Stan began his service in April 1944 as a junior clerk with Gippsland Branch Electricity Supply Department. He was later appointed timekeeper and in February 1955 transferred to the Midland branch at Castlemaine.

After further promotions within the Midland branch, Stan was appointed Works Amenities Officer at Morwell Administration in 1960.

August 1961 he returned to Gippsland Branch as Administration clerk where he remained until July 1963 when he returned to Morwell as Special Officer to the Manager.

In November 1964 he was retitled Public Liaison Officer, Latrobe Valley Region, and finally in March 1973 he was reclassified Public Relations Officer, the position he retired from.

A former Castlemaine and Traralgon footballer, Stan has been heavily involved in community and sporting activities. He is a life member and immediate past president of the Latrobe Valley Football League, and has held office in the Traralgon and Castlemaine football clubs.

He has also served on the committee of the Traralgon Racing Club, and represented the SEC on the Traralgon Chamber of Commerce and Gippsland Regional Tourist Authority.

Electricity supply

The SEC is the largest electricity supply authority in Australia, and Australia's largest individual coal producer. Its system of power stations generates virtually all Victoria's requirements of electricity.

valley visitors

Children enjoy SEC tours

Thousands of school children from all over Victoria and even inter-state look over the SEC's Latrobe Valley works areas each month.

One of those schools to look the SEC over this month was the Churchill Primary School.

Students were shown the excellent audio visual at the Latrobe Valley Control Centre at Morwell, the Morwell open cut, Hazelwood power station and the Morwell briquetting and Power Installation.

● GUIDED tours of the SEC's works areas are available seven days a week from 9 a.m. to 3 p.m. from the Latrobe Valley Visitors Centre Morwell. Contact Senior Guide Bill Hopkins Ext. 3415.



Human resources.....

More effective utilisation of human resources has potential to improve construction productivity on Latrobe Valley construction sites according to a leading American Civil Engineering Expert.

He outlined the contributions that people in various fields had made to the success of construction works in the United States of America.

PROFESSOR Borcharding (second from left) is pictured with SEC officers (from left) Construction Engineer Power, Latrobe Valley, Don Bromilow, Yalourn 'W' Site Engineer Keith Kesper, Loy Yang Site Engineer Graham Teese, and Loy Yang Resident Engineer Ron Boyd.

Professor John Borcharding, an Associate Professor of Civil Engineering at the University of Texas, expressed this view at a two-day seminar on construction productivity at the Gippsland Institute of Advanced Education late last month.

The seminar was attended by senior SEC officers, and engineers, Latrobe Valley contractors, an observer from the Federal Department of Productivity, GIAE Engineering faculty staff and Professor Ron Woodhead, Civil Engineering Department, University of New South Wales.

Dr. Borcharding said the productivity and motivation of field forces was of vital concern to all managers in the construction industry.

