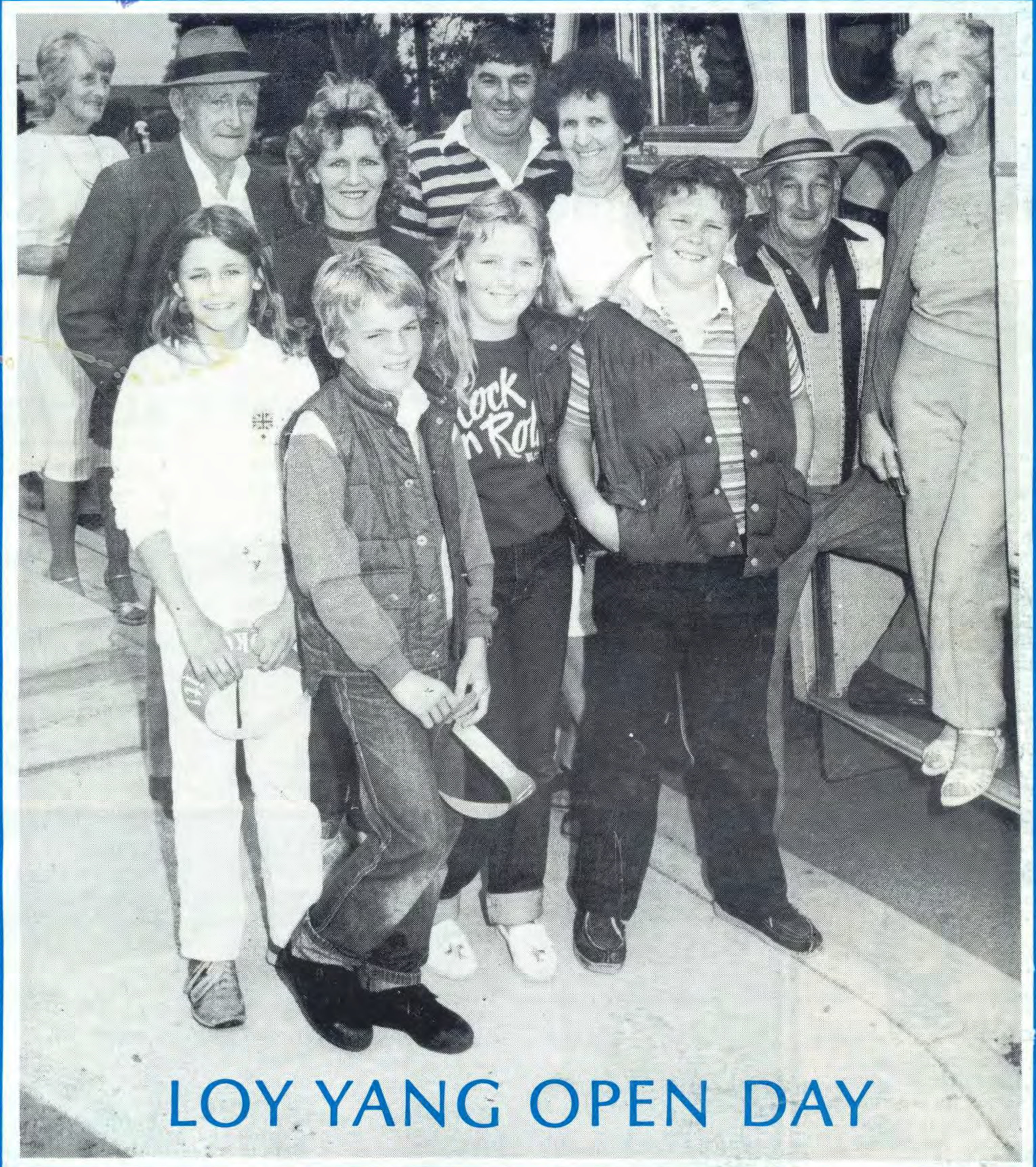




CONTACT

APRIL, 1983



LOY YANG OPEN DAY

Election will decide Board member

Following changes to the Commission's higher organisation with the passing of the State Electricity Commission (Amendment) Act, elections are soon to be conducted for an employee representative to sit as a part-time Commissioner.

The new Act provides for an increase in the size of the Board from four to seven Commissioners, comprising a full-time Chief Executive Officer (General Manager) and six part-time Commissioners.

One of the Commissioners will be an SEC employee.

The election for the employee representative will be conducted in accordance with the State Electricity Commission Employees' Representative Regulations 1983

and will be administered by a Returning Officer appointed by the Minister for Minerals and Energy.

The Minister has given formal notice of the election and in that notice called for nominations.

All employees on the books of the Commission one week before the final day for the acceptance of nominations are entitled to vote in the election and be eligible for nomination as a candidate.

Employees who wish to stand for election must furnish the supporting signatures of at least ten employees entitled to vote in the election.

Notices outlining the full name, department, location and classification or title of position of each

candidate will be published in the Government Gazette and distributed via a 'Newsgram' at the closure of nominations.

The election will be conducted under the preferential voting system.

An Electoral Roll is being prepared, and notices have been sent to all employees requesting, where necessary, amendments to recorded addresses. It is essential that addresses be as accurate as possible as ballot papers for the election will be sent to employee's postal addresses.

The Regulations giving full details of the election procedures are presently being prepared and copies will be available in the near future from the Government Printer.

Review of land acquisition recommended

A report has recently been released recommending a review of land acquisition and compensation procedures.

The report, prepared by Melbourne Barrister Mr. Stuart Morris, and released by the Planning Minister Mr. Evan Walker, calls for legislation to replace and simplify existing law.

The report calls for the abolition of the Lands Compensation Act (1958), which is based on an Archiac English Act, and also part of the Valuation of Land Act (1960). These should be replaced with a Land Acquisition Act which would govern all aspects of land acquisition and compensation.

The report said the existing law was unfair, verbose and obscure, and it was essential to have clear cut procedures for land acquisition.

"The Government and public authorities have an enormous effect on local communities and housing when they make a decision

about land needed for public purposes. It is in everyone's interest it we have a clear

procedure for coping with this," Mr. Walker said.

● Cont. page 14

Rains help — a little

Good falls of rain throughout the middle of March have done little to relieve Commission water restrictions.

Engineering Services Investigations Engineer Neville Smith said more good rains were needed to really make a significant difference.

"You could say the drought's only slightly bent — certainly not broken," Neville said.

"Since much of the rain we had was steady and soaking, not much run-off has occurred, and even though significant increases have been recorded in the flows of the Tanjil and Latrobe Rivers, they are still well below normal flows for this time of the year."

Neville said flows in these rivers were usually in the 700-800 megalitre range, but during the rains they were around 400 megalitres, and were now down to about 250 megalitres.

Moodarra Reservoir benefitted, with 150mm of rain falling in the Tyers catchment area to rise 350mm, a 2 percent increase.

Neville said the situation was unlikely to change unless a lot of rain was received during winter.

"We will need an extraordinarily wet winter to get on top of the situation," he said.

"After last month's rains, the grass may be a little greener, but that's about it," he said.

CONTACT



Prepared by the
L.V. Public Relations
Group for Operations
Group employees.
Editor: Pat Herley
—3228/3552

Cover

Some of the smiling faces boarding one of the many buses which made the trip to Loy Yang on the fifth annual open day.

Inside

Club Notes	4
Know Your Fund.....	5
River Study	7
Giant Suggestion Scheme Spread.....	8/9
"New Zealand here I come" ...	10
Service Register.....	14
Retirements.....	15

WHOLLY SET UP AND PRINTED BY
THE L.V. PRINTERS PTY. LTD., TRARALGON & MOE

Report urges winter restraint

The State Government and the SEC have released an SEC report on the Victorian energy situation for this winter.

The report estimates there is a 30 percent chance of some power restrictions this winter as a result of the drought which has gripped south-eastern Australian.

While the drought has broken in some areas, the situation is still critical for Victoria's hydro-electric system storages, and particularly the Snowy Mountains scheme which provides a major energy reserve to the State's power system.

Snowy storages, now holding only 19 percent of capacity, are the lowest since the scheme became fully operational and inflows in the past year have been the lowest in the 80 years records have been kept.

As a result, the Snowy system's capability for short-term energy

production this winter will be about half that of previous winters.

The drought has also meant that no hydro-electricity will be available this year from Dartmouth Reservoir and very little from Eildon.

The generating capacity of Latrobe Valley brown coal power stations will be boosted by the refurbishing and major maintenance on three units at Hazelwood power station.

Every effort will be made to keep generating plant operational and in the event of any break-downs, the aim will be to restore that plant to service in the shortest possible time to minimise any impact on the public.

In releasing the report, the Government and the SEC have appealed for co-operation from all Victorians in a bid to head off any power restrictions due to the drought.

Chief General Manager, Kevin Connelly said, "We must all recognise that the drought has left us with the possibility of some electricity supply problems for the winter and that a combined effort is required to overcome these problems.

"People can help by taking notice of any special appeals made by the SEC during the winter to turn off any unnecessary appliances. Appeals such as these would be made on days when there is a possible power shortage due to strain on the system." Mr. Connelly said.

While there is a 70 percent chance of no restrictions, the loss of flexibility at Snowy means that the SEC will be severely handicapped in covering coincident outages of several large generating units, particularly if combined with adverse weather conditions.

Loy Yang open day attracts 3 500

The fifth Loy Yang open day which was held during March proved a great success, attracting more than 3 500 visitors.

A difference to this years open day was that it was held in conjunction with the Traralgon Rotaract Club's fun day.

A helicopter and rescue truck display by the National Safety Council of Australia was very popular, attracting many interested families.

Other displays included the Traralgon Historical Society, BMG Concrete and the Loy Yang Social Club, which under the direction of President Martin Hill had a great publicity drive selling T-shirts and stickers.

The Traralgon Football Club Ladies Committee provided an excellent lunch and afternoon tea.

Throughout the afternoon buses made the one hour trip out to, and around, the Loy Yang site. All told, about 90 busloads inspected the works area.

Loy Yang Public Liaison Officer Bruce Savage said the day was an outstanding success.

"As we expected, people came from all corners of the Latrobe Valley and Gippsland.



Above: Another group of happy visitors about to depart from the Traralgon Showground for a tour of the Loy Yang works area.

Credit Union branches out

The SEC Latrobe Valley Credit Union is spreading its branches with the opening of an agency in Traralgon.

The Credit Union's Latrobe Valley Manager John Hooper said the new agency would give Credit Union members living or working in the Traralgon and Loy Yang areas easier access to their Credit Union.

"It's simply another step in the Credit Union's process of providing a better service to its members," said John.

The new agency, located in the offices of real estate agents King and Heath of 131 Franklin Street, opened on April 18.

At the new agency, members can:

- * Lodge Deposits;
- * Make withdrawals of up to \$200 per day in cash or \$1000 per day by cheque;
- * Lodge any other documents for forwarding to the Morwell office.

Existing and potential members should register their signatures at either King and Heath or the Morwell office so as they can transact business at the Traralgon agency.

Credit Union members now have access to their Credit Union at Moe, Morwell, Mid-Valley Shopping Centre and Traralgon.

The Mid-Valley Shopping Centre has extended hours, remaining open till 8pm on Thursdays and Fridays, and opening Saturday morning, 9.30-11.30.

Club Notes . . .

Hazelwood Power Station Social Club

Hazelwood power station Social Club's next function is a train trip to the Melbourne zoo on Saturday April 30.

The cost of the trip, which also includes zoo entry, is \$4 for adults and \$2 for children. The trip is limited to 235 people.

The club's annual Men's night will be held on Friday May 27 at the Falcons Soccer Club, Crinigan Road, Morwell. Special guest will be comedian Col Elliot. The tickets are \$10 a head, all inclusive.

Free transport home will be provided.

Tickets will be on sale on May 3, 4 and 5 at the Hazelwood power station sub administration building. For further details contact Laurie Williams on 5176.

SEC Staff Social Club

The Staff Social Club elected its new committee last month.

The new executive is Bill Hall (president), John Hallyburton (vice president), Tony Dickinson (secretary), Rod Doig (treasurer). David Madden is member registrar.

The new committee is John Hayden, Heather Lang, Mike Ritchie, Don Watson, Rene Kenter, Alan Macrae and Peter Lawrence.

The club's first 'do' is a Chinese banquet at the Jade Room, Traralgon, on May 6.

Tickets are \$20 a double for members, which covers the meal and drinks, and are available from Bill Hall, Tony Dickinson and Rod Doig. Book early — there are only 100 places available.

Yallourn Open Cut Social Club

In what was described by treasurer Alfie Bechaz as a "a terrific day in atrocious conditions" 35 golfers braved the rain to compete in Yallourn Open Cut Social Club's golf day held last month at the Yallourn Golf Club.

Winners in 9 and 18 hole events were:

Handicap division: Brian Francis and Bob Odum.

Kelloway division: Hec Moncrief and Keith Cook.

Associates: Judy King.

Highest Score: Pat Shine.

The club's annual general meeting will be held at the Yallourn Golf Club on April 27 starting at 5.00 pm. All members are asked to attend.

The Moe Club is having a sports night on Friday, April 29 in their function room, Moore Street, Moe. All male members of the Yallourn open cut Social Club have been invited. For further information contact Ray Davis on 2408.

Morwell Briquette and Power Social Club

Morwell Briquette and Power Social Club last week awarded more than \$1600 in prizemoney to entrants in its secondary school scholarship competition.

The scholarships were open to students in forms 1-6 whose parents are club members.

Twenty-five scholarships were awarded and a further 29 encouragement awards were made at a function at the visitors centre.

Superintendent, Briquetting and Power Cyril Morellato, Club President, Ken Hewat and club life member, Jim Dyer judged the 54 applicants during interviews.

Scholarship winners were:

Form 1 (\$30 each): Adam McNeil, Melinda Roberts, Jeffrey Lynn, Audrey Stewart, Maria-Pia Endrizzi.

Form 2 (\$40): Olga Mitsiois, Delia Prezioso, Matthew McMillan, Lisa Teresinski, Paige Walmsley.

Form 3 (\$50): Natalie Griffin, Tony Lais, Christina Teresinski, Susan Meinhardt, Filomena Fazioli.

Form 4 (\$60): Peter Lais, Wendy Nilsson, Tony Howes.

Form 5 (\$70): Shane Mann, Andrew Ipsen, Tracy Nilsson, Geoffrey Latimer.

Form 6 (\$80): Ruth Jordon, Christine Luckender, Louisa Cook.

According to Club secretary Bill Barnes more than \$10 000 has been awarded in scholarships and encouragement prizes since the Club began the scheme five years ago.

The Social Club's annual general meeting will be held on Monday, May 2 at the Morwell Club, Helen Street, Morwell starting at 7.30 p.m.

At the meeting, the Club's annual report will be presented and a new

committee elected. All members are asked to attend.

The Morwell Bowling Club in Hazelwood Road, Morwell will be the venue for the Club's ladies night on May 6.

Guest artists will be "The Arthurs", a brother and sister singing and comedy duo, and Peter Brennan, a busker/juggler. He was a recent winner on New Faces.

The Bowling Club is licenced and there will be a beef on a spit.

Cost, for lady members only, is \$7 a head. For further information contact Bill Barnes on 3219.

Transmission Social Club

The Transmission Social Club is also preparing to elect new office bearers. Nominations will be accepted up to May 10, the day of the Club's annual general meeting. They can be sent to Secretary Ivan Harris, CDE control room, Yallourn Power Station.

The club recently held a series of 9 hole golf competitions.

Although winners' names were not available it appears that retired Transmission Operations staff figured prominently.

The next 9 hole golf day will be at the Yallourn golf course on May 2.

Coal Road Social Club

The inaugural dinner dance of the Coal Road Social Club will be held at the Yallourn Golf Club on June 3, at 7.00 pm.

The band will be 'Exit' and tickets will be \$20 a double for members and \$35 a double for non members.

Yallourn W Social Club

Nominations for positions on the Yallourn W Social Club's committee are still being accepted. Names can be sent to Secretary Helen Procak, 1st Floor, Yallourn W administration building. Office bearers will be elected at the club's annual general meeting in May.

The Club's next function will be a dinner dance at the Gala Restaurant in Moe on June 10. The band will be 'Ramrod'. Members are asked to watch the Yallourn W kiosk notice board for further details.



AREA ADMINISTRATION

Wing five of Area Administration Department Morwell offices has been given a bit of beautification.

Under the direction of Gardening Foreman Paul Dam, an extensive program is being carried out which will have practical aspects as well.

The work includes removing a lot of shrubs and plants which were dying as a result of the extended dry spell, mulching of beds in some areas, and providing mowing strips.

Services Engineer, (Civil) Max Williamson said part of the job was aimed at reducing labor-intensive aspects of the job of gardening.

"By providing the mowing strips, we can cut down on the number of men, and the number of hours work needed to do the mowing."

"We've extended the actual garden-bed area, lined the edges with sleepers, and provided the concrete strip for the mower wheels. This makes the job of trimming the



Above: Some of the gardeners helping to give wing five a 'new' look. Pictured are Klaus Schindler, Gary Webb and Wally Van Unen.

edges much simpler," he said.

The mulching will serve two purposes. Using either tanbark chips or redgum chips, weed growth will be minimised, and less water will be needed to keep the ground moist — a big plus during the

extended dry periods.

Some of the larger shrubs have been removed from the corners of the Administration block to give car drivers better vision while driving around the building.

Safety in the home should always be a major consideration, but during retirement, with more time spent at home, it is even more important.

A large number of accidents are the result of falls, and as we get older, our senses are not as keen, we tire easily and react more slowly, and our bones are more brittle.

The following list can be used to check and see if you are heading for a fall.

- * Floor coverings — are there polished surfaces, loose rugs, worn carpet or lino?
- * Do you tend to reach too far when standing on a chair to clean windows or get into cupboards?
- * Do you climb too high up the ladder with an unstable footing for those do-it-yourself jobs?
- * Are there non-slip mats and grab rails in the bath?
- * Is your footwear suitable?
- * Are you moving heavy furniture without help?
- * Are there rails located on steps and stairways?
- * Is there sufficient lighting on landings and stairs?

Remember, prevention is better than cure, so bear these points in mind.

Another area where great care should be exercised is in the kitchen, and this applies particularly to cooking and the use of electrical appliances.

Know Your Fund

Never have saucepan handles sticking out as they can be more easily knocked off the stove.

Be careful of steam from a kettle and always be extremely cautious when handling fat.

The dangers of frayed electrical cords, cracked plugs, overloaded sockets and out-of-date wiring are obvious. Electric blankets should also be checked regularly.

Poisoning comes high on the list of accidents.

Never use medicines which are out of date or unlabelled. Mixing

alcohol with medicine should always be avoided, and all household chemicals should be stored in labelled containers.

With winter approaching rapidly, keeping warm comes high on our list of priorities.

Remember, guard all fires to prevent flying sparks and the chance of ashes falling onto carpets. Care should also be used with the type of clothing worn close to fires and radiators.

The dangers of smoking in bed are obvious, but how many times have you heard a news item where a house fire, sometimes with fatal consequences, has started this way. All these thoughts are plain common sense and apply to any household.

However, it is surprising how many people are victims in their own home each year.

SHEEP RETURN TO FOLD

For the past five months the sight of sheep grazing in works areas has been a familiar one to Commission personnel.

Not for much longer. With the lambing season approaching and good rains falling in Northern Victoria most have already been rounded up for the trip home.

More than 8 000 sheep had grazed in the Yallourn, Morwell, Hazelwood and Loy Yang works areas during summer. Now only about 2 500 remain.

About 1 500 sheep are still at Loy Yang and about 1000 are at Hazelwood. But these should be gone by the end of April.

Land Management Officer Brian Eddy said the sheep had successfully kept the works area free of long grass during the fire season.

"But now there is little feed left for them on Commission land," he said.

Brian said the Commission would consider similar aid to farmers if drought conditions reoccurred.



COAL PRODUCTION

With the long dry spell, Commission employees could be forgiven for thinking the drilling rigs working around Loy Yang are drilling for water.

The large diameter bore holes being drilled are not for water but to extract coal needed for tests at the Herman Research Laboratory.

The coal is tested for ash fouling properties as part of the laboratory's study into ash fouling of boilers by coal from different fields.

Commission Drilling Officer Fred Badenhope said the bore holes were larger than usual because of the quantities needed by the laboratory.

Each 1.5 metre diameter bore, drilled through the overburden to a depth of about 40 metres, provides enough coal to fill 200

Loy Yang coal for lab tests

drums each of 198 litre capacity," Fred said.

"The coal is then shipped in the drums to Richmond for burning in the laboratory's experimental furnaces."

Drilling one hole takes about a week. This involves sealing off the overburden with steel casing before the coal is removed.

The hole is then backfilled with coal from the Yallourn North open cut.

Fred said all coalfields were

being tested and in the current program, holes had already been drilled in the Maryvale coal field near Latrobe Road and two were being drilled at Loy Yang.

"The next program, to commence this month, would involve drilling even larger two metre diameter bore holes," he said.

Laboratory Fuel Research Scientist Ray Ledger said the extra quantities of coal were needed for the laboratory's new 1000 hour furnace.

Ray said the furnace was capable of burning 12 kilograms of coal an hour. "Each test burns around 12 tonnes of dried coal," he said.

He said the 1000 hour test was the closest the laboratory had come to simulating actual power station boiler operations.

Loy Yang open cut opens up

Since excavation commenced operations in the Loy Yang open cut began in earnest last September, more than 3.5 million cubic metres of overburden have been removed.

To help realise just how much that amount really is, Open Cut Planning Engineer Charlie Spiers has provided some comparisons.

The amount of overburden so far removed would cover the entire Melbourne cricket ground to a depth of 179 metres. Spreading it out a little would see Melbourne's 'Golden Mile' (the city block) covered to a depth of 1.4 metres.

Either way you compare it, that's a lot of dirt, and as time goes on it's going to get even bigger.

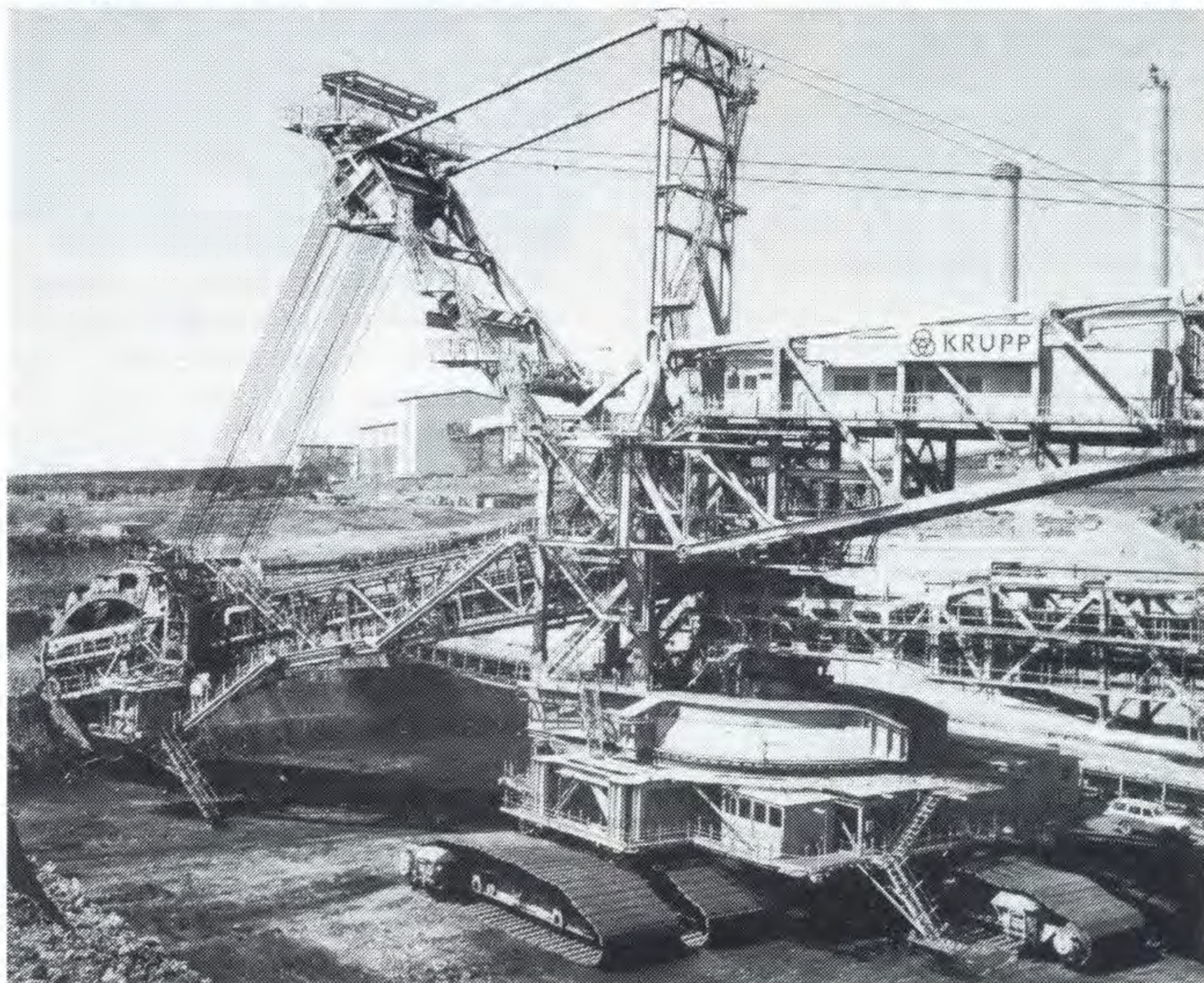
January saw a record month with 780 000 cubic metres of overburden removed.

Other months have seen consistent figures of around 600 000 cubic metres.

Shift operations have recently begun with ten men working in each of the two shifts over the seven day period.

Coal Operations Superintendent Graeme Freshwater said further shift expansion would be structured to suit open cut development.

"At this stage, dredger 14 is on top of the coal grading, and we've already cleared some good coal for power station use at a later date this year," he said.



The dredger is operating in an arc of about 500 metres, and has exposed an area of about 20 hectares.

Graeme said the reliability of the plant was improving but with the rain, a few problems had been encountered, following the long dry spell.

"We were faced with a few difficulties which we hadn't encountered in the past but by facing up to the problems and overcoming

them, we have learnt by our experiences. It proved quite a valuable exercise.

"All coal production operations personnel have made a big contribution in achieving what we have so far. They have really made a big effort toward the satisfactory operation of the plant."

Above. Loy Yang's massive number 14 dredge clearing the way for record-breaking coal winning operations.



ENGINEERING SERVICES

Commission — sponsored study a "first"

The Latrobe River Water Resources Biological Survey, one of the most comprehensive river studies ever to be undertaken in the Southern Hemisphere, is nearly completed.

The Commission sponsored study, to examine the aquatic flora and fauna in the Latrobe River and its catchment area, began in 1978. The river runs from near Powelltown, east of Noojee, to Lake Wellington near Sale.

According to Engineering Services Department Investigations Engineer Neville Smith, the study was commissioned because of environmental limitations likely to be imposed by the Environmental Protection Authority, especially on waste heat discharges into the Latrobe River at Yallourn.

Neville said the study would also provide a basis for further power station planning and future management of the Latrobe River.

"The EPA imposed licence restrictions on Commission waste discharges in 1978 and further restrictions were considered likely," Neville said.

"The Commission believed the maximum temperature limits in the Latrobe River that the EPA imposed for the summer months were unreasonable because normal river temperatures were often greater."

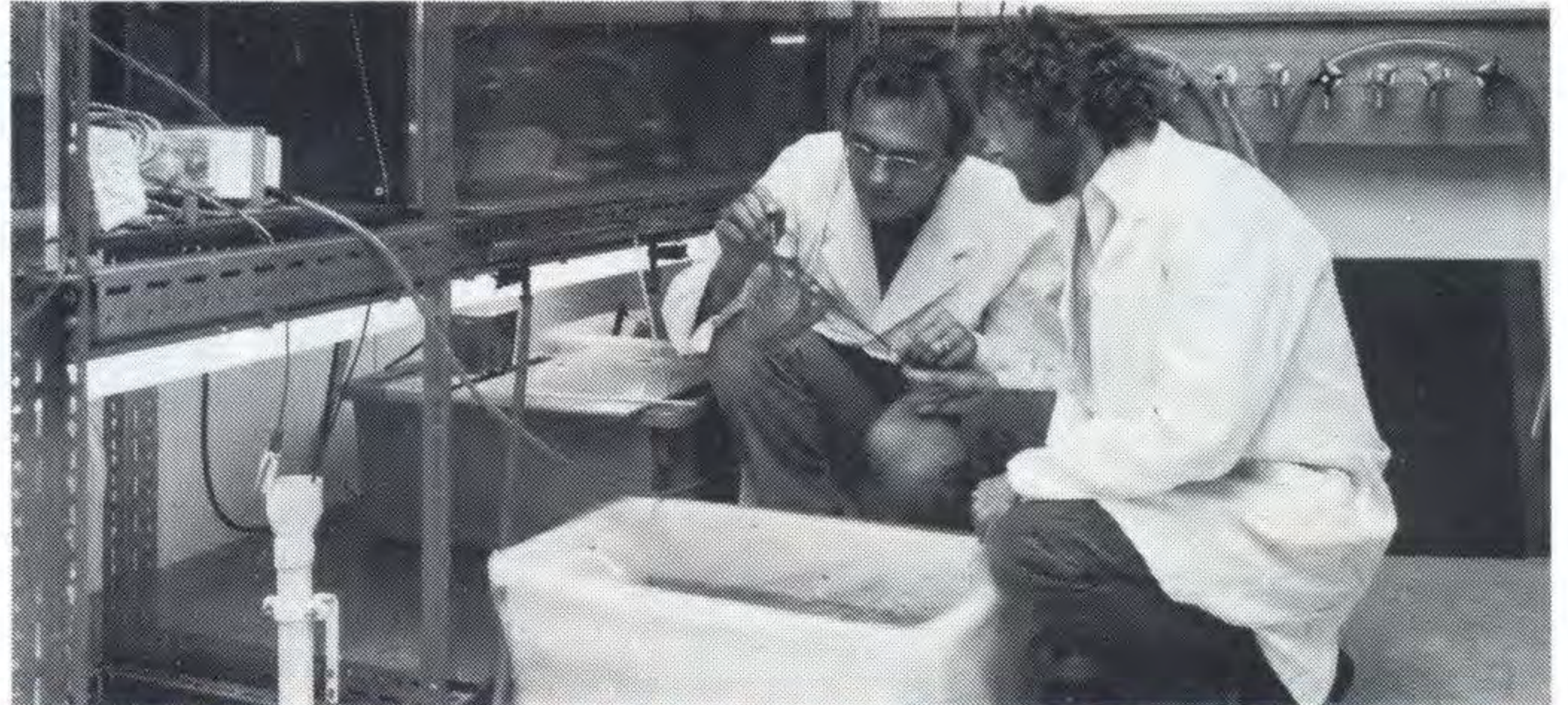
"But when Commission staff went looking for reference detail all they could find was information researched in the Northern Hemisphere. Nothing had been done that could be applied to Australian conditions," he said.

"The EPA had to use overseas information as a basis for their draft policies on licence restrictions."

"What was needed were facts about the Latrobe River system, and not assumptions based on overseas research. The Commission took the initiative and the LVWRBS was formed.

Neville said the study had three main objectives:

- To provide data on the present state of stream ecology;
- To detect any change in water temperature that may have occurred in recent years due to power generation operations;
- To assess the capacity of streams to stand variations in water temperature, stream flow and waste discharge.



Biologist Bohdan Karasymiw and scientific assistant Bryan Wright checking for abnormalities in some Pygmy Perch Fry at the Herman Research Laboratory.

Outside bodies were approached to act as consultants and undertake most of the investigation work.

The Latrobe Valley Water and Sewerage Board conducted a number of surveys on algae in the Latrobe River.

The National Museum of Victoria collected data on bottom dwelling river life along the length of the river.

Monash University's Earth Sciences Department measured the river's sediment flow.

The Commission's Research and Development Department examined

the effects of changing water temperature on the three species of native fish found in the Latrobe; the Australian Smelt, the Southern Pigmy Perch and the River Blackfish.

A biological laboratory was especially set up in R & D Department to carry out the tests. Other Commission departments also contributed.

Preliminary findings of the study indicate that the Latrobe River has not been significantly affected by Commission operations in the Latrobe Valley.

● Cont. page 14

LY. Central Workshops on the go

Just because Loy Yang central workshops can't be seen yet, doesn't mean they're not on site.

The beginnings of the Mechanical Services Section are alive and well and temporarily accommodated in bays seven and eight at the east end of the Loy Yang Transport Workshops.

With Supervisor Peter Alford, the skeleton crew so far includes a machinist, fitter, welder and a rigger.

The long task of setting up a comprehensively equipped workshop has begun with the installation of two lathes. A milling machine and radial drill are on their way.

Additional personnel are scheduled to arrive in the near future.

Tenders will soon be called for the construction of stage one of the workshops.

This will comprise a field office complex and a workshop bay measuring 90 metres by 20 metres.

The field office complex will serve as both an amenities block and office area, housing locker rooms, canteen, and a small metallurgical laboratory.

Stage one is expected to be completed during late 1984, with stage two, a second bay, scheduled for completion late 1986 or early 1987.

Headquarters Workshop Superintendent Charlie Prust said that if necessary, the workshops could possibly be extended to include a third bay.

Provision has been made to enlarge the workshops if necessary, with a third bay, or else by extending the existing bays in a westerly direction," he said.

"However, we will try to make the most of existing resources. This will require increased liaison between all the workshops, but the result will be worth it in terms of greater co-operation rather than the individual approach."



Gary Dunn

Power Generation Department has reduced its backlog of suggestions by 50 percent with the last batch of awards announced.

Hazelwood power station fielded two major awards, while Yallourn W power station had two and Morwell Briquette and Power scored one.

Gary Dunn, a technical officer at Hazelwood was awarded \$350 for a modification he suggested to the station's pulverizing mills.

Previously the hammers in the mills were held in place by a number of pins which were secured by a collar with holes drilled in the top similar to a tin of talcum powder.

The collar turned through an arc of about ten degrees, and was held in place by a key.

However, the key occasionally vibrated loose and dropped out, allowing the collar to turn back through its ten degree arc. When the holes lined up, the pins fell out and the hammer consequently fell off.

This often necessitated a major pulverizing mill overhaul, an expensive and time consuming operation.



Brian Nicholson

Gary's suggestion involved the simple replacement of the swivelling collar with a fixed keep which was spot-welded in place.

Gary said the key-retaining method was originally implemented for maintenance purposes.

"The swivelling collar was originally designed for easy access in the case of maintenance, but maintenance is not regularly needed," he said. "However, the keys dropping out were likely to cause more maintenance than would usually be necessary.

If one of the hammers in the mill falls off, it can cause a lot of damage."

A further advantage of Gary's suggestion was the saving of five stores items for every one of the collars used.

So far, 15 mills in the station have been modified with Gary's suggestion.

Brian Nicholson, a Foreman boilermaker, also from Hazelwood power station made a suggestion with an outcome slightly different to most suggestions.

His suggestion involved enlarging the coal chute so that insulation and refractory (concrete mix lining) could be fitted inside the coal chute to prevent over-heating and cracking of welds at the coal chute junction.

Brian suggested the enlargement be located about 60 centimetres above the junction of the gas take-off and about 15 centimetres to 25 centimetres on each side.

The suggestion was initially rejected due to the large amount of work needed to adopt it. However, during the reconstruction planning of units 1,2, and 4, consulting engineers came with an identical approach in planning a solution for the problem chutes. Their solution was the result of completely independent thought, having no knowledge of Brian's suggestion.

However, it was decided that an award was appropriate since Brian had first

Five bright Power Generation sparks

made the suggestion, and he was accordingly awarded \$300.

The successful Yallourn W contender was rigger Philip Farrugia.

Phillip's suggestion involved a revised approach in the use of slings when lifting the giant 25 tonne beater wheels.

Philip explained that previously two large, and very heavy, steel rope slings were each slung through a blade on either side of the wheel. The problem due to their size and weight was attaching them back onto the crane's hook. Also due to the weight which they were supporting, they also had only a very limited lifespan — about six months.

"What we've done now is to keep the larger slings hooked at both ends to the crane's hook, but then we've also used a smaller two metre sling and attached these to the larger sling with a shackle," he said.

"We've found the smaller ones last at least 15 months, and if they do eventually wear out they are much cheaper to replace.

"What's probably most important is that when fitting the slings around the beater wheel blades, they are lighter and easier for the men to handle."



Phillip Farrugia

"Obviously Philip's supervisor and the Suggestion Scheme Board were equally impressed with the idea, because they awarded him \$350.

Ken Jackson, a rigger at Yallourn W power station has really elevated his bank account with his suggestion he came up with.

Ken was awarded \$2000 under the suggestion scheme system for a platform he designed which would assist in overhauling the combined re-heat valves on W1/W11 turbines.

The valves are located about six metres above the mezzanine floor in stage one. Access to them is by way of scaffolding is very difficult due to extreme heat and a complex arrangement of pipes and electrical wiring.

Erection and dismantling of the scaffolding usually took four men about six days to complete.

Ken's suggestion involved the construction of a portable platform made of mild steel and uses either grid matting or plating as a walkway.

The platform is hoisted into position by an overhead crane, and bolted into position over the valve.

Ken said the platform would save a lot of time, and would also make the overhaul job a lot easier for those involved.

"It's a very hot job normally, and this platform makes it a bit more pleasant for the men," he said.

"But perhaps the most important aspect of it is the time saving. What used to take almost a week now only takes several hours."

Another big winner in the suggestion scheme stakes was John Dabros, a boilermaker at Morwell Briquette and Power.

John was awarded \$2000 also for his modification to the spill skirts on the station's conveyors.

The skirts are normally fastened along



John Dabros

the edge of the chute at conveyor transfer points, and are designed to reduce coal spillage as the coal drops from the top conveyor to the lower one.

The existing method of fixing the skirts at present involves a series of bolts which have to be loosened to adjust the skirts as they wear. However, the bolts often seize and have to be cut loose and replaced — a very time-consuming job.

John's suggestion involved the welding of plates or 'dogs' onto the sides of the chutes, which, with the help of wedges, clamp the rubber skirts in place.

The wedges are maintenance-free, and the conveyors don't have to be stopped while the adjustment of skirts takes place.

An increase of skirt life was also recorded. With the holes drilled in the skirt, only 50 percent of the skirt could be used before it had to be replaced. With the clamp method, 75 percent of the skirt could be used before needing replacement.

Apart from these major awards, a further 12 awards were made ranging from \$30 to \$150, and included six from Hazelwood, three from Yallourn W, two from Newport D, and one from Yallourn power station.



Ken Jackson



POWER GENERATION

Two changes to Science Group

Power Generation Department has taken over the operation of the Latrobe Valley air monitoring network from Research and Development Department.

And the Morwell Atmospheric Science Group, which is responsible for maintaining and operating the network, has a new officer-in-charge.

He is Max Griffin who took over from Keith Laws-Herd in early January.

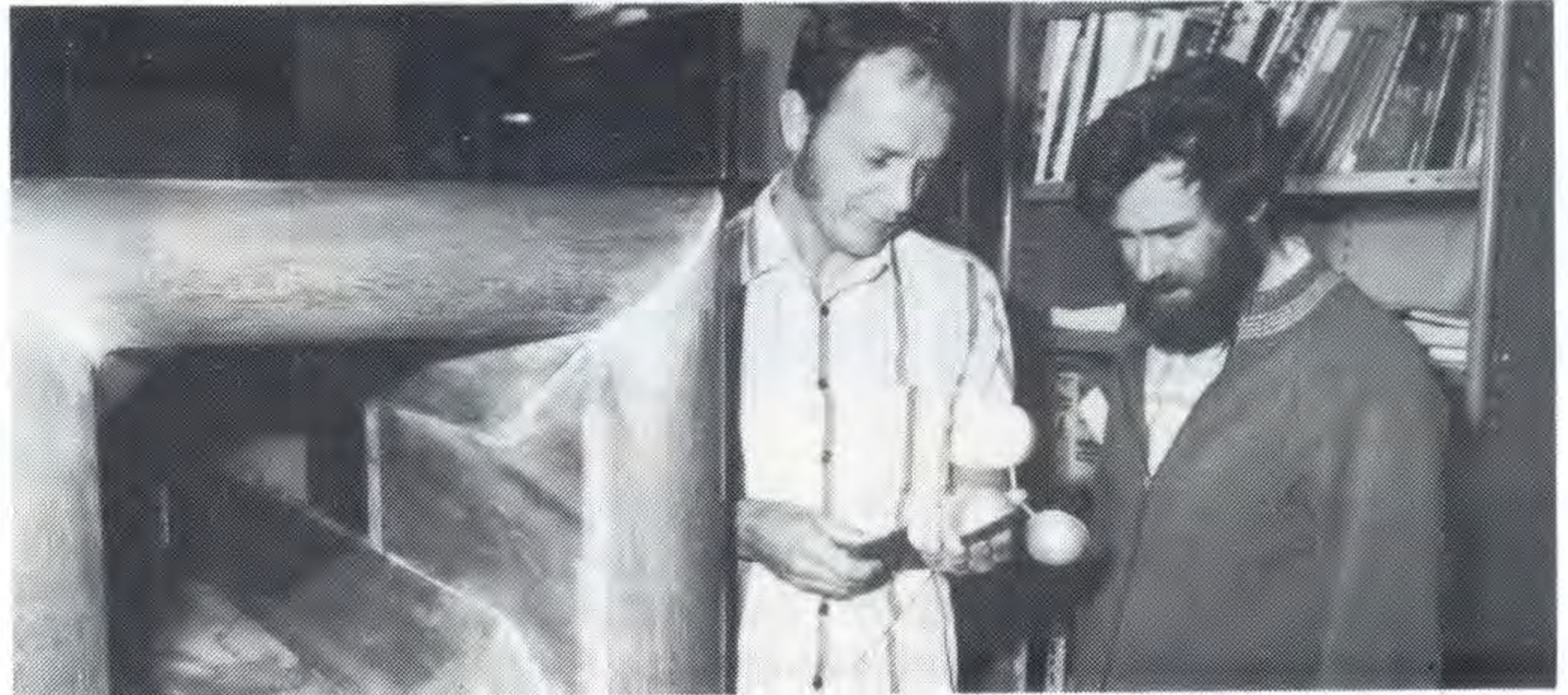
Keith, who has co-ordinated the air-monitoring program since its foundation in 1977, has returned to the Herman Research Laboratory in Richmond, but is spending this year studying for a Masters Degree in Applied Science at Melbourne University.

"Handing over of responsibilities to Power Generation will have little effect on the activities of the nine-strong Atmospheric Science Group," said Max who joined the group in September 1981.

Max was initially assistant to Keith and has played a key role in the transition of the group to Power Generation Department.

Max said that after gathering data for the last few years it was now possible to test mathematical models.

"These models are used by the Commission to determine ground level concentrations of gases



emitted from power station stacks," he said.

All 19 monitoring stations under the Latrobe Valley air monitoring network's umbrella will eventually be linked up to the central computer at the Latrobe Valley Control Centre.

One of the last, a mobile station at Trafalgar North, which carries its own "interim" computer system to record data is about to be converted to a permanent station.

Of the 19 stations, covering an area from Darnum in the west to Rosedale in the east, 14 monitor air quality and make some meteorological measurements.

The Commission is responsible for managing 16 of the stations while the Environmental Protection agency is responsible for the remaining three — Moe, Traralgon

Above: New Morwell Atmospheric Science Officer-In-Charge Max Griffin (left) discussing aspects of wind-tunnel testing with Technical Services Officer Ted Allchin.

and Morwell East.

Four of the stations are fitted with 110 metre tall meteorological towers and these are sited at Trafalgar, Yinnar South, Flynn and Thoms Bridge.

One of the group's activities which brings it before the general public is the Latrobe Valley Air Quality Summary which, in conjunction with the E.P.A. is listed in the Latrobe Valley Express each Thursday.

This report keeps the public informed of the air quality throughout the Latrobe Valley.

"NEW ZEALAND HERE I COME"

Winter in New Zealand offers travellers from across the Tasman a host of activities limited to only a few locations in Australia.

And one traveller who will make the most of his three months in the snow-capped mountain country will be Ian Chitty.

Ian, a scientific assistant at Yallourn W recently won the Westpac-sponsored Victorian Young Farmers travel award.

Following a series of elimination interviews, Ian was chosen as winner from six finalists.

Ian, 22, is junior vice president of the Yinnar Young Farmers club, one of 130 in the state.

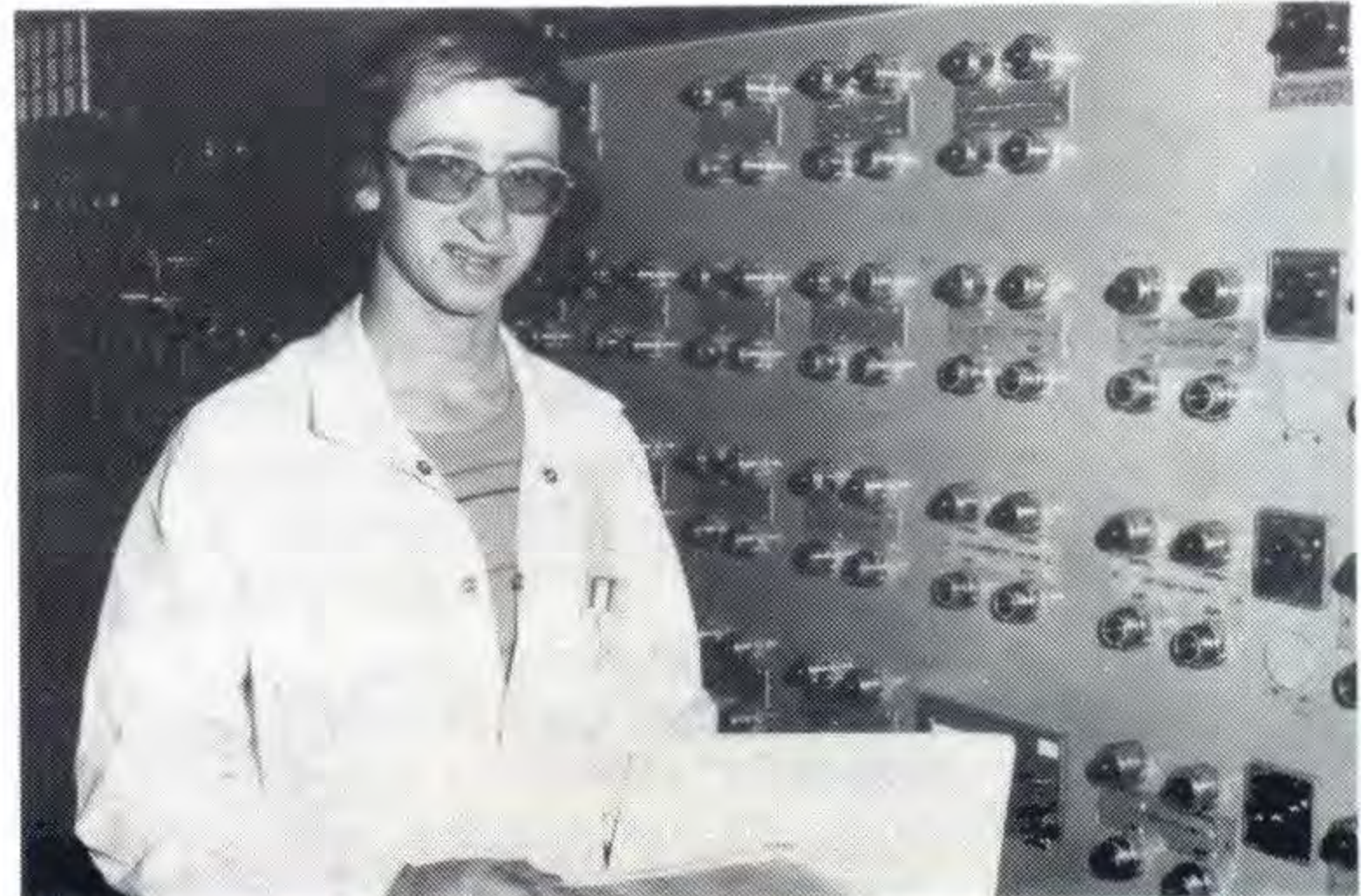
During his time in New Zealand, Ian will be hosted by members of the New Zealand Federation of Young Farmers, and will spend time in a number of selected districts on both islands.

He will give a number of talks on the Victorian Young Farmers movement and also promote Gippsland and the Latrobe Valley while over there.

Ian explained that membership of the young farmers was not necessarily determined by a farming background.

"I initially only joined for the social connections," he said. "It was a good way to meet people."

New Zealand will no doubt hold other interests for Ian. As an avid motorcyclist and committee member of the Gippsland register of the Motorcycle Riders Association, he may have an opportunity of sampling some of the challenging mountain roads of the country.



Ian at work in the more familiar surroundings of the Yallourn W water treatment plant, which will have to get along without him for three months.



TRANSMISSION OPERATIONS

Bob's blood worth bottling — 100 times

Every two years Bob Scorse completely changes his blood supply, and so far he's completed 12½ such changes.

Earlier this month Bob, an electrical operations officer at Yallourn, donated his 100th pint of blood, and it's taken him 25 years to get there.

In doing so, he's become the Latrobe Valley Hospital Blood Unit's first "century".

Bob began his donating career as an apprentice at Yallourn central workshops, when the Latrobe Valley Hospital was the Yallourn Hospital.

The workshops had always been very active in canvassing for donors, and Bob decided to contribute.

Since then, a pint of his life's blood has been extracted from his arm once every three months.

And his two sons, Robert junior and Richard are following in the same vein.

Robert, an apprentice electrical



mechanic in the Morwell open cut, and Richard who works with the Latrobe Valley SEC Credit Union have a bit of catching up to do with their respective donations of three pints and one pint.

But being a blood donor must have something to do with the fabled fountain of youth.

"I guess I'll start on my second hundred now," said Bob.

Above: "Beginner" blood donors, Richard (left), and Bob junior, watch their expert father at work. Bob senior was presented with a special pin following his 100th pint donation by Sister Marie Smith of the Blood Bank.

New Yallourn exchange up and running

The new Commission telephone network in the Latrobe Valley is almost complete with the changeover of the old Yallourn telephone exchange to a fully automatic system.

The changeover took place last month.

The new exchange, using some of the most advanced equipment in the world, was brought into service on March 19 and replaced the electro-mechanical system that had been in operation for 26 years.

Acting Communications Major Projects Engineer Alan Wilson, said the Yallourn 'cutover' had almost completed the Commission's plans to create a state-wide communications network.

"The remaining electro-mechanical exchange is at Hazelwood power station but there are no plans to update that in the immediate future," Alan said.

The facilities that the new Yallourn exchange can now provide are identical to those offered by the Morwell exchange which was

changed over in March last year.

"The Commission's Victoria-wide manual telephone system was changed over in July and Loy Yang joined the new system soon after," Alan said.

According to Alan, Tests and Communications Section and Electrical Services Section personnel had worked 'flat out' since October to complete the changeover. This included rewiring more than 1 400 extensions connected to the old Yallourn exchange.

A separate operational switching

unit back-up system was also installed at Hazelwood power station and Yallourn for key operations personnel in case of a communications failure.

Alan said the day labour gangs from Civil Works Yallourn had also worked magnificently completing necessary building modifications for the new equipment.

But the changeover is not yet fully complete. Said Alan: "Although the new exchange is operational the fine tuning of equipment will take another 12 months."

66kV works gearing up

Development of the four 66kV lines from Morwell to Loy Yang and associated works are progressing steadily.

Of the four feeders, two are already in service, and two are scheduled for service in June this year.

Associated work includes a third 230/66kV transformer and the construction of a new 66kV switchyard.

The new yard is physically

separated from the existing yard by about 100 metres. This is designed to aid security of installations and to prevent against total supply failure in the event of a catastrophe, such as a plane crash.

A further security measure involves the spreading of Loy Yang, Morwell South and Morwell North open cut sub-stations and Yallourn power station 66kV circuits between both 66kV switchyards.



Unit two electrical system ready to go

Loy Yang's unit two Station Electrical System has met its final target date and is now green for go.

The completion of the SES for unit two and plant common to A station was achieved early April when the SEC's ash pond switchboards were energised.

Construction power will continue to be gradually phased out as more SES supplies are introduced.

The system is controlled from the control centre which was recently handed over to operations.

Commissioning work on the SES began mid-June last year and the system was progressively handed over to SEC operations personnel in a series of ten stages.

Contractors Siemens, Barker and Taylor, Brown Boveri and Email have installed a total of 48 switch boards to power unit two and common plant equipment.

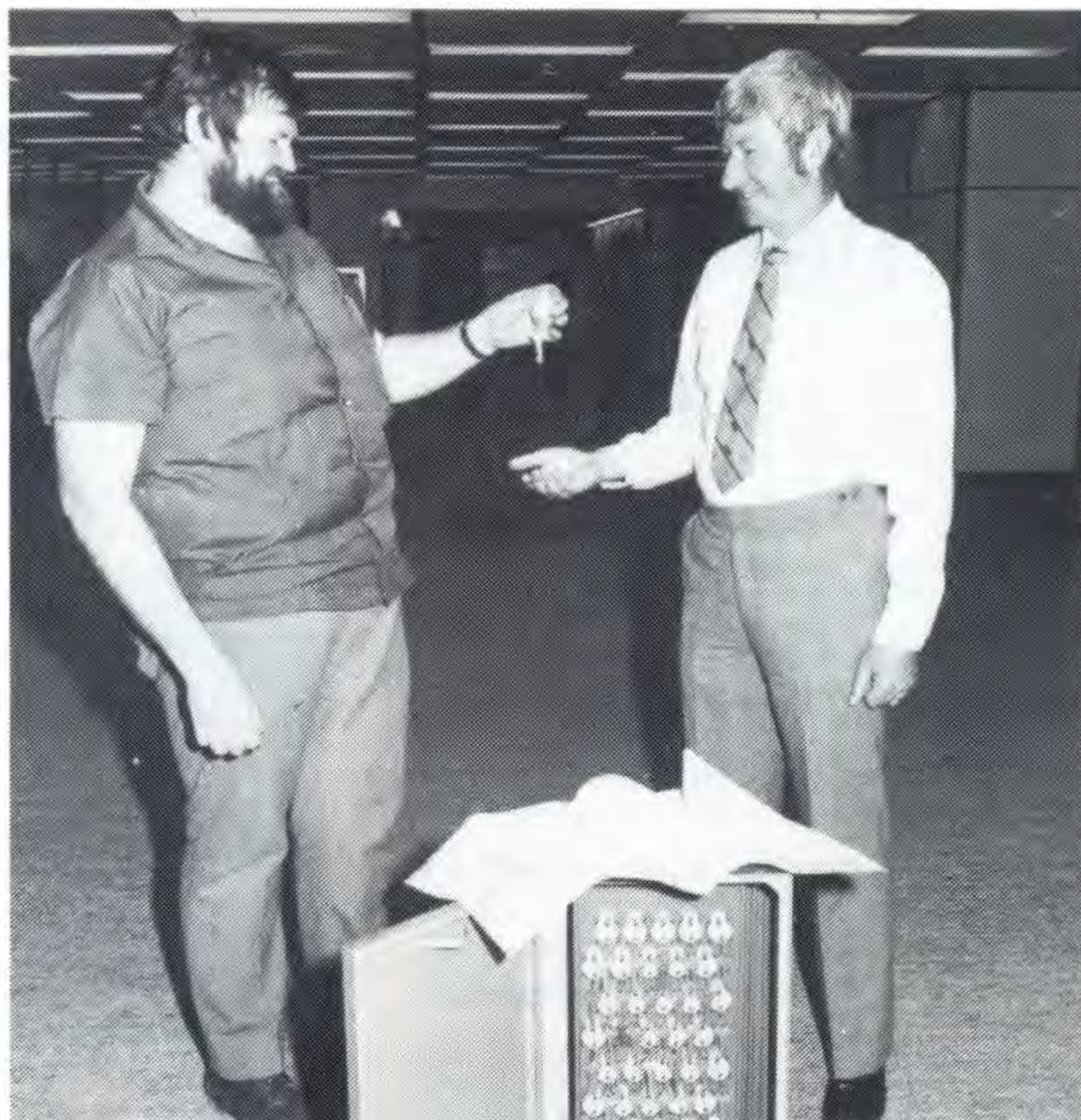
A total of 32 transformers have also been installed and Siemens has laid about 400 metres of power cable to date.

The contract, which was under supervision by Commission Construction Officers Brian Quan and Bob Cook, was on schedule throughout its nine month period.

SEC Commissioning engineer was Peter Dyer.

The SES, which will provide power for auxiliary lighting and emergency supplies, is supplied from Morwell.

Transmission lines bring 66kV power to Loy Yang where it is reduced by transformers to 11kV, 6.6kV and 415 volts.



Meanwhile, work on unit one's SES has started and completion is scheduled for mid-October.

All but two of the transformers have been installed.

Above: Commissioning Engineer Brian Gladman hands the unit two keys over to Loy Yang Power Station Superintendent, Laurie Culph.

Loy Yang fire team gears up



The Bushfire danger season may be over at Loy Yang but the construction site's bushfire fighting team has never been in better shape.

The entire operation has been reorganised and enlarged with next summer's fire season already in mind.

The reorganisation has taken place since the near-disastrous fire of February 8 when a blaze, which began west of the Traralgon Creek Road, came within a hairs-breadth of destroying the Commission Site

Services Division offices.

The new-look fire fighting organisation includes two primary crews formed from the Commission's Communications and Soil Laboratories personnel, with another 20 crews raised from a wide range of Commission Construction personnel. Each crew has four members.

More than 80 Construction personnel are currently in training with the NSCA and Commission Fire Officer, John Smith. These personnel, many of whom have wide experience in fire fighting, have been formed into various

truck crews, ground crews and miscellaneous teams.

As the Construction Engineer, Site Services, Graham Teese is responsible for fire protection for that portion of Loy Yang Project not under the operational control of Coal Production Department.

He is the new "Proper Officer" for Loy Yang project and as such he is responsible for the issuing of all permits to weld, cut or grind steel on Total Fire Ban Days.

Mark Taylor, Construction Services Superintendent is responsible for organising and training fire crews and is Fire Boss in charge of a fire in his area of responsibility.

Graham Davidson is Fire Officer in Site Services Division with responsibilities in fire fighting and fire hazard reduction.

Mark explained that the new organisation was divided into two fire fighting groups which would be on duty on alternate Total Fire Ban days.

Some of the members of the construction site's bush fire fighting team receive instruction. Planning has already started for next summer.

Graham bridges the arts and sciences gap

Traditionally, science and the arts have been placed at opposite ends of the scale, and it has taken people like Leonardo Da Vinci to show that the two areas are not mutually exclusive.

Many years after Leonardo, former Commission Station Chemist Graham Longmore is also demonstrating that the precise nature of science and the aesthetics of drawing can indeed be present in the one person.

Graham, who was a Station Chemist with the Commission for almost 20 years, has completed a series of 12 ink sketches of the old Yallourn township and is about to release the second six of the series as high quality lithographic reproductions.

The first six in the series were released late last year.

"I've been thrilled with the response to the reproductions," said Graham, who now lives in an old Yallourn house located at Tyers with his wife Margaret.

But Graham's artistic bent goes back much further than the Yallourn days.

"I always had the ability to draw, but at times didn't devote a lot of effort to it.

"The only formal work with drawing I ever did was during my time at High School — the rest was purely the result of the ability I had," he said.

It was in Paris during early 1980 that Graham began to draw in earnest, but it wasn't the struggling-artist-living-in-the-garret existence for him.

"Margaret and I wanted to go overseas and live, to experience how the other half lives, and we'd saved up for it.

"However, we did odd jobs around the place to supplement our money, and one day I sketched a friend's house. Pretty soon after, a couple of commissions came in from other people who wanted their houses done."

"We were living in Montmartre, an inner suburb of Paris which was a haven for artists.

They used to sit along the sidewalks drawing all sorts of things, and I found the atmosphere very stimulating for my own drawing.

"I suppose being surrounded by centuries of history really helped."

"When we returned to Gippsland, Margaret suggested draw a selection of Yallourn buildings before the town disappeared."

Graham said that it was his drawings of buildings and vintage cars that the ends of the art/science spectrum were probably closest.



"Where the sciences demand very precise measurement, I suppose there is a relationship to my drawings in that the work is very exacting — quite similar to the laws of science."

Graham also does portraits of children and animals and he usually works from photographs after spending a lot of time with his subjects in the case of children.

"I need the time to get to know their character — it doesn't always come across in photographs," he said.

"But its with buildings and motorcars, where I prefer to work in front of the objects, that I feel very comfortable. I have a natural feeling for perspective."

Graham now devotes the majority of his time to drawing.

"The first question people ask me is 'Am I making a living?' "

"I suppose it all depends on what you call a standard of living — but for Margaret and me it's sufficient."

Graham has now called tenders for the 12 original drawings he did of Yallourn buildings.

"I suppose I could've simply taken them out of their frames and put them away in a folder, but with so much interest generated by them it seems a shame to deprive someone who might want them of having them."

Any enquiries can be directed to Graham on 91 8301.

Graham doing what he likes best where he likes best doing it — drawing at home in his renovated old Yallourn house.

Projects aiding L.V. aged almost finished

Two projects begun last year to provide nursing home and hostel accommodation for elderly Latrobe Valley residents are now well on their way to completion.

They are the Latrobe Valley Village Hostel and the Central Gippsland Hospital Nursing Home.

Chairman of the Latrobe Valley Village, Mr. Ted Scott, of Newborough said that the project was presently ahead of its program and would be finished on, if not before, the programmed date.

"We expect the first intake of about 30 residents sometime during July — by that time all our staffing

requirements will have been met," he said.

"However, we still need about \$60 000 to furnish the building."

"We've received tremendous help from individuals and organisations throughout the district — particularly the Latrobe Valley Consultative Committee, the City of Moe and the Department of Social Security. Without their help we couldn't have progressed to the stage we are now. The actual construction side of the project is totally funded, but the furnishing shortfall is a bit of a problem."

Mr. Scott said the Latrobe Valley

Queen Quest entrants were making donations to the project from their fund raising efforts and plans were being discussed to make application to a number of available trusts.

"Through these avenues we hope to reduce the outstanding amount," he said.

The Central Gippsland Nursing Home Society is progressing well since contractors C.R. Cadby Construction Pty. Ltd. of Warragul began work just prior to Christmas.

The nursing home which faces Garden Grove, is beginning to take shape.

Structural walls are finished, faced

● Cont. page 14

Service Register

Commission staff and wages personnel who reached significant service milestones during April are included in this register

25 YEARS

John Kulinich
George Jeffrey
Kenneth McDonald
Bruce Wright
Lionel Chewe
Marcel Preston
John Lawson
Jaime Vazquez
Fred Jervis
William McGavin
Charlie Marshall
Lawrence Felici

Secretarial
Morwell Open Cut
Yallourn Power Station
Hazelwood Power Station
Headquarters, Coal
Civil Works, Yallourn
Civil Works, Yallourn
Electrical Workshops, Morwell
Yallourn Open Cut
Central Workshops, Yallourn
Transport Workshops, Yallourn
Yallourn Power Station

30 YEARS

Reginald Waldon
John Matthews
John Knight

Hazelwood Power Station
Central Workshops, Morwell
Yallourn Power Station

31 YEARS

Mark Rolls
Umberto Penco
Herbert Beilharz
Stribrand Gompelman
Josef Titulaer
Fred Wissmer

Yallourn Open Cut
Yallourn Open Cut
Yallourn Open Cut
Yallourn Power Station
Civil Works, Yallourn
Yallourn Open Cut

32 YEARS

Stan Margetts
Ralph Harvey
David McNichol
Frank Collins
Joseph Krawec
Henryk Michalowski

Transmission Operations
Electrical Workshops, Morwell
Morwell Briquetting and Power
Morwell Briquetting and Power
Yallourn Power Station
Area Lines, Yallourn

33 YEARS

Bill Beckman
Norm Bayley
Joseph Grima
Roy Kilmartin
Joseph Farrugia
James Clark
Jacob Tosin

Distribution Lines
Stores, Morwell
Yallourn Power Station
Yallourn Power Station
Yallourn W Power Station
Yallourn W Power Station
Yallourn W Power Station

34 YEARS

Lindsay Ryan
John Slattery
Walter Joyce
Robert Pollock
John Abbott
Jim Frost
Norm Wilson
Jim Webb
Bill McAulliffe

Yallourn Open Cut
Yallourn Open Cut
Yallourn Open Cut
Hazelwood Power Station
Hazelwood Power Station
Finance
Materials and Services
Civil Works, Yallourn
Morwell Open Cut

35 YEARS

Ray Draper
Ron Grant
Ray Nestor
Len Sidebotham
Kevin Cox
Dennis Harris

Headquarters, Coal
Yallourn Open Cut
Yallourn Open Cut
Yallourn W Power Station
Yallourn Power Station
Hazelwood Power Station

36 YEARS

Col Grix

Transportation

42 YEARS

Ray Cousins
Bob Gardiner

Yallourn Open Cut
Yallourn Power Station

● Cont. from page 13

Projects aiding L.V. aged almost finished

brickwork is well advanced and the roof is nearing completion.

The 20-bed nursing home will feature quiet areas where residents may sit outside and still be part of the activities surrounding them without being imposed on.

A sheltered area is also planned with direct access from the home proper. It will allow residents to enjoy the sun, while at the same time, protect them from the wind.

Central Gippsland Nursing Home Society President, Mr. Tom Furlonger, said with the assistance of both State and Federal Governments, as well as the local community, the overall costs of the project would well be covered.

"A total of \$692 000 has been granted by both State and Federal Governments and most of the \$405 000 pledged by the local community is being honoured as it falls due."

"However, it must be remembered that the Commonwealth subsidy

● Cont. from page 2

Review of land acquisition

"The Government is involved in acquisitions right across the State, not only around the metropolitan area, but also in areas like the Latrobe Valley.

"The present law is totally inappropriate for modern circumstances, including inflation, town planning and transport needs."

Mr. Walker said the report was not Government policy and before legislation could be drafted later in the year, there would need to be considerable public involvement.

Mr. Walker said comments or submissions on the report could be sent to him at the Department of Planning until May 31.

is only available if we meet the full amount of the balance from the local community."

"We are extremely pleased with the progress of the project and expect the home to begin operation during the latter part of this year."

● Cont. from page 7

Commission — sponsored study a "first"

The Commission has already made some of the study findings available to the Ministry of Conservation to help frame the State Environmental Protection Policy for the Latrobe River.

Neville said the study, now in its draft form, could be released for public comment as early as June.

"It will become a reference work for any similar study that is undertaken in Australia," he said.

FOR SALE

1974 H.Q. Premier Station Wagon. Fully reconditioned and worked 308. T-Bar Auto. Re-upholstered interior, sunroof, tinted windows. Cassette player, Equaliser and four speakers. Dragway mags and B.F. Goodrich T.A. Burgundy in colour. For further information phone: (051) 74 5456.



retirements



Charlie Prust

Charlie recently retired from the Commission after 30 years service. Charlie joined the Commission as a boilerhouse engineer at Yallourn power station in 1953 and retired from the position of Workshops Superintendent Headquarters.

At an afternoon tea with colleagues he was presented with a handyman's workmate, a jig saw and several video tapes by Manager Engineering Services Don Bromilow.



Ken Harvey

Ken Harvey was presented with a wallet of notes when he retired from the Commission after 29 years. He was farewelled by workmates at a function at the Parkside.

Ken joined the Commission in 1954 at construction in Yallourn, and retired as Spare Equipment Officer at Yallourn. As well as planning a trip to Cape York Peninsula sometime in October, Ken is also very keen to become involved in local affairs in Drouin and to keep up his gardening and lawn bowls.



Ellis Johnson

Ellis Johnson recently retired from the Commission after 42 years service. He joined in 1941 as a metal trades laborer and retired as a temporary tool storeman. Assistant Chief Engineer Transmission Operations Ian McDonald presented Ellis with a wall clock, a radio cassette player and a whipper snipper.

Ellis plans to tour Queensland when he takes delivery of his new car which is presently on order.

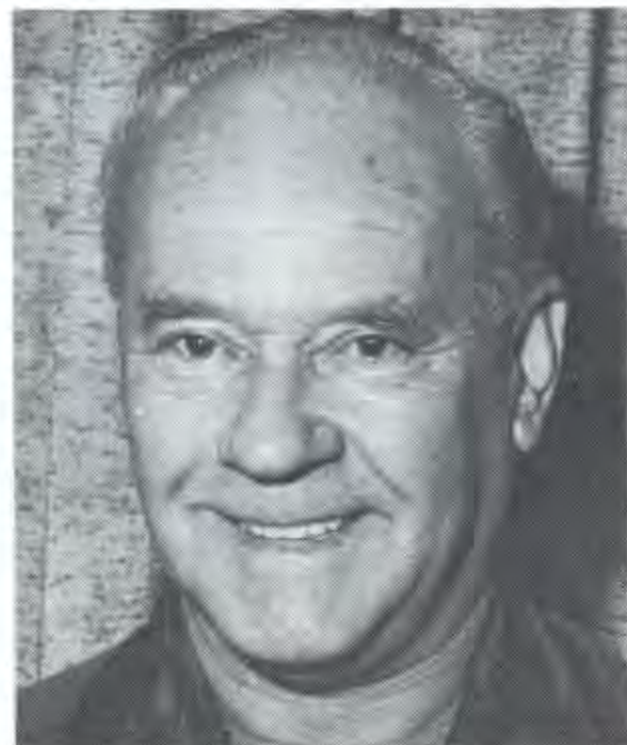


Jim Knowles

Jim Knowles recently retired after 41 years with the Commission. He joined in 1941 as a junior clerk and retired from the position of Co-ordination Engineer, Coal Production Headquarters Division.

Coal Production Manager Jack Vines presented Jim with a gas barbecue and a camera lens, and presented his wife with a bunch of flowers.

Jim intends to concentrate on his hobbies of flying and photography.



Bill Plimbley

Bill Plimbley had a cup of tea with Morwell Briquette and Power Superintendent Cyril Morellato when he retired from the Commission recently. Bill joined the Commission in 1963 with General Services, Morwell, and retired as a mechanical plant driver.

Bill was presented with a cheque, and intends to stay in the area with the occasional trip away to Coffs Harbor — a favorite getaway.



Ken Woff

Ken Woff was presented with an exercise bike, a table tennis table and a camera by Area Administration Manager John Hutchinson when he recently retired from the Commission after 43 years service.

Ken joined the Commission in 1939 as a junior clerk in Geelong. He retired from the position of property officer. An excellent table tennis player, Ken will no doubt keep up his game, while also using the exercise bike to advantage also.



Les Kite

Les Kite recently left the Commission on leave prior to his retirement from the Commission in July. Les joined the Commission more than 40 years ago as a junior draftsman in Yallourn and retired from the position of Engineer with Power Generation Headquarters. Les intends to devote as much spare time as possible to his golfing and musical interests.



Gerald Morrissey

Gerald Morrissey recently retired from the Commission after more than 23 years service. Gerald joined the Commission in 1959 as a motor driver with Municipal in Yallourn, and he retired as a bricklayer with property services at the same location.

Retirement photographs

In order to make sure that coming retirements can be booked with the Yallourn photography section for the necessary photos, could those in charge of retirement arrangements please make sure that the photographic booking is made no later than two days before the event.

With any bookings made later than that, there is no guarantee that the photographer can attend.

Direct all retirement photograph inquiries to extensions 3228/3552.

FOR SALE

TEAK 4300S Reel to Reel. Auto reverse with six inch reels. Separate input/output volume controls. Small amount of maintenance will see unit in better than new condition. Phone 3228/3552.



SPORT



Veterans club together in new association

Retired Commission employees are playing key roles in teeing up the West Gippsland Veterans Golf Association.

Traralgon Golf Club member Col Bolitho, the former senior transport maintenance officer with the Gippsland supply region, is the new association's first president.

New secretary-treasurer is ex-transmission engineer (Co-ordination and Training) Arthur Brogan, a member of the Yallourn Golf Club.

And first Veterans captain is Des McLean, the former transportation officer with area services.

Yallourn Golf Club captain Jimmy Irving — formerly senior draftsman, mechanical at the Yallourn drawing office — is a committee member.

The idea of a Veterans Association was first moved at the annual meeting of the West Gippsland Golf Association last December.

Yallourn W construction Commercial Administration Officer, Matt English was appointed liaison officer at that meeting and asked to report back on the feasibility of organising a Veterans Association.

Matt said the conditions of membership of the Association are:

- Members must be 55 years old or over.
- They must hold amateur golf status.
- They must be financial members



of a club affiliated to the Victorian Golf Association.

Matt, who has been an active golfer for 36 years, said there has been a keen response to the idea.

"It is the most exciting golf development in West Gippsland in recent years. We are looking at a membership of at least 100," he said.

Officers for the new Association were elected at a special meeting held in late March and it is hoped to hold monthly golf days at each of the nine West Gippsland golf courses.

Above: Veteran's Golf Association liaison officer Matt English busy promoting the new association.

Successful year for LV yacht club

The Latrobe Valley Yacht Club is slowly winding down its season following a hectic although highly successful 1982-1983 season.

Among the big events conducted by the club was the hosting of the Victorian Kitty Catamaran State Championships and the International A-Class Victorian Titles.

And it was Latrobe Valley Yacht Club members who shared in the spoils of victory.

Paul Schoeldeman and crew Doug Veldman won the Kitty cat title, and Jim Legg and Eric Veldman took out second place in the A Class and Arrows respectively.

As well as these events, many individual members contested events and series away from the district and met with mixed success.

Activities coming up towards the very end of the

season include the annual 'Sauna Sail,' Annual General Meeting and the Presentation night.

Club Commodore Rod Bennett (MBPI Assistant Superintendent) said it had been an extremely busy year.

"When you consider the club hosted a couple of state championships, almost completed building the clubhouse extensions, and held many other club activities, you can't get a much more concentrated year than that," he said.

"In particular, the clubhouse effort was a tremendous achievement. It took a little over 12 months for the whole job to be done with only volunteer workers. All that's left now is a bit of general finishing and tidying up to be done."

"I'd like to thank everyone for a magnificent effort."