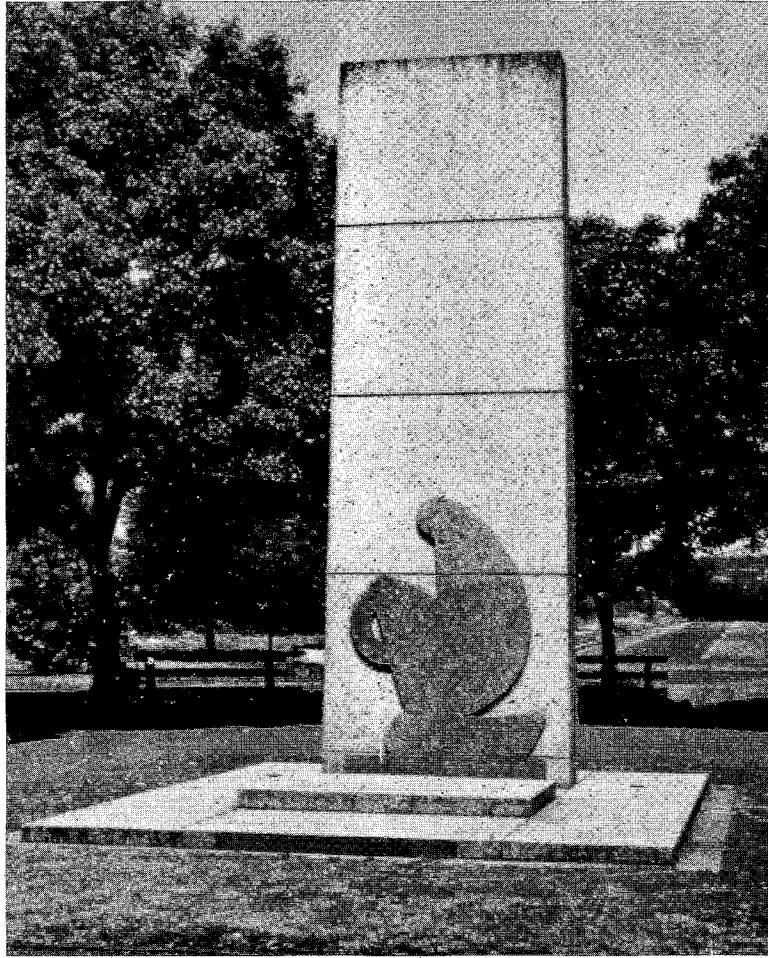




Back
to
Yallourn
1961

Souvenir
BOOKLET



“Lest we forget”

On returning to scenes of previous work and residence after a lapse of many years, there is always a liability to disappointment because of friends who have departed and scenes which have changed.

I am confident, however, that any such sense of regret on the part of our visitors will be very largely mitigated, if not entirely removed, by the changes for the better which have occurred in the intervening years.

PREFACE

By

BRIGADIER J. FIELD
General Superintendent



The Commission's undertakings here continue to be the main-stay of power and fuel supply to the State, more than 50% of the total energy supplied annually to Victoria being generated in the Yallourn Power Station. In addition, Yallourn can also claim the credit for a large proportion of energy generated elsewhere in the Commission's system by reason of the fuel supplied to metropolitan and urban power stations. The Power Station is the largest in the Commission's system and exceeds the capacity of any in the Commonwealth.

The Yallourn Open Cut continues to excite the admiration and interest of travellers from all over the world with its daily output reaching up to 40,000 tons of brown coal. The Briquettes Works continue to maintain an output of some 650,000 tons a year. All these activities are supported by ancillary establishments in the form of Workshops and Laboratories, some of which are, in fact, basic to the requirements of all the Commission's undertakings in the Latrobe Valley and to the town of Yallourn.

The State Electricity Commission is proud of Yallourn and of the interest taken in civic affairs by the citizens, many of whom, with their sons, are carrying on the good work which was begun by former residents. The continuance of this corporate spirit is vital to the work which is being done in town and works and which has always risen to meet circumstances of great emergency.

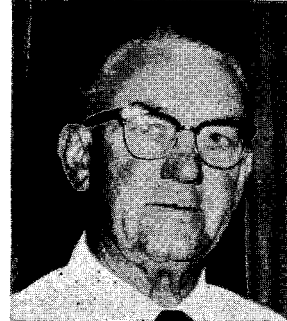
It is my hope that all who return to Yallourn during the week of the "Back-to-Yallourn" celebrations will feel warmly welcome, enjoy visiting familiar places and renew acquaintances with old friends. I trust also that they will feel a sense of satisfaction in the contribution which they have made to this great undertaking, either as employees or as residents of the town in bygone years, and under pioneering conditions.

On behalf of the Commission, I extend to them a warm welcome and assurance that we will be happy to make inspection facilities available to any visitors desirous of visiting the works area.

THIS PAGE SPONSORED BY:

MR. C. V. COOK, Jeweller, Centreway, Yallourn

Foreword



This, the first "Back-to-Yallourn" celebration has been organised to meet a desire, so often expressed, to renew acquaintance with the people and scenes within this lusty infant town and also, to give its present residents an opportunity to say "thank you" to those able pioneers who so well and truly laid the foundations of the town and of the mighty enterprise to which it owes its being.

The State Electricity Commission has much to be proud of in Yallourn and in the people who have contributed to its development.

My committee extend their warmest greetings and welcome to all ex-residents

We believe that all will be delighted to note the changes over the years.

We wish you many enjoyable re-unions with your old friends, and a very happy stay in your old town, Yallourn.

W. T. WALLACE,
President

Back to Yallourn Comm.

THIS PAGE SPONSORED BY:

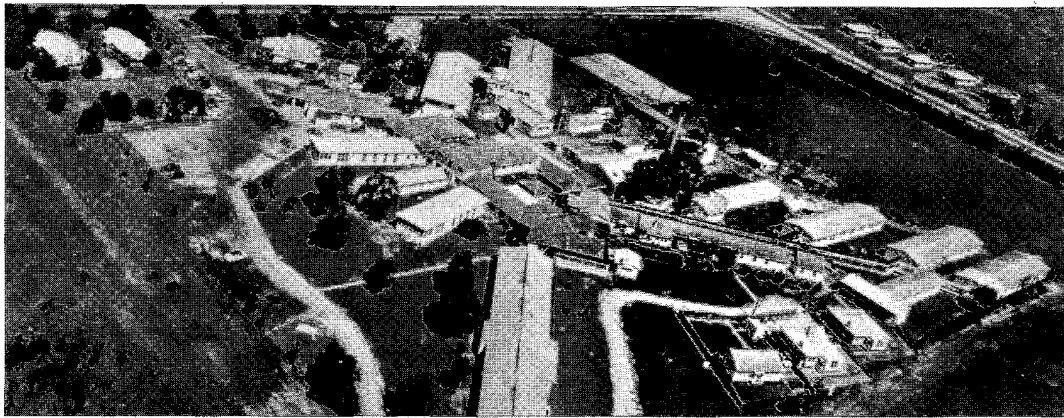
THE YALLOURN DELICATESSEN (N. & G. Byrne), Broadway, Yallourn



THE MODERN SHOPS



YALLOURN



Latrobe Valley Community Hospital

THIS PAGE SPONSORED BY:

JANNICE INFANT SALON (Mrs. M. Larkins) Broadway, Yallourn

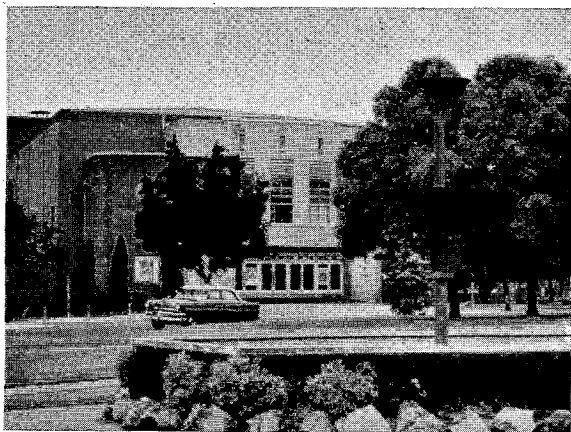


Kernot Hall

TODAY

Visitors to Yallourn during the Back-To celebrations will be surprised at the progress the town has made during their absence.

Today, the town presents an up-to-date view, with its modern shopping centre and community buildings, and on these pages are featured some important amenities in Yallourn's community life.



Yallourn Theatre



Yallourn Public Library

THIS PAGE SPONSORED BY:

G. DICKSON BROWN & CO., Yallourn Hotel, Yallourn



CROQUET



BOWLS

YALLOURN



TENNIS

IT'S SPORTS



BOATING

THIS PAGE SPONSORED BY:
YALLOURN MEDICAL & HOSPITAL SOCIETY, Yallourn



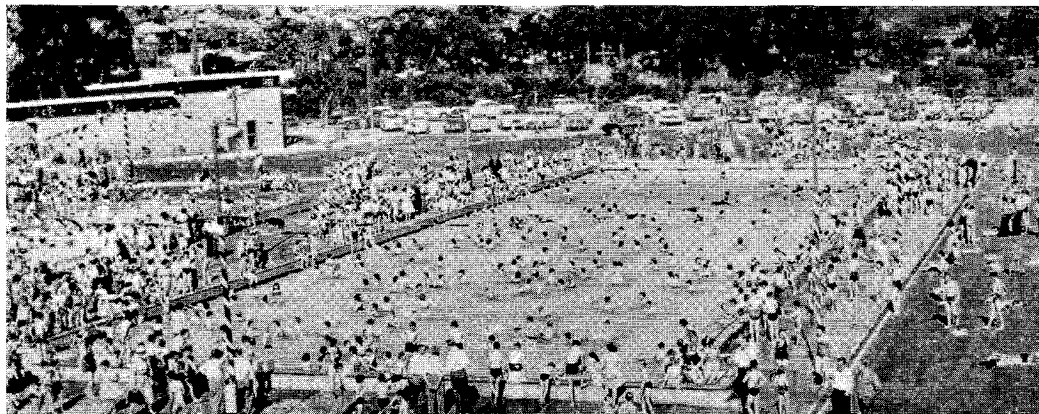
GOLF



CRICKET

TODAY

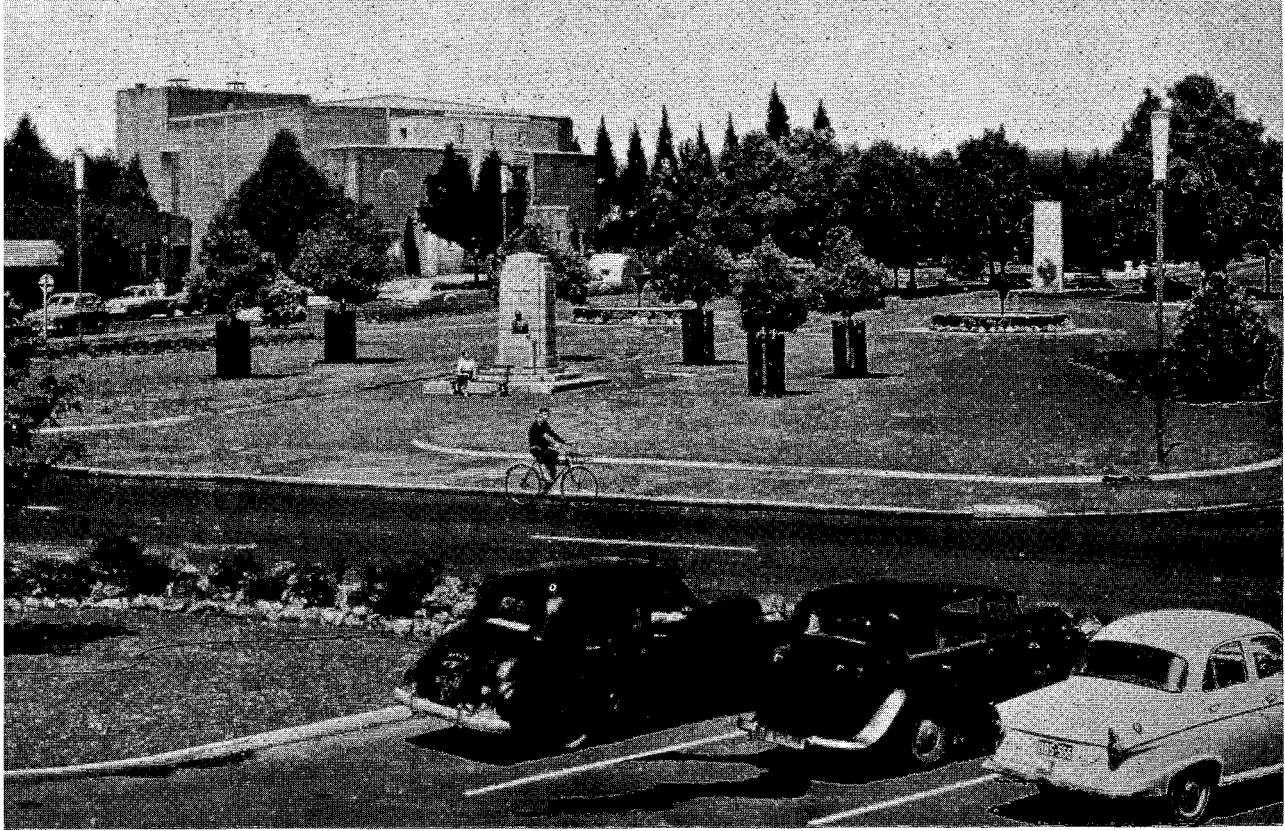
First class sporting facilities in the town cater for every type of sport. Some are on these pages.



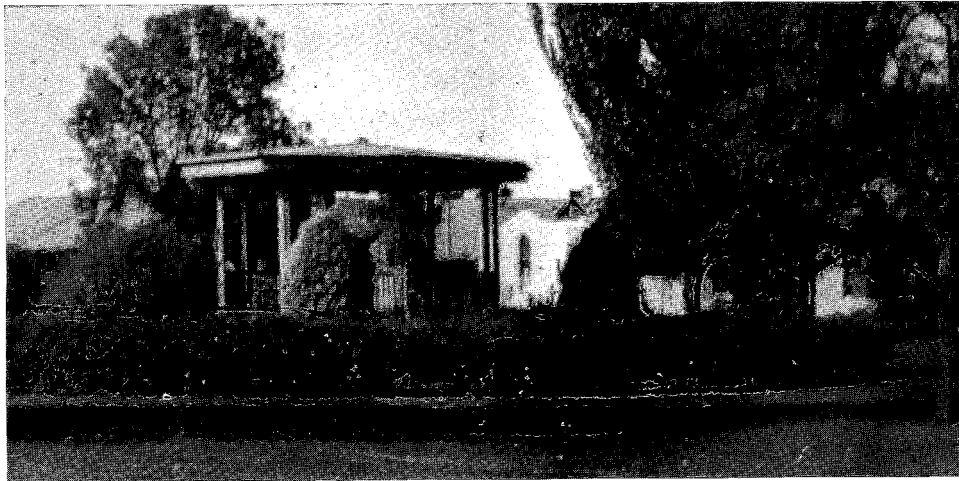
SWIMMING

THIS PAGE SPONSORED BY:

THE NATIONAL BANK OF AUSTRALASIA LIMITED



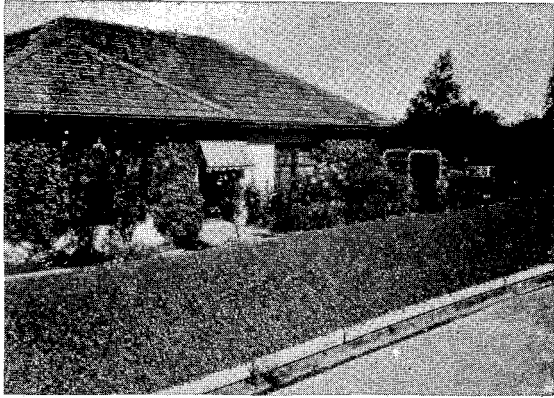
From the town's centre, Monash Square, tree lined streets radiate past houses, surrounded by gardens, parks and playgrounds.



The Band Rotunda Gardens

THIS PAGE SPONSORED BY :

L. J. PREMIER, Chemist, Centreway, Yallourn and
MISS E. M. ROSE, Chemist, Centreway, Yallourn

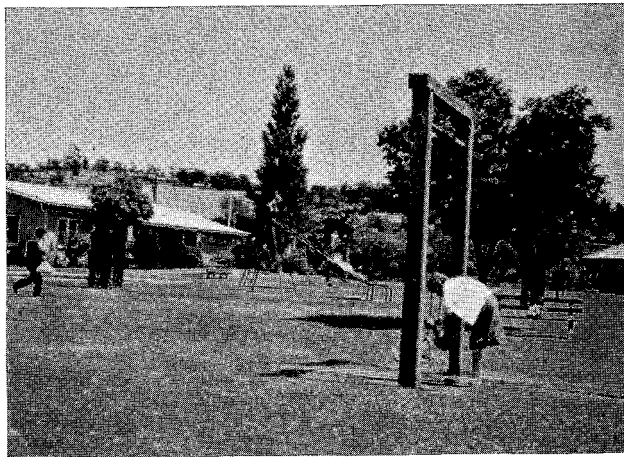


A PRIVATE GARDEN

Yallourn has always maintained its beautiful public and private gardens, in the highest standard.



YALLOURN TODAY



PUBLIC PLAYGROUND

*Its
Gardens*



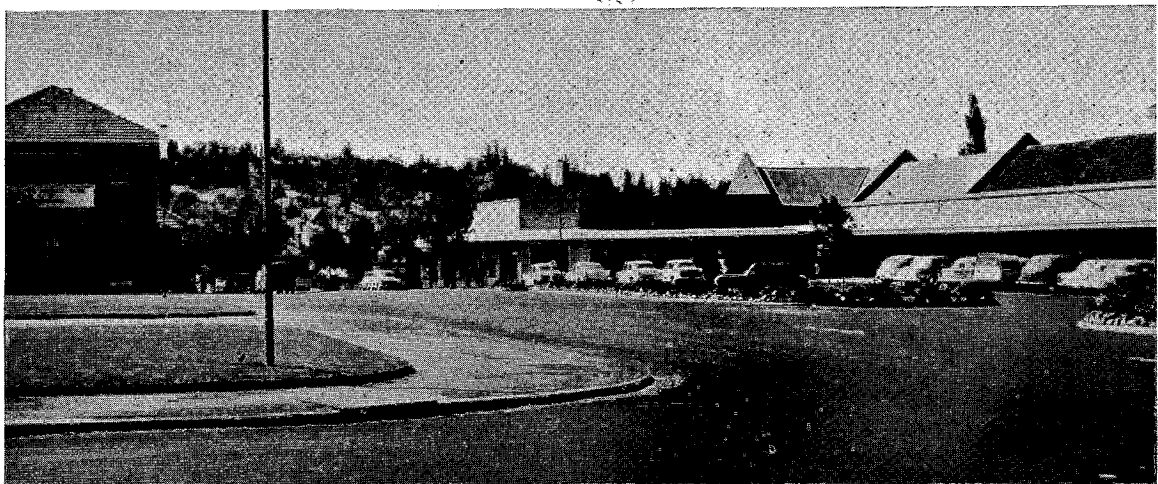
THIS PAGE SPONSORED BY:

R. FOSTER YALLOURN MOTORS



LOOKING TOWARDS GREEN STREET FROM BROADWAY —

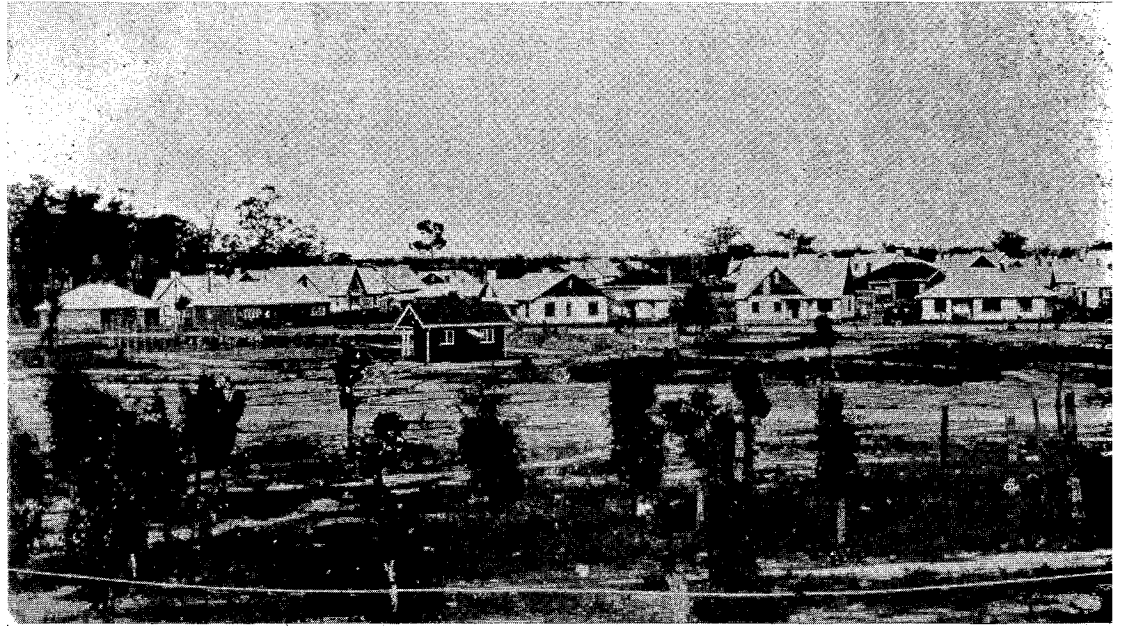
— CHANGED



CENTREWAY SHOPS TODAY

THIS PAGE SPONSORED BY:

ROCKMANS "SHOPWELL" STORE



— AND THE SAME POINT IN THE 1920's

VISTAS —



YALLOURN'S FIRST STORE BEING BUILT

THIS PAGE SPONSORED BY:

ROCKMANS "SHOPWELL" STORE

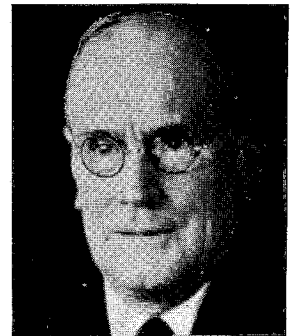


SIR JOHN MONASH

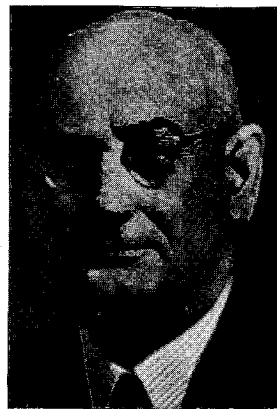
TOWN

The men who guided the growth of the mighty S.E.C. industrial project in the Latrobe Valley, created from woodland bush the township Back-to-Yallourn visitors will see during their visit.

A few of the men from Yallourn's fine



MR. R. D. DIXON



MR. C. H. KERNOT



MR. R. A. HUNT

THIS PAGE SPONSORED BY:

H. W. WILSON PTY. LTD. Yallourn

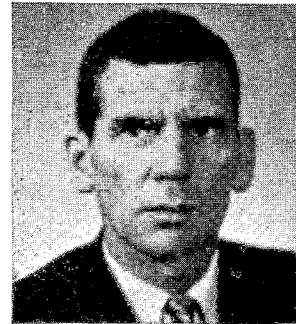
LEADERS

heritage of leadership are the ones we portray on these pages. Amongst the leaders of today are also Cr. W. T. Wallace, Cr. B. Milne, and Cr. Harries, the elected members of Yallourn Town Advisory Council.



BRIG. J. FIELD
General Superintendent

CR. T. FORRISTAL
Chairman Yallourn Town
Advisory Council
(1948 - 1961)



CR. T. B. JENSEN
Asst. Gen. Supt.



CR. A. LYNCH



Cr. J. P. Ashmead



Mr. A. J. F. Heskey
Secretary Yallourn Town
Advisory Council

THIS PAGE SPONSORED BY:

K. B. SHINE, Yallourn

Colorful . . .

Spectacular . . .

Colorful, spectacular and strenuous have been the words used to describe the historic era of the early 1920's, when Yallourn was founded.

Impressive structures were rising, homes were being built and new directions given to the destinies of those participating in the creation of the foundation projects.

**IN THE COMMUNITY LIFE OF THE PEOPLE,
CHURCH AND SCHOOL BEGAN FUNCTIONING
AND EARLY IMPETUS GIVEN TO THE MANY
SOCIAL, SPORTING AND CULTURAL ACTIVITIES
WHICH WERE LATER TO BECOME SO FIRMLY
ENTRENCHED.**

By 1924 an efficient water supply was in operation with high level storage reservoirs and purification works, recreation reserves were cleared and graded, a general store had been established in the town for the sole benefit of householders, and a four acre nursery was propagating trees to bring beauty to bare streets and to maintain general afforestation.

DETACHABLE PROGRAMME

CELEBRATIONS OFFICERS AND COMMITTEE

PRESIDENT : CR. W. T. WALLACE, J.P.

VICE-PRESIDENTS : MR. E. L. SCOTT, CR. F. HARRIES.

SECRETARY : MR. G. P. FOGARTY, 2 Tanjil Cres. Phone 6508

TREASURER : MR. H. KENNEDY

PUBLICITY OFFICER : MR. T. E. CARTER

HISTORICAL RESEARCH OFFICER : MR. C. R. CLEVERLEY

BOOKLET EDITOR : MRS. E. COLLEN

ACCOMMODATION OFFICER : MR. D. PLANNER, 6161 - 6240

COMMITTEE :

MRS. J. P. ASHMEAD, N. BYRNE, MR. R. ELLIS,
MRS. B. MILNE, MRS. O. MR. R. KROMOLOFF, MR.
NEILSEN, MRS. E. REID, J. LAMBOURNE, MR. A.
MRS. H. W. WILSON, MR. OLIVER, MR. H. W. WILSON,
MR. J. PRENTICE.

PROGR

Saturday, 25th February

AFTERNOON —

PROCESSION, PARADE OF FLOATS, OFFICIAL OPENING, DISPLAYS ON OVAL, EXHIBITION OF "LIVING" CHESS, AFTERNOON TEA (TOWN AND OVALS 1 AND 2); "MISS YALLOURN," CRICKET — COMPETITION GAMES (OVALS 3 AND 4); RIFLE SHOOT, YALLOURN RIFLE CLUB (MOE RANGE).

EVENING —

DISPLAY BY BANDS AND MARCHING GIRLS (MONASH SQUARE); "BACK TO YALLOURN" DANCE AND SCOTCH NIGHT (KERNOT HALL); DISPLAY OF "SIMULTANEOUS" CHESS.

Sunday, 26th February

MORNING —

"BACK TO CHURCH." ST. JOHN'S AT 8 A.M., 9.45 A.M., 7 P.M. ST. ANDREW'S AT 11 A.M., 7 P.M. METHODIST AT 11 A.M., 7 P.M. ST. THERESE'S AT 7 A.M., 9 A.M., 11 A.M., 6 P.M. SALVATION ARMY AT 11 A.M., 7 P.M.

AFTERNOON —

PLEASANT SUNDAY AFTERNOON — GUEST SPEAKER: SIR FRANK KINGSLEY NORRIS, K.B.E. (KERNOT HALL); SPORTS MEETING — ATHLETICS AND CYCLING (OVAL NO. 2); "LIGHTNING" CHESS EXHIBITION (EASTERN ROAD HOSTEL).

Monday, 27th February

AFTERNOON —

YALLOURN ROSTRUM CLUB MEETING (FAIRFIELD HOUSE); "BACK TO RED CROSS" LUNCH (CENTRE HALL); "OPEN DAY" (YALLOURN PRIMARY SCHOOL).

EVENING —

PLAY BY "YALLOURN LITTLE THEATRE" (YALLOURN THEATRE); TENNIS TOURNAMENT (YALLOURN CLUB COURTS); SEMI-FINALS WOMEN'S, MEN'S 'A' AND 'B' GRADE BASKETBALL (YOUTH CLUB HALL).

Tuesday, 28th February

AFTERNOON —

C.W.A. SOCIAL AFTERNOON, PRESENT AND FORMER MEMBERS (KERNOT HALL); "BACK TO SCHOOL" (ST. THERESE'S SCHOOL).

EVENING —

STREET PARADE — BAND AND MARCHING GIRLS (MONASH SQUARE) AS PRELUDE TO: PAST PLAYERS SOCIAL (YALLOURN FOOTBALL CLUB PAVILION); "PICTURE NIGHT," FEATURE FILM AND S.E.C. DOCUMENTARIES (YALLOURN THEATRE).

Wednesday, 1st March

AFTERNOON —

KINDERGARTEN "OPEN DAY" (YALLOURN KINDERGARTEN); TECHNICAL COLLEGE "OPEN DAY" (YALLOURN AND NEWBOROUGH SECTIONS); CROQUET TOURNAMENT (YALLOURN CROQUET CLUB).

EVENING —

REVUE BY "YALLOURN THESPIANS" (KERNOT HALL); SEMI-FINALS WOMEN'S, MEN'S 'A' AND 'B' GRADE BASKETBALL (YALLOURN DRILL HALL).

RAMME

Thursday, 2nd March

AFTERNOON —

GOLF CLUB ASSOCIATES' GUEST DAY AND TEA (YALLOURN GOLF CLUB).

EVENING —

HISTORICAL PAGEANT (KERNOT HALL).

Friday, 3rd March

EVENING —

RAIWEENA CLUB, SOCIAL FOR FORMER MEMBERS (CENTRE HALL); CABARET BALL (KERNOT HALL).

Saturday, 4th March

MORNING —

DISPLAY — BAND AND MARCHING GIRLS (MONASH SQUARE).

AFTERNOON —

HORTICULTURAL SHOW (FIRE BRIGADE HALL); "BACK TO SCHOOL" (YALLOURN HIGH SCHOOL); GIPPSLAND SWIMMING CHAMPIONSHIPS (YALLOURN OLYMPIC POOL); CRICKET SEMI-FINALS (OVALS 1, 2, 3, 4); "BACK TO YALLOURN" GUEST DAY (YALLOURN GOLF CLUB); RIFLE SHOOT, YALLOURN RIFLE CLUB (MOE RANGE).

EVENING —

CONCERT: YALLOURN ORCHESTRAL AND CHORAL SOCIETY, YALLOURN BAND (KERNOT HALL); HORTICULTURAL SHOW (FIRE BRIGADE HALL); PRELIMINARY FINALS: WOMEN'S, MEN'S 'A' AND 'B' GRADE BASKETBALL (YOUTH CLUB HALL).

Throughout the "Week" the following exhibitions will be open:

- "Memory Hall" — "Orana," Old People's Club, Office Place
- "Art & Photographic Exhibition" — Community Activities Room, Library Building

The privileges of Honorary Membership throughout the week will be extended by the Yallourn Bowling Club, Yallourn Croquet Club and Yallourn Golf Club to visitors who are members of clubs elsewhere. The Yallourn Tennis Club invites all "Back to Yallourn" visitors to use the facilities of the Club free of charge.

ORGANISATIONS TAKING PART

State Electricity Commission

Country Women's Association

Red Cross

Latrobe Valley Comm. Hospital

St. John Ambulance Brigade

Raiweena Club

Thespians Dramatic Society

Little Theatre Dramatic Society

St. John's Missionary Auxiliary

Catholic Women's Social Guild

Recreation Ground Board of Trustees

Silhouette Jazz Club

Power Station Social Club

Y.M.C.A. Chess Club

Football Club Past Players' Assoc.

Hospital Camera Club

Art Group

Technical College

High School

Primary School

St. Therese's School

Kindergarten

Youth Club

Marching Girls

Boy Scouts Association

Girl Guides Association

Public Library

Fire Brigade

Orana Elderly Citizens Club

Orchestral and Choral Society

Horticultural Society

Chamber of Commerce

Rockmans General Store

Old People's Welfare Committee

Yallourn and District Band

Salvation Army

Methodist Youth Fellowship

Amateur Athletic Club

Cycling Club

Bowling Club

Golf Club

Cricket Club

Tennis Club

Swimming Club

Croquet Club

Rifle Club

Amateur Basketball Association

The story of Yallourn began from 20 to 50 million years ago, when luxuriant sub-tropical vegetation flourished over the large swampy area which was once the Latrobe Valley.

Sluggish rivers carried vegetable debris into quiet lagoons and marshy hollows, where it lay rotting, before finally sinking. This debris was the original brown coal material.

Through subsidence and earth movements, with sand, gravel and mud filling embryonic coal deposits, the basis of the Valley's wealth and the future site of Yallourn was determined.

ALTHOUGH BROWN COAL WAS DISCOVERED IN THE LATROBE VALLEY IN 1874, IT WAS NOT UNTIL 1920 THAT THE NEWLY CONSTITUTED STATE ELECTRICITY COMMISSION OF VICTORIA BEGAN ITS LARGE SCALE DEVELOPMENT.

From the area of five miles originally acquired in those early days by the Commission, an area of nearly 14 square miles is now controlled in the vicinity of Yallourn.

The town of Yallourn was visualised and planned at the same time as work began on the nearby power station, open cut and briquette works. It formed an integral part of the undertaking.

As excavation for the open cut grew deeper and spread out, the structures of the power station and briquetting factory, of stores, workshops and administrative buildings were rising nearby.

These operations were begun in open bush country where there were no facilities for housing, recreation or entertainment for the rapidly growing numbers of men being employed.

In these initial stages, men were housed in large camps, originally in tents, but soon in wooden sleeping quarters and mess rooms.

Reading rooms and a fully equipped billiard room were provided for their recreation, with canteens in the actual construction camps.



THE YALLOURN STORY

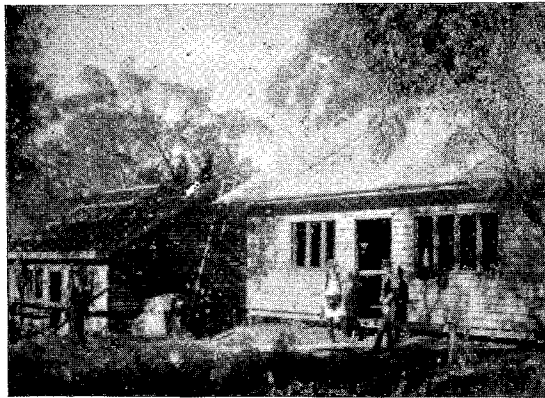


THIS PAGE SPONSORED BY:

AUSTRALIA AND NEW ZEALAND BANK LIMITED

In 1920 a comprehensive report on the building of a township, based on plans prepared by the Commission's architect, Mr. A. R. LaGerche, was submitted to the Victorian Government.

The proposals were adopted and authority given to proceed with the first section of the work, comprising 200 houses and associated buildings, sufficient for a population of 100. The cost was estimated at £224,360.



THE FIRST HOUSES

During this vital but complex period of organisation, Sir John Monash was Commission chairman. As soldier, engineer and scholar, he applied his great administrative and organising ability to the development of electric power resources in Victoria.

Through his influence, the first house was erected in 1921 in Maiden Street, and

by June 30, 1922, 30 houses had been completed. Sixty more were occupied by staff during the next year.

By June 30, 1923, the population numbered 250 in the township and 1,200 in the camps, and in the following year, during which the Yallourn Power Station came into operation, the total number of Yallourn town houses was 124.

THIS PAGE SPONSORED BY:

A. OLIVER, Yallourn

Yallourn Town Advisory Council

Although control of Yallourn is vested in the State through the State Electricity Commission, a voice in its organisation is heard from town residents through their three elected representatives, Cr. F. Harries, Cr. B. Milne and Cr. W. T. Wallace, on the Yallourn Town Advisory Council.

Commission representatives, of whom there are also three, are: T. B. Jensen (A.G.S.), A. Lynch, and J. P. Ashmead. Cr. T. Forristal has continued as chairman since the establishment of the Council. Mr. A. J. F. Heskey is secretary.

The original councillors met inaugurally at the Yallourn Fire Brigade Hall on January 7, 1948, following an election on December 13, 1947.

This was the result of provisions contained in the State Electricity Commission (Yallourn

area) Act 1947, which allowed the excision of Yallourn territory from the adjoining Shires of Narracan and Morwell, and gave the Commission the authority and power of a municipality.

The executive authority, to whom the council submits suggestions and recommendations within its charter, is the Commission, which advises the Council of the finance available each year, and indicates how the money will be spent.

As residents are not called upon to pay rates, no revenue is available other than that made available by the Commission.

The organisation of this unusual Council originally followed agitation for self-government by the section of the Yallourn community known as the Yallourn Self-Government Delegates' Committee.



The first Yallourn Town Advisory Council meeting: Standing are — D. S. Langhorne, J. Collins, R. Hamilton. Seated: E. G. Chisholm, Brigadier J. Field, T. Forristal, R. Edmondson, A. Fewster.

THIS PAGE SPONSORED BY:

J. JARDINE'S CAFE, Yallourn

The earlier **CIVIC ASSOCIATION**

A fore-runner to the Yallourn Town Advisory Council was the Yallourn Civic Association, set up for the advancement of social, cultural and sporting activities of the citizens, and the improvement of civic facilities.

Association membership was open to all residents of the area controlled by the S.E.C. at Yallourn, on payment of one shilling per annum.

Searching, restless, progressive, the Yallourn Civic Association was destined to last until it had made its twelfth annual report.

Its importance was observed on January 21, 1936, by the Yallourn General Superintendent of the day, Mr. R. D. Dixon, when he wrote that the S.E.C. would officially recognise the Association as the mouthpiece of the residents of Yallourn on all civic affairs.

The twelve members of the Council were elected by poll, and their first meeting was held on December 2, 1935; under the secretaryship of Mr. W. K. L. Murray.

The first president was Mr. C. H. Bealand, (1935-42); later succeeded by Mr. H. C. Beulke, (42-43); then Dr. J. M. Andrew, who retained the office until the Association was disbanded upon the formation of the Yallourn Town Advisory Council.

From the first meeting, when the Association's interests covered a proposed rail deviation through Yallourn; the reduction of light and rent charges; the installation of sewerage disposal plant; the erection of a Town Hall; and better street lighting; most aspects of the town's life were touched upon.

A cultural and entertainment centre was believed necessary in 1937, and it was decided to press for the erection of a picture theatre which would also be available for concerts,

dramatic productions and public gatherings. (The Yallourn Theatre was opened on May 9, 1939).

The first ideas for a public library and community centre, containing a small hall for meetings and space for societies' committee meetings, were also suggested in 1937.

A private press was advocated in 1936 for the printing of the Yallourn newspaper, "The Live Wire," then being published as a four page news sheet by the S.E.C.'s Yallourn General Store. (It was not until the Association ceased to function that this was achieved).

Although some of the youth of Yallourn had found recreation and interests through the girl guide and scouting movements since 1925, in 1938 the Yallourn Youth Club was formed, with encouragement from the Civic Association.

War-time interests included Air Raid Precaution training, the formation of a Yallourn branch of the Australian Defence League and aspects of trading.

Finally making way for the Yallourn Town Advisory Council, the S.E.C. expressed sincere appreciation of the Association's active part as played by members on behalf of Yallourn citizens.

This was conveyed by S.E.C. Secretary, Mr. W. J. Price, who said it was the earnest hope of the S.E.C. that those citizens who had displayed such a willing spirit of public service in the past would continue their interest in local welfare and other civic movements in the future.

THIS PAGE SPONSORED BY:

H. W. DEVINE & COMPANY, Yallourn

GROWTH OF THE COMMUNITY

Churches and schools, cultural and sporting activities developed, as the town of Yallourn was evolving, and by 1948 its population had grown to 4,200 with just over 1,000 homes and a number of public buildings.

In its design, advantage had been taken of natural surroundings : long straight roads for residential areas had been avoided, streets were lined with nature strips and shade trees, and wound picturesquely along the contours of the hills.

This pleasant town, lying on the slopes of the hills, gave easy access along radiating streets to the central town square of civic buildings and shops.

The origins of Yallourn's comprehensive amenities lie in this past and among the first which were evolved by the youthful community included the provision of church services, held at the beginning under difficult conditions, as early as the first months

THIS PAGE SPONSORED BY :

LATROBE MEAT SUPPLY, Yallourn



Laying the Foundation Stone for St. John's permanent building

EARLY CHURCHES

from

bag and bark

settlement . . .

The first Church of England services were held at a bag and bark settlement above the original open cut until December 31, 1921, when the Rev. Percival Heresby Dicker arrived on the field, commissioned by the Bishop of Gippsland "to do his best."

He was allocated No. 1 cubicle in the Western Camp and held his first Anglican service under the one pine tree near a temporary post office on January 8, 1922.

Services were then soon conducted in mess rooms at both Western and Eastern Camps, the old Brown Coal Mine, Morwell Bridge, the South Camp and then in the temporary school.

The difficulties of accommodation were eased following the designing of a spacious dual

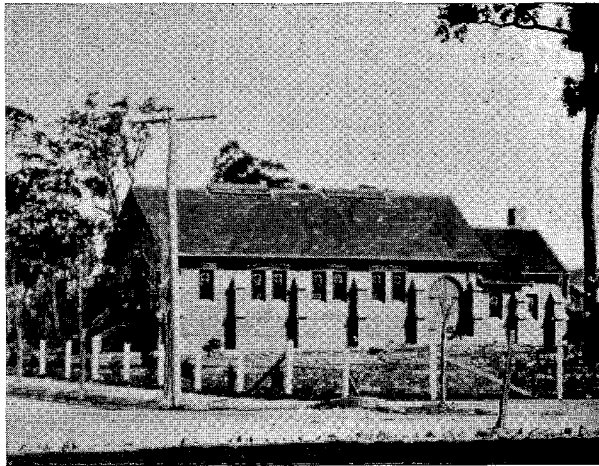
purpose hall by Mr. J. S. Gawler, and the foundation stone was laid on Saturday, February 2, 1923.

Among outstanding personalities of those early years, Sister Catherine stands out. She was brought to Yallourn at the end of 1923 by the Church of England to work among the sick and suffering, but following her marriage in 1925, Sister Beatrice took charge of this work until later beginning work with the Yallourn Hospital Scheme.

The St. John's Hall continued as a multi-purpose building until 1958, when the new Sunday School was dedicated by Bishop Donald Blackwood.

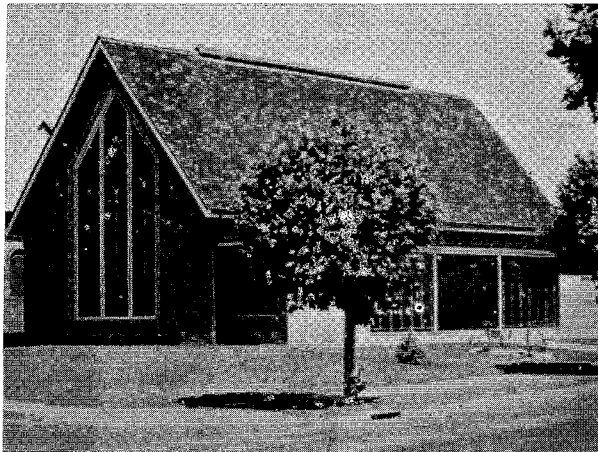
The first stage of the remodelling of St. John's was undertaken in 1957 with the dedication of the Martyr Chapel in 1957.

The first regular Presbyterian Church services emanated from a social evening held at the house of Mr. Tom Evans and his family, who occupied the only private dwelling at that time.



ST. ANDREW'S

*..... to solid
appointments*



YALLOURN METHODIST CHURCH

Amongst other Presbyterians working at the Yallourn project in 1920 were Messrs. Arnott, Beard, W. McKean and J. L. Young.

Sunday meetings continued at the Evans' house until June, 1922, when the Home Mission Committee sent the first missionary, Mr. G. G. Robertson. He conducted services in the township area, the West Camp and Brown Coal Mine at Yallourn North.

Mr. Morton Collins followed as missionary, and 1925 became one of the outstanding years of the church. Plans for a hall were adopted, largely through the work of Mr. C. E. Kernot (S.E.C. Chief Construction Engineer), who had plans and specifications completed free of all cost.

With much willing assistance, Mr. W. Kerr (foreman bricklayer) had foundations laid and the walls built to the damp course before the remainder of the building was let to a contractor.

The first minister, Rev. W. L. Simpson, was ordained and inducted on April 29, 1929 and the first Manse, situated at 9 Northway, was rented from the S.E.C., until a loan of £1500 was negotiated from the Assembly for the construction of the present building, erected with the great assistance of Mr. Kernot.

The Kirk Session was also created in 1929.

METHODIST

A small, temporary school building at 4 Hillside was the scene of the first Methodist service in Yallourn on May 31, 1923, when the new Morwell-Yallourn Circuit was established.

Earlier church officers at Yallourn were appointed on May 31, 1923. They were Messrs. T. Sinclair, W. Cook, C. Brinsmead, H. Meers and J. W. McMahon, who were deputed to act as Trustees. Six months later, those nominated and registered as Trustees were: Messrs. B. T. Drummond, J. G. Evans, F. Mounter, W. Langford, J. W. McMahon, P. Owen, with Mr. T. Sinclair as secretary.

On May 4, 1929, when the Yallourn Circuit was separated from Morwell-Yallourn, the first Resident Minister was Rev. H. L. Hawkins.

A house in East Cross was rented temporarily from the State Electricity Commission, when Rev. H. L. Hawkins was appointed to the new Yallourn Circuit in April, 1929, but next month a contract was signed for the erection of a Parsonage and the purchase of furnishings at a total cost of £1,925.

The modern church standing today was officially opened in 1958.



SALVATION ARMY

As with other denominations, Salvation Army work was carried on in the district long before the township was planned and built.

Although the area was originally worked from Warragul by visiting officers, Captain S. Chance came to live at the Brown Coal Mine site in 1920, and commenced regular meetings in January, 1921.

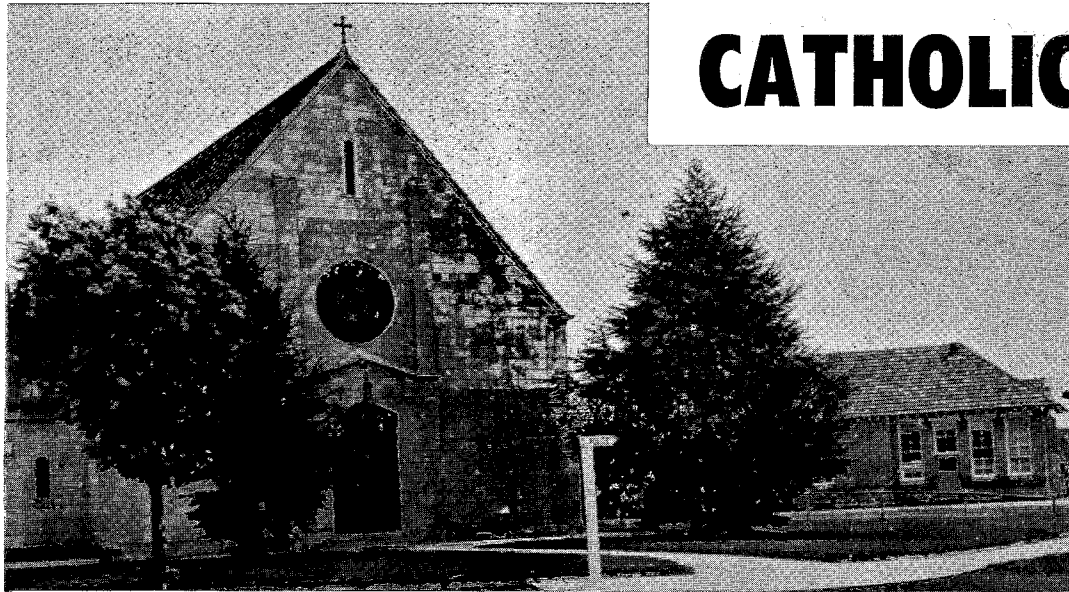
These were held in a big shed near where the brick kiln now stands, with open air meetings and Sunday Schools at other camps.

In 1937 a Hall was erected in Broadway West.

This was opened by the General Superintendent of the time, Mr. R. D. Dixon.

A small band was formed and its membership gradually increased. A songster Brigade was created, and a Junior Band and Young People's Singing Company.

Captain and Mrs. Duncanson are at present in charge of the work.



CATHOLIC

ST. THERESE'S CATHOLIC CHURCH AND SCHOOL

St. Therese's Catholic church was blessed and opened by His Lordship the late Bishop Ryan, CM. DD. Bishop of Sale, in 1938 and plans are now finalised for the completion of the church early in 1961. These extensions, which are estimated to cost in excess of £15,000, will feature a baptistry, choir gallery and bell tower.

In the early 1920s, Mass was celebrated at the Western Camp by a priest who travelled from Morwell each Sunday. In the middle 20's, the Old Fire Brigade Hall (now Centre Hall), was used for this purpose on Sundays until St. Therese's church - school was erected in 1928. This building was used as a church for Mass each Sunday and a parish hall for dances, pictures and socials until the school was opened in 1930.

Until 1937, Yallourn was attached to the Sacred Heart parish, Morwell, and one of the priests from Morwell travelled to Yallourn each Sunday to celebrate Mass, and on other occasions as required.

In 1937 Yallourn was made a separate parish and Rev. Fr. J. Walsh appointed as the first parish priest, the position he still occupies. Fr. Walsh lived at the Yallourn Guest House from 1937 until 1952 when the present modern presbytery was built on the old tennis court site near the church.

The first curate, Rev. Fr. N. Daly, was appointed to Yallourn in 1953 and was succeeded by Rev. Frs. J. O'Hagen, D. McCarten, D. Cagney and Wilson, the present curate.

Adjacent to the church, St. Therese's School was opened in 1930 and has since been extended twice to provide five classrooms, two of which can be easily converted into a small parish hall for social functions.

Present enrolment is about 200 but was much higher a few years ago, before a separate parish was established at Newborough and a new school opened there. Maximum enrolment was 430 at the time when Newborough was expanding and East Newborough was growing rapidly.

St. Therese's School caters for children to the 6th grade and is staffed by the Sisters of St. Joseph.

When the school was first opened, two nuns travelled from Morwell and back each day to teach in Yallourn until 1938 when a house next to the school in Ridgeway West was purchased from the State Electricity Commission and converted into a convent. Since then the Sisters of St. Joseph have been resident in Yallourn.

A SCHOOL SINCE 1922

The first school in the 12-house settlement of Yallourn in 1922 necessarily catered for the younger children, the ones of primary school age. Other pupils came from Western, Eastern and Southern Camps, Construction and Brick Kilns.



State School 4085, Yallourn, opened with 15 pupils on February 13 of that year in temporary premises, using a weatherboard cottage on the site now occupied by a children's playground in Hillside.

The area's rapidly growing population was reflected in the school attendance which grew to 77 at the end of 1922 and 139 at the end of 1923.

In 1925 the school was transferred to permanent premises in Outlook Road, now used exclusively by the Yallourn High. The Head Teacher at that time was Mr. W. Eddy.

Secondary classes were introduced in 1928 for the initial number of 61 students for Forms D, E and F, (the Head Teacher being Mr. H. J. Bull). The school was raised in status and became known as Yallourn Higher Elementary School.

These secondary classes were accommodated in two rooms of the Primary School, shortage of space being one of the chief problems.

Enrolments increased steadily each year. Intermediate Certificate studies were commenced in 1929.

In 1932 a separate building was opened in Fairfield Avenue for junior classes and the school occupied both sites as a composite primary-secondary unit until 1945, when the secondary section was proclaimed a High School.

Administration of the primary section of the school was transferred to the Fairfield Avenue building, but owing to shortage of accommodation, primary classes continued to use rooms at the High School. (Primary enrolments reached a peak of 730 in 1950).

These conditions continued until as recently as 1958, when the construction of additional classrooms enabled all primary classes to be accommodated on the one site.

Recent Head Teachers have been Mr. D. Lindsay (1939-1946); Mr. R. L. Walton (1947-1956); and Mr. F. D. Poynter, the present Head.

Younger children have had the benefit of the Yallourn Community Kindergarten since it was officially opened on July 3, 1948, four years after a first committee meeting was held to campaign for its establishment.

THIS PAGE SPONSORED BY:

W. A. PURVIS STORES LIMITED and
W. D. LACEY, Hairdresser, Centreway, Yallourn

A High School in 1945

Yallourn High School was established in 1945, when attendances had risen to over 300 pupils.

Enrolments had more than doubled during the first eight years (1945-52), reaching 677 in 1952.

Much of this increase was due to extended bus services catering for district pupils from Morwell, Moe and surrounding districts.

Although the total enrolment was affected by the opening of High Schools at Moe (1953), and Morwell (1956), attendance continued to increase at Yallourn and numbered 700 in 1960.

Various detached buildings which were added to the school include Army hutments, prefabricated classrooms and a new timber unit. A new wing for Art, Science and Cookery was opened in 1940.

The High School's steady development was under the leadership of: Mr. H. J. Bull (1928-30); Mr. J. Poletti (1931); Mr. W. M. Abrahams (1932-35); Mr. A. D. Hewitt (1936-38); Mr. D. Lindsay (1939-45); Mr. J. E. Menadue (1945-48); Mr. H. Champion (1949-52); and Mr. G. S. Ellis (1953-60).

Technical Training since 1928 . . .

Although beginning with several evening classes in a Preparatory Technical Course for 62 students at St. Andrew's Church building on May 29, 1928, the College today comprises 51 classrooms, laboratories or workshops with 36 ancillary offices and stores and a total enrolment of 1685 students.

On July 9, 1928, a cottage at 44 Narracan Avenue was occupied as the first school building and Mr. Lyons was the only full time member of the staff. Today the full time staff comprises 46 teachers, five clerical staff, one librarian, eight maintenance staff and 30 part time teachers.

During the foundation year, Mr. D. Lyons was appointed as principal and the inaugural meeting of the School Council was held on May 17, 1928.

By 1933, the school was housed in three cottages (Nos. 40, 42 and 44 Narracan Avenue) with two temporary workshops. Mr. C. H. Beanland had

With such a precedent set in Yallourn for large, highly technical undertakings, it was inevitable that the town's technical education should grow to the stature of that provided by the Yallourn Technical College, today.

replaced Mr. Lyons as Principal and other full time staff comprised three teachers and a lady clerical assistant.

Evening Commercial classes had commenced in 1928, but in addition there was a full day course for boys, part time trade courses for apprentices to the carpentry, electrical, boiler-making and turning and fitting trades, a variety of diploma subjects for part time students and evening classes in a number of special subjects.

Eight years after its establishment, the school occupied the first section of permanent buildings in Railway Avenue. Further additions to these buildings were to be occupied in 1943, 1948 and, when a new office and library block were completed, in 1952.

New buildings on the East Newborough site were occupied in 1957 by the junior section of the school.

Then in 1958, the status of the school was raised and its title changed to Yallourn Technical College.

THIS PAGE SPONSORED BY:

MEADOWS BAKERIES, Yallourn North, and
ROSSMORE HOTEL, Yallourn North

Although the first decade of Yallourn's life is called the pioneering era, full expression was given to the people's entertainment needs, from the first. These have developed and extended over the years.

ENTERTAINMENT

Culturally

Orchestral and choral music has been popular since the inauguration of the Yallourn Glee and Madrigal Society in 1925, and through the Yallourn Orchestral Society, formed six years later.

Over the years, the Yallourn Band has won a number of competitions, and has broadcast over the national radio network of the Australian Broadcasting Commission

Two Dramatic Societies, the Thespians and the Little Theatre, have regularly produced good quality performances over a number of years, and the Yallourn High School's annual Gilbert and Sullivan productions have earned considerable praise.

An art group and photographic society have provided interests for the artistic, with a Horticultural Society for the popular interest of gardening.

Women's groups and specialist organisations cater for individual interests and charities, and a notable development in recent years has been the spontaneous interest in the welfare for the elderly resulting in the establishment of 'Orana,' the elderly citizens' popular centre in Office Place.

Reading

An important amenity available to Yallourn residents is the efficient and comprehensive Public Library. Its phenomenal growth can be seen by comparing its original bookstock figures of 3,000 volumes and 900 borrowers, and those of today: a total of nearly 21,000 books and a membership of 3,800.

From being housed temporarily in the Yallourn Casualty Clearing Station building from October 14, 1946, the Yallourn Public Library graduated to its present modern premises, (on the opposite side of Monash Square), on November 16, 1956.

This building is more than double the size of the temporary quarters, with room for community activities, a spacious picture gallery, and both adult and junior libraries.

The initial bookstock was the result of a public appeal for books and money, a grant from the Commission and the incorporation of the R.D. Dixon Memorial collection.

In May 1951, it was the first regional library to operate in Victoria, as headquarters for the Mirboo, Morwell and Yallourn Regional Library Group.

The library became a centre for the distribution of documentary films within the Latrobe Valley in January, 1958, with films and projection equipment supplied by the State Film Centre.

THIS PAGE SPONSORED BY:

LEITHDALE DAIRY, Newborough, and
LATROBE DAIRY (J. S. Dwyer) of Moe

SPORTS

Through Yallourn's outstanding sporting facilities, every major sport has a strong following of active participants.

Football, cricket, golf, tennis, soccer, croquet, bowling, basketball, cycling and athletics all have provision made for them.

The facilities have developed talented sportsmen and women, who have proved capable of competing against Gippsland, and in many cases Victorian, organisations.

As in most areas, football is the major sport, with strong teams amongst seniors and juniors.

The Yallourn Football Club was founded in 1922 and three years later were premiers of Central Gippsland Football League, a distinction won on a number of other occasions.

At the end of the 1960 Latrobe Valley Football

League finals, Yallourn seniors were semi-finalists; the fourths were premiers; and the thirds made the final four.

Yallourn's newest "sport" is the boating commenced by Yallourn High School on the boating pool constructed in 1960.

This three acre lawn - surrounded pool is next-door to Yallourn's Olympic Pool, which was opened in 1959, providing competitive swimming facilities as well as safe play for young children and toddlers in two extra shallow pools.

HEALTH

A healthy growth has also been the benevolent Yallourn Medical and Hospital Societies and dispensaries.

Through small beginnings and the provision of medical benefits for Commission employees by co-operative means, has grown Yallourn's excellent medical and hospital amenities of today.

A Medical Fund Committee was formed by Commission employees in 1922 for medical benefits, and a Commission Medical Hospital Fund Committee was established in 1925.

Dr. J. M. Andrew was appointed Resident Medical Officer in the same year; and the Yallourn Hospital and Health Centre buildings were erected in 1928.

On June 28, 1929, the Medical Society was re-named the Yallourn Medical and Hospital Society through its registration under the Companies' Act. The Hospital and Charities Commission assumed control of Yallourn Hospital on November 1, 1951.

THIS PAGE SPONSORED BY:

MARYVALE TIMBER AND HARDWARE CO. PTY. LTD., Morwell

ACKNOWLEDGEMENTS

As in this book, the story of Yallourn's community life has been formed by local men and women, many of whom will return as Back-to-Yallourn visitors.

Present day residents, the old and the new, will welcome them, with pleasure in recalling their earlier associations and the historic industrial and civic developments they helped to assure.

Acknowledgement is made to the many Yallourn residents who helped compile this booklet for the Back-to-Yallourn committee and to the sponsors of its pages

Mr. C. V. Cook, Jeweller,
Centreway, Yallourn.

The Yallourn Delicatessen
(N. & G. Byrne), Broadway,
Yallourn.

Jannice Infant Salon (Mrs.
M. Larkins), Broadway,
Yallourn.

G. Dickson Brown & Co.,
Yallourn Hotel, Yallourn.

Yallourn Medical & Hospital
Society, Yallourn.

The National Bank of
Australasia Limited.

L. J. Premier, Chemist,
Centreway, Yallourn, and
Miss E. M. Rose, Chemist,
Centreway, Yallourn.

W. D. Lacey, Hairdresser,
Centreway, Yallourn.

Rockmans "Shopwell" Store.
H. W. Wilson Pty. Ltd.,
Yallourn.

K. B. Shine, Yallourn

R. Foster Yallourn Motors.
Australia and New Zealand
Bank Limited.

A. Oliver, Yallourn.

J. Jardine's Cafe, Yallourn.

H. W. Devine & Co., Yallourn.

Latrobe Meat Supply,
Yallourn.

W. A. Purvis Stores Limited.

Meadows Bakeries, Yallourn

North and Rossmore Hotel,

Leithdale Dairy, Newborough
and Latrobe Dairy (J. S.
Dwyer) of Moe.

Maryvale Timber and Hard-
ware Co. Pty. Ltd., Morwell.

This Souvenir Booklet was wholly set up
and produced locally by:
LATROBE VALLEY NEWSPAPERS PTY. LTD.
Printers and Publishers, 10 George St., Moe