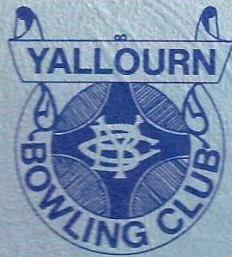


Color Photos by A.T. ADAMS
Printed by IMPRESSIONS, Colour Printers of Newborough

YALLOURN BOWLING CLUB



DIAMOND JUBILEE

1927 — 1987



Yallourn Bowling Club Parkway Yallourn.
Opened in 1949.



Yallourn Bowling Club New Building Parkway Yallourn.
Opened by Brigadier John Field G.S. Yallourn
15 October, 1966.



Yallourn Bowling Club Monash Road, Newborough.
Opened 2/9/78 by J.C. Trethowan, Chairman S.E.C.

CURRENT OFFICE BEARERS

Your Executive members for the
1987/1988 Season Are:

President	N.W. McAuliffe
Snr. Vice President	S. Findlay
Jnr. Vice President	J. Enguell
Past President	A.R. Whateley
Secretary	D.T. Casey
Treasurer	I.E. Burrows
Asst. Secretary	N. Harris

COMMITTEE:

N. Harris; G. Henderson, S. Holland, I. Houston; C.J. Luck;
D.K. McAlister; A. McIntyre; E. Mitchell; W.P. Phillips;
J. White

SUB COMMITTEE CHAIRMAN

Play & Handicap	J. Enguell; (P. Griffiths; I. Houston; S. Findlay; J. White)
Greens	D.K. McAlister
Social Bowls	A. McIntyre
Social Committee	S.P. Holland
Carpet Bowls	J. White
Billiards & Snooker	G. Henderson
House & Buildings	W. Phillips
Bingo	A.R. Whateley
Annual Tournament	S. Findlay. Assisted by the match & play (Corn)
M.G.B.A. Delegates	N.W. McAuliffe; C.J. Luck; S. Findlay (Proxy)
Bar & Finance Committee	N.W. McAuliffe; S. Findlay; J. Enguell; D.T. Casey; I.E. Burrows

Yallourn Bowling Club Lady Members Committee Season 1987/88

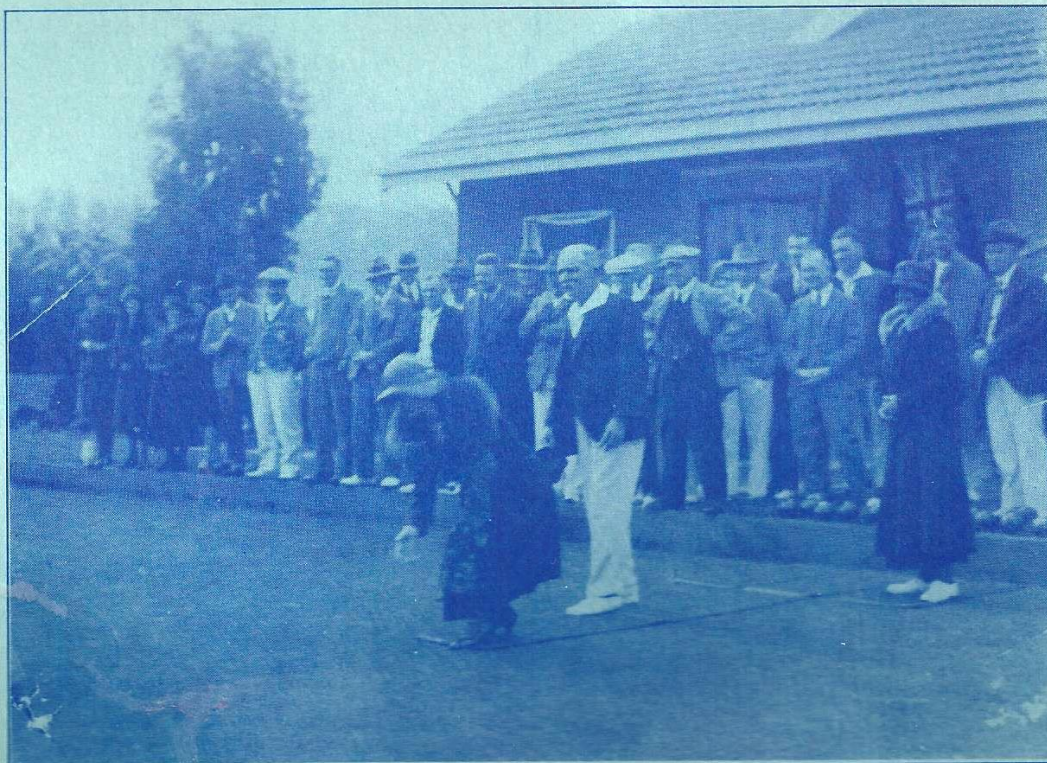
President	Barbara McIntyre
Vice President Senior	Molly Bowler
Vice President Junior	Doris Armstrong
Immediate Past President	Margo Holland
Secretary	Betty Kind
Treasurer	Mary Casey

COMMITTEE:

Verna Baber; Phyl Fitzgerald; Sybil Hanvy;
Yvonne Harvey; Lesley Loft;
Eileen Middlemiss; Gloria Nicholson;
Alice White; Barbara White;
Margaret Morris

MATCH & PLAY COMMITTEE

Chairlady	Barbara White
	Molly Bowler; Lorna Carlisle; Margot Holland; Margaret Morris; Yvonne Harvey (Proxy)



Opening of the Original Yallourn Bowling Club.
Green Street, Yallourn in 1929.

HISTORY

The inaugural meeting of the club was held in the Yallourn Fire-Brigade Hall on 19th September, 1927 at which it was agreed to form the Yallourn Bowling Club with a membership fee of £1-1-0.

The club house and 7 rink green were opened November 22nd, 1929 in Green Street, Yallourn.

To accommodate the growing membership a 21 rink green was built in Parkway Yallourn and the old club house was shifted to this site and the green opened in 1949.

To improve club house facilities the old building was removed and a new brick building was erected and opened by Brig. John Field General Sup. of the S.E.C. Yallourn on 15th October, 1966.

Due to open cut expansion the Yallourn Bowling Club had to be relocated.

In 1978 the Yallourn Bowling Club amalgamated with the Newborough Bowling Club in Monash Road where the Yallourn Bowling Club built 2 new greens and a new Club House.

This became the site for the new Yallourn Bowling Club and was officially opened by Mr. S.C. Trethowan, Chairman S.E.C. on 2/9/1978.